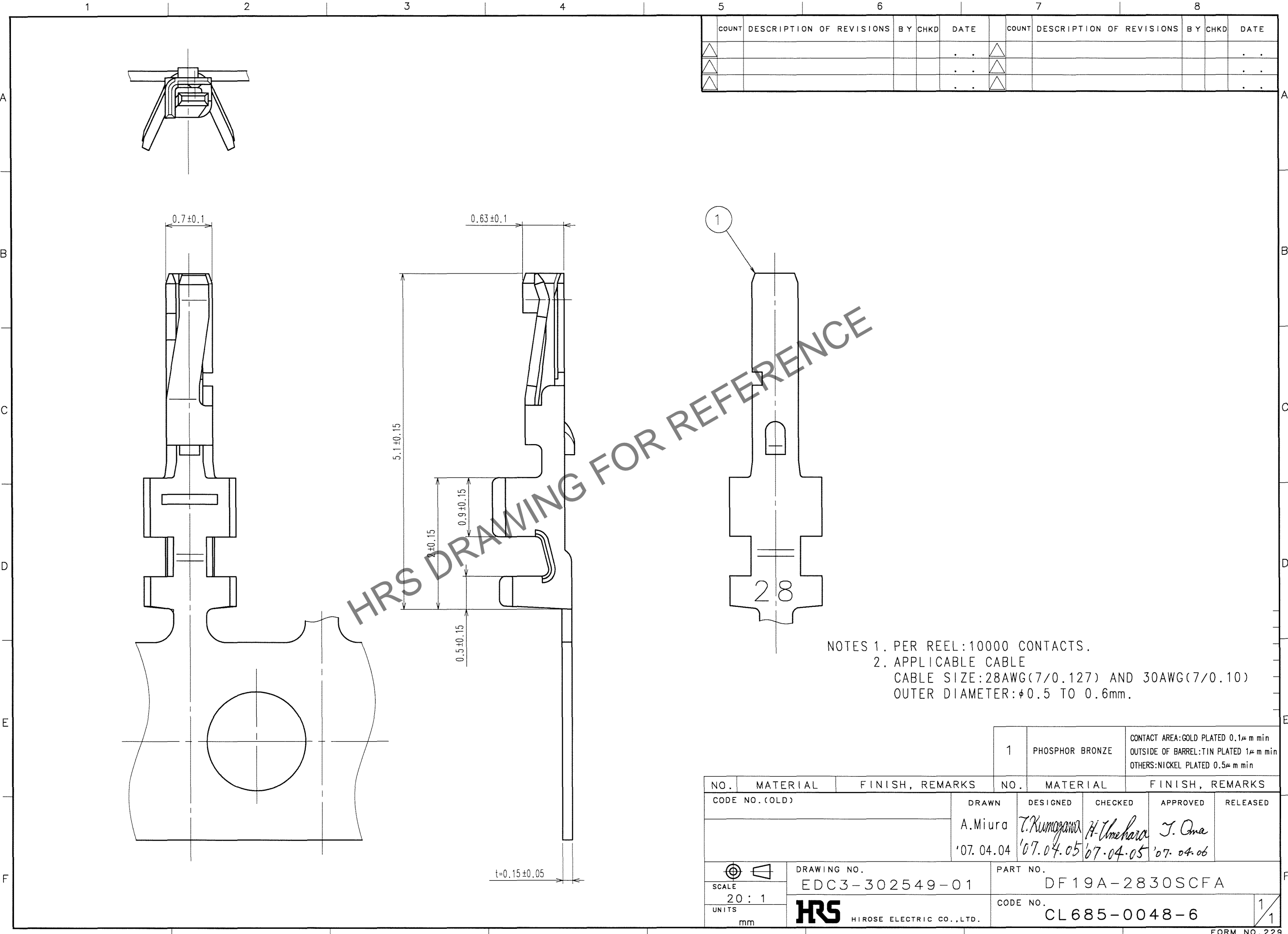


Apr.1.2024 Copyright 2024 HIROSE ELECTRIC CO., LTD. All Rights Reserved.
In case of consideration for using Automotive equipment / device which demand high reliability, kindly contact our sales window correspondents.



COUNT	DESCRIPTION OF REVISIONS	BY	CHKD	DATE	COUNT	DESCRIPTION OF REVISIONS	BY	CHKD	DATE
△				..	△				..
△				..	△				..
△				..	△				..

HRS DRAWING FOR REFERENCE

NOTES 1. PER REEL: 10000 CONTACTS.
2. APPLICABLE CABLE
CABLE SIZE: 28AWG(7/0.127) AND 30AWG(7/0.10)
OUTER DIAMETER: $\phi 0.5$ TO 0.6 mm.

TO

1		PHOSPHOR BRONZE	CONTACT AREA: GOLD PLATED $0.1 \mu\text{m}$ min OUTSIDE OF BARREL: TIN PLATED $1 \mu\text{m}$ min OTHERS: NICKEL PLATED $0.5 \mu\text{m}$ min		
NO.	MATERIAL	FINISH, REMARKS	NO.	MATERIAL	FINISH, REMARKS
CODE NO. (OLD)			DRAWN	DESIGNED	CHECKED
			A.Miura	T.Kumogawa	H.Umehara
			'07.04.04	'07.04.05	'07.04.05
			APPROVED	RELEASED	
			J.Oma		
			'07.04.06		
DRAWING NO.		PART NO.			
EDC3-302549-01		DF19A-2830SCFA			
UNITS		CODE NO.		1/1	
mm		CL685-0048-6			