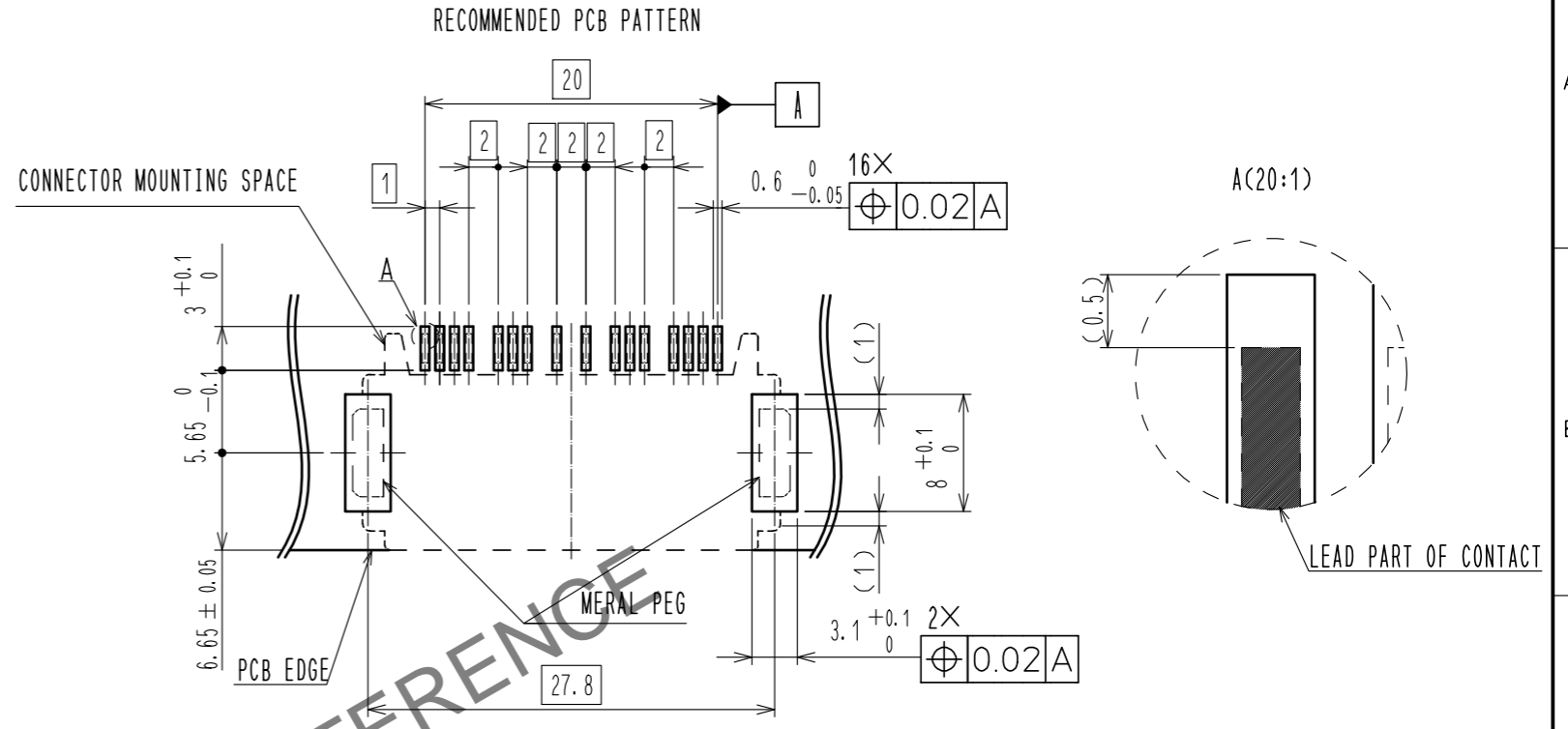
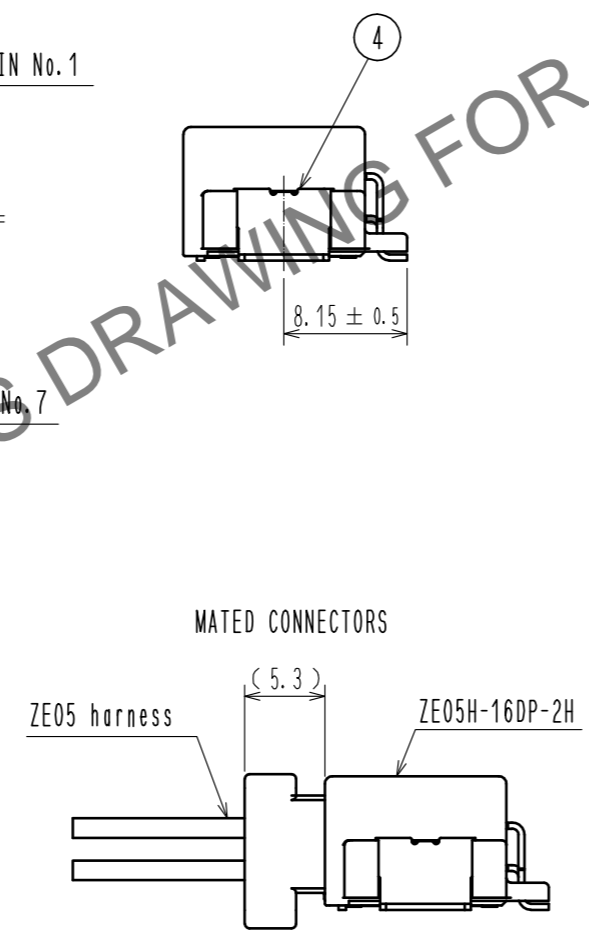
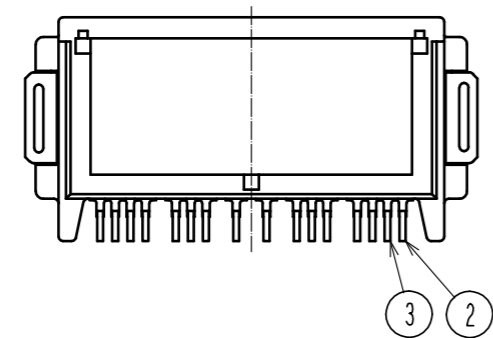
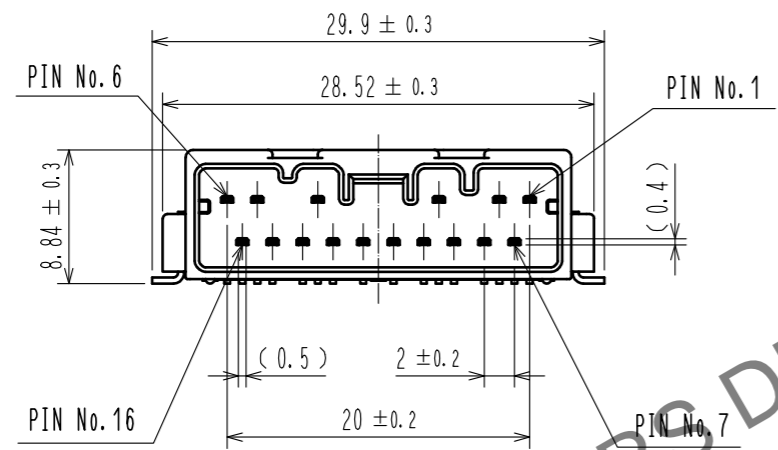
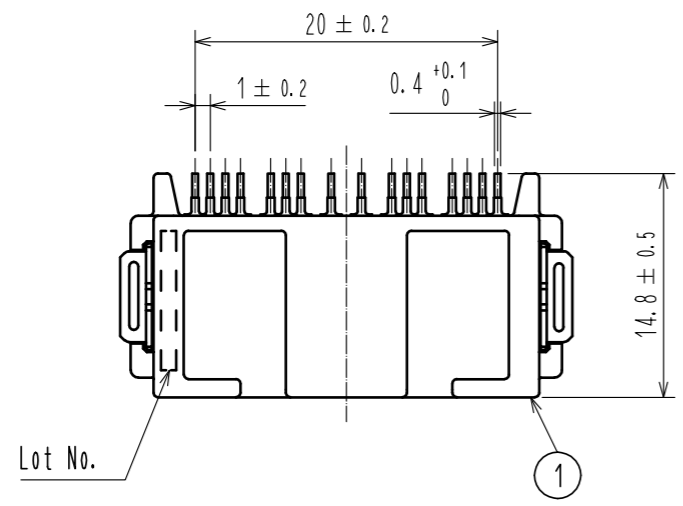
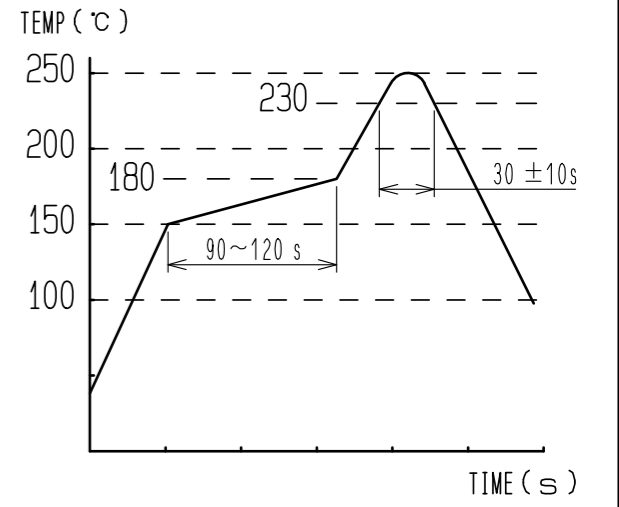


Nov.1.2024 Copyright 2024 HIROSE ELECTRIC CO., LTD. All Rights Reserved.
In case of consideration for using Automotive equipment / device which demand high reliability, kindly contact our sales window correspondents.

ELV, RoHS COMPLIANT



- NOTE 1. RECOMMENDED TEMPERATURE PROFILE FOR REFLOW (REFER TO RIGHT FIG.) USED REFLOW SYSTEM : IR IN THE AIR OR NITROGEN
 NO. OF CYCLES : 2 MAX
 PEAK : 250°C
 OVER 230°C : 20~40s
 PREHEAT : 150~180°C 90~120s
2. TEMPERATURE FOR SOLDERING IRON : 280~300°C WITHIN 2s
3. CO-PLANARITY SHALL BE 0.1mm MAX.
4. RECOMMENDED PCB THICKNESS IS 1.6mm.
5. RECOMMENDED SOLDER THICKNESS IS 0.15mm.



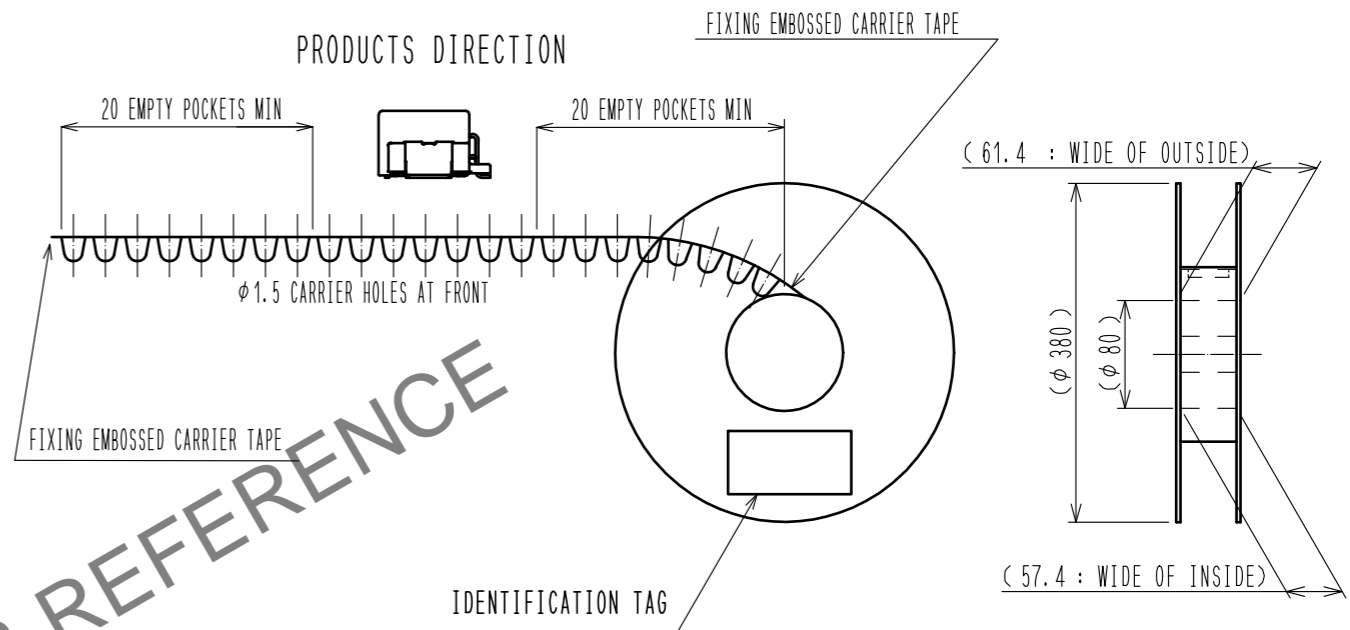
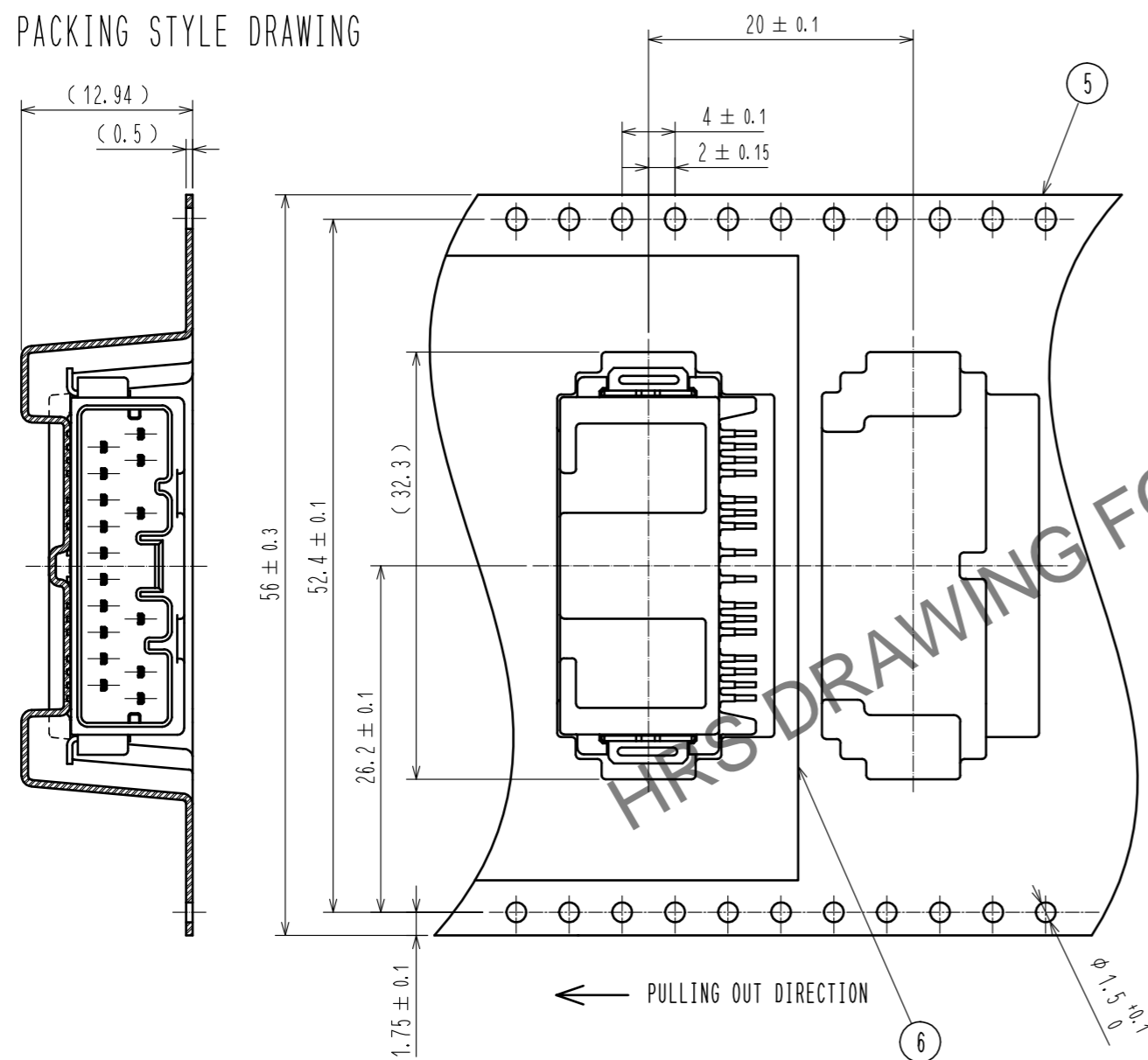
3	BRASS	SURFACE PLATING : TIN PLATING 1μm min						
		UNDER PLATING : NICKEL 1μm min	6	POLYESTER				
2	BRASS	SURFACE PLATING : TIN PLATING 1μm min	5	POLYSTYRENE				
		UNDER PLATING : NICKEL 1μm min						
1	PA	BLACK UL94V-0	4	BRASS	SURFACE PLATING : TIN PLATING 1μm min			
					UNDER PLATING : NICKEL 1μm min			
NO.	MATERIAL	FINISH . REMARKS	NO.	MATERIAL	FINISH . REMARKS			
UNITS	mm	SCALE	2 : 1	COUNT	DESCRIPTION OF REVISIONS	DESIGNED	CHECKED	DATE
HRS HIROSE ELECTRIC CO., LTD.		APPROVED : HK. UMEHARA	20190607	DRAWING NO.	EDC-373533-00-00			
		CHECKED : HK. UMEHARA	20190607	PART NO.	ZE05H-16DP-2H			
		DESIGNED : YH. MAMADA	20190607	CODE NO.	CL752-2114-0-00			
		DRAWN : MINTAE KANG	20190607					

Nov.1.2024 Copyright 2024 HIROSE ELECTRIC CO., LTD. All Rights Reserved.
In case of consideration for using Automotive equipment / device which demand high reliability, kindly contact our sales window correspondents.

PACKING STYLE

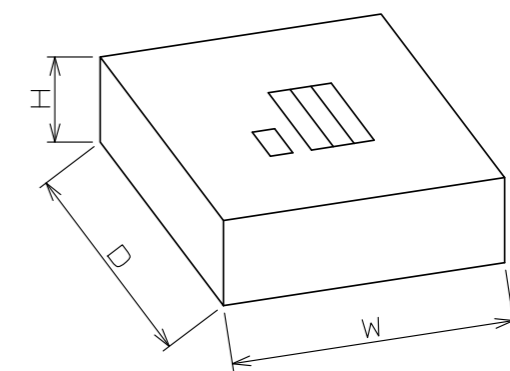
REEL DIMENSION (FREE)

PACKING STYLE DRAWING



CARDBOARD DIMENSION (FREE)

W=(405) (mm)
D=(405) (mm)
H=(63) (mm)



HRS DRAWING FOR REFERENCE

HRS	DRAWING NO.	EDC-373533-00-00
	PART NO.	ZE05H-16DP-2H
	CODE NO.	CL752-2114-0-00
		2/2