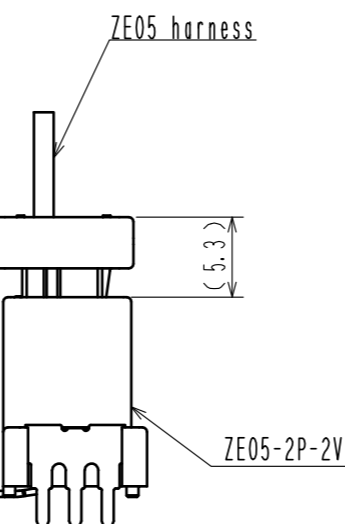
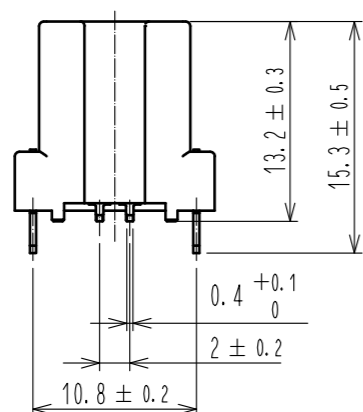
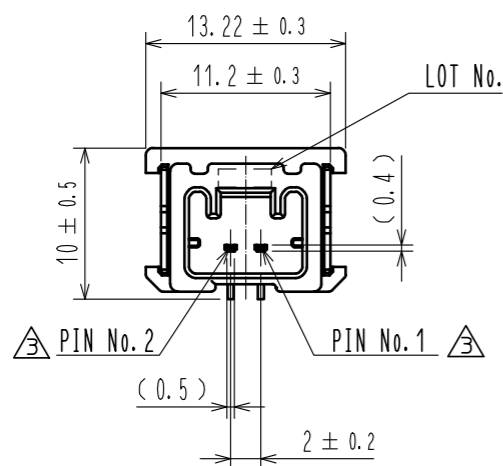
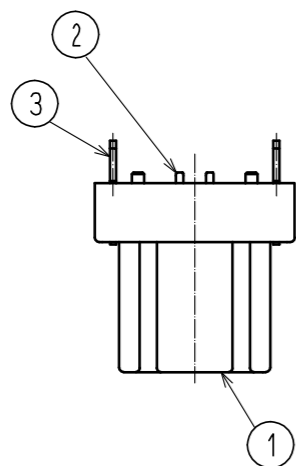
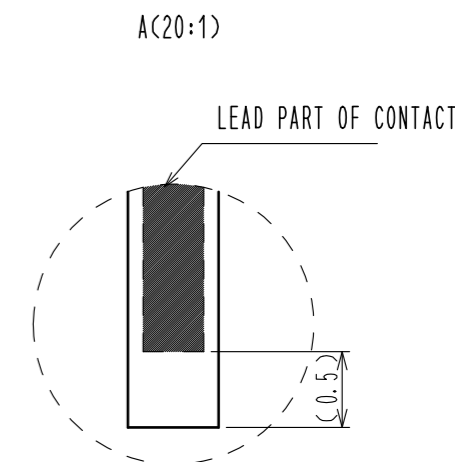
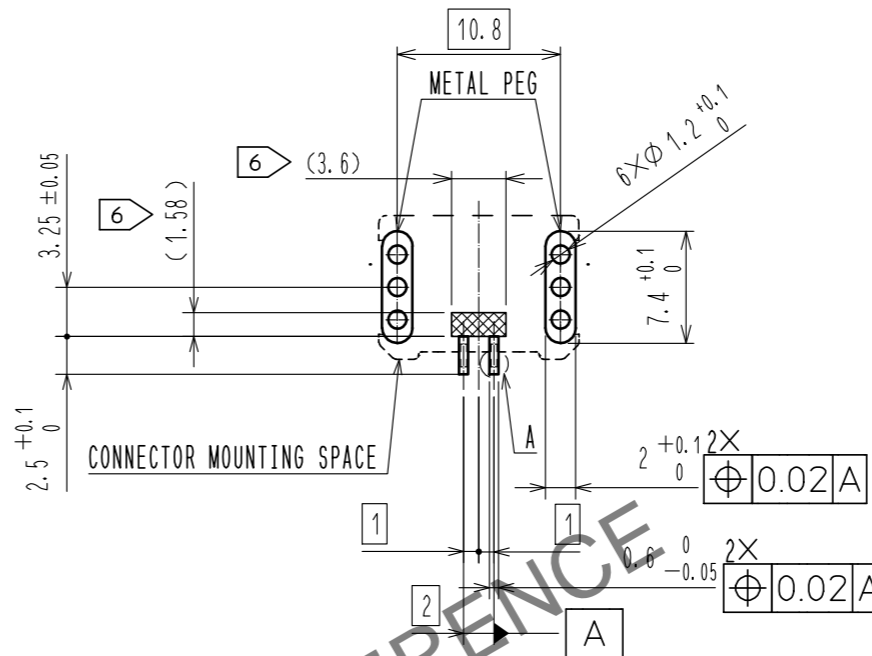


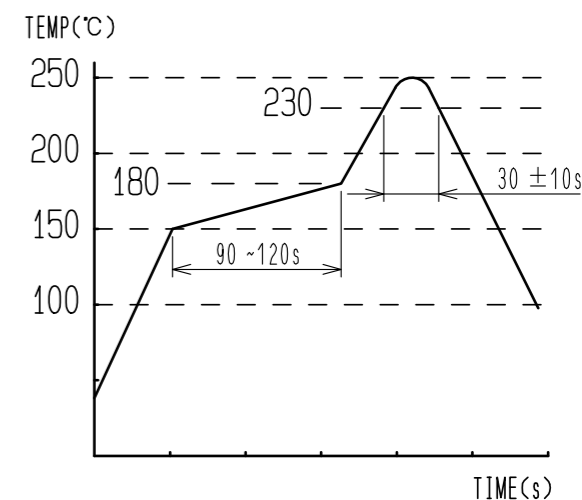
ELV. ROHS COMPLANT



RECOMMENDED PCB PATTERN



- NOTE 1. RECOMMENDED TEMPERATURE PROFILE FOR REFLOW (REFER TO RIGHT FIG.) USED REFLOW SYSTEM : IR IN THE AIR OR NITROGEN  
 NO. OF CYCLES : 2 MAX  
 PEAK : 250°C  
 OVER 230°C : 20~40s  
 PREHEAT : 150~180°C 90~120s
2. TEMPERATURE FOR SOLDERING IRON : 280~300°C WITHIN 2s
3. CO-PLANARITY SHALL BE 0.1mm MAX.
4. RECOMMENDED PCB THICKNESS IS 1.6mm.
5. RECOMMENDED SOLDER THICKNESS IS 0.15mm.
6. [Symbol] : PROHIBITED PATTERN AREA



2	BRASS	SURFACE PLATING : TIN PLATING 1μm min UNDER PLATING : NICKEL 1μm min	6	POLYIMIDE	PICK & PLACE TAPE		
1	PA	BLACK UL94V-0	5	POLYESTER			
			4	POLYSTYRENE			
			3	BRASS	SURFACE PLATING : TIN PLATING 1μm min UNDER PLATING : NICKEL 1μm min		
NO.	MATERIAL	FINISH . REMARKS	NO.	MATERIAL	FINISH . REMARKS		
UNITS mm	[Symbol]	SCALE 2 : 1	COUNT 2	DESCRIPTION OF REVISIONS DIS-T-00018184	DESIGNED TY. IKEDA	CHECKED TY. MOGI	DATE 20230529
APPROVED : HK. UMEHARA		20190607	DRAWING NO. EDC-368644-00-00				
CHECKED : HK. UMEHARA		20190607	PART NO. ZE05-2P-2V				
DESIGNED : YH. MAMADA		20190607	CODE NO. CL0752-2300-0-00				
DRAWN : MINTAE KANG		20190607	[Symbol] 1/2				

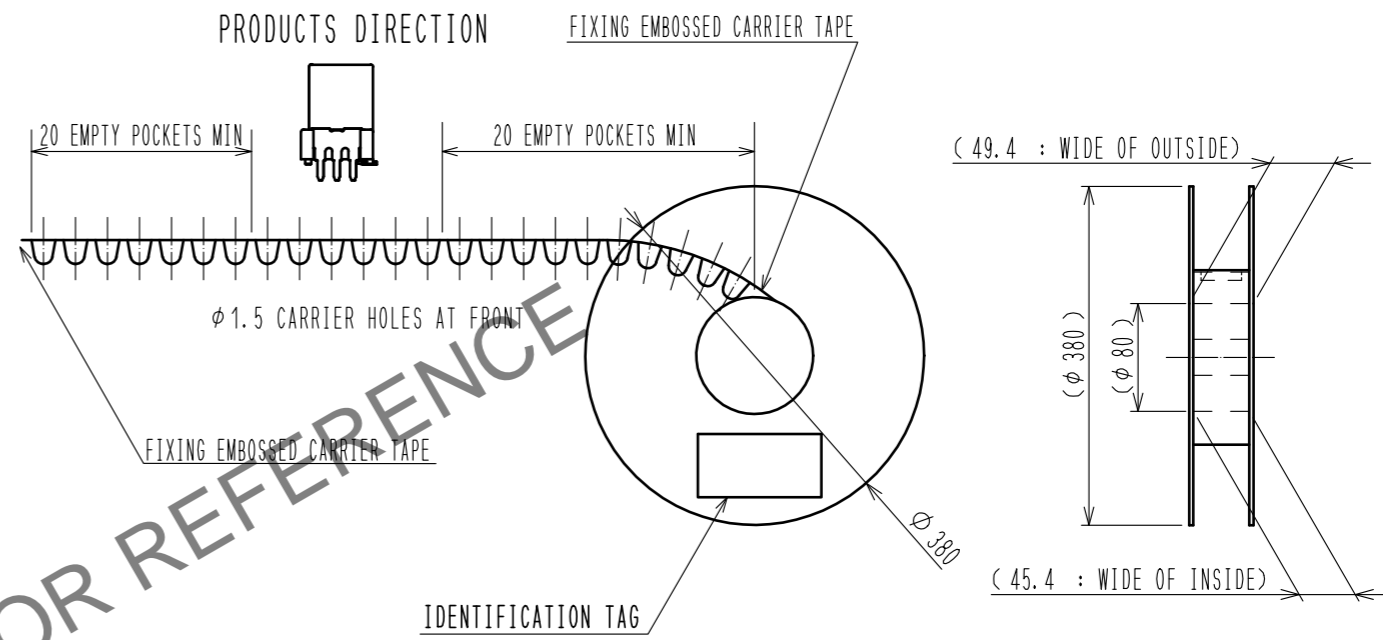
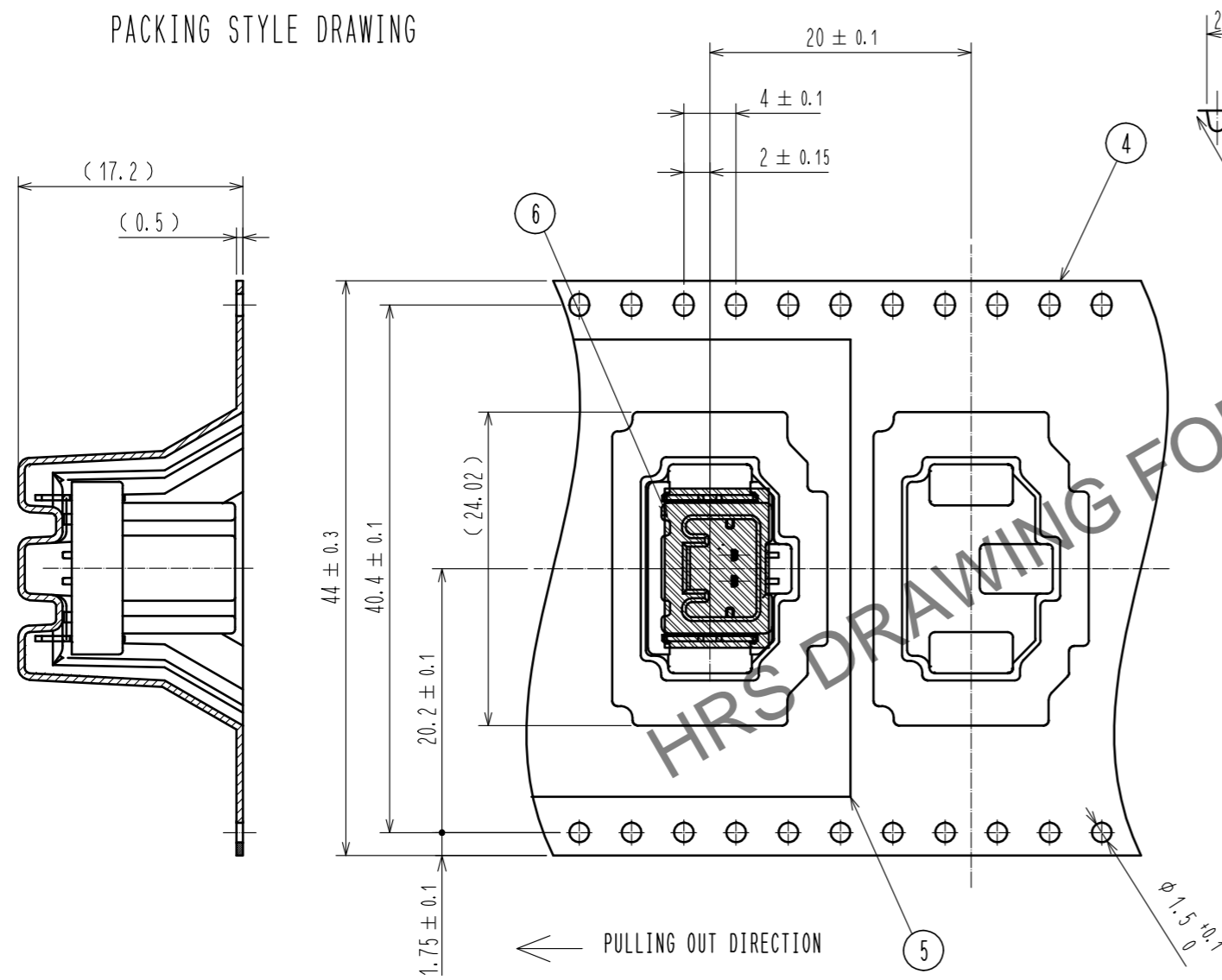
Nov.1.2024 Copyright 2024 HIROSE ELECTRIC CO., LTD. All Rights Reserved. In case of consideration for using Automotive equipment / device which demand high reliability, kindly contact our sales window correspondents.

Nov.1.2024 Copyright 2024 HIROSE ELECTRIC CO., LTD. All Rights Reserved.  
 In case of consideration for using Automotive equipment / device which demand high reliability, kindly contact our sales window correspondents.

# PACKING STYLE

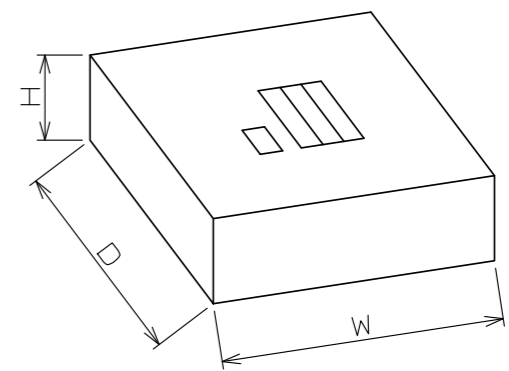
## REEL DIMENSION (FREE)

### PACKING STYLE DRAWING



## CARDBOARD DIMENSION (FREE)

W=(405) (mm)  
 D=(405) (mm)  
 H=(51) (mm)



<b>HRS</b>	DRAWING NO.	EDC-368644-00-00	
	PART NO.	ZE05-2P-2V	
	CODE NO.	CL0752-2300-0-00	