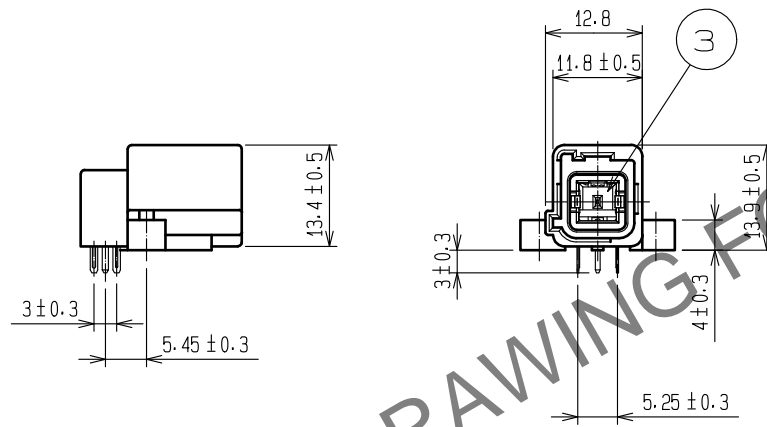
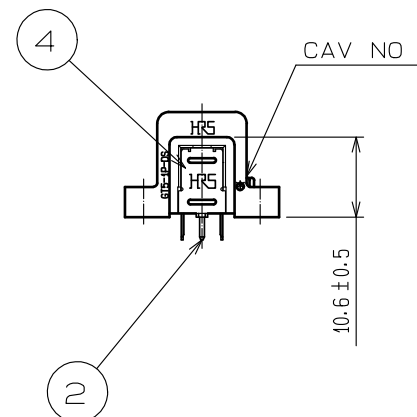
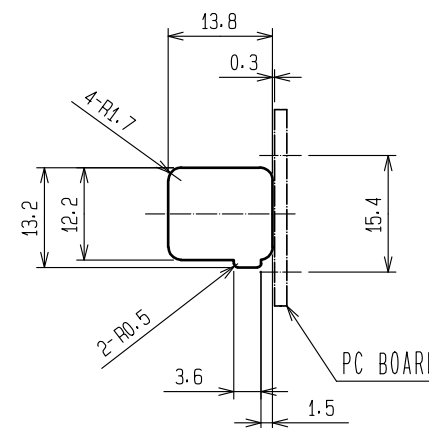
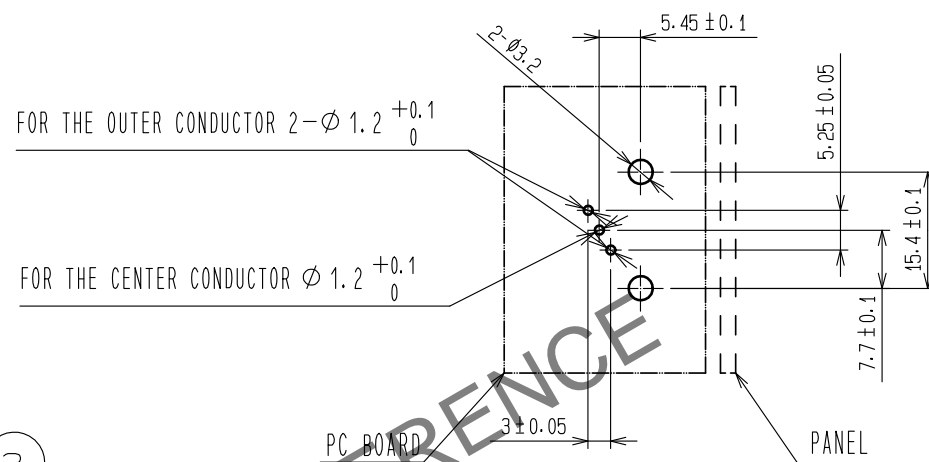
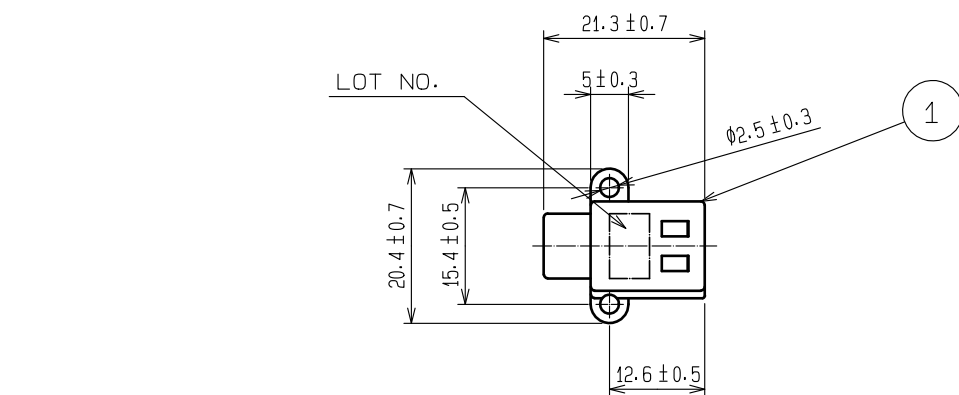


May.1.2024 Copyright 2024 HIROSE ELECTRIC CO., LTD. All Rights Reserved.  
In case of consideration for using Automotive equipment / device which demand high reliability, kindly contact our sales window correspondents.

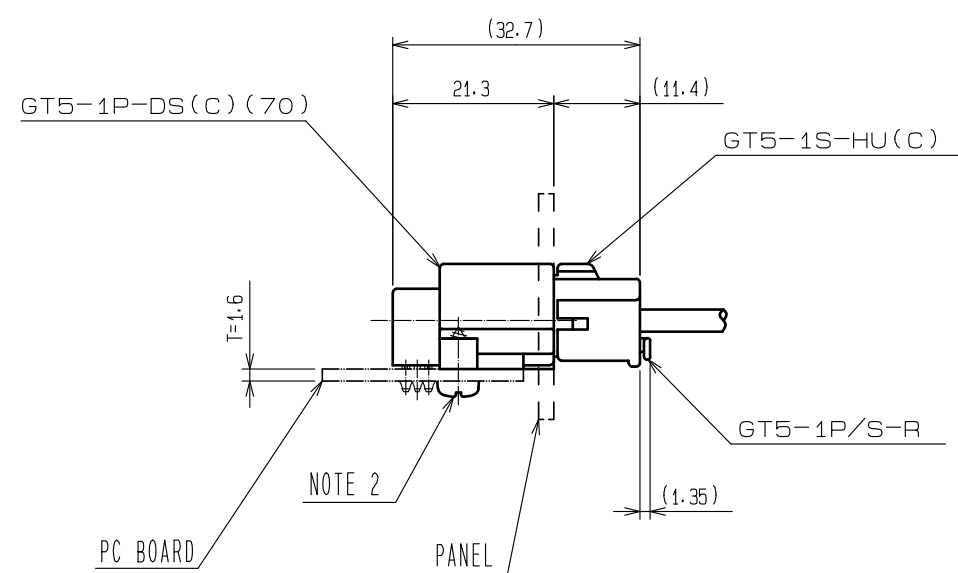
ELV. RoHS COMPLIANT

- NOTE 1. DEPENDING ON THE CIRCUMSTANCES, RECESS OF WELDING SHALL BE ADDED TO MOLD TO PREVENT SINKAGE.  
⚠ 2. FIXING SCREW SHALL BE NOMINAL DIAMETER 3mm, LENGTH 6mm IN ACCORDANCE WITH CLASS 1 OR 4 OF JIS B1115, 1112. DO NOT USE ANY SCREWS OTHER THAN THE RECOMMENDED ONES.  
⚠ 3. INSTALL THE SCREWS PERPENDICULARLY TO THE BOARD.



RECOMMENDED PC BOARD PATTERN

RECOMMENDED PANEL CUTOUT



MATED CONNECTORS

2	BRASS	TIN PLATING, T=0.64	4	PHOSPHOR BRONZE	TIN PLATING, T=0.25
1	PBT	SIGNAL BLUE	3	PBT	UL94V-0, DARK GRAY
NO.	MATERIAL	FINISH, REMARKS	NO.	MATERIAL	FINISH, REMARKS
UNITS mm		SCALE 1 : 1	COUNT 2	DESCRIPTION OF REVISIONS DIS-T-00008754	DESIGNED KN. MIKAMI
HIROSE ELECTRIC CO., LTD.		APPROVED : KI. HIROKAWA	20180517	DRAWING NO.	EDC-165589-70-00
		CHECKED : MO. OKADA	20180517	PART NO.	GT5-1P-DS(C)(70)
		DESIGNED : AM. YAMAUCHI	20180517	CODE NO.	CL0755-0083-3-70
		DRAWN : NF. IKEDA	20180507		
					DATE 20210326