

1. Applicable scope

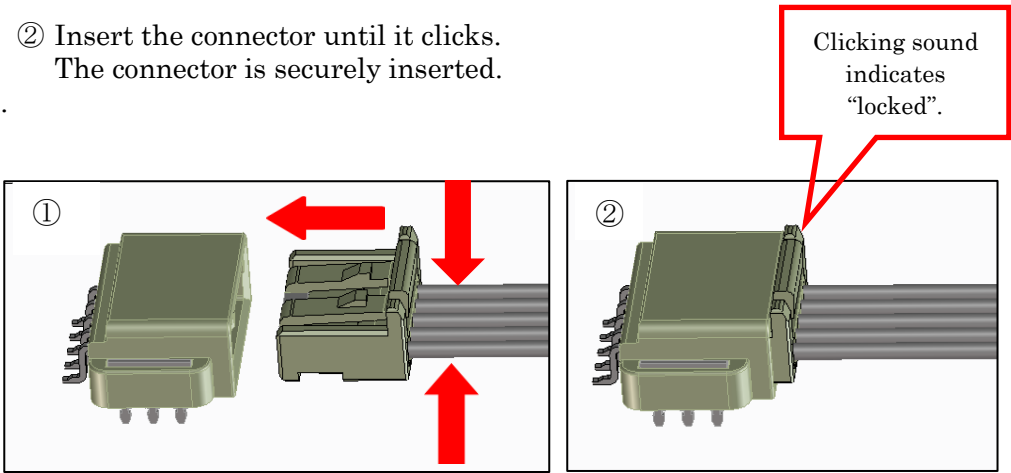
This document stipulates the procedure for insertion/removal of GT8E series.

2. Product name

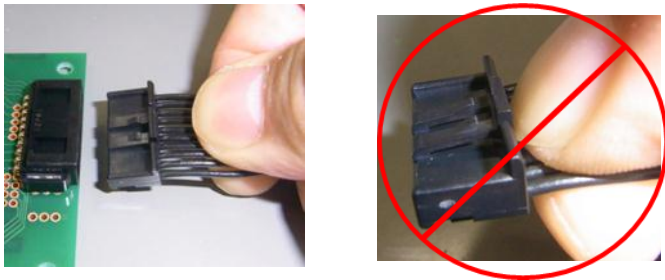
GT8E-2S-2C
GT8E-3S-HU
GT8E-4S-HU
GT8E-5S-HU
GT8E-6S-HU
GT8E-8S-HU
GT8E-10S-HU

3. Insertion procedure

- ① Hold the portion of the cable near the connector, and insert it straight into the housing part of the connector on PCB.
- ② Insert the connector until it clicks.
The connector is securely inserted.



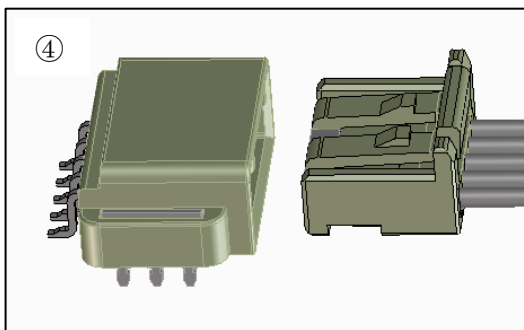
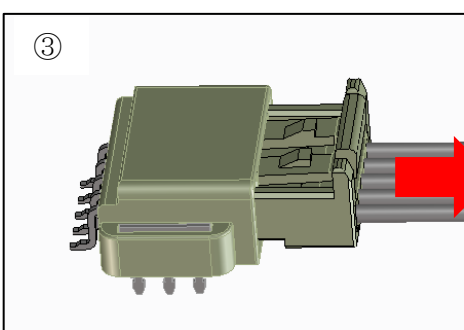
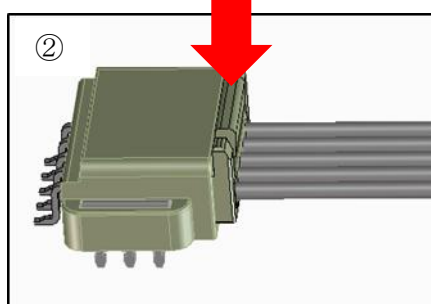
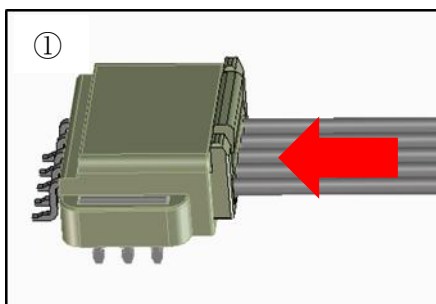
<Caution>
When inserting, be careful not to touch the lock lever.
This may hinder the movement of the lock lever and could lead to breakage.



	COUNT	DESCRIPTION OF REVISIONS	DESIGNED	CHECKED	DATE
△					
TITLE GT8E Series insertion/removal procedure				HRS HIROSE ELECTRIC CO., LTD.	
				APPROVED	AR. SHIRAI 17. 06. 29
				CHECKED	HS. OZAWA 17. 06. 28
				DESIGNED	NA. HARUBAYASHI 17. 06. 28
				WRITTEN	NA. HARUBAYASHI 17. 06. 28
TECHICAL SPECIFICATION				ETAD-T0572-00	△ 1 / 2

4. Removal procedure

- ① Hold the portion of the cable near the connector, and push it straight in mating direction.(*1)
- ② Lower the lock lever by pushing with a finger.
- ③ While holding the upper side and lower side of the lock lever with your fingers, pull out the connector slowly.
- ④ The connector unit with cable is removed.



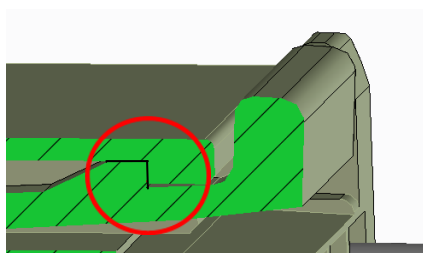
(*1)<Caution>

When mating, lock lever claws and the housing's locking parts may get engaged in a way that makes it hard to release the lock, as shown in the figure below. In this case, forcibly pushing down the lever may cause the lever to break. To avoid this, please push the connector in mating direction before releasing the lock.

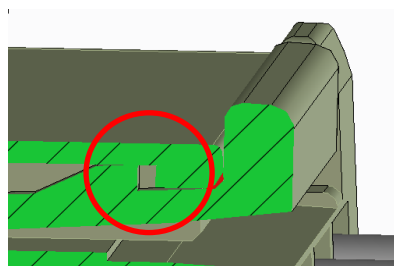


Do not pull the connector without releasing the lock.

Cross-sectional view of engaged section



The locking claw is interfering with the lock lever, making it difficult to lower the lever and pull out the connector.



Pushing the connector in the mating direction makes it easier to lower the lever.