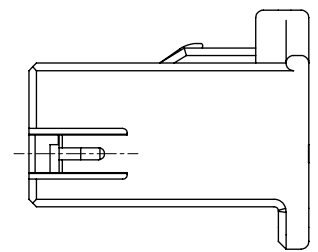
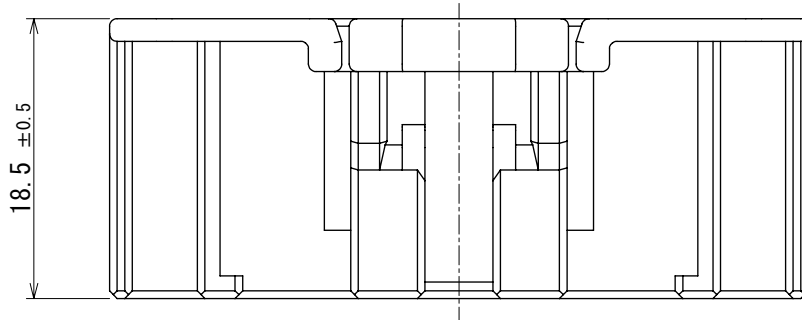
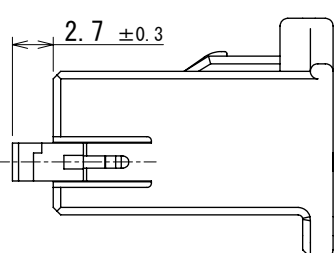
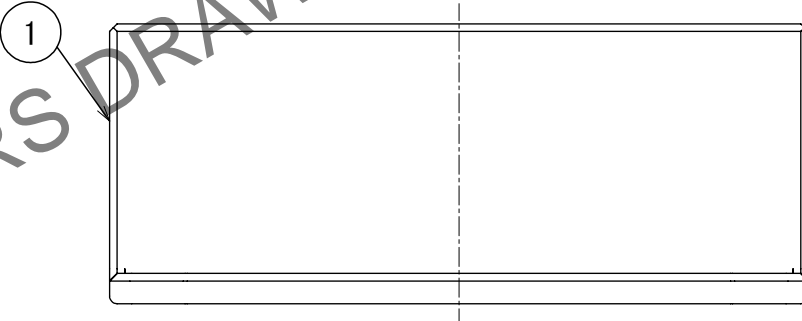
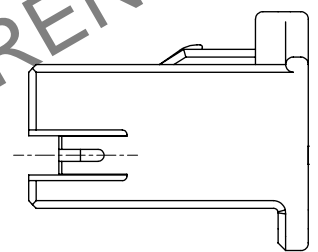
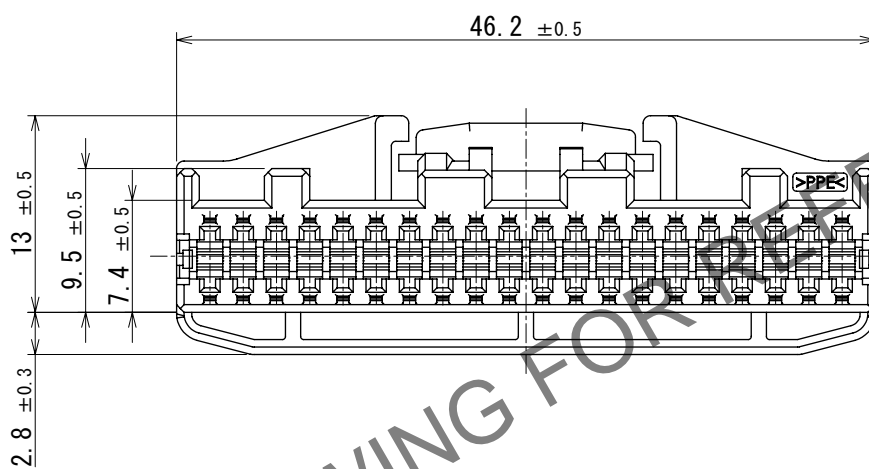


Mar.1.2024 Copyright 2024 HIROSE ELECTRIC CO., LTD. All Rights Reserved.
In case of consideration for using Automotive equipment / device which demand high reliability, kindly contact our sales window correspondents.

ELV, RoHS COMPLIANT



2 RETAINER COMPLETELY ASSEMBLED CONDITION



1 RETAINER TEMPORARILY ASSEMBLED CONDITION

NOTE. 1 Use this product with retainer GT25-40DS-R preset.

Retainer GT25-40DS-R product No. :CL775-0028-0

NOTE. 2 RETAINER TO BE COMPLETELY ASSEMBLED INTO POSITION AFTER CONTACT IS INSERTED.

NOTE. 3 PLEASE REFER TO INSTRUCTION SHEET ETAD-T0329-00 BEFORE USE.

1	PPE	BLACK						
NO.	MATERIAL	FINISH	REMARKS	NO.	MATERIAL	FINISH	REMARKS	
UNITS mm		SCALE 2:1	COUNT 1	DESCRIPTION OF REVISIONS DIS-T-00017882		DESIGNED AN. SAIKI	CHECKED TY. MOGI	DATE 2023. 06. 09
HIROSE ELECTRIC CO., LTD.		APPROVED : AR. SHIRAI	2015. 11. 04	DRAWING NO. EDC-362854-00-00				
		CHECKED : MO. OKADA	2015. 11. 04	PART NO. GT25-40DS-HU				
		DESIGNED : Li Gang	2015. 11. 04	CODE NO. CL0775-0023-0-00				
		DRAWN : Li Gang	2015. 11. 04					