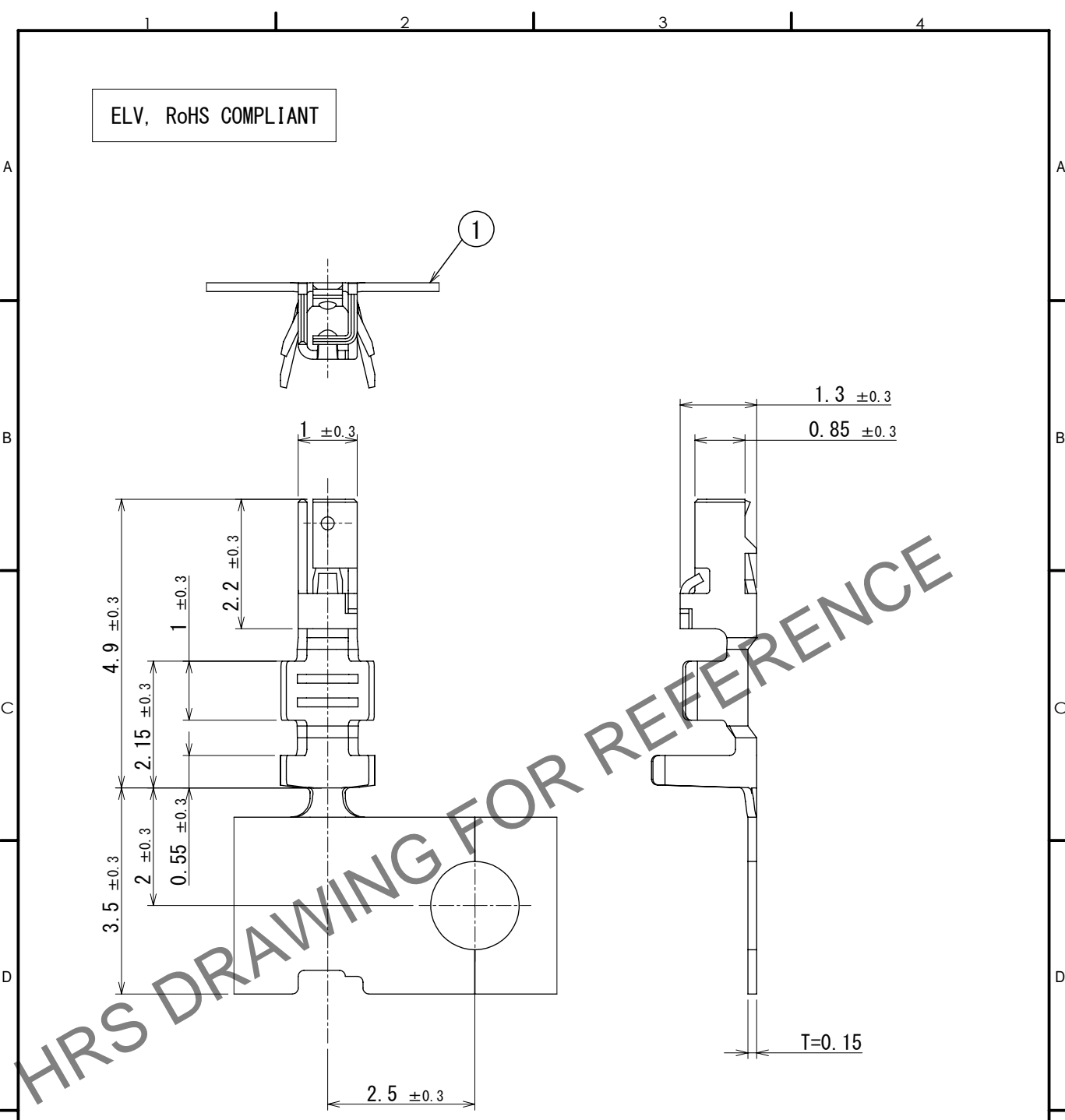


May.1.2024 Copyright 2024 HIROSE ELECTRIC CO., LTD. All Rights Reserved.  
In case of consideration for using Automotive equipment / device which demand high reliability, kindly contact our sales window correspondents.



- NOTE 1. PER REEL:10000 CONTACTS.  
2. REGARDING HOW TO HANDLE THE PACKAGED PRODUCTS, PLEASE REFER TO THE ATAD-T0946-00 「INSTRUCTION MANUAL FOR HANDLING OF REEL PACKAGING CONTAINING CRIMP TERMINALS」

1	COPPER ALLOY	TIN PLATED						
NO.	MATERIAL	FINISH	REMARKS	NO.	MATERIAL	FINISH	REMARKS	
UNITS mm		SCALE 10:1	COUNT 0	DESCRIPTION OF REVISIONS DIS-T-00018508		DESIGNED KN. YANAGIMOTO	CHECKED E.J. WAKATSUKI	DATE 2023. 08. 10
HIROSE ELECTRIC CO., LTD.		APPROVED : AR. SHIRAI	2012. 10. 09	DRAWING NO. EDC-168288-00-00				
		CHECKED : AR. SHIRAI	2012. 10. 09	PART NO. GT32-2428SCF				
		DESIGNED : TS. KUBOTA	2012. 10. 09	CODE NO. CL0782-0007-8-00				
		DRAWN : TS. KUBOTA	2012. 10. 09					