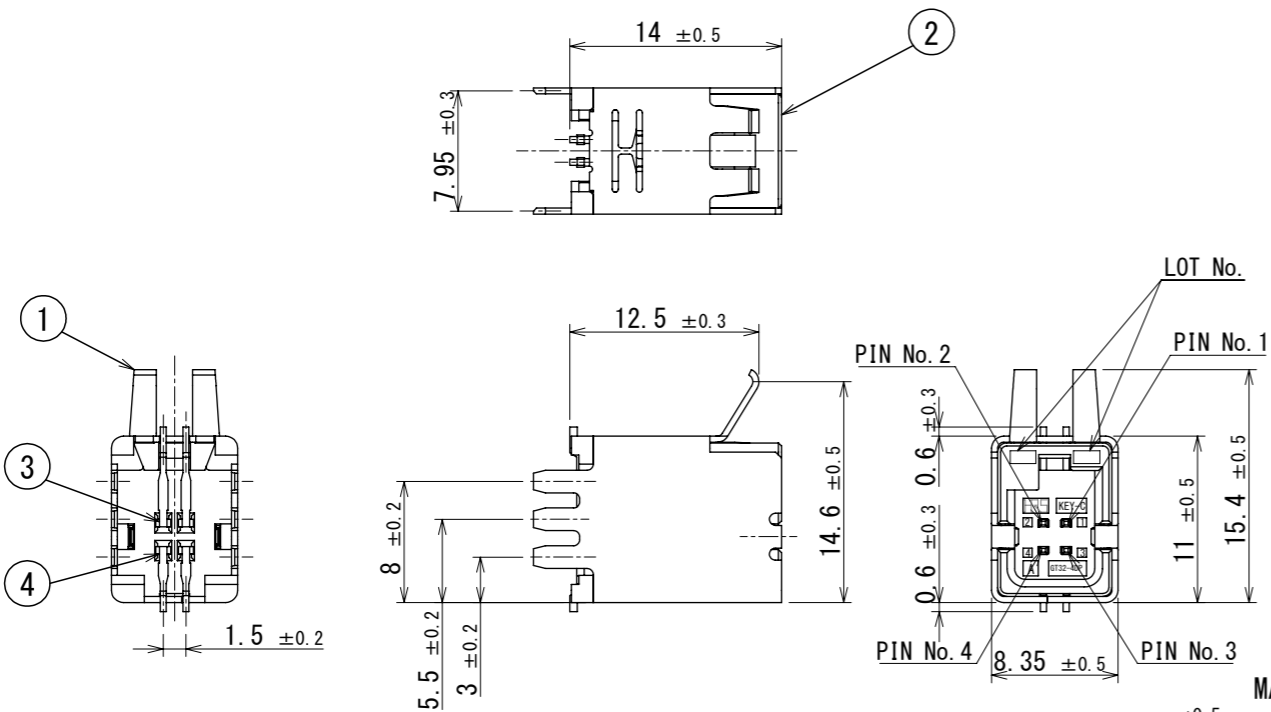
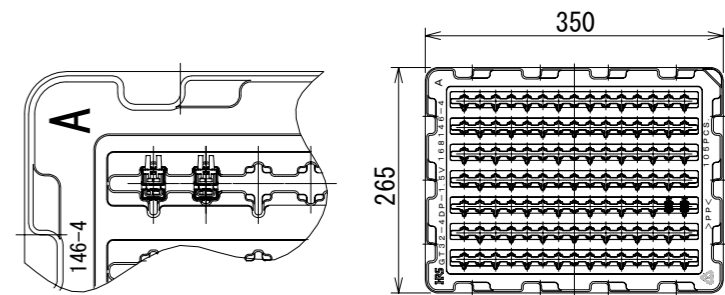
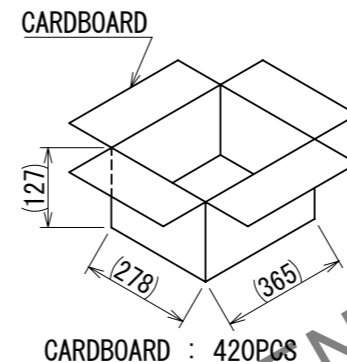
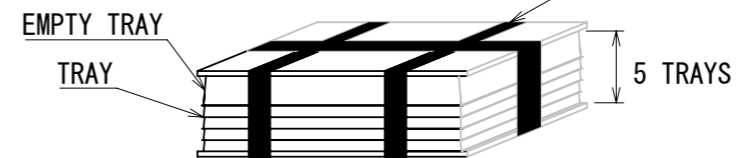


Jul.1.2024 Copyright 2024 HIROSE ELECTRIC CO., LTD. All Rights Reserved.
In case of consideration for using Automotive equipment / device which demand high reliability, kindly contact our sales window correspondents.

RoHS, ELV COMPLIANT

PACKING STYLE

5 TRAYS STACKING.
STACK TRAY A(168146-4) AND TRAY B(168176-0) STAGGERED.
TOP TRAY IS EMPTY.



MATED CONNECTORS

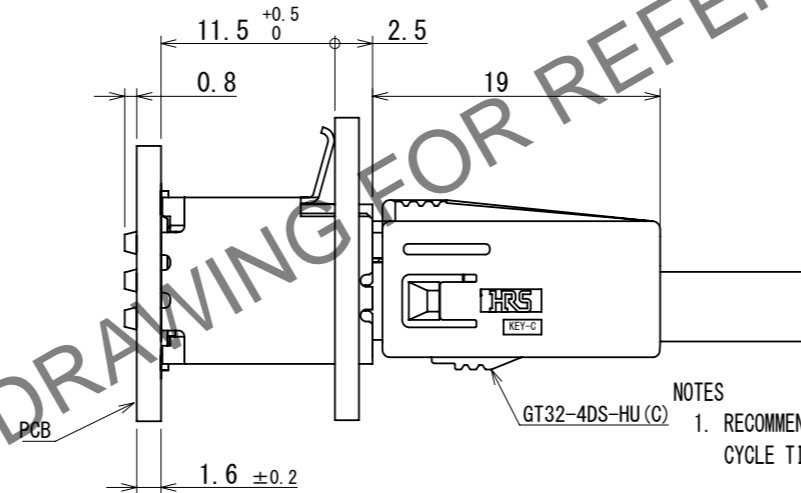
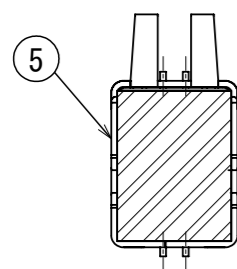
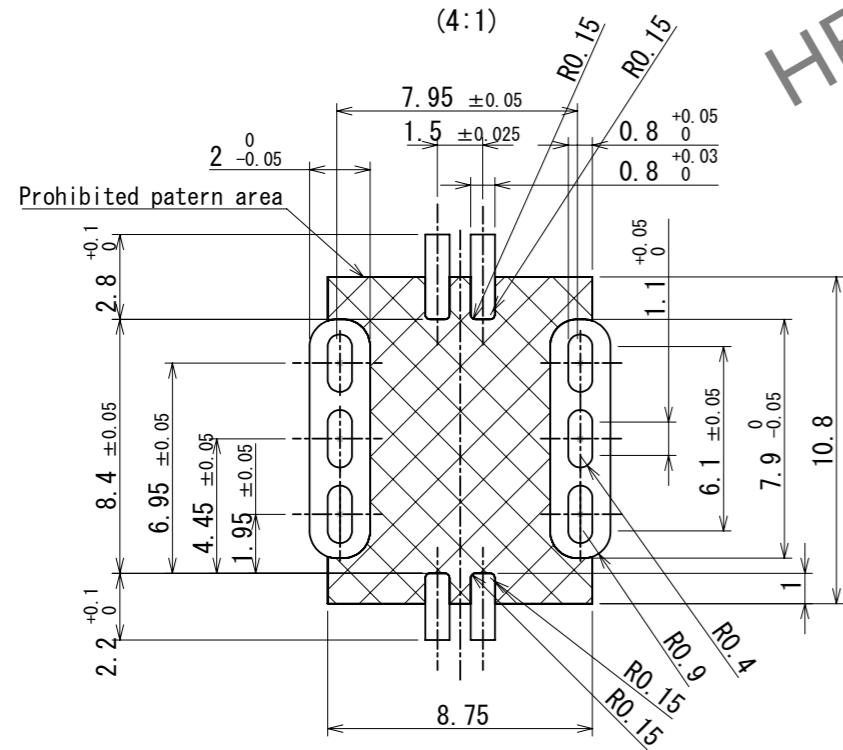


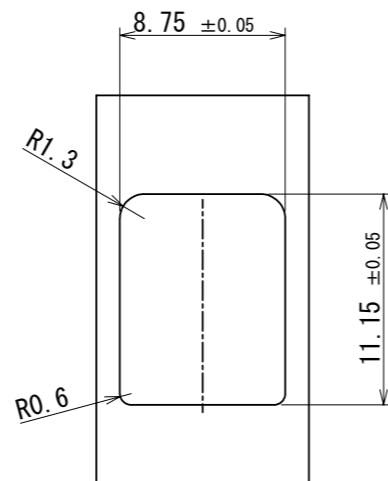
Fig. ADDED A PICK & PLACE TAPE



RECOMMENDED PCB LAYOUT (4:1)



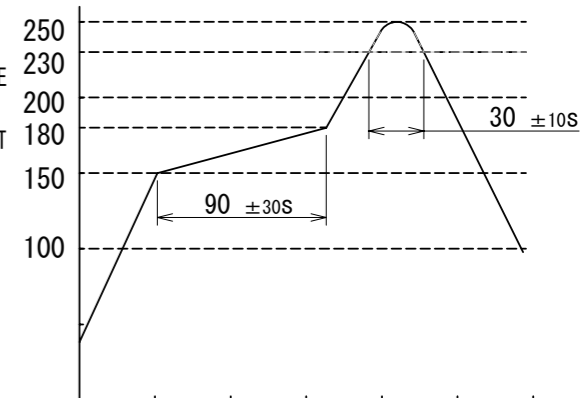
RECOMMENDED PANEL CUTOUT



NOTES

- RECOMMENDED REFLOW PROFILE (SEE RIGHT GRAPH)
CYCLE TIME: UP TO 2 CYCLES OF REFLOW SOLDERING ARE POSSIBLE UNDER THE CONDITIONS, PROVIDED THAT THERE IS A RETURN TO NORMAL TEMPERATURE BETWEEN THE FIRST AND SECOND CYCLE.
PEAK TEMPERATURE: 250°C
230°C MIN. FOR 20 TO 40 SECONDS.
PREHEATING AREA 150~180°C FOR 60 TO 120 SECONDS.
- HAND SOLDERING: 280~300°C, 2SECONDS MAX.
- CONTACT COPLANARITY: 0.1mm MAX.
- RECOMMENDED THICKNESS OF PCB: 1.6mm
- RECOMMENDED THICKNESS OF SOLDERING PASTE: 0.12mm

TEMP. (°C)



TIME (s)

3	BRASS	TIN PLATING							
2	PA	BLUE	5	POLYIMIDE	PICK & PLACE TAPE				
1	COPPER ALLOY	TIN PLATING	4	BRASS	TIN PLATING				
NO.	MATERIAL	FINISH	REMARKS	NO.	MATERIAL	FINISH	REMARKS		
UNITS	mm	SCALE	2:1	COUNT	0	DESCRIPTION OF REVISIONS	DESIGNED	CHECKED	DATE
HRS				HIROSE ELECTRIC CO., LTD.		APPROVED : AR. SHIRAI 2017. 07. 19		DRAWING NO. EDC-362125-00-00	
						CHECKED : TH. MIZUGUCHI 2017. 07. 19		PART NO. GT32-4DP-1. 5V (C)	
						DESIGNED : TS. KUBOTA 2017. 07. 19		CODE NO. CL0782-0067-0-00	
						DRAWN : TS. KUBOTA 2017. 07. 19		DATE 2023. 07. 03	