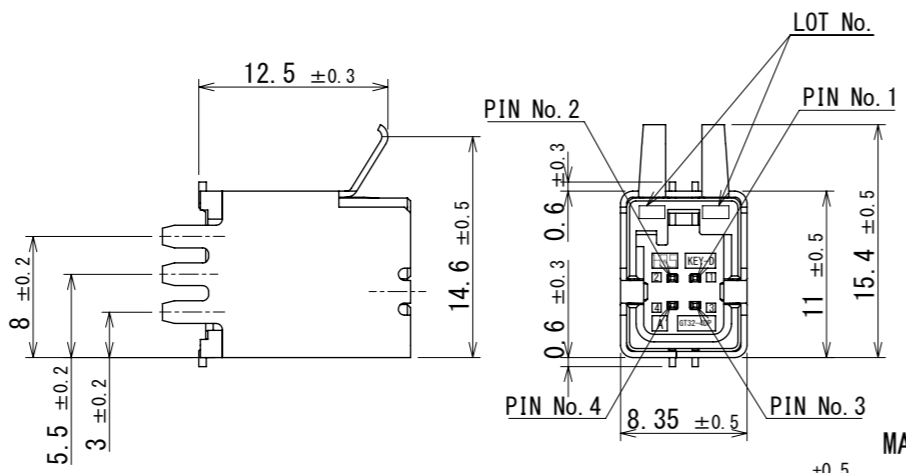
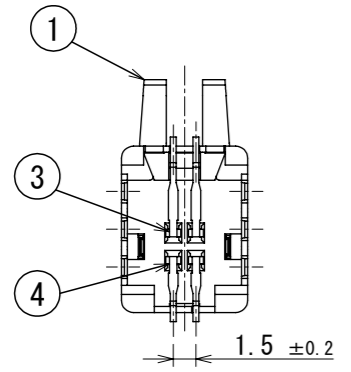
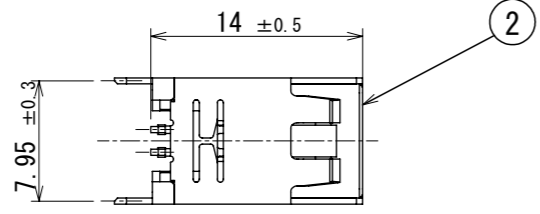


Aug.1.2024 Copyright 2024 HIROSE ELECTRIC CO., LTD. All Rights Reserved.
In case of consideration for using Automotive equipment / device which demand high reliability, kindly contact our sales window correspondents.

RoHS, ELV COMPLIANT



PACKING STYLE

5 TRAYS STACKING.
STACK TRAY A(168146-4) AND TRAY B(168176-0) STAGGERED.
TOP TRAY IS EMPTY.

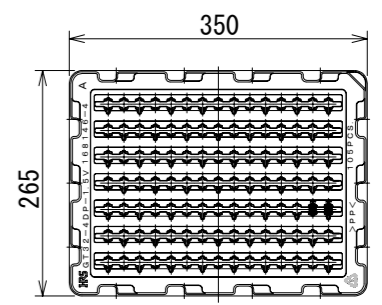
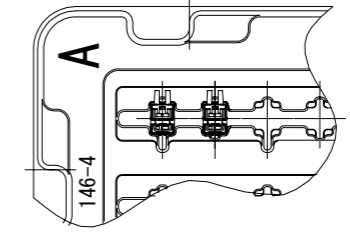
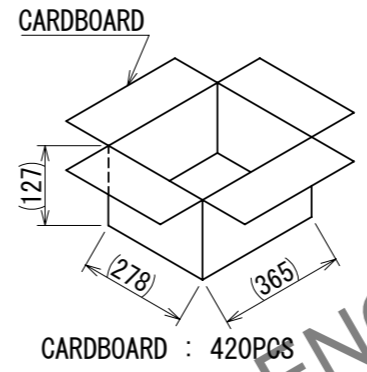
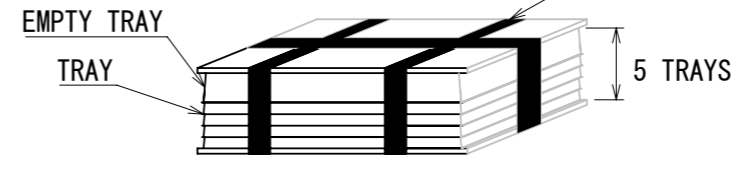
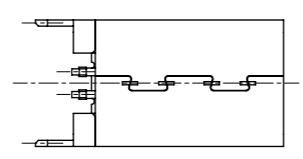
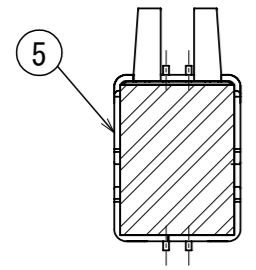
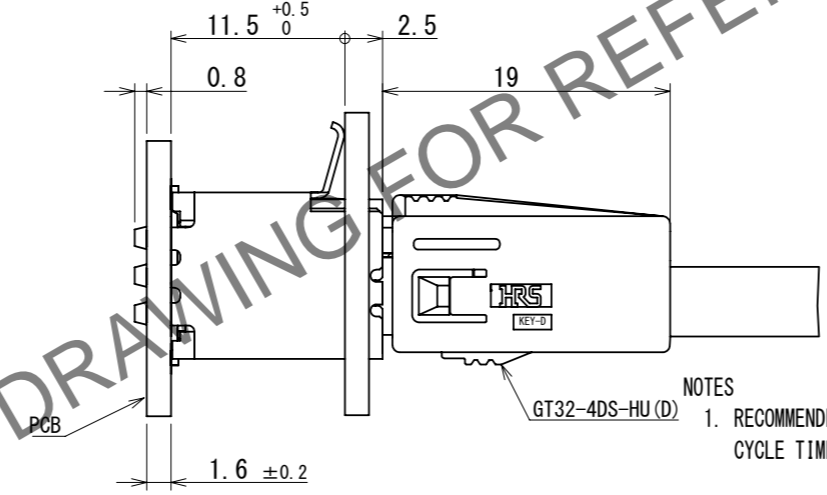


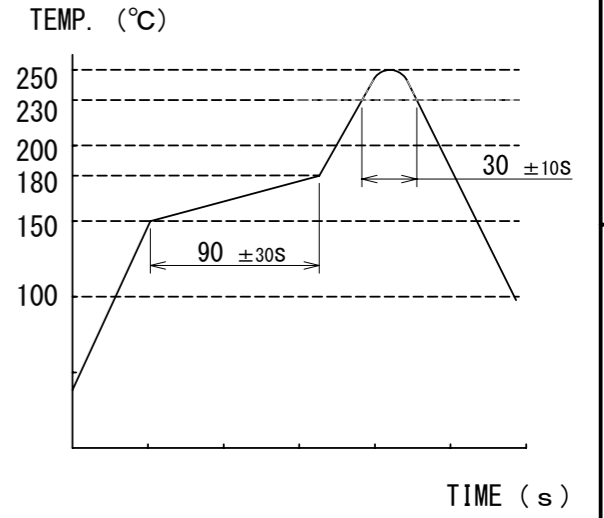
Fig. ADDED A PICK & PLACE TAPE



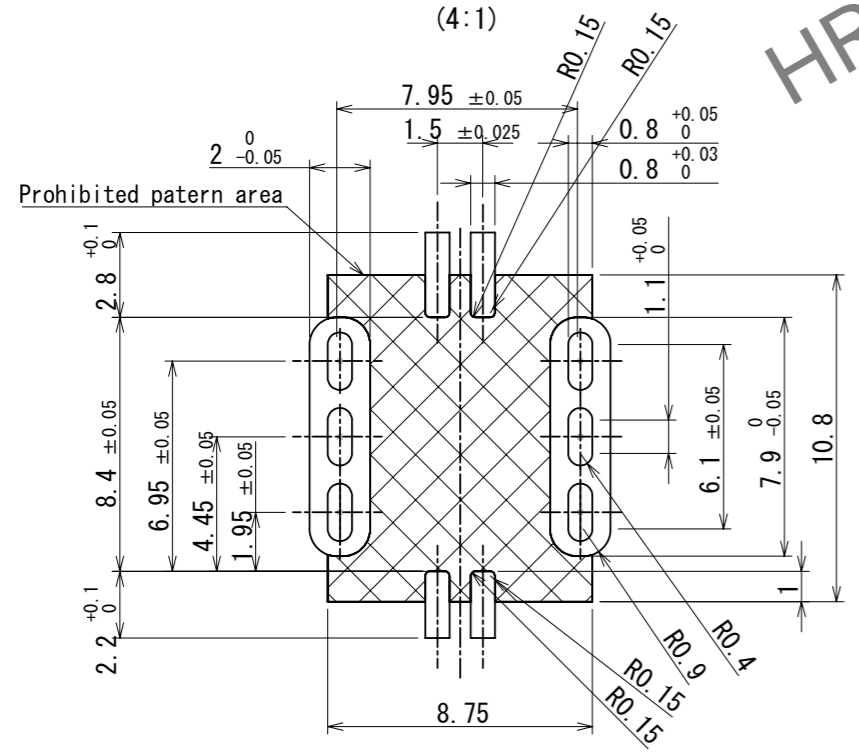
MATED CONNECTORS



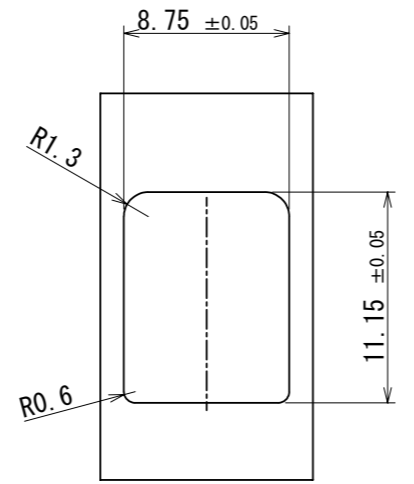
- NOTES
1. RECOMMENDED REFLOW PROFILE (SEE RIGHT GRAPH)
CYCLE TIME: UP TO 2 CYCLES OF REFLOW SOLDERING ARE POSSIBLE UNDER THE CONDITIONS, PROVIDED THAT THERE IS A RETURN TO NOMAL TEMPERATURE BETWEEN THE FIRST AND SECOND CYCLE.
PEAK TEMPERATURE: 250°C
230°C MIN. FOR 20 TO 40 SECONDS.
PREHEATING AREA 150~180°C FOR 60 TO 120 SECONDS.
 2. HAND SOLDERING: 280~300°C, 2SECONDS MAX.
 3. CONTACT COPLANARITY: 0.1mm MAX.
 4. RECOMMENDED THICKNESS OF PCB: 1.6mm
 5. RECOMMENDED THICKNESS OF SOLDERING PASTE: 0.12mm



RECOMMENDED PCB LAYOUT (4:1)



RECOMMENDED PANEL CUTOUT



3	BRASS	TIN PLATING					
2	PA	BLACK	5	POLYIMIDE PICK & PLACE TAPE			
1	COPPER ALLOY	TIN PLATING	4	BRASS TIN PLATING			
NO.	MATERIAL	FINISH	REMARKS	NO.	MATERIAL	FINISH	REMARKS

UNITS		SCALE	COUNT	DESCRIPTION OF REVISIONS	DESIGNED	CHECKED	DATE
mm		2:1	0	DIS-T-00018480	KN. YANAGIMOTO	EJ. WAKATSUKI	2023.07.03
APPROVED : AR. SHIRAI 2017.07.19				DRAWING NO. EDC-362126-00-00			
CHECKED : TH. MIZUGUCHI 2017.07.19				PART NO. GT32-4DP-1.5V(D)			
DESIGNED : TS. KUBOTA 2017.07.19				CODE NO. CL0782-0068-2-00			
DRAWN : TS. KUBOTA 2017.07.19							