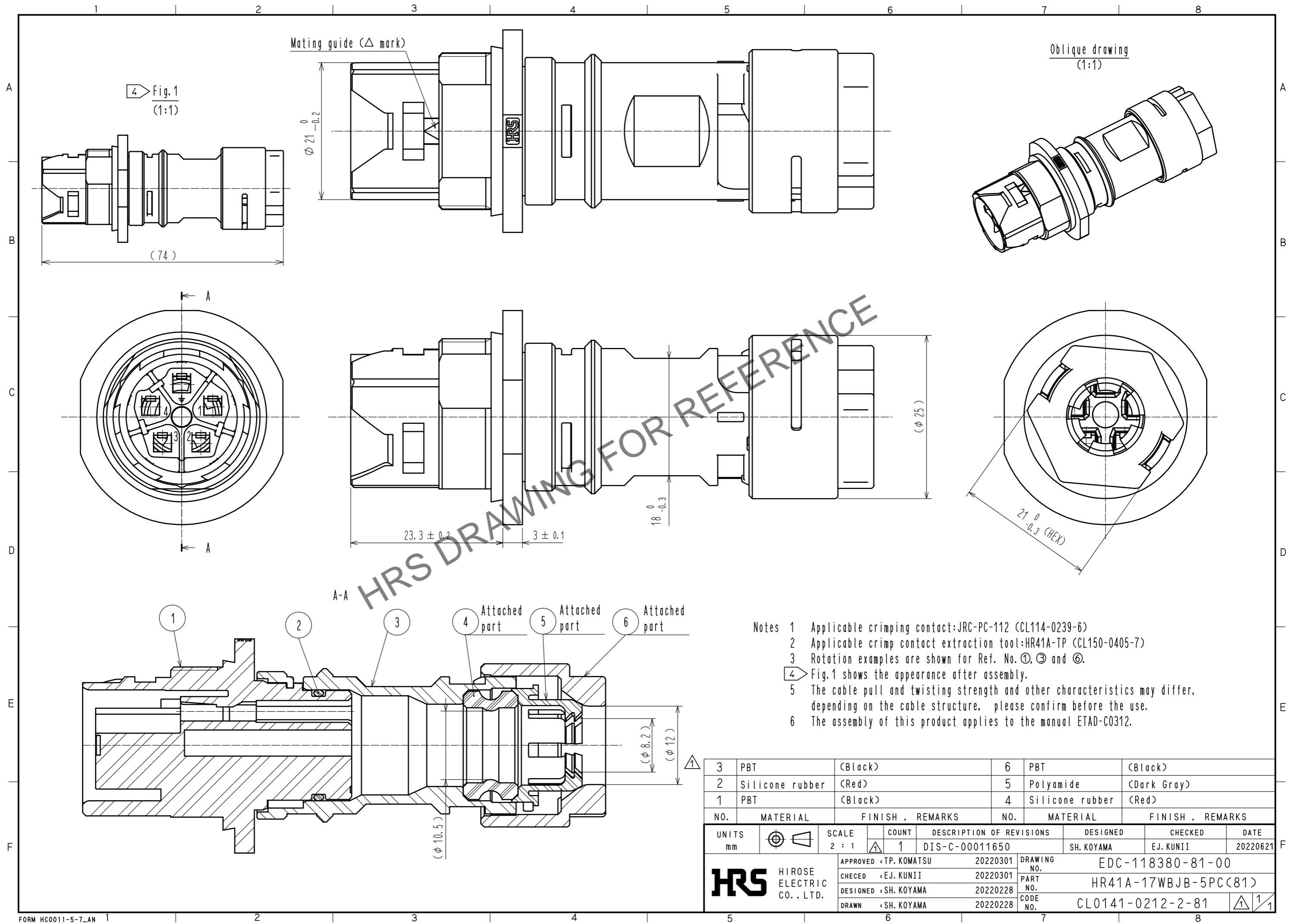


Jun.1.2024 Copyright 2024 HIROSE ELECTRIC CO., LTD. All Rights Reserved.  
In case of consideration for using Automotive equipment / device which demand high reliability, kindly contact our sales window correspondents.



- Notes
- 1 Applicable crimping contact: JRC-PC-112 (CL114-0239-6)
  - 2 Applicable crimp contact extraction tool: HR41A-TP (CL150-0405-7)
  - 3 Rotation examples are shown for Ref. No. ①, ③ and ⑥.
  - ④ Fig.1 shows the appearance after assembly.
  - 5 The cable pull and twisting strength and other characteristics may differ, depending on the cable structure, please confirm before the use.
  - 6 The assembly of this product applies to the manual ETAD-C0312.

NO.	MATERIAL	FINISH	REMARKS	NO.	MATERIAL	FINISH	REMARKS
3	PBT	(Black)		6	PBT	(Black)	
2	Silicone rubber	(Red)		5	Polyamide	(Dark Gray)	
1	PBT	(Black)		4	Silicone rubber	(Red)	

UNITS	SCALE	COUNT	DESCRIPTION OF REVISIONS	DESIGNED	CHECKED	DATE
mm	2 : 1	1	DIS-C-00011650	SH. KOYAMA	EJ. KUNII	20220621

APPROVED	CHECKED	DESIGNED	DRAWN	DATE	DRAWING NO.	PART NO.	CODE NO.
TP. KOMATSU	EJ. KUNII	SH. KOYAMA	SH. KOYAMA	20220301	EDC-118380-81-00	HR41A-17WBJB-5PC(81)	CL0141-0212-2-81