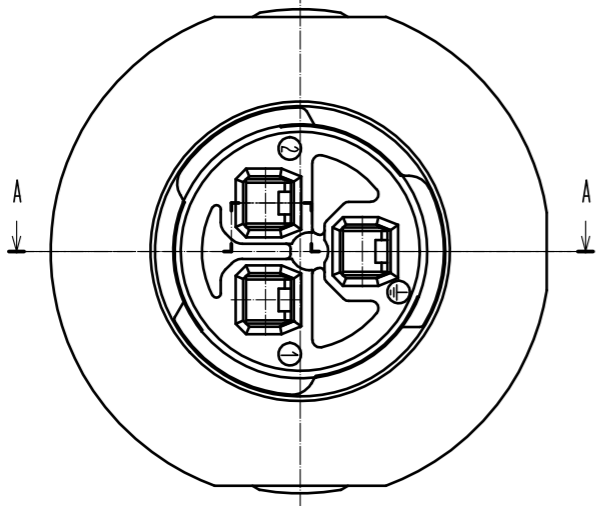
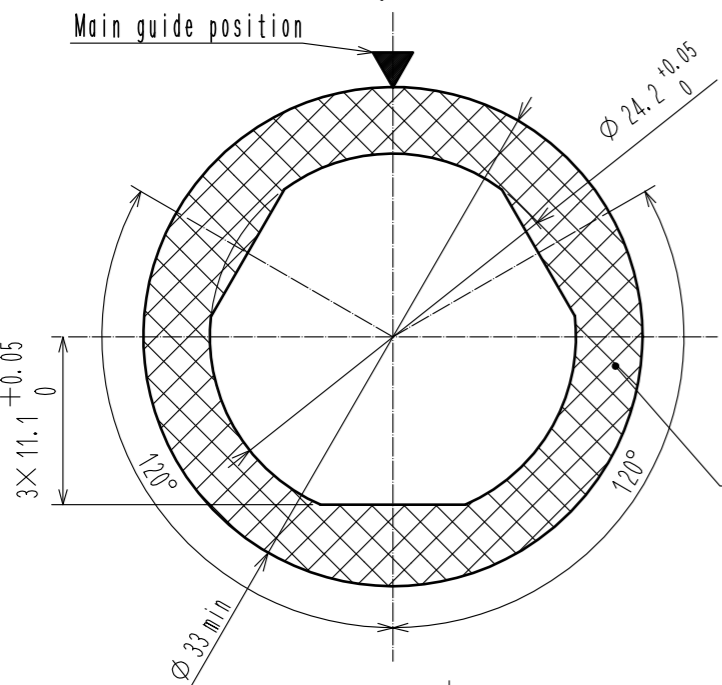
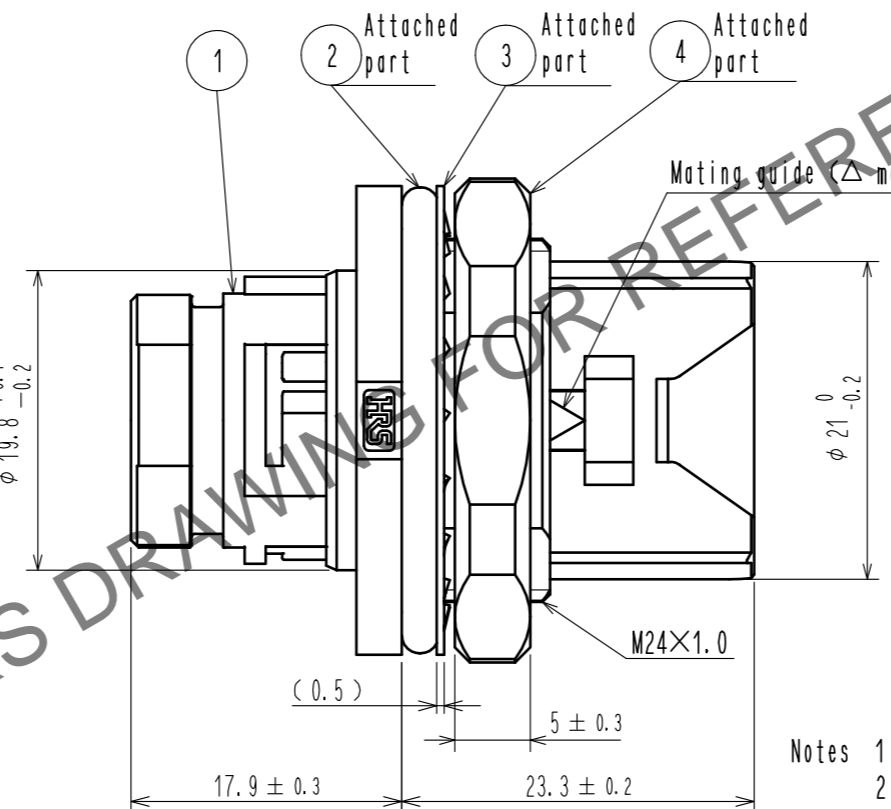
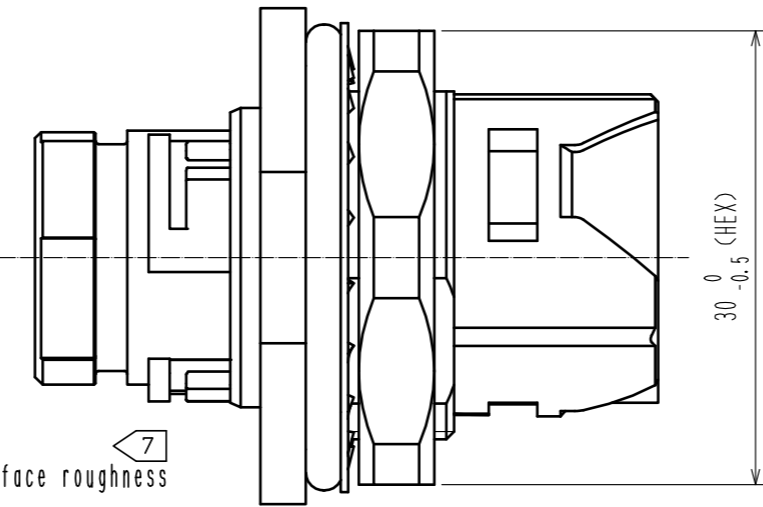
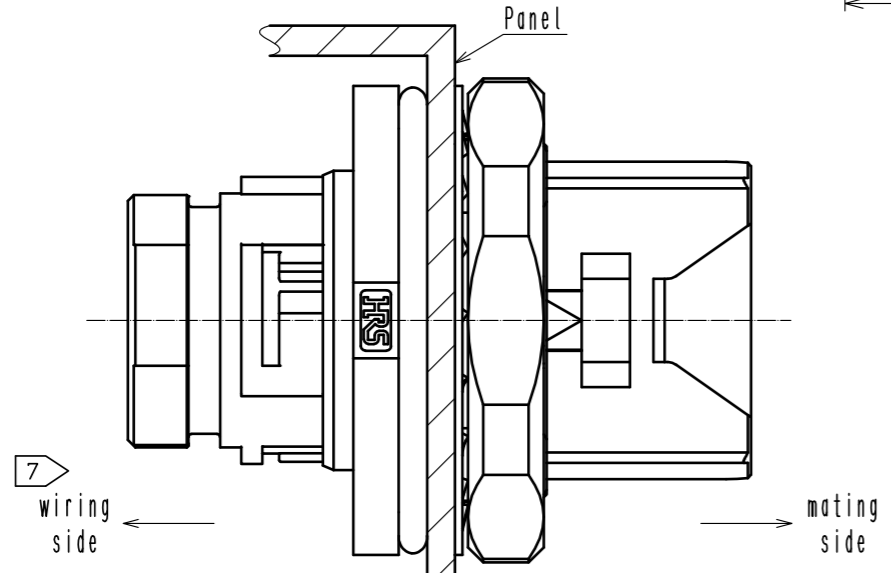


May.1.2024 Copyright 2024 HIROSE ELECTRIC CO., LTD. All Rights Reserved.  
In case of consideration for using Automotive equipment / device which demand high reliability, kindly contact our sales window correspondents.

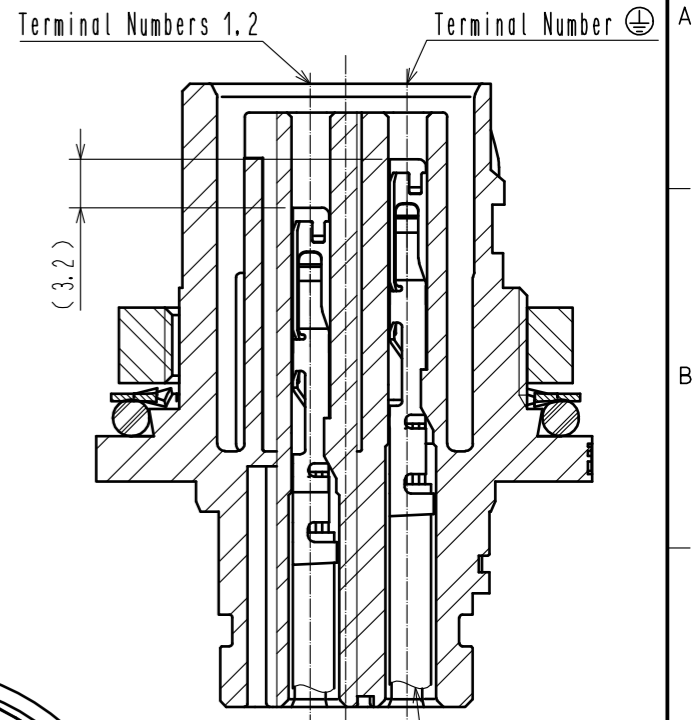
5 Fig.1 The recommended panel dimension(t=2.0(MAX))  
(As view from mating side)



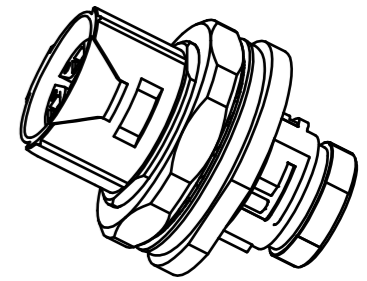
6 Fig.2 The state applicable connector set up



4 Sequence structure  
(after incorporating conforming crimp terminals)



Oblique drawing  
(1:1)



- Notes
- 1 Applicable crimping contact:HR41A-SC-※
  - 2 Applicable crimp contact extraction tool:HR41A-TP (CL150-0405-7)
  - 3 The recommended tightening torque of Ref.No.④ to be 3 N·m.
  - 4 Terminal numbers ⊕ and terminal numbers 1 and 2 are sequence structures (step contact).
  - 5 Fig.1 shows the recommended panel dimension.
  - 6 Fig.2 shows the state applicable connector set up.  
When connector set up, it in order of Ref.No.②, panel, Ref.No.③, Ref.No.④.  
Please check Ref.No.② is properly set at the groove of Ref.No.①.  
While mounting the connector, make sure that Ref.No.② is not caught.
  - 7 The surface roughness of the cross-hatched part should be applied to the wiring side.

2	Silicone rubber	(Red)	4	PBT	(Black)
1	PBT	(Black)	3	Stainless steel	
NO.	MATERIAL	FINISH . REMARKS	NO.	MATERIAL	FINISH . REMARKS
UNITS mm		SCALE 2 : 1	COUNT 1	DESCRIPTION OF REVISIONS DIS-C-00011650	DESIGNED SH. KOYAMA
<b>HRS</b> HIROSE ELECTRIC CO., LTD.		APPROVED : TP. KOMATSU	20220301	DRAWING NO.	EDC-118400-81-00
		CHECED : EJ. KUNII	20220301	PART NO.	HR41A-17WBRA-3SC(81)
		DESIGNED : SH. KOYAMA	20220228	CODE NO.	CL0141-0218-9-81
		DRAWN : SH. KOYAMA	20220228		