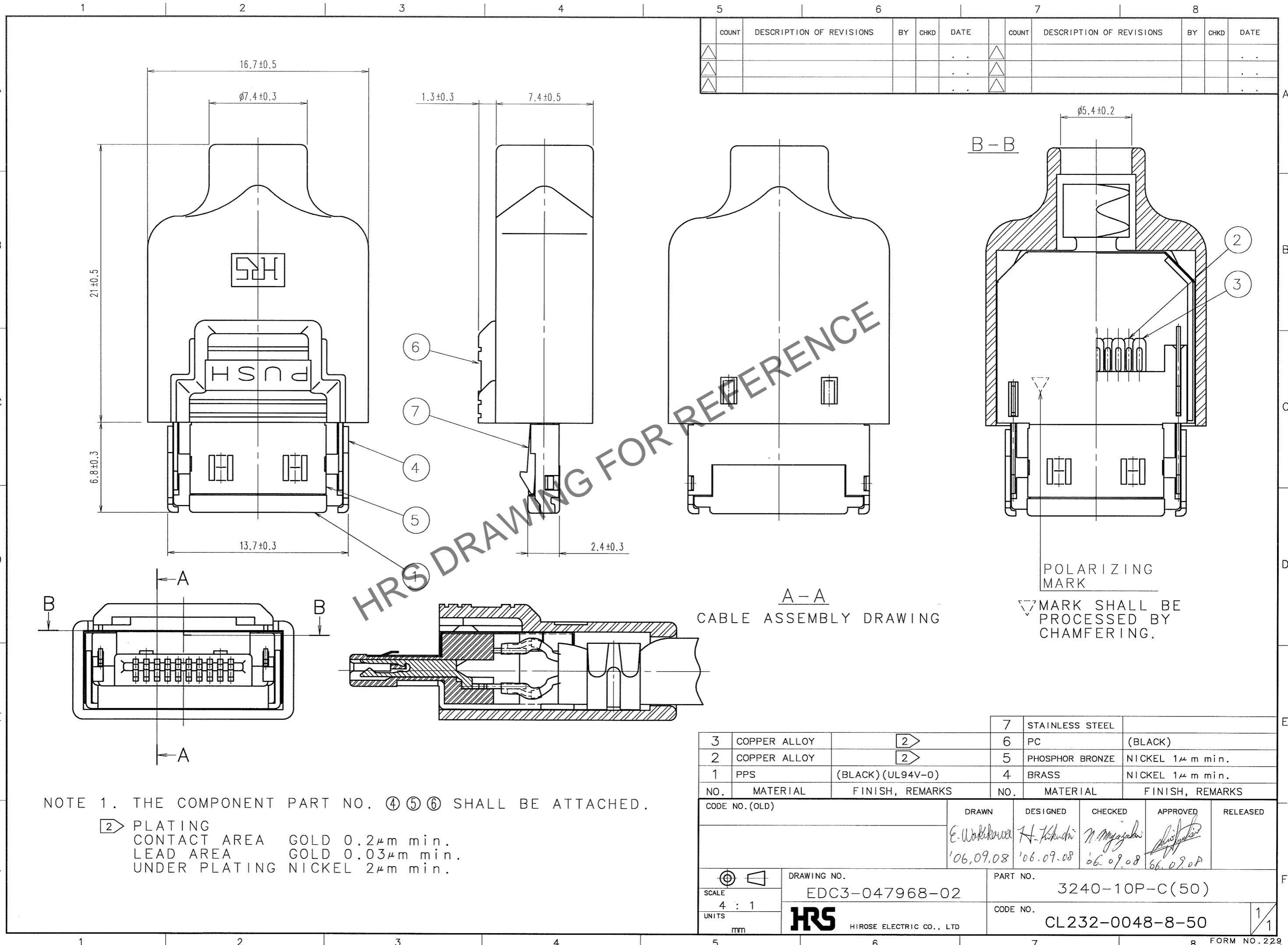


Mar.1.2026 Copyright 2026 HIROSE ELECTRIC CO., LTD. All Rights Reserved.
In case of consideration for using Automotive equipment / device which demand high reliability, kindly contact our sales window correspondents.



COUNT	DESCRIPTION OF REVISIONS	BY	CHKD	DATE	COUNT	DESCRIPTION OF REVISIONS	BY	CHKD	DATE
△				..	△				..
△				..	△				..
△				..	△				..

HRS DRAWING FOR REFERENCE

A-A
CABLE ASSEMBLY DRAWING

B-B
POLARIZING MARK
▽ MARK SHALL BE PROCESSED BY CHAMFERING.

NOTE 1. THE COMPONENT PART NO. ④ ⑤ ⑥ SHALL BE ATTACHED.

② PLATING
CONTACT AREA GOLD 0.2μm min.
LEAD AREA GOLD 0.03μm min.
UNDER PLATING NICKEL 2μm min.

3	COPPER ALLOY		②	7	STAINLESS STEEL	
2	COPPER ALLOY		②	6	PC	(BLACK)
1	PPS	(BLACK) (UL94V-0)		5	PHOSPHOR BRONZE	NICKEL 1μm min.
				4	BRASS	NICKEL 1μm min.
NO.	MATERIAL	FINISH, REMARKS		NO.	MATERIAL	FINISH, REMARKS

CODE NO. (OLD)	DRAWN	DESIGNED	CHECKED	APPROVED	RELEASED
	E. Wakana	H. Kikuchi	N. Miyajima	[Signature]	
	'06.09.08	'06.09.08	'06.09.08	'06.09.08	

SCALE 4 : 1	DRAWING NO. EDC3-047968-02	PART NO. 3240-10P-C(50)
UNITS mm	HRS HIROSE ELECTRIC CO., LTD	CODE NO. CL232-0048-8-50

1/1