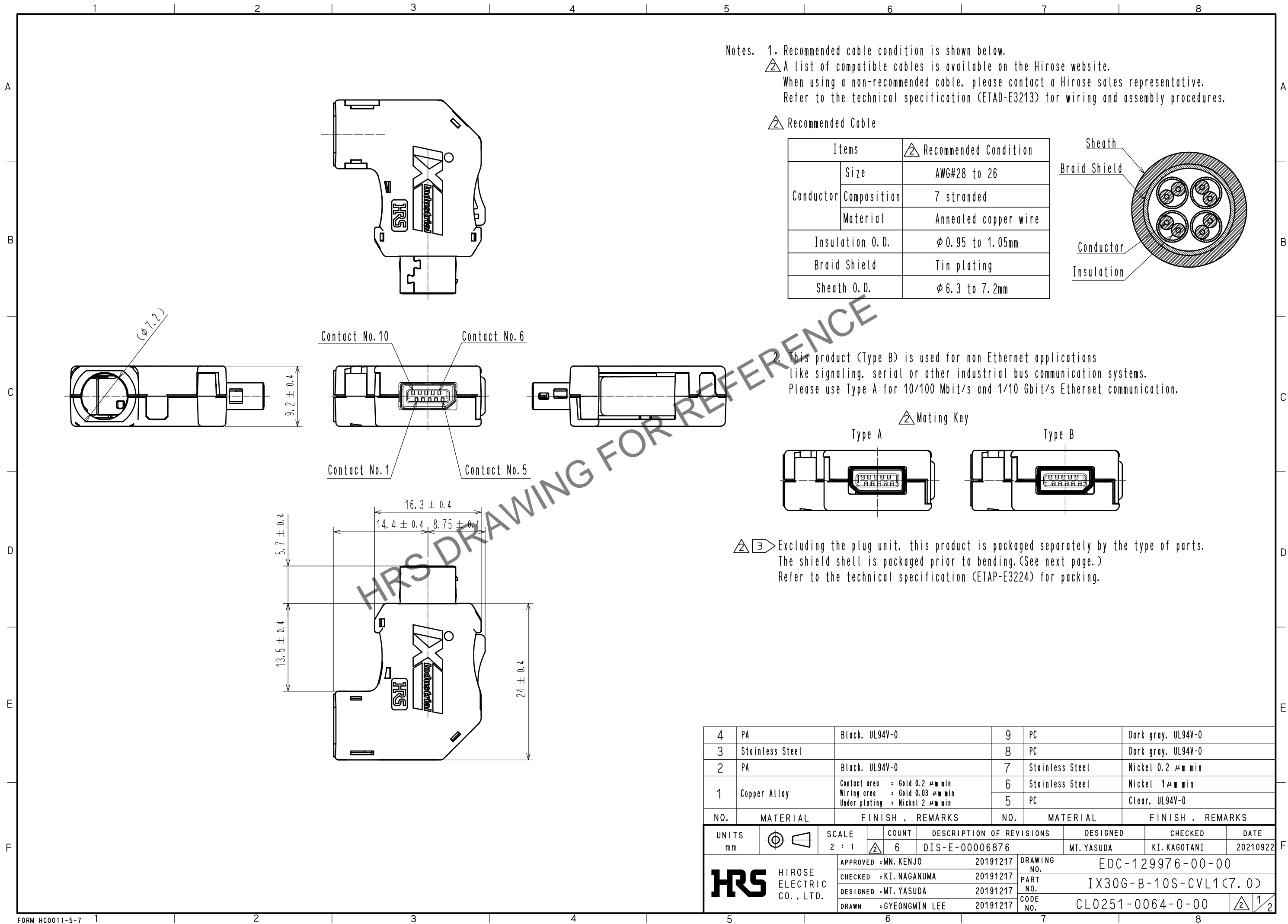
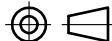
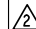



Mar.1.2024 Copyright 2024 HIROSE ELECTRIC CO., LTD. All Rights Reserved.
In case of consideration for using Automotive equipment / device which demand high reliability, kindly contact our sales window correspondents.

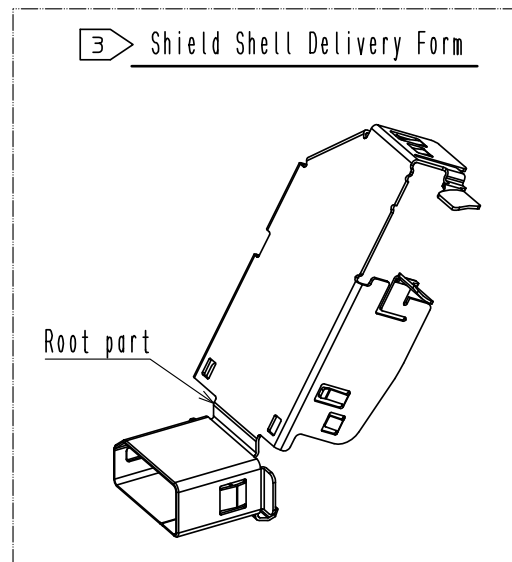


4	PA	Black, UL94V-0	9	PC	Dark gray, UL94V-0
3	Stainless Steel		8	PC	Dark gray, UL94V-0
2	PA	Black, UL94V-0	7	Stainless Steel	Nickel 0.2 μm min
1	Copper Alloy	Contact area : Gold 0.2 μm min Wiring area : Gold 0.03 μm min Under plating : Nickel 2 μm min	6	Stainless Steel	Nickel 1μm min
			5	PC	Clear, UL94V-0
NO.	MATERIAL	FINISH . REMARKS	NO.	MATERIAL	FINISH . REMARKS

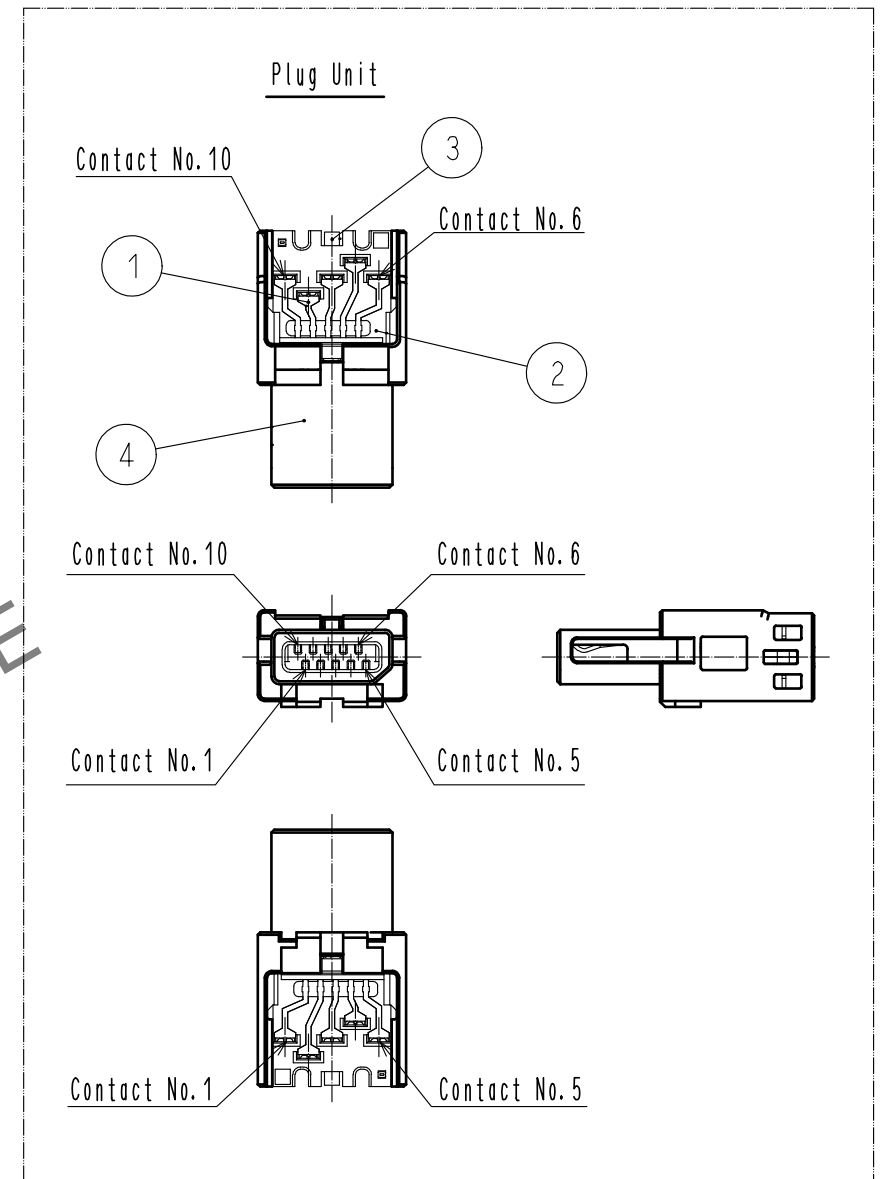
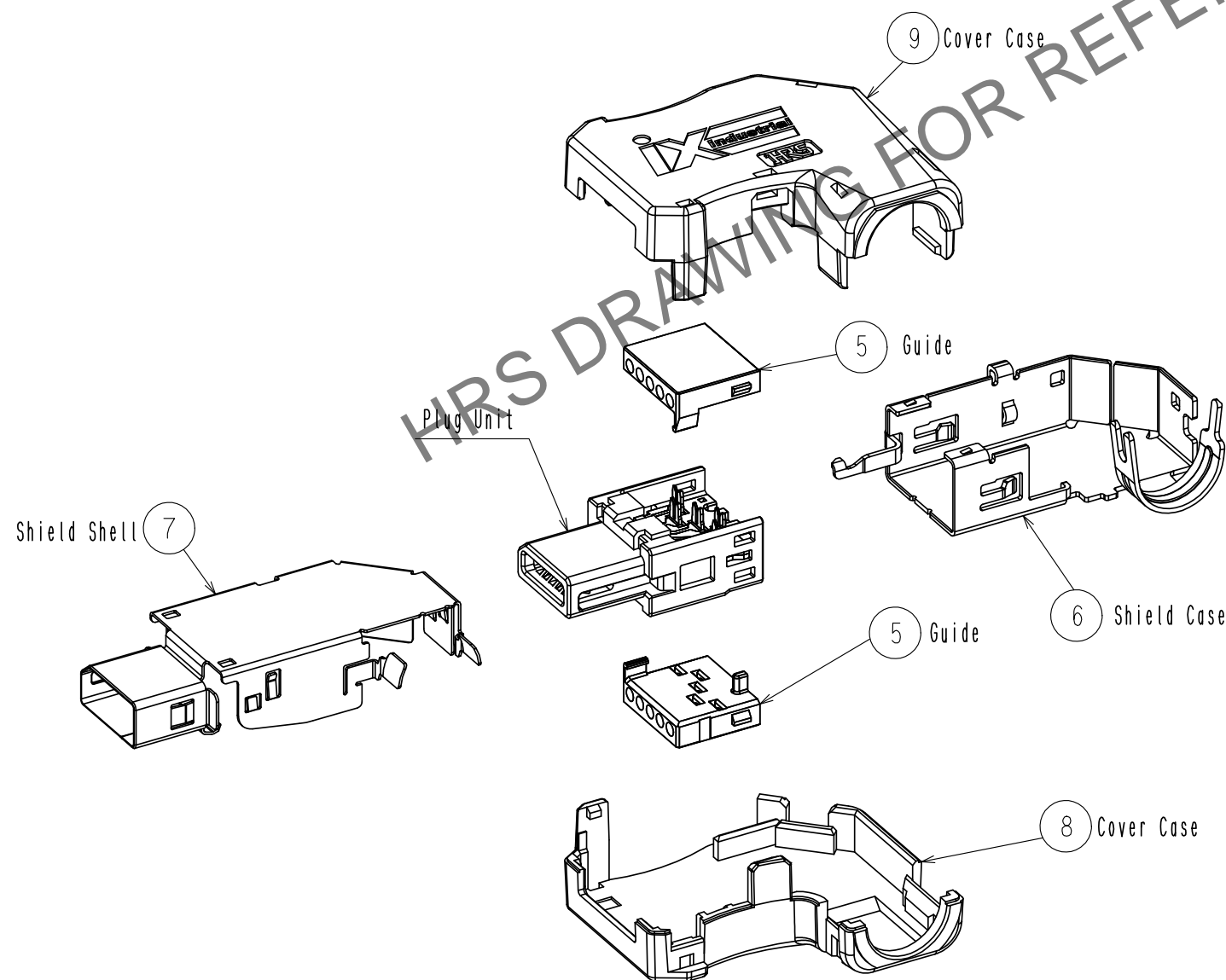
UNITS mm			SCALE 2 : 1		COUNT 6	DESCRIPTION OF REVISIONS DIS-E-00006876	DESIGNED MT. YASUDA	CHECKED KI. KAGOTANI	DATE 20210922
-------------	--	---	----------------	---	------------	--	------------------------	-------------------------	------------------

	HIROSE ELECTRIC CO., LTD.	APPROVED : MN. KENJO		20191217	DRAWING NO.	EDC-129976-00-00	
		CHECKED : KI. NAGANUMA		20191217		PART NO.	IX30G-B-10S-CVL1(7.0)
		DESIGNED : MT. YASUDA		20191217	CODE NO.		CL0251-0064-0-00
		DRAWN : GYEONGMIN LEE		20191217			

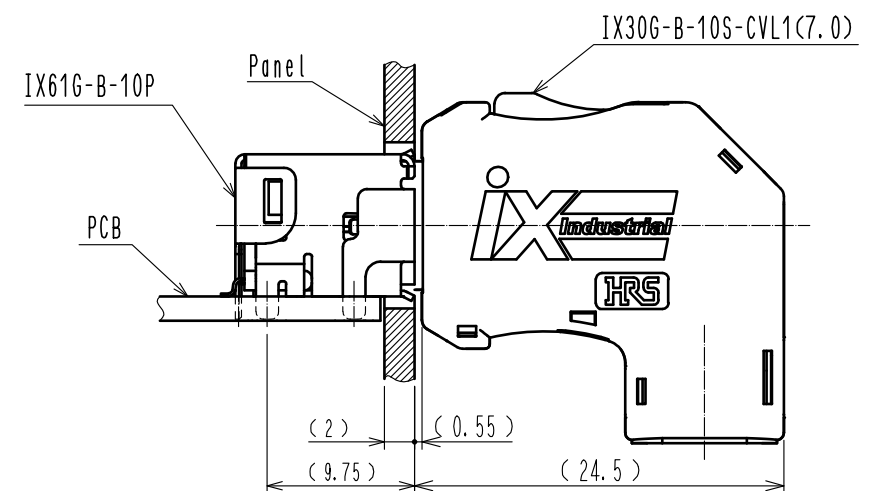
Mar.1.2024 Copyright 2024 HIROSE ELECTRIC CO., LTD. All Rights Reserved.
In case of consideration for using Automotive equipment / device which demand high reliability, kindly contact our sales window correspondents.



3 Product Structure



△ Mated Condition



HRS

DRAWING NO.	EDC-129976-00-00
PART NO.	IX30G-B-10S-CVL1(7.0)
CODE NO.	CL0251-0064-0-00

2/2