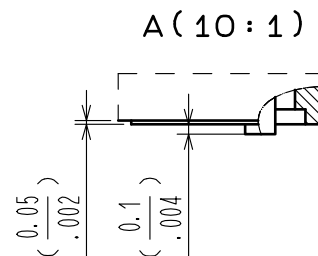
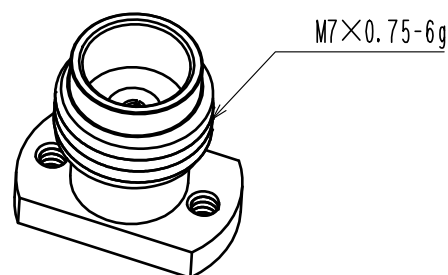
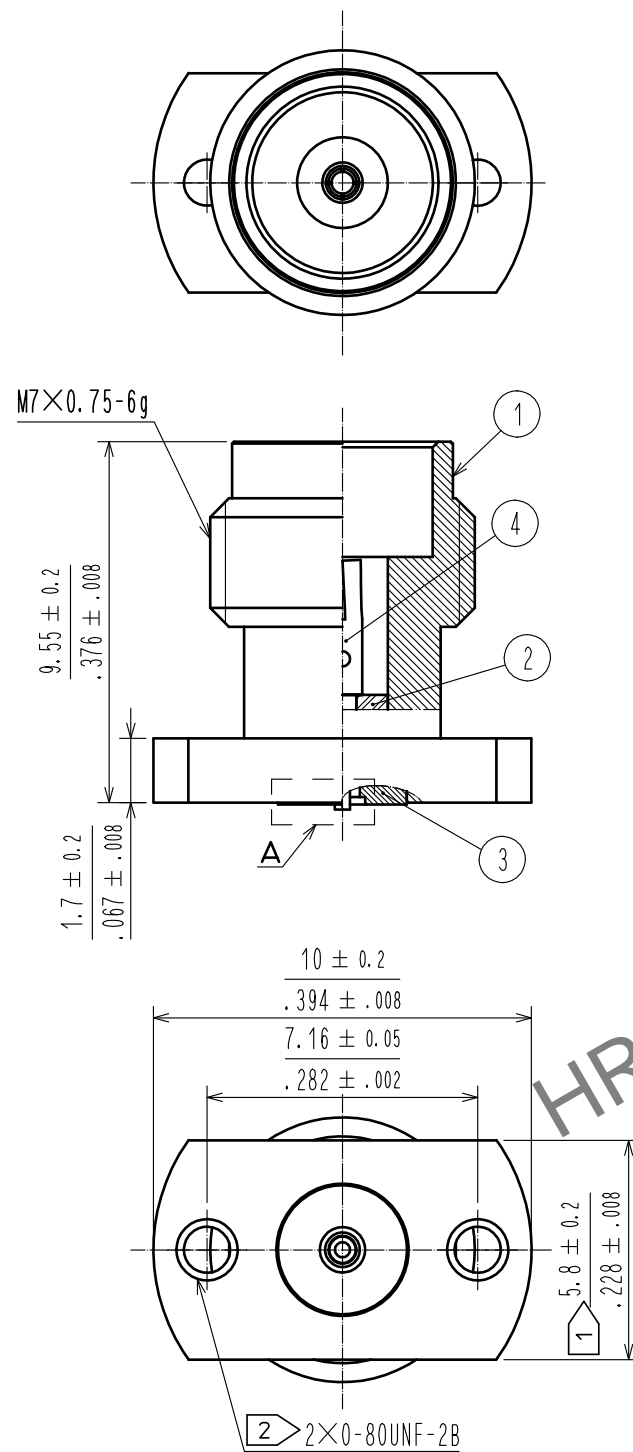


May.1.2024 Copyright 2024 HIROSE ELECTRIC CO., LTD. All Rights Reserved.
In case of consideration for using Automotive equipment / device which demand high reliability, kindly contact our sales window correspondents.

Attachment: Unified HEX socket head cap thread 0-80UNF 3/16inch

4 (Deleted duplication)



NOTES 1 WHEN MATING THE CONNECTOR, PLEASE HOLD THE FRAISE WITH SPANNER
NOT TO PLACE STRESS ON PCB BY THE TORQUE.

2 0-80UNF-2B SCREW TIGHTENING TORQUE IS $0.09N \cdot m$. PLEASE TIGHTEN THE SCREWS EVENLY
WHEN MOUNTING THE CONNECTORS TO ENSURE STABLE ELECTRICAL CONTACT.

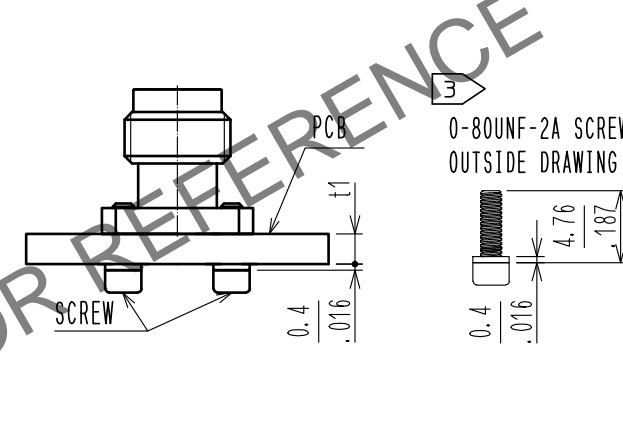
3 PLEASE USE ATTACHED SCREW AND WASHER FOR PCB MOUNTING.
ATTACHED SCREW AND WASHER APPLY PCB THICKNESS $t1=1.6$ TO $2.65mm$.

4 INDICATES THE AREA THAT SOLDER MASK IS PROHIBITED.

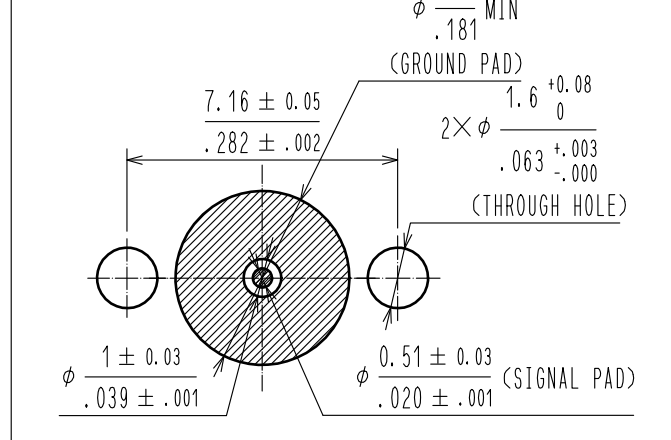
5. THIS PRODUCT IS A SOLDERLESS CONNECTOR FOR PROTOTYPE EVALUATION OF HIGH SPEED TRANSMISSION BOARDS.
IT IS NOT RECOMMENDED FOR USE IN ACTUAL COMMERCIAL EQUIPMENT.

6. THIS CONNECTOR IS OPTIMIZED FOR IMPEDANCE 42.5Ω SIGNAL LINE.

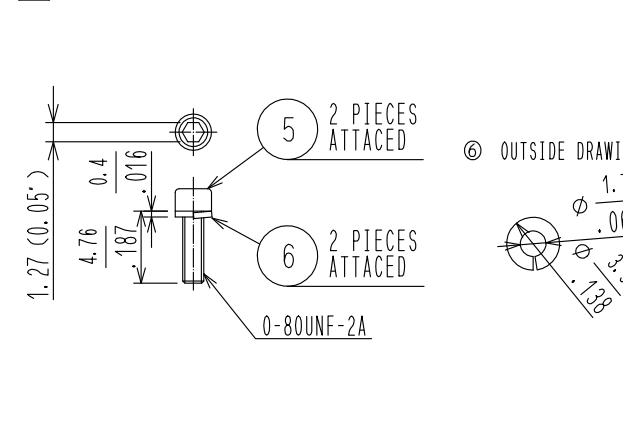
MOUNTING DRAWING(2:1)



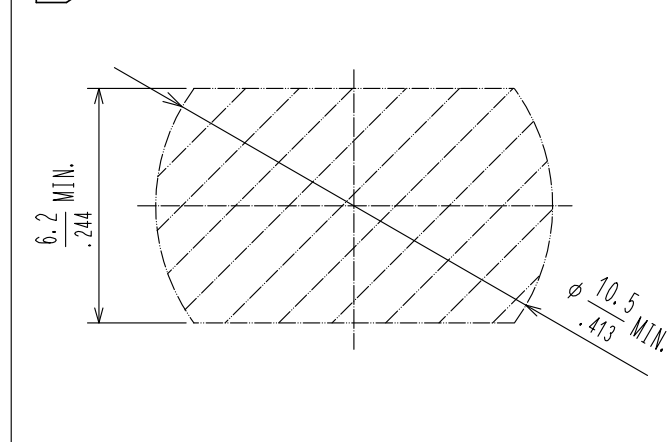
LAND PATTERN DRAWING



3 DRAWING OF SOCKET HEAD CAP SCREW (2:1)



4 SOLDER MASK PROHIBITED AREA



RoHS COMPLIANT

3	STAINLESS STEEL	GOLD PLATING	6	STAINLESS STEEL	SPRING WASHER
2	PTFE		5	STEEL	0-80UNF-2A SCREW
1	STAINLESS STEEL	PASSIVATE	4	BERYLLIUM COPPER	GOLD PLATING
NO.	MATERIAL	FINISH . REMARKS	NO.	MATERIAL	FINISH . REMARKS
UNITS mm/inch		SCALE 5 : 1	COUNT 2	DESCRIPTION OF REVISIONS DIS-D-00016641	DESIGNED TS. KANEKO
	HIROSE ELECTRIC CO., LTD.	APPROVED : KY. SHIMIZU 20160830	CHECKED : TO. KATAYAMA 20160830	DESIGNED : TP. MATSUMOTO 20160829	DRAWN : TP. MATSUMOTO 20160829
DRAWING NO. EDC-368164-17-01					CHECKED TS. NAKAGAWA
PART NO. H2. 4-R-SR2-IN(17)					DATE 20230824
CODE NO. CL0338-0602-0-17					1/1