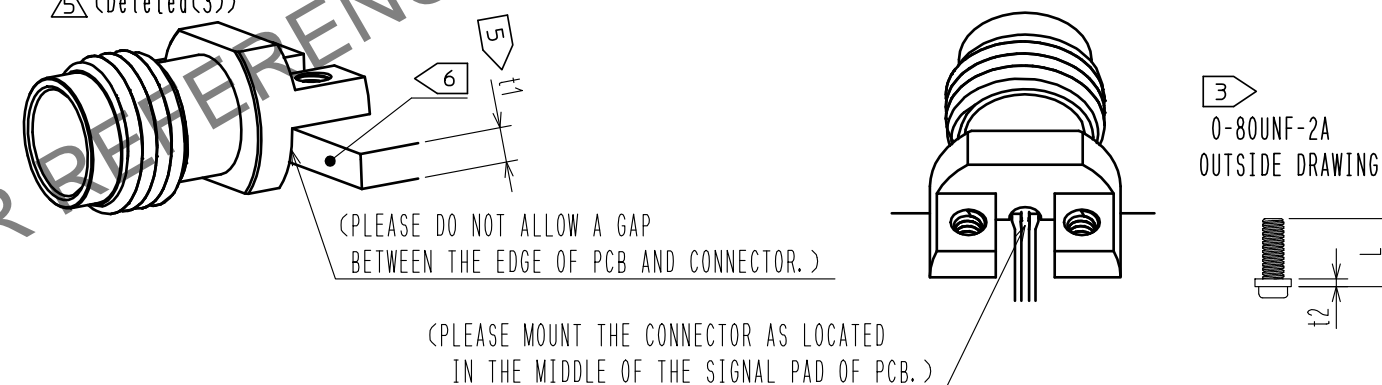


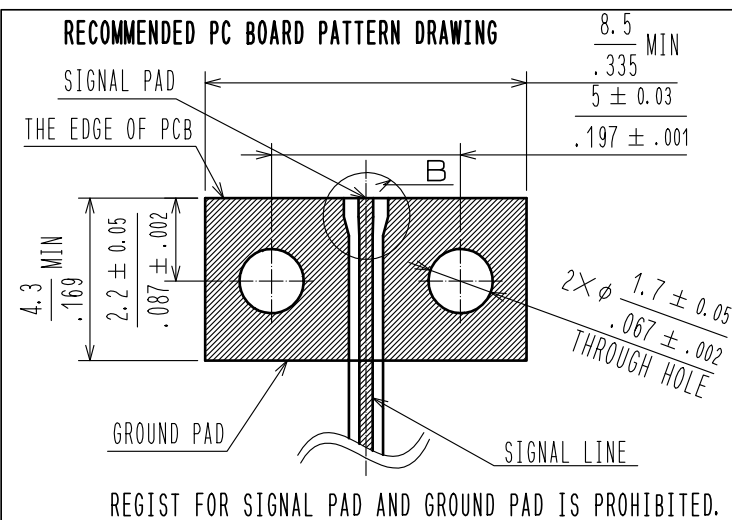
- NOTES
- 1 WHEN MATING THE CONNECTOR, PLEASE HOLD MILLING AREA OF 6.4 ± 0.2 WITH A SPANNER
NOT TO PLACE STRESS ON PCB BY THE TORQUE.
 - 2 0-80UNF-2B SCREW TIGHTENING TORQUE IS 0.09 N·m. PLEASE TIGHTEN THE SCREWS EVENLY WHEN
MOUNTING THE CONNECTORS TO ENSURE STABLE ELECTRICAL CONTACT.
 - 3 PLEASE USE A PCB MOUNTING SCREW OF THE LENGTH OF L(mm).
THE LENGTH OF L(mm) IS PCB THICKNESS t_1 (mm) + SPRING WASHER THICKNESS t_2 (mm) + 1.8(mm).
PLEASE USE A SCREW WITH SPRING WASHER.
 - 4 THE INDICATED DIMENSION IS THE CASE OF WHICH DIELECTRIC CONSTANT OF SUBSTRATE
IS 3.35 AND THICKNESS IS $t=0.2$ mm. LAND PATTERN LAYOUT DEPENDS ALSO ON ELECTRIC CONSTANT,
THICKNESS AND LAYER CONSTRUCTION OF PCB. FOR BETTER PERFORMANCE, SIMULATION OF PCB WITH
CONNECTOR IS RECOMMENDED.
 - 5 RECOMMENDED PCB THICKNESS t_1 IS GREATER THAN 1.0mm.
 - 6 SIDE PLATING OF THE BOARD IS RECOMMENDED.
 - 7 THIS PRODUCT IS A SOLDERLESS CONNECTOR FOR PROTOTYPE EVALUATION OF HIGH SPEED TRANSMISSION BOARDS.
IT IS NOT RECOMMENDED FOR USE IN ACTUAL COMMERCIAL EQUIPMENT.

MOUNTING OF CONNECTOR

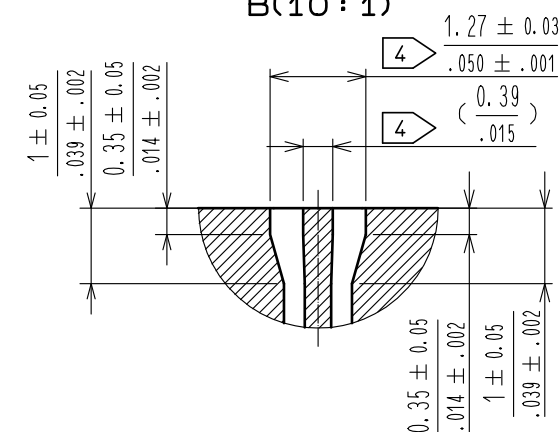
- (1) WHEN THE CONNECTOR IS MOUNTED ON PCB. PLEASE DO NOT ALLOW A GAP BETWEEN THE EDGE OF PCB AND CONNECTOR.
- (2) PLEASE MOUNT THE CONNECTOR AS LOCATED IN THE MIDDLE OF THE SIGNAL PAD OF PCB.
- △ (Deleted(3))

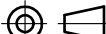




RECOMMENDED PC BOARD PATTERN DRAWING



(DRAWING CHANGED)
B(10: 1)



2	STAINLESS STEEL	PASSIVATE	5	POLYETHER IMIDE						
1	BRASS	NICKEL PLATING	4	POLYETHER IMIDE						
			3	BERYLLIUM COPPER	GOLD PLATING					
NO.	MATERIAL	FINISH . REMARKS		NO.	MATERIAL	FINISH . REMARKS				
UNITS mm/inch				SCALE 5 : 1		COUNT 2	DESCRIPTION OF REVISIONS DIS-D-00016641	DESIGNED TS. KANEKO	CHECKED TS. NAKAGAWA	DATE 20230821
 HIROSE ELECTRIC CO., LTD.		APPROVED : KY. SHIMIZU		20160830		DRAWING NO. EDC-368795-00-01				
		CHECKED : TO. KATAYAMA		20160830		PART NO. H2. 4-LR-SR2				
		DESIGNED : TP. MATSUMOTO		20160829		CODE NO. CL0338-0603-0-00				
		DRAWN : TP. MATSUMOTO		20160829		