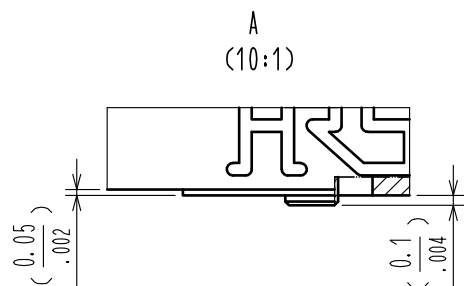
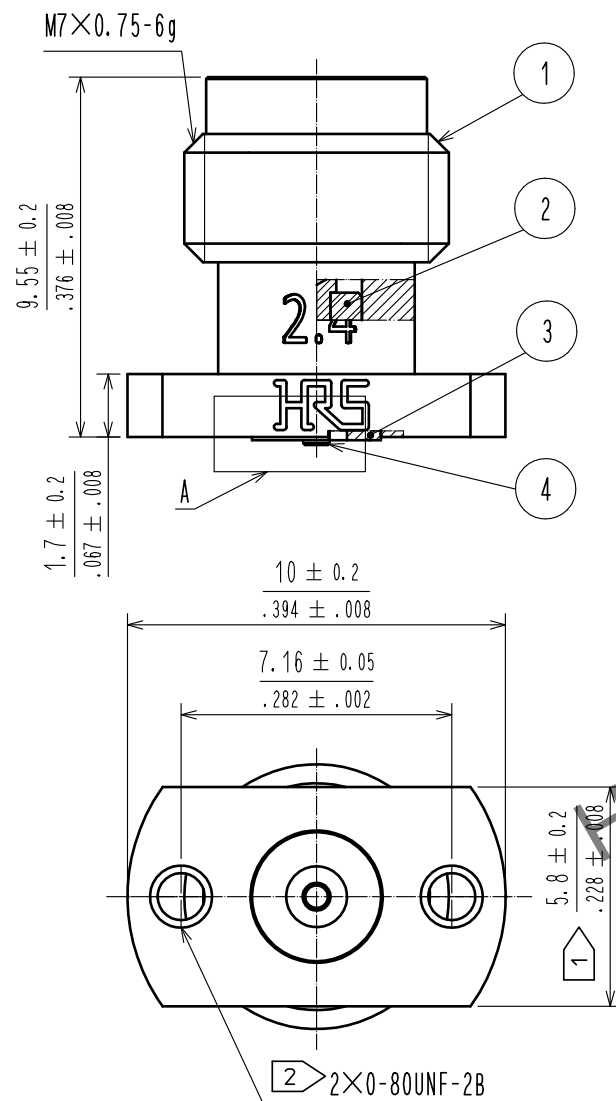
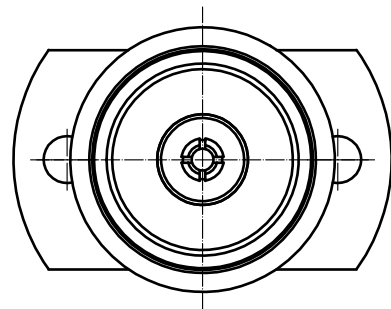
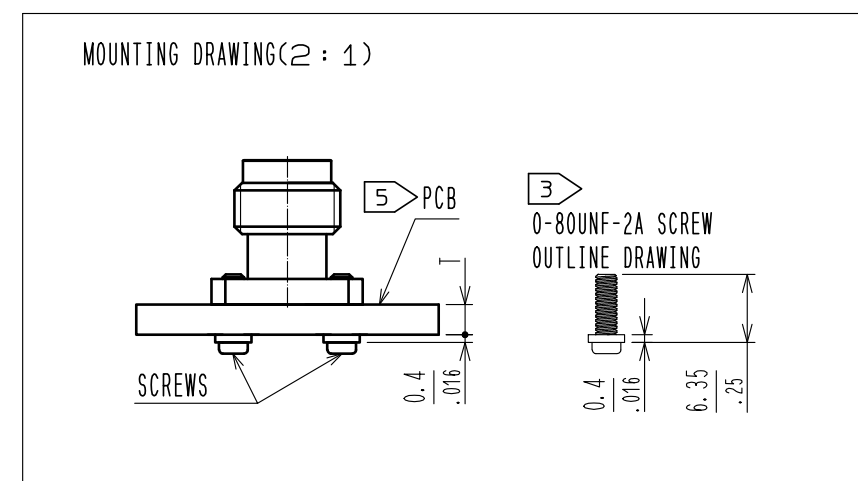
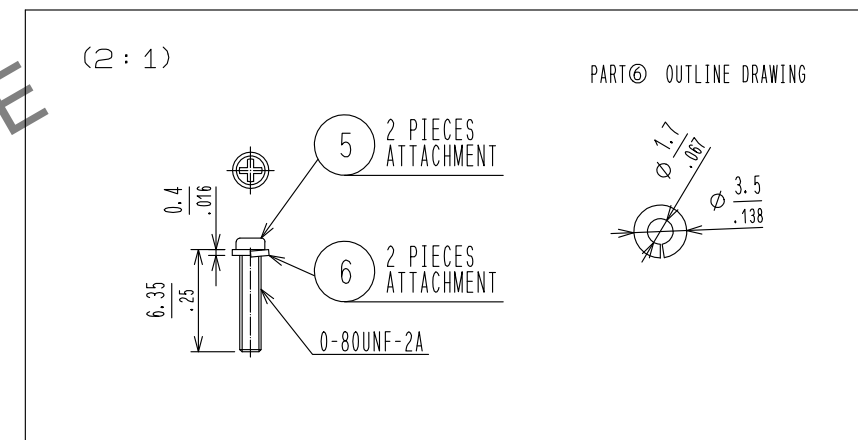
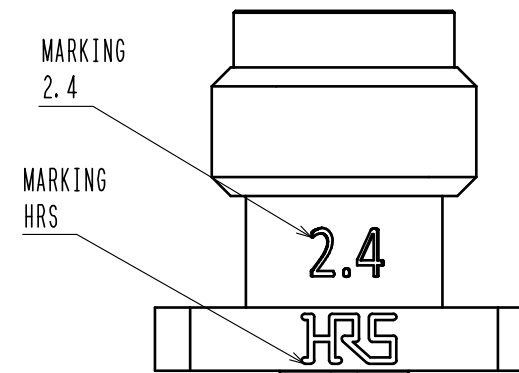
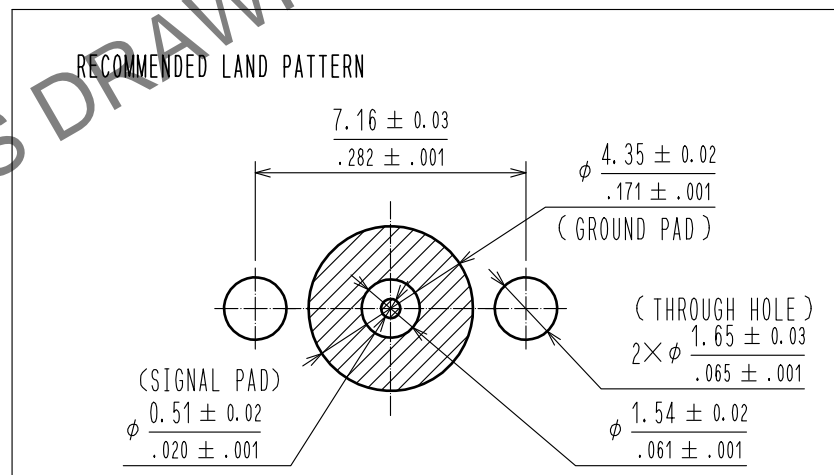
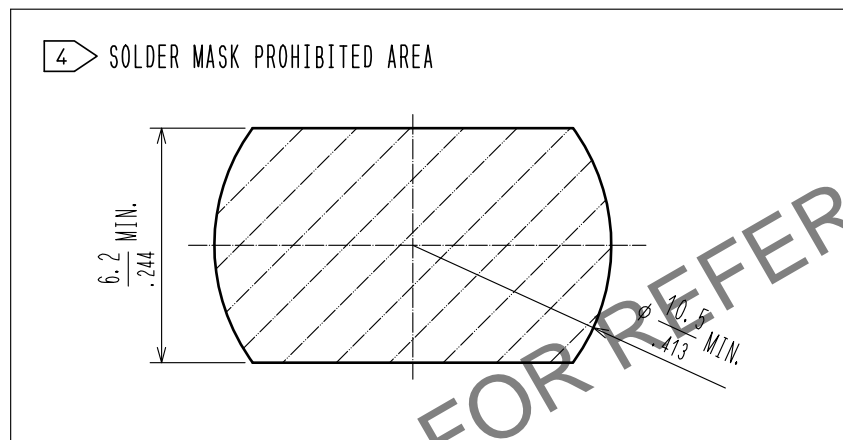
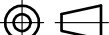
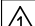



Jun.1.2024 Copyright 2024 HIROSE ELECTRIC CO., LTD. All Rights Reserved.  
In case of consideration for using Automotive equipment / device which demand high reliability, kindly contact our sales window correspondents.



- NOTES
- PLEASE HOLD THE FLANGE WITH A SPANNER WHEN MATING THE CONNECTOR TO AVOID ANY TORQUE ACTING ON THE PCB.
  - 0-80UNF-2B SCREWS TIGHTENING TORQUE SHOULD BE 0.09N · m.  
PLEASE TIGHTEN THE SCREWS EVENLY WHEN MOUNTING THE CONNECTORS TO ENSURE STABLE ELECTRICAL CONTACT.
  - PLEASE USE ATTACHED SCREWS AND WASHERS FOR MOUNTING.  
ATTACHED SCREWS AND WASHERS ARE APPLICABLE ON PCB WITH THICKNESS T=2.4 TO 4.25mm.
  - THE SOLDER MASK PROHIBITED AREA IS INDICATED.
  - THIS PRODUCT IS A SOLDERLESS CONNECTOR FOR PROTOTYPE EVALUATION OF HIGH SPEED TRANSMISSION BOARDS.  
IT IS NOT RECOMMENDED FOR USE IN ACTUAL COMMERCIAL EQUIPMENT.



3	BERYLLIUM COPPER	GOLD PLATING		6	STAINLESS STEEL	SPRING WASHER				
2	PTFE			5	STEEL	0-80UNF-2A SCREW				
1	STAINLESS STEEL	PASSIVATE		4	STAINLESS STEEL	GOLD PLATING				
NO.	MATERIAL	FINISH.    REMARKS		NO.	MATERIAL	FINISH.    REMARKS				
UNITS mm / inch				SCALE 5 : 1	COUNT  1	DESCRIPTION OF REVISIONS DIS-D-00016641		DESIGNED TS. KANEKO	CHECKED TS. NAKAGAWA	DATE 20230824
 HIROSE ELECTRIC CO., LTD.		APPROVED : TS. NOBE		20180425		DRAWING NO. EDC-381620-11-00				
		CHECKED : MH. OGUSU		20180425		PART NO. H2. 4-R-SR2-1(11)				
		DESIGNED : AH. MARUYAMA		20180425		CODE NO. CL0338-0607-0-11				
		DRAWN : EDWIN TANG		20180425		