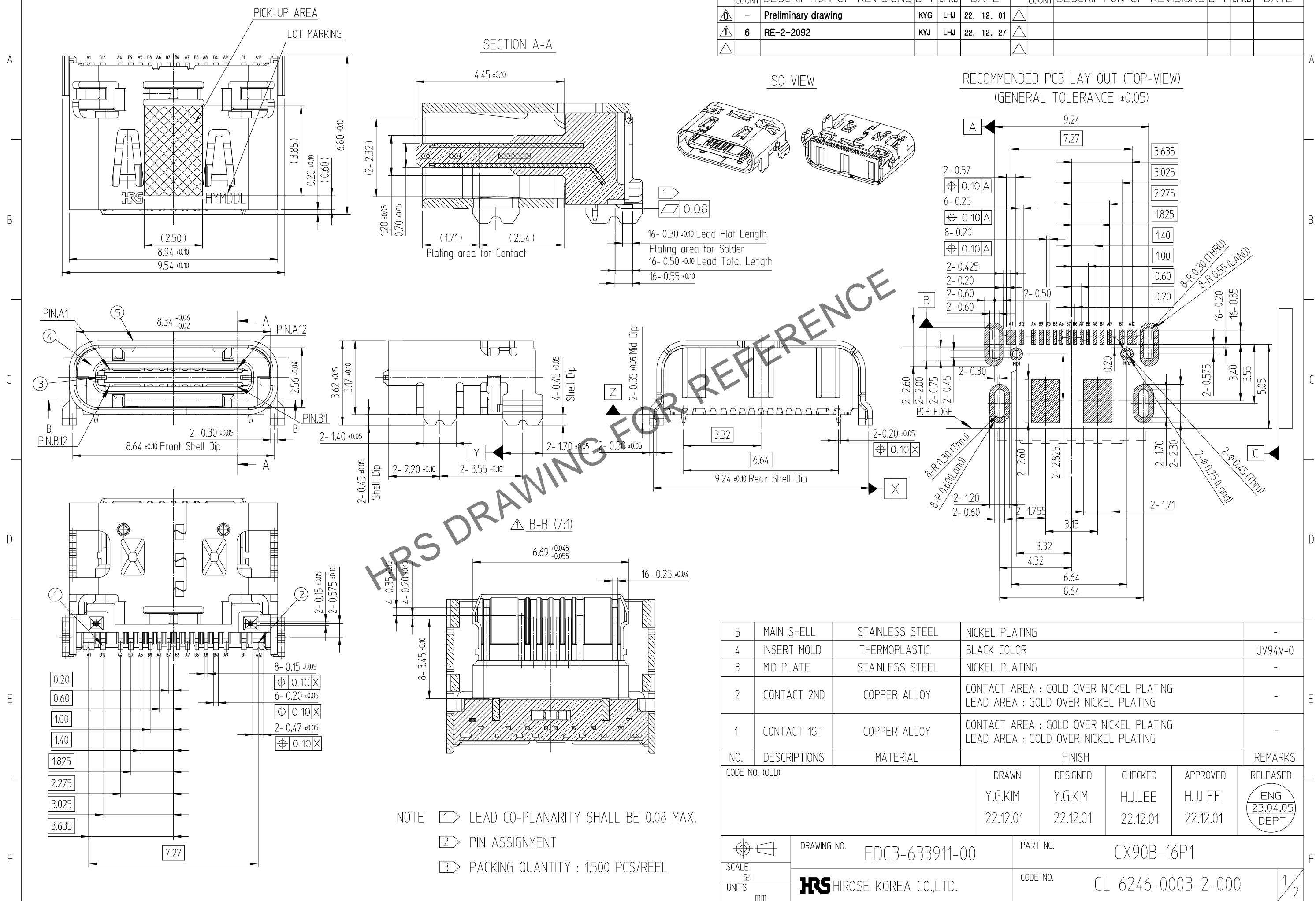


Jun.1.2024 Copyright 2024 HIROSE ELECTRIC CO., LTD. All Rights Reserved.
 In case of consideration for using Automotive equipment / device which demand high reliability, kindly contact our sales window correspondents.

△數 COUNT	訂正事項 DESCRIPTION OF REVISIONS	擔當 B	檢圖 CHKD	年月日 DATE	△數 COUNT	訂正事項 DESCRIPTION OF REVISIONS	擔當 B	檢圖 CHKD	年月日 DATE
0	- Preliminary drawing	KYG	LHJ	22. 12. 01	△				
1	6 RE-2-2092	KYJ	LHJ	22. 12. 27	△				
△					△				

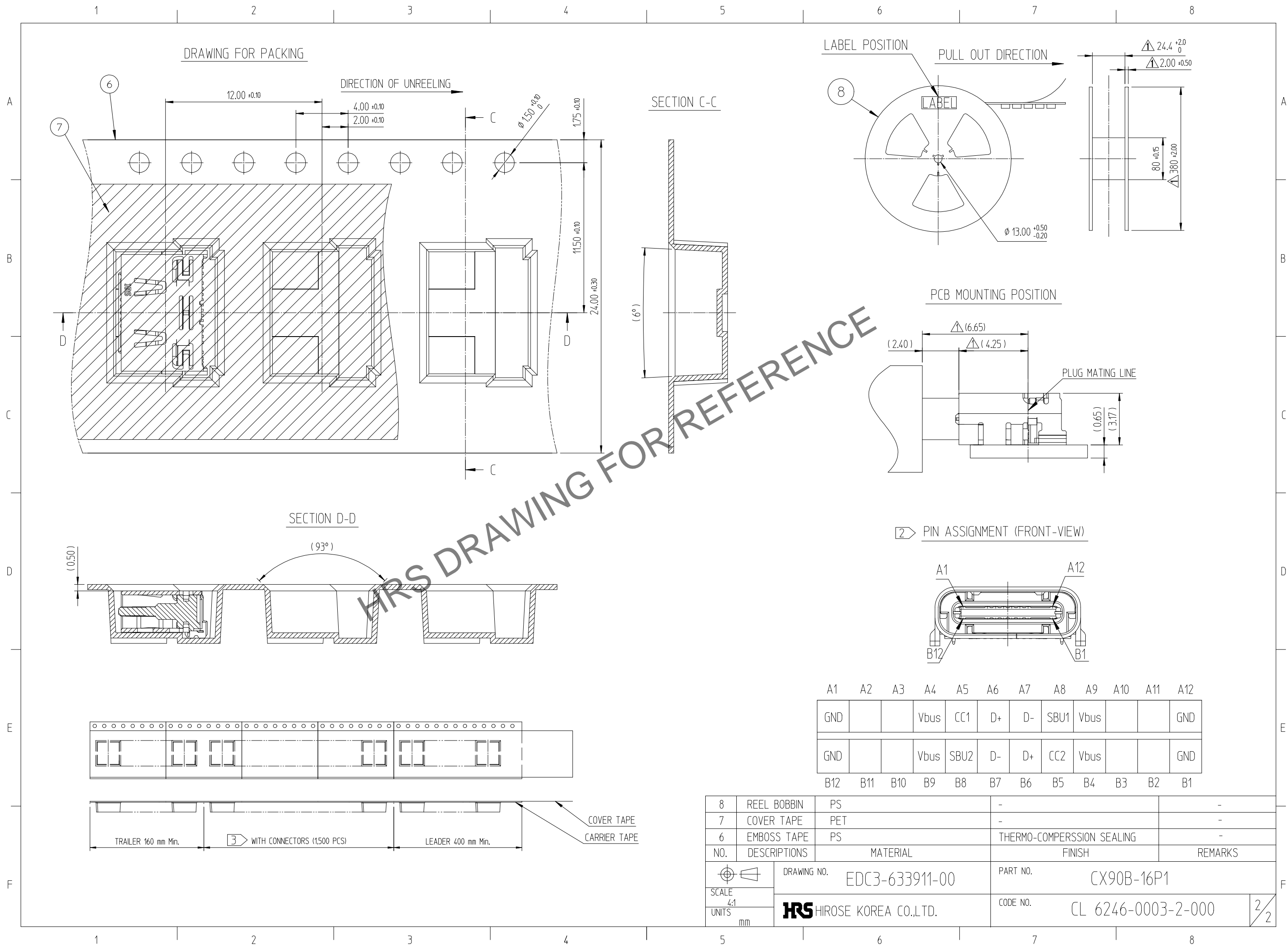


NOTE 1) LEAD CO-PLANARITY SHALL BE 0.08 MAX.
 2) PIN ASSIGNMENT
 3) PACKING QUANTITY : 1,500 PCS/REEL

NO.	DESCRIPTIONS	MATERIAL	FINISH	REMARKS
5	MAIN SHELL	STAINLESS STEEL	NICKEL PLATING	-
4	INSERT MOLD	THERMOPLASTIC	BLACK COLOR	UV94V-0
3	MID PLATE	STAINLESS STEEL	NICKEL PLATING	-
2	CONTACT 2ND	COPPER ALLOY	CONTACT AREA : GOLD OVER NICKEL PLATING LEAD AREA : GOLD OVER NICKEL PLATING	-
1	CONTACT 1ST	COPPER ALLOY	CONTACT AREA : GOLD OVER NICKEL PLATING LEAD AREA : GOLD OVER NICKEL PLATING	-

CODE NO. (OLD)		DRAWN	DESIGNED	CHECKED	APPROVED	RELEASED
		Y.G.KIM	Y.G.KIM	H.J.LEE	H.J.LEE	ENG 23.04.05 DEPT
DRAWING NO. EDC3-633911-00		PART NO. CX90B-16P1				
SCALE 5:1 UNITS mm		CODE NO. CL 6246-0003-2-000		1/2		

Jun.1.2024 Copyright 2024 HIROSE ELECTRIC CO., LTD. All Rights Reserved.
In case of consideration for using Automotive equipment / device which demand high reliability, kindly contact our sales window correspondents.



HRS DRAWING FOR REFERENCE

8	REEL BOBBIN	PS	-	-
7	COVER TAPE	PET	-	-
6	EMBOSS TAPE	PS	THERMO-COMPERSSION SEALING	-
NO.	DESCRIPTIONS	MATERIAL	FINISH	REMARKS
DRAWING NO.		EDC3-633911-00		PART NO.
SCALE		4:1		CL 6246-0003-2-000
UNITS		mm		2/2