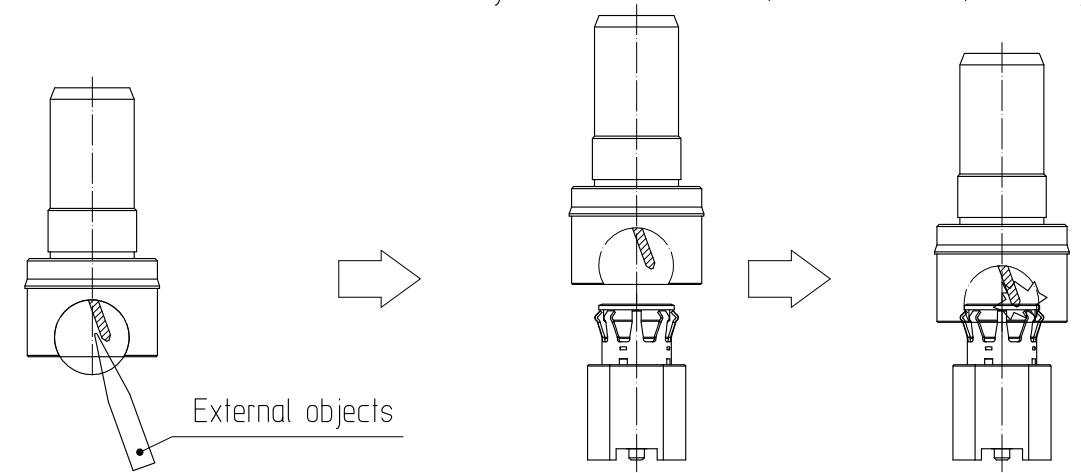


Jun.1.2024 Copyright 2024 HIROSE ELECTRIC CO., LTD. All Rights Reserved.
In case of consideration for using Automotive equipment / device which demand high reliability, kindly contact our sales window correspondents.

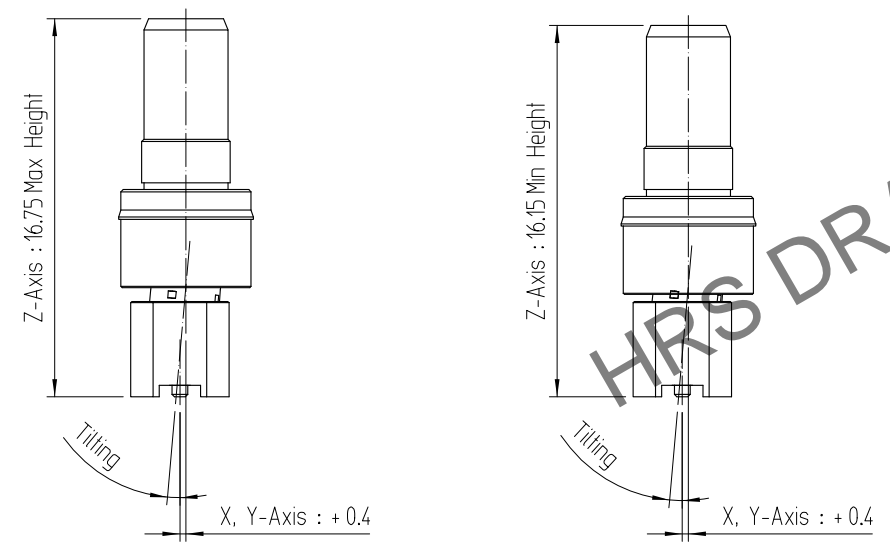
※ Handling Notice

POK22F-PR/A-SMT & POK22F-SMBP-1
(Scale : Free)

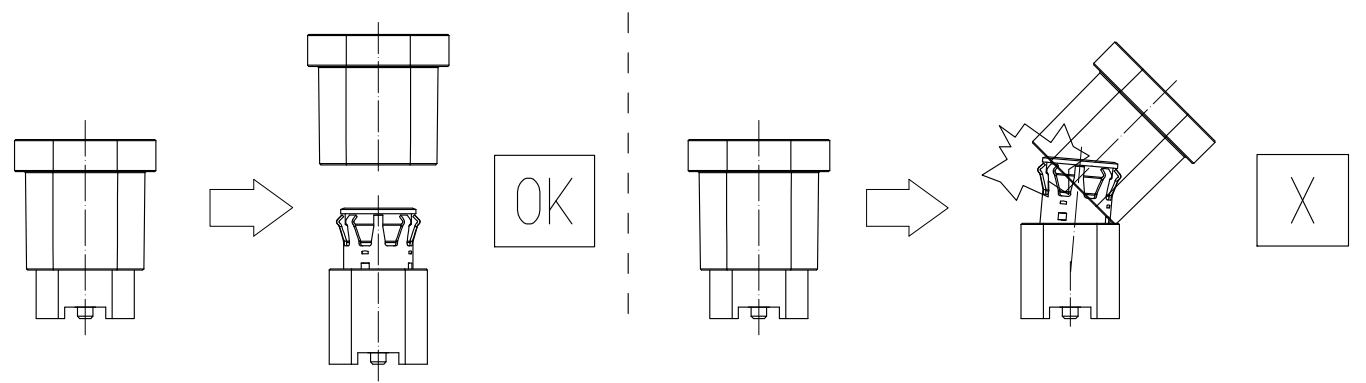
① Please be careful to avoid contact deformation due to external objects. Mating the connectors with deformed contacts may lead to malfunctions, contact failure, or damage to both parts.



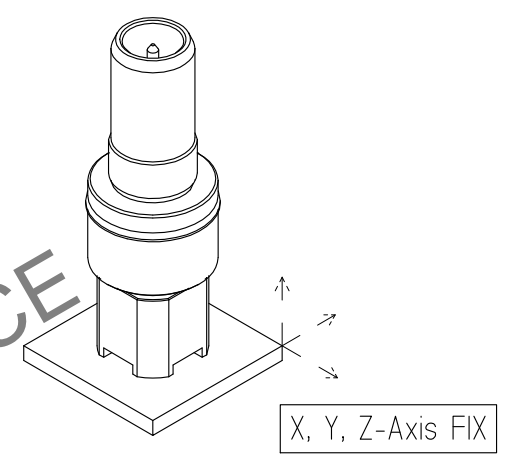
② The operating range for the POK22F is as follows. Using it beyond this range could cause damage.



③ To remove the cap from the receptacle, pull it straight out, perpendicular to the connector's mounted surface. Diagonal removal may cause the adapter (operating part) to tilt beyond its specified range, potentially damaging the product.

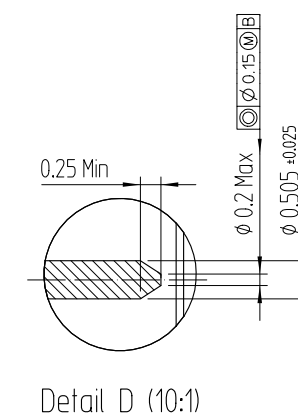
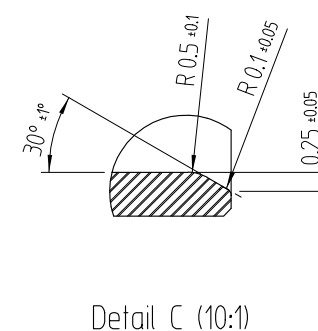
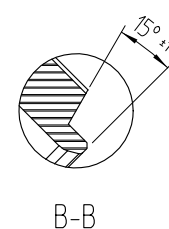
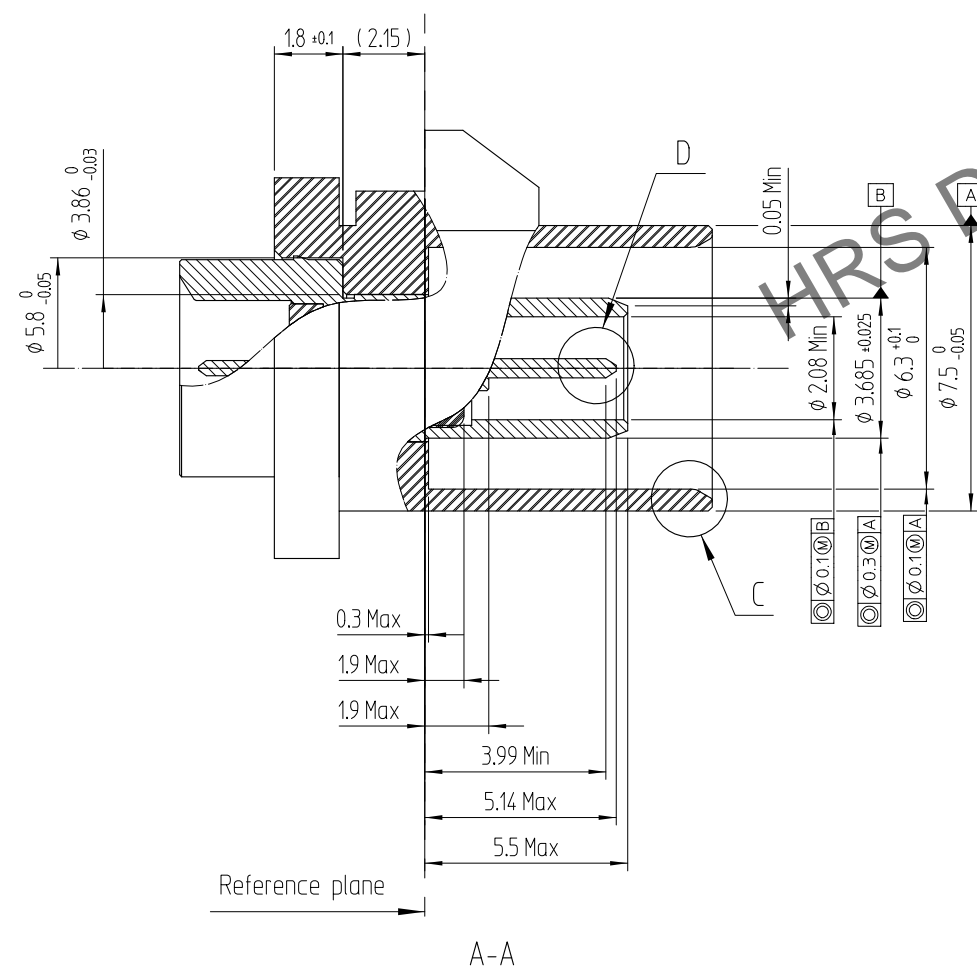
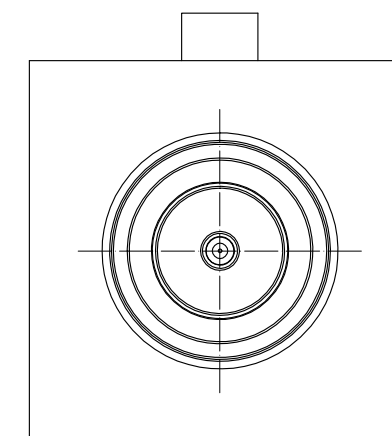
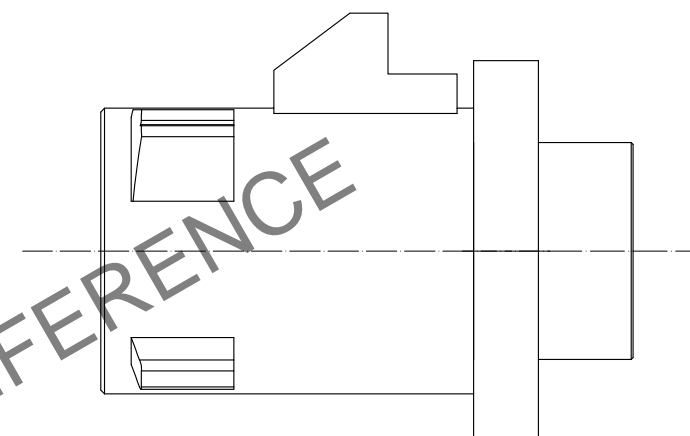
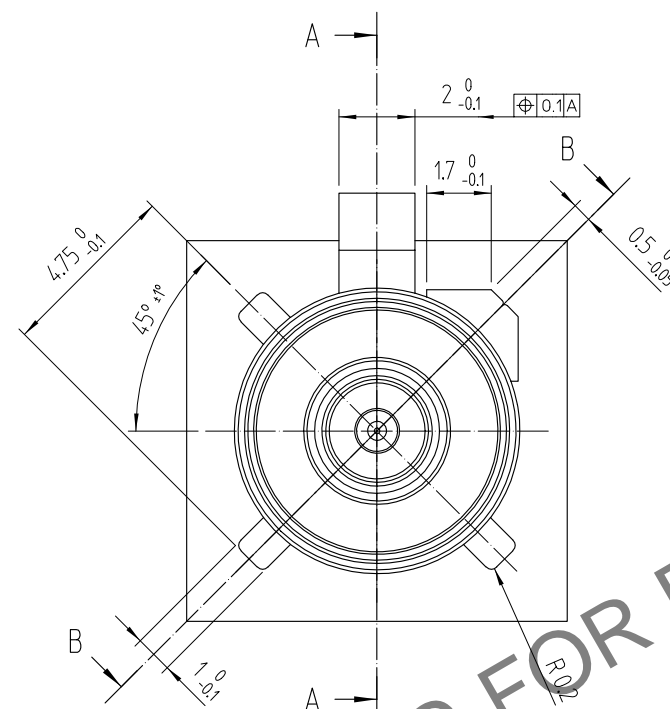
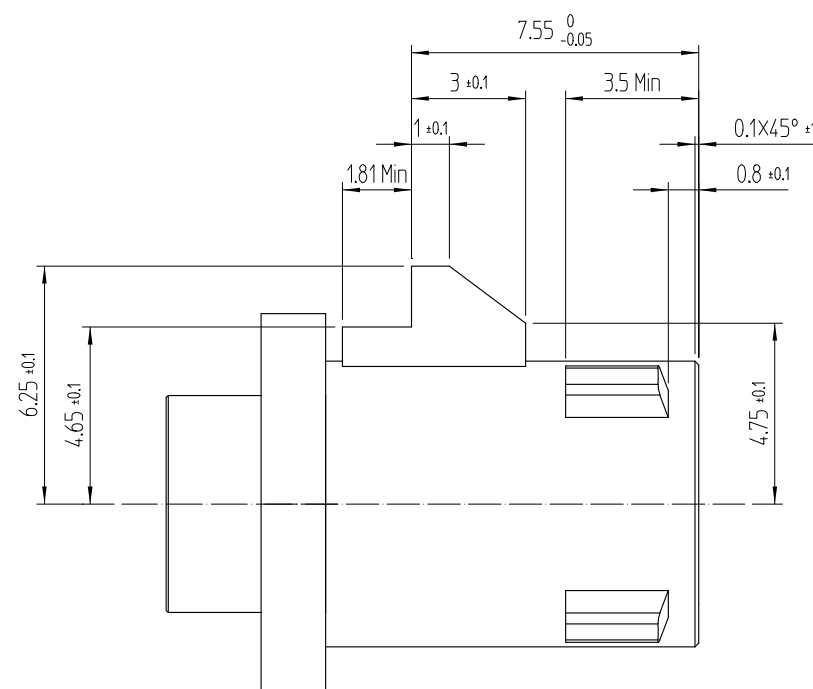
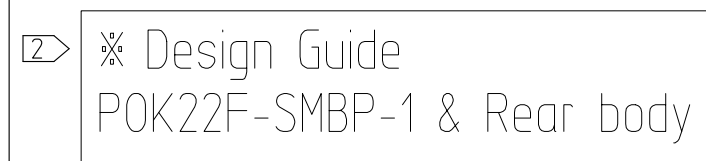




④ Using the product without securing the board may overload the connector, leading to damage or contact failure. Ensure the board is firmly secured to prevent movement.



	DRAWING NO.	PART NO.	
	EDC3-634151	POK22F-SMBP-1(800)	
	SCALE 5:1	CODE NO	
UNITS mm	HIROSE KOREA CO.,LTD.	CL 6301-4036-0-800	2/3

	△數 COUNT	訂正事項 DESCRIPTION OF REVISIONS	擔當 B Y	檢圖 CHKD	年 月 日 DATE		△數 COUNT	訂正事項 DESCRIPTION OF REVISIONS	擔當 B Y	檢圖 CHKD	年 月 日 DATE
△↑					. .	△					. .
△					. .	△					. .
△					. .	△					. .



	DRAWING NO. EDC3-634151		PART NO. POK22F-SMBP-1(800)	
SCALE 5:1	 HIROSE KOREA CO.,LTD.		CODE NO CL 6301-4036-0-800	<div>3</div> <div>3</div>
UNITS mm				