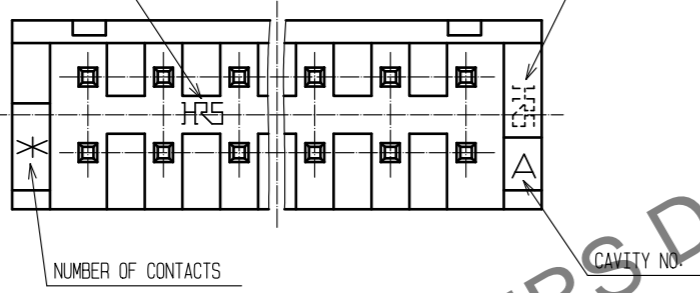
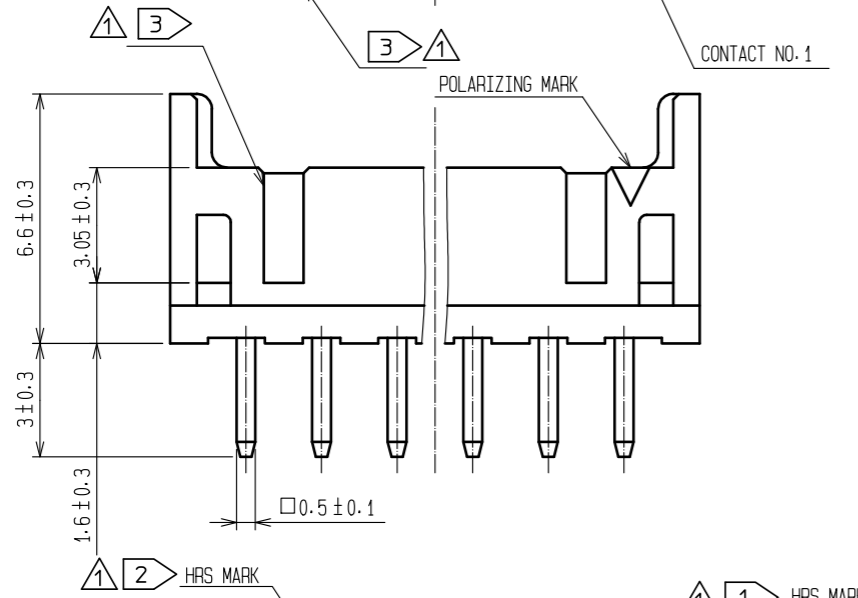
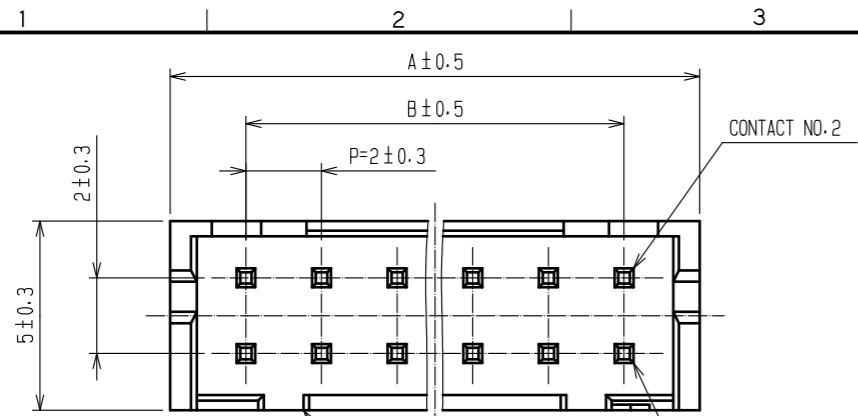
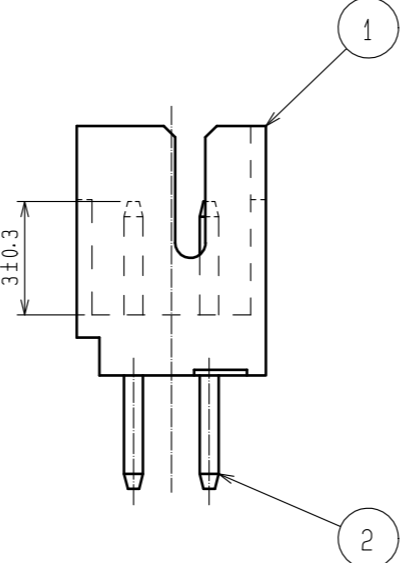
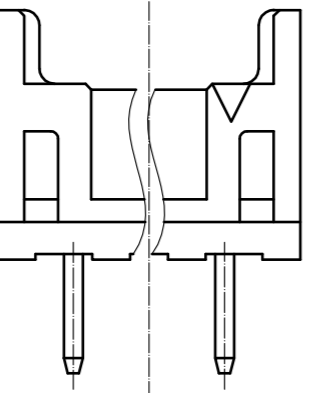


May.1.2024 Copyright 2024 HIROSE ELECTRIC CO., LTD. All Rights Reserved.
In case of consideration for using Automotive equipment / device which demand high reliability, kindly contact our sales window correspondents.

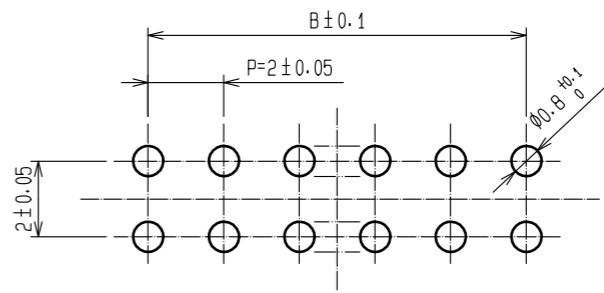


③ CONFIGURATION OF
DF11-4P/6P/8P-2DSA(08)



HRS NO	PART NO	NUMBER OF CONTACT	A	B
CL543-0517-5-24	DF11- 4DP-2DSA(24)	4	6.0	2.0
CL543-0518-8-24	DF11- 6DP-2DSA(24)	6	8.0	4.0
CL543-0519-0-24	DF11- 8DP-2DSA(24)	8	10.0	6.0
CL543-0520-0-24	DF11-10DP-2DSA(24)	10	12.0	8.0
CL543-0521-2-24	DF11-12DP-2DSA(24)	12	14.0	10.0
CL543-0522-5-24	DF11-14DP-2DSA(24)	14	16.0	12.0
CL543-0523-8-24	DF11-16DP-2DSA(24)	16	18.0	14.0
CL543-0524-0-24	DF11-18DP-2DSA(24)	18	20.0	16.0
CL543-0525-3-24	DF11-20DP-2DSA(24)	20	22.0	18.0
CL543-0526-6-24	DF11-22DP-2DSA(24)	22	24.0	20.0
CL543-0527-9-24	DF11-24DP-2DSA(24)	24	26.0	22.0
CL543-0528-1-24	DF11-26DP-2DSA(24)	26	28.0	24.0
CL543-0529-4-24	DF11-28DP-2DSA(24)	28	30.0	26.0
CL543-0530-3-24	DF11-30DP-2DSA(24)	30	32.0	28.0
CL543-0531-6-24	DF11-32DP-2DSA(24)	32	34.0	30.0

RECOMMENDED PATTERN



- ① NOTES ① : HRS MARK OF 4 OR 6 CONTACTS ARE INDICATED IN APPROXIMAL POSITION SHOWN.
 ② : IF MORE THAN 8 CONTACTS, HRS MARK ARE INDICATED IN APPROXIMAL POSITION SHOWN.
 ③ : FOR 4, 6 AND 8 CONTACTS, ONE MIS-INSERTION DEPRESSION SHALL BE MADE, FOR OTHERS, 2 MIS-INSERTION DEPRESSION AS PER DRAWING.

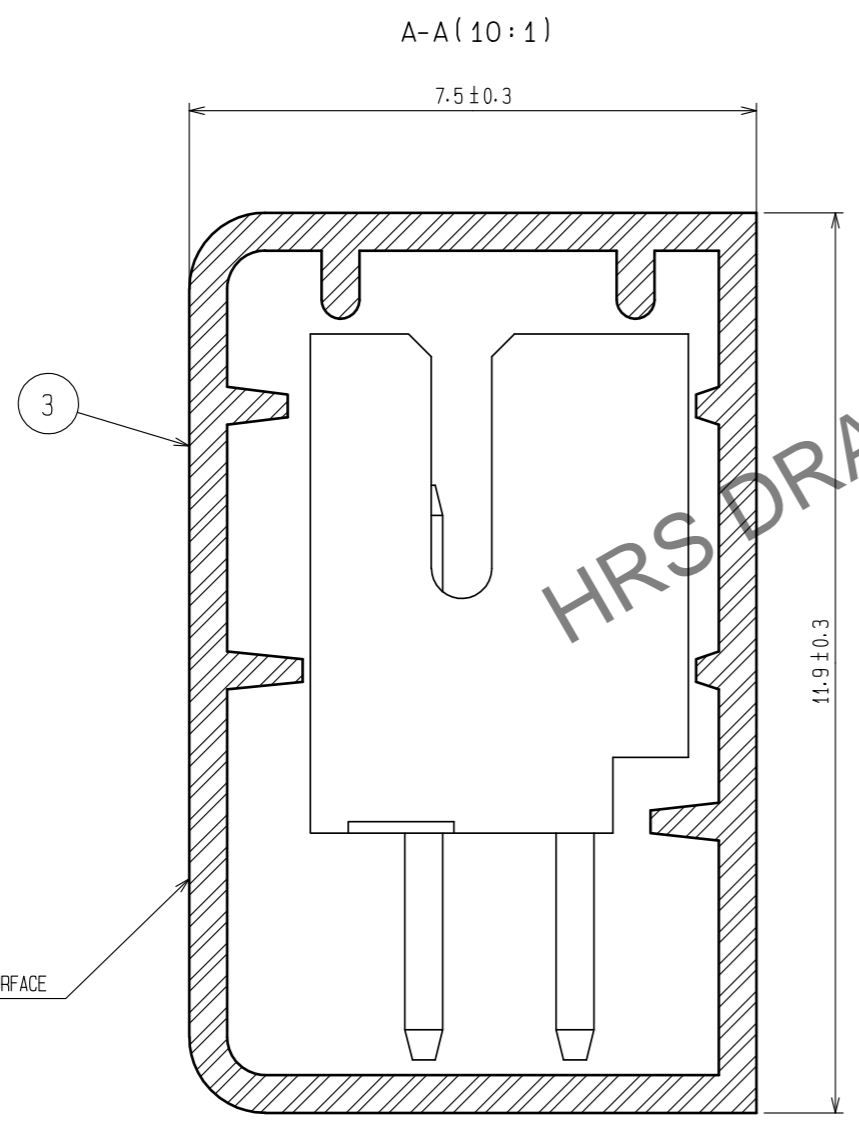
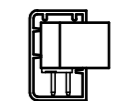
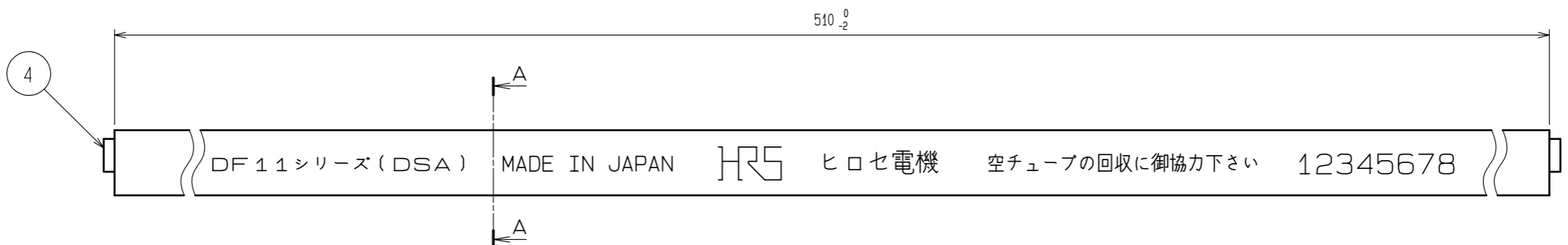
NO.	MATERIAL	FINISH . REMARKS	NO.	MATERIAL	FINISH . REMARKS
2	BRASS	SURFACE:TIN PLATED 1#m min UNDER PLATING::NICKEL PLATED 0.5#m min	4	S. PVC	STOPPER. GRAY
1	POLYAMIDE	BLACK. UL94V-0	3	R. PVC	ELECTROSTATIC PROTECTION(CLEAR)

UNITS	SCALE	COUNT	DESCRIPTION OF REVISIONS	DESIGNED	CHECKED	DATE
mm	5 : 1	6	DIS-H-00019607	KI. SUGAWARA	SZ. ONO	20231208

APPROVED	CHECKED	DESIGNED	DRAWN	NO.	NO.	NO.	NO.
TY. OMA	HK. UMEHARA	IO. DENPOUYA	MK. MATSUO	20050811	20050811	20050811	20050801

DRAWING NO.	PART NO.	CODE NO.
EDC-162391-24-03	DF11- *DP-2DSA(24)	CL543-

May.1.2024 Copyright 2024 HIROSE ELECTRIC CO., LTD. All Rights Reserved.
 In case of consideration for using Automotive equipment / device which demand high reliability, kindly contact our sales window correspondents.



CODE No.	PART No.	NUMBER OF CONTACTS	QUANTITY OF CONNECTOR
CL543-0517-5-24	DF11- 4DP-2DSA(24)	4	81
CL543-0518-8-24	DF11- 6DP-2DSA(24)	6	61
CL543-0519-0-24	DF11- 8DP-2DSA(24)	8	48
CL543-0520-0-24	DF11-10DP-2DSA(24)	10	40
CL543-0521-2-24	DF11-12DP-2DSA(24)	12	34
CL543-0522-5-24	DF11-14DP-2DSA(24)	14	30
CL543-0523-8-24	DF11-16DP-2DSA(24)	16	27
CL543-0524-0-24	DF11-18DP-2DSA(24)	18	24
CL543-0525-3-24	DF11-20DP-2DSA(24)	20	22
CL543-0526-6-24	DF11-22DP-2DSA(24)	22	20
CL543-0527-9-24	DF11-24DP-2DSA(24)	24	18
CL543-0528-1-24	DF11-26DP-2DSA(24)	26	17
CL543-0529-4-24	DF11-28DP-2DSA(24)	28	16
CL543-0530-3-24	DF11-30DP-2DSA(24)	30	15
CL543-0531-6-24	DF11-32DP-2DSA(24)	32	14

NOTES 4 : THE NUMBER OF CONNECTORS PER MAGAZINE CASE IS SHOWN IN THE TABLE BELOW.
 5 : MINIMUM UNIT OF PURCHASE SHALL BE THE QUANTITY OF CONNECTORS IN TUBE.

HRS	DRAWING NO.	EDC-162391-24-03
	PART NO.	DF11-*DP-2DSA(24)
	CODE NO.	CL543-