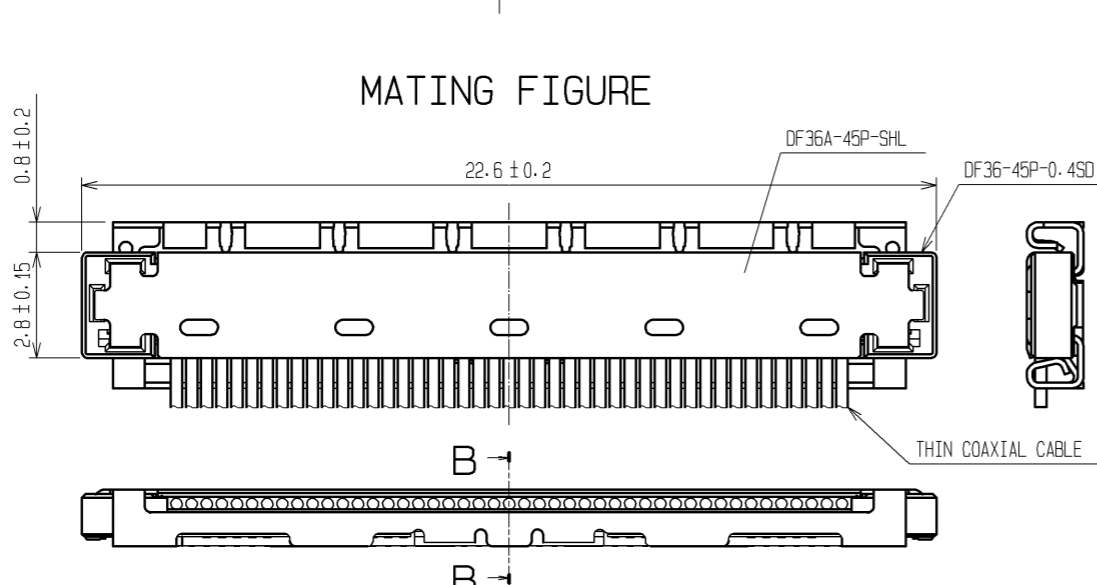
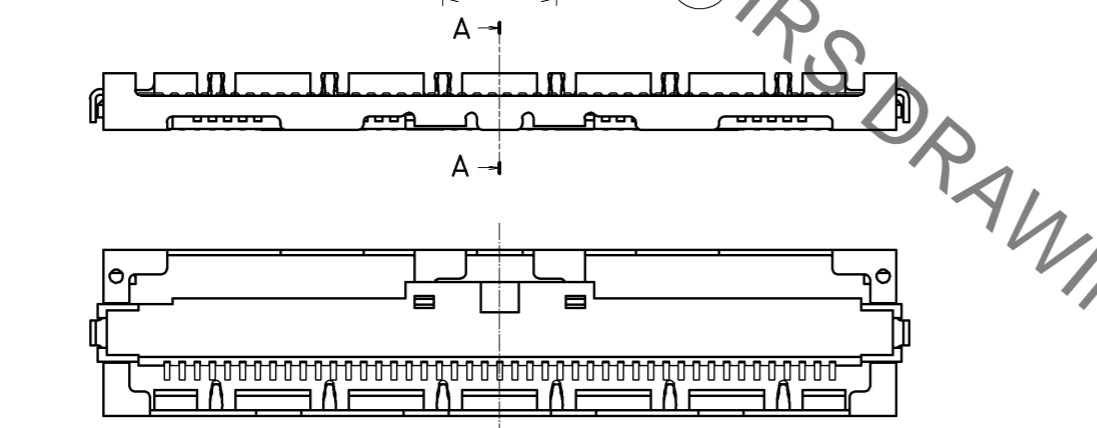
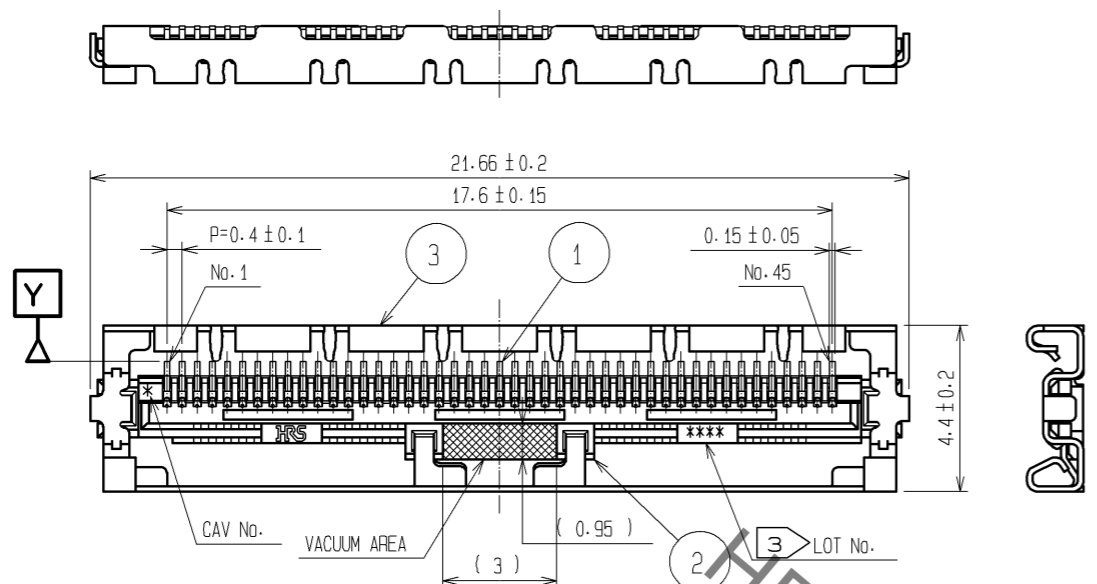
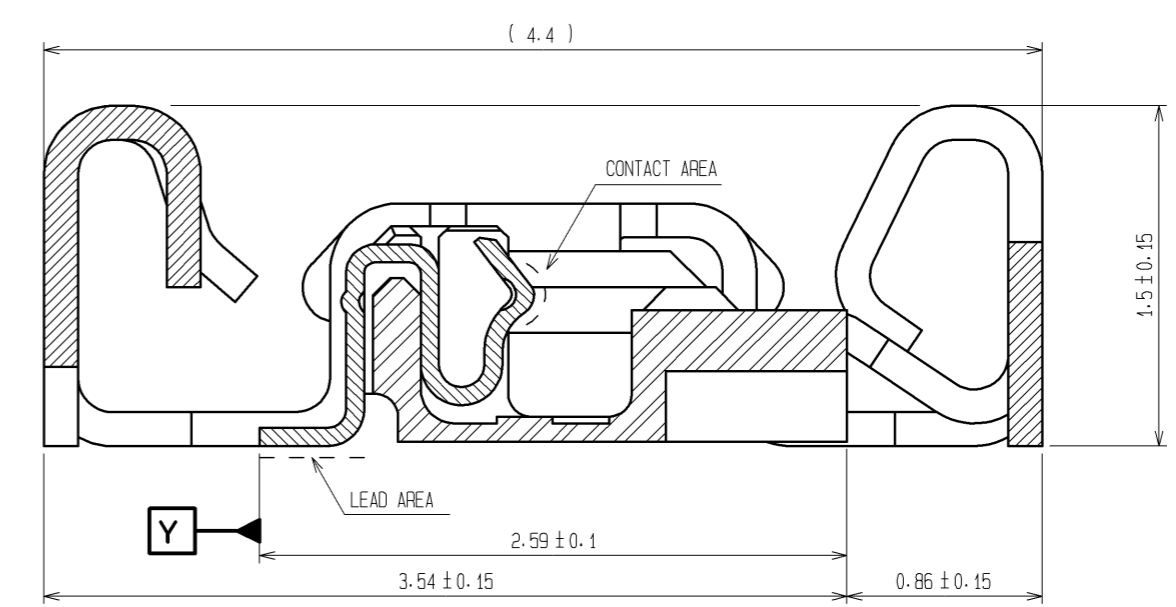


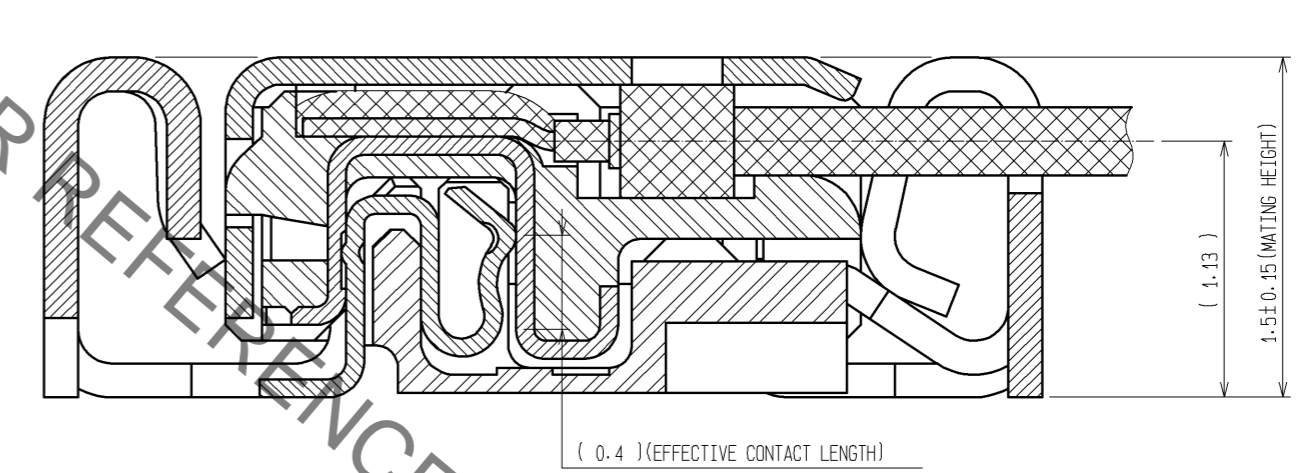
Dec.1.2022 Copyright 2022 HIROSE ELECTRIC CO., LTD. All Rights Reserved.
 In case of consideration for using Automotive equipment / device which demand high reliability, kindly contact our sales window correspondents.



A-A (30:1) △



B-B (30:1) △



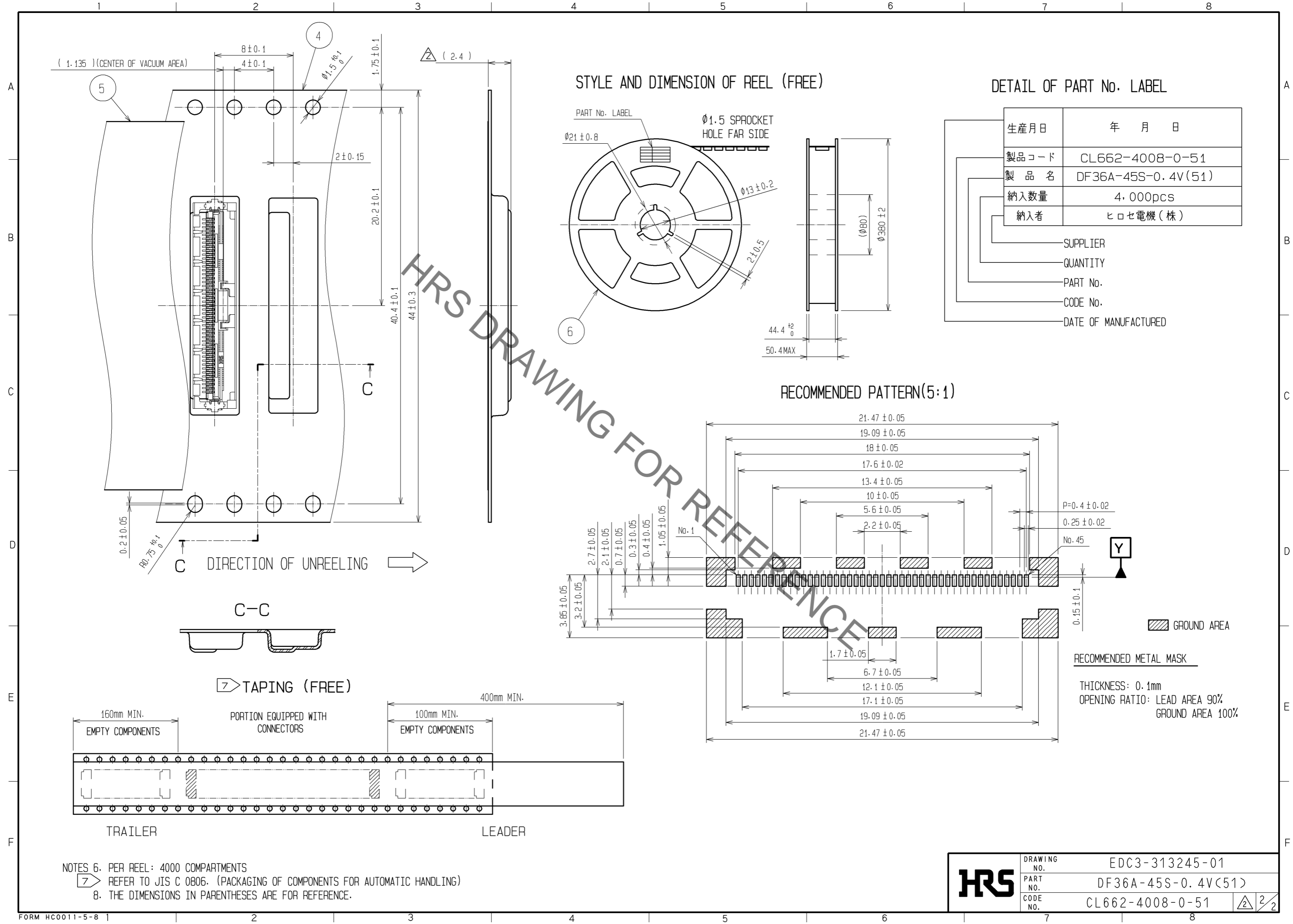
NOTES

- LEAD CO-PLANARITY SHALL BE 0.1mm MAX.
- STIFFENER IS REQUIRED FOR MOUNTING ONTO FPC IN ORDER TO AVOID STRESS BY FPC SLACKING TO MOUNTED CONNECTOR.
- LOT No. INFORMATION IS SHOWN IN THE TABLE.
EXAMPLE:BGFD
-YEAR:2008 MONTH:July DAY:15 LINE No.:4
- UNMATING SHALL BE DONE WITH THE SPECIFIC EXTRACTION TOOL.
- SOLDERING REWORK IS NOT POSSIBLE SINCE SOLDERING LEADS ARE COVERED BY METAL SHIELDING.

| YEAR | | MONTH | | DAY | | | | | | LINE No. | |
|------|------|-------|------|-----|------|-----|------|-----|------|----------|------|
| YEAR | CODE | MONTH | CODE | DAY | CODE | DAY | CODE | DAY | CODE | LINE No. | CODE |
| 10 | 0 | Jan | A | 1 | 1 | 11 | B | 21 | M | 1 | A |
| 11 | 1 | Feb | B | 2 | 2 | 12 | C | 22 | N | 2 | B |
| 12 | 2 | Mar | C | 3 | 3 | 13 | D | 23 | P | 3 | C |
| 13 | 3 | Apr | D | 4 | 4 | 14 | E | 24 | Q | 4 | D |
| 14 | 4 | May | E | 5 | 5 | 15 | F | 25 | R | 5 | E |
| 15 | 5 | Jun | F | 6 | 6 | 16 | G | 26 | S | 6 | F |
| 16 | 6 | Jul | G | 7 | 7 | 17 | H | 27 | T | 7 | G |
| 17 | 7 | Aug | H | 8 | 8 | 18 | J | 28 | U | 8 | H |
| 08 | 8 | Sep | I | 9 | 9 | 19 | K | 29 | V | 9 | I |
| 09 | 9 | Oct | J | 10 | A | 20 | L | 30 | W | 10 | J |
| | | Nov | K | | | | | 31 | X | | |
| | | Dec | L | | | | | | | | |

| 2 | LCP | UL94V-0 | 6 | PS | BLACK |
|--------------------------|-----------------|---|----------|-----------------------------|---|
| 1 | PHOSPHOR BRONZE | CONTACT AREA : Au PLATING 0.3µm min LEAD AREA : Au PLATING 0.1µm min | 5 | POLYESTER | CLEAR |
| | | | 4 | PS | CLEAR |
| | | | 3 | PHOSPHOR BRONZE | WHOLE AREA : Sn PLATING 1µm min UNDER PLATING : Cu PLATING 0.2µm min |
| NO. | MATERIAL | FINISH . REMARKS | NO. | MATERIAL | FINISH . REMARKS |
| UNITS | mm | SCALE | 5 : 1 | COUNT | 3 |
| DESCRIPTION OF REVISIONS | | | DESIGNED | SI. ISHII | CHECKED |
| DIS-H-002943 | | | DATE | 08.06.04 | |
| APPROVED : TY. OMA | | | 06.12.18 | DRAWING NO. EDC3-313245-01 | |
| CHECKED : TS. SAKATA | | | 06.12.17 | PART NO. DF36A-45S-0.4V(51) | |
| DESIGNED : MN. KENJO | | | 06.12.15 | CODE NO. CL662-4008-0-51 | |
| DRAWN : MN. KENJO | | | 06.12.15 | | |

Dec.1.2022 Copyright 2022 HIROSE ELECTRIC CO., LTD. All Rights Reserved.
 In case of consideration for using Automotive equipment / device which demand high reliability, kindly contact our sales window correspondents.



NOTES 6. PER REEL: 4000 COMPARTMENTS
 7. REFER TO JIS C 0806. (PACKAGING OF COMPONENTS FOR AUTOMATIC HANDLING)
 8. THE DIMENSIONS IN PARENTHESES ARE FOR REFERENCE.

| | | |
|------------|-------------|--------------------|
| HRS | DRAWING NO. | EDC3-313245-01 |
| | PART NO. | DF36A-45S-0.4V(51) |
| | CODE NO. | CL662-4008-0-51 |
| | | \triangle 2/2 |