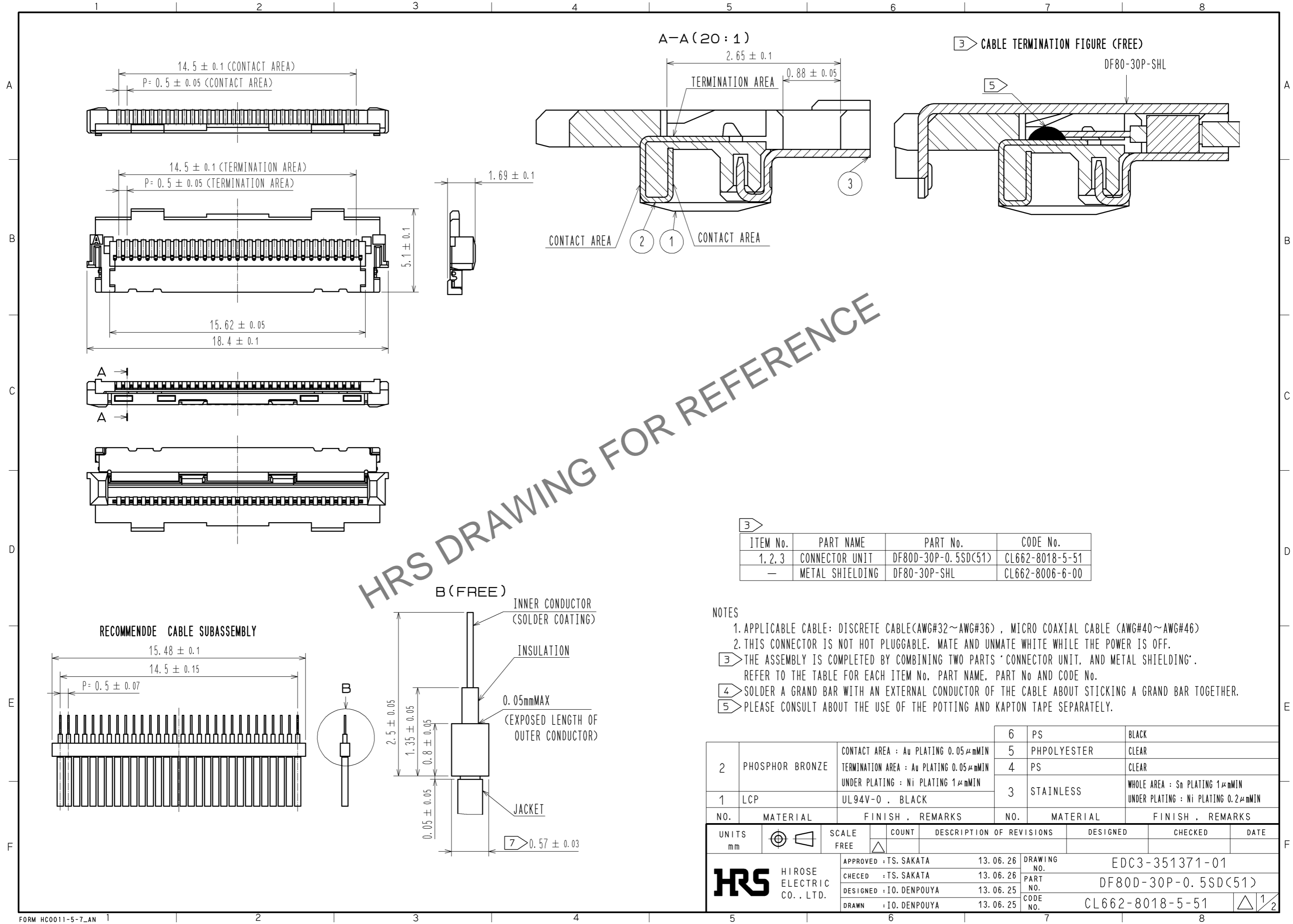


Mar.1.2024 Copyright 2024 HIROSE ELECTRIC CO., LTD. All Rights Reserved.
In case of consideration for using Automotive equipment / device which demand high reliability, kindly contact our sales window correspondents.



HRS DRAWING FOR REFERENCE

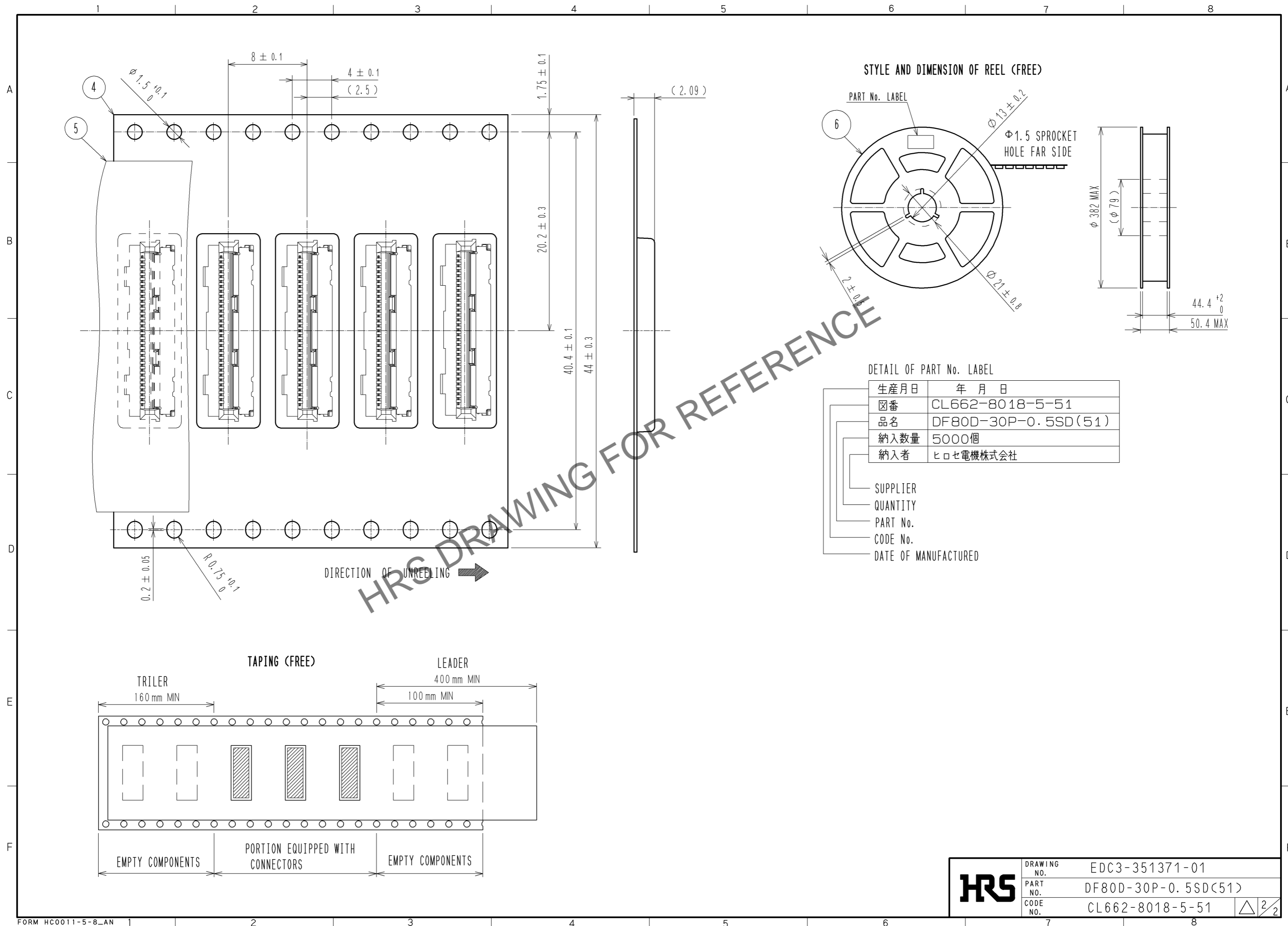
| ITEM No. | PART NAME | PART No. | CODE No. |
|----------|-----------------|---------------------|-----------------|
| 1, 2, 3 | CONNECTOR UNIT | DF80D-30P-0.5SD(51) | CL662-8018-5-51 |
| - | METAL SHIELDING | DF80-30P-SHL | CL662-8006-6-00 |

- NOTES**
1. APPLICABLE CABLE: DISCRETE CABLE(AWG#32~AWG#36), MICRO COAXIAL CABLE (AWG#40~AWG#46)
 2. THIS CONNECTOR IS NOT HOT PLUGGABLE. MATE AND UNMATE WHILE THE POWER IS OFF.
 3. THE ASSEMBLY IS COMPLETED BY COMBINING TWO PARTS 'CONNECTOR UNIT, AND METAL SHIELDING'. REFER TO THE TABLE FOR EACH ITEM No., PART NAME, PART No AND CODE No.
 4. SOLDER A GRAND BAR WITH AN EXTERNAL CONDUCTOR OF THE CABLE ABOUT STICKING A GRAND BAR TOGETHER.
 5. PLEASE CONSULT ABOUT THE USE OF THE POTTING AND KAPTON TAPE SEPARATELY.

| NO. | MATERIAL | FINISH . REMARKS | NO. | MATERIAL | FINISH . REMARKS |
|-----|-----------------|---|-----|-------------|---|
| 2 | PHOSPHOR BRONZE | CONTACT AREA : Au PLATING 0.05μmMIN TERMINATION AREA : Au PLATING 0.05μmMIN UNDER PLATING : Ni PLATING 1μmMIN | 6 | PS | BLACK |
| 1 | LCP | UL94V-0 . BLACK | 5 | PHPOLYESTER | CLEAR |
| | | | 4 | PS | CLEAR |
| | | | 3 | STAINLESS | WHOLE AREA : Sn PLATING 1μmMIN UNDER PLATING : Ni PLATING 0.2μmMIN |

| UNITS | SCALE | COUNT | DESCRIPTION OF REVISIONS | DESIGNED | CHECKED | DATE |
|-------------------------|-------|-------|--------------------------|------------------------------|---------|------|
| mm | FREE | △ | | | | |
| APPROVED : TS. SAKATA | | | 13.06.26 | DRAWING NO. EDC3-351371-01 | | |
| CHECKED : TS. SAKATA | | | 13.06.26 | PART NO. DF80D-30P-0.5SD(51) | | |
| DESIGNED : IO. DENPOUYA | | | 13.06.25 | CODE NO. CL662-8018-5-51 | | |
| DRAWN : IO. DENPOUYA | | | 13.06.25 | △ 1/2 | | |

Mar.1.2024 Copyright 2024 HIROSE ELECTRIC CO., LTD. All Rights Reserved.
 In case of consideration for using Automotive equipment / device which demand high reliability, kindly contact our sales window correspondents.



| | | |
|------------|-------------|---------------------|
| HRS | DRAWING NO. | EDC3-351371-01 |
| | PART NO. | DF80D-30P-0.5SD(51) |
| | CODE NO. | CL662-8018-5-51 |
| | | △ 2/2 |