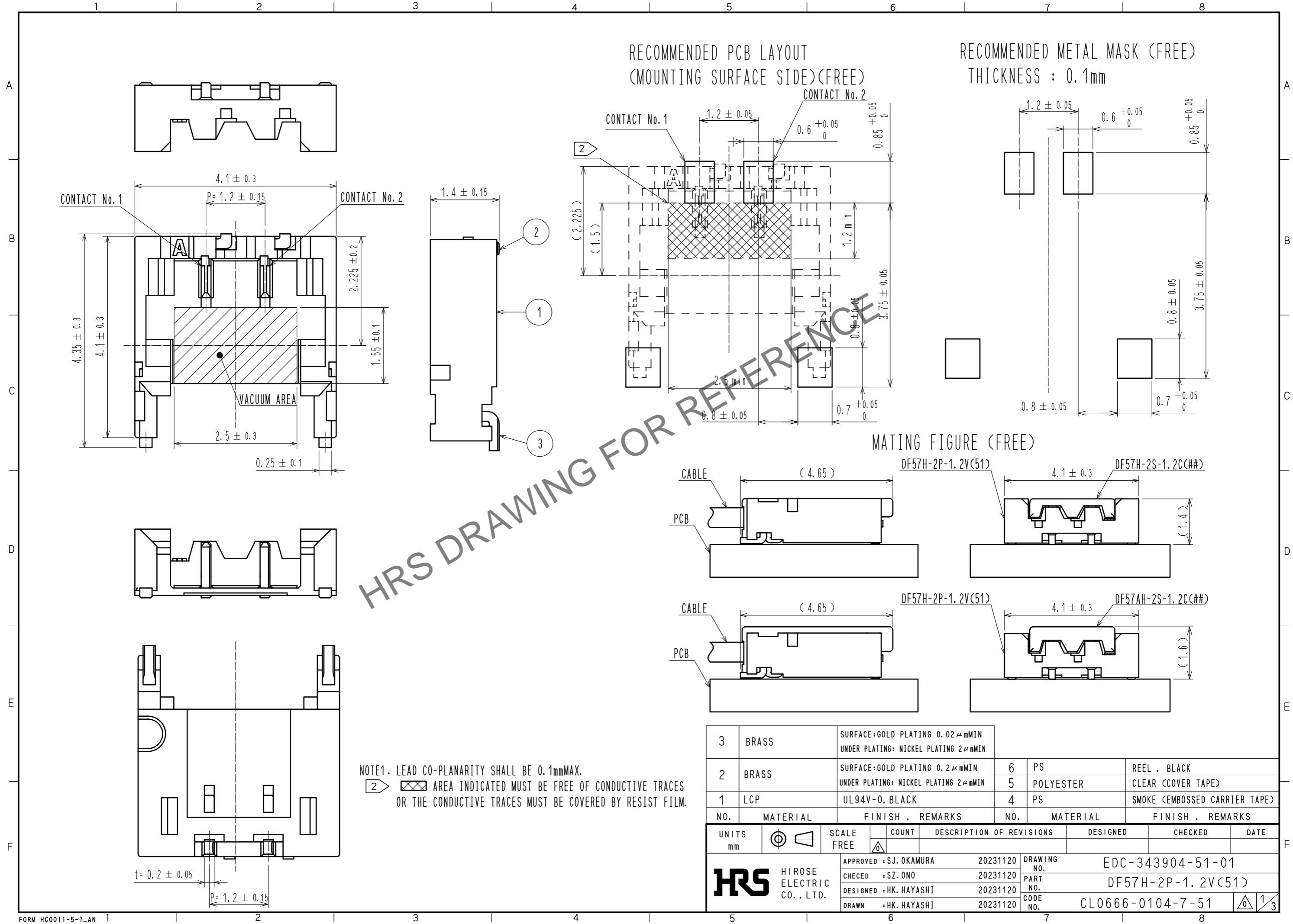


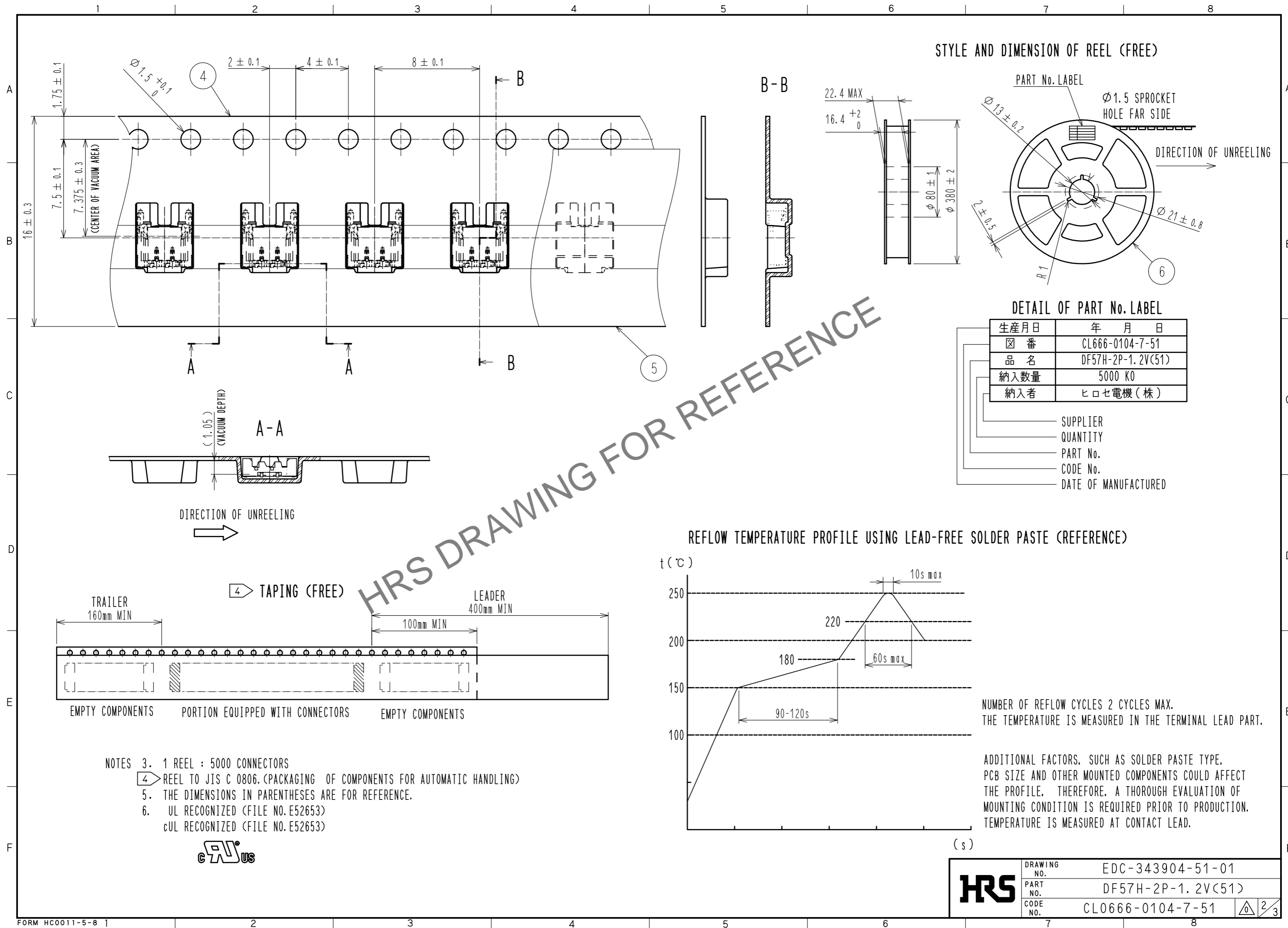
Jul.1.2024 Copyright 2024 HIROSE ELECTRIC CO., LTD. All Rights Reserved.  
 In case of consideration for using Automotive equipment / device which demand high reliability, kindly contact our sales window correspondents.



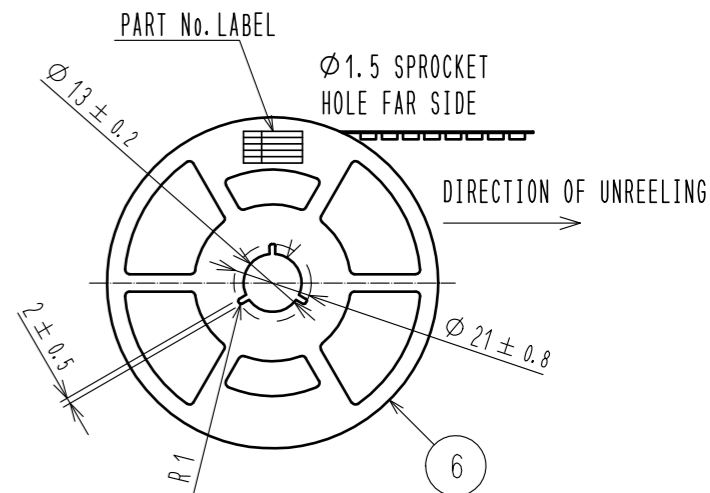
NOTE1. LEAD CO-PLANARITY SHALL BE 0.1mmMAX.  
 2 AREA INDICATED MUST BE FREE OF CONDUCTIVE TRACES OR THE CONDUCTIVE TRACES MUST BE COVERED BY RESIST FILM.

3	BRASS	SURFACE:GOLD PLATING 0.02μmMIN UNDER PLATING: NICKEL PLATING 2μmMIN	6	PS	REEL . BLACK
2	BRASS	SURFACE:GOLD PLATING 0.2μmMIN UNDER PLATING: NICKEL PLATING 2μmMIN	5	POLYESTER	CLEAR (COVER TAPE)
1	LCP	UL94V-0, BLACK	4	PS	SMOKE (EMBOSSED CARRIER TAPE)
NO.	MATERIAL	FINISH . REMARKS	NO.	MATERIAL	FINISH . REMARKS
UNITS mm		SCALE FREE	COUNT	DESCRIPTION OF REVISIONS	
		APPROVED : SJ. OKAMURA	20231120	DRAWING NO. EDC-343904-51-01	
HIROSE ELECTRIC CO., LTD.		CHECED : SZ. ONO	20231120	PART NO. DF57H-2P-1.2V(51)	
		DESIGNED : HK. HAYASHI	20231120	CODE NO. CL0666-0104-7-51	
		DRAWN : HK. HAYASHI	20231120	1/3	

Jul.1.2024 Copyright 2024 HIROSE ELECTRIC CO., LTD. All Rights Reserved.  
 In case of consideration for using Automotive equipment / device which demand high reliability, kindly contact our sales window correspondents.



STYLE AND DIMENSION OF REEL (FREE)

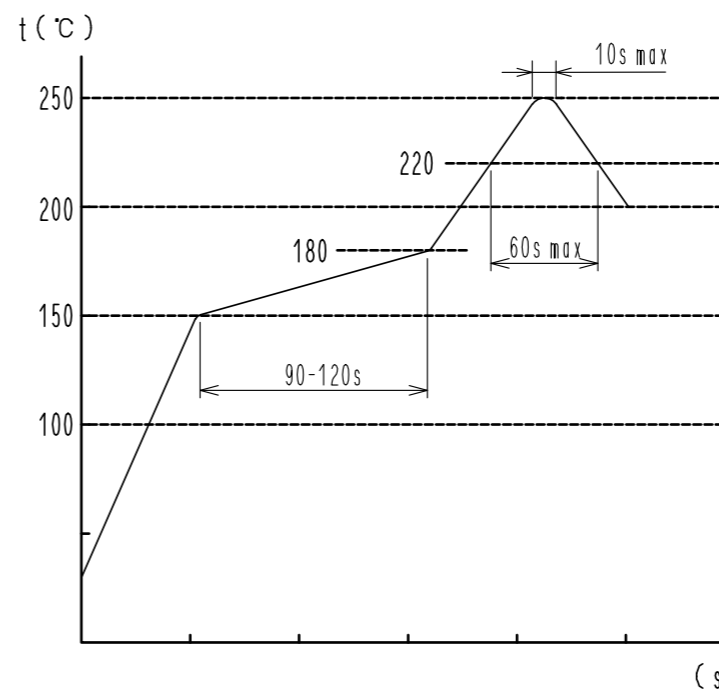


DETAIL OF PART No. LABEL

生産月日	年 月 日
図 番	CL666-0104-7-51
品 名	DF57H-2P-1.2V(51)
納入数量	5000 KO
納入者	ヒロセ電機(株)

— SUPPLIER  
 — QUANTITY  
 — PART No.  
 — CODE No.  
 — DATE OF MANUFACTURED

REFLOW TEMPERATURE PROFILE USING LEAD-FREE SOLDER PASTE (REFERENCE)



NUMBER OF REFLOW CYCLES 2 CYCLES MAX.  
 THE TEMPERATURE IS MEASURED IN THE TERMINAL LEAD PART.

ADDITIONAL FACTORS, SUCH AS SOLDER PASTE TYPE,  
 PCB SIZE AND OTHER MOUNTED COMPONENTS COULD AFFECT  
 THE PROFILE. THEREFORE, A THOROUGH EVALUATION OF  
 MOUNTING CONDITION IS REQUIRED PRIOR TO PRODUCTION.  
 TEMPERATURE IS MEASURED AT CONTACT LEAD.

- NOTES
- 1 REEL : 5000 CONNECTORS
  - REEL TO JIS C 0806. (PACKAGING OF COMPONENTS FOR AUTOMATIC HANDLING)
  - THE DIMENSIONS IN PARENTHESES ARE FOR REFERENCE.
  - UL RECOGNIZED (FILE NO. E52653)  
 cUL RECOGNIZED (FILE NO. E52653)

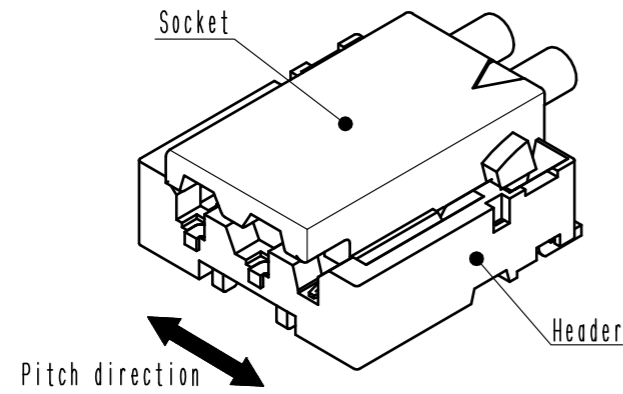


<b>HRS</b>	DRAWING NO.	EDC-343904-51-01
	PART NO.	DF57H-2P-1.2V(51)
	CODE NO.	CL0666-0104-7-51
		2/3

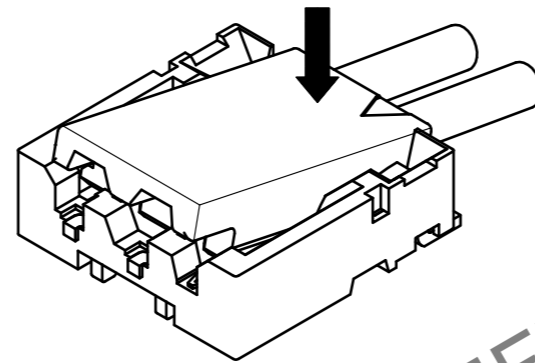
# DF57 Series Mating / Unmating Operation Instruction

## Mating

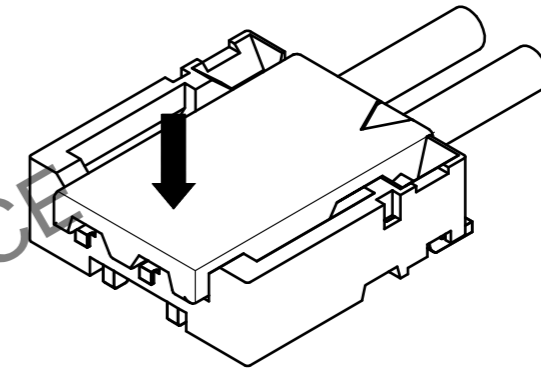
① By positioning the convexity of the socket sides to the header concavity, align the centers of the socket and the header in pitch direction.



② Slightly press the socket down at cable side to tilted angle.

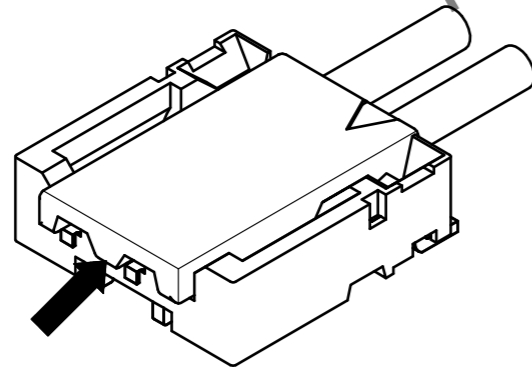


③ Press down at the lever side with stabilizing the cable side to insert. Mating completes.

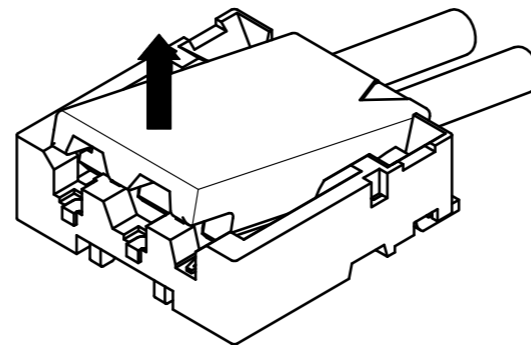


## Unmating

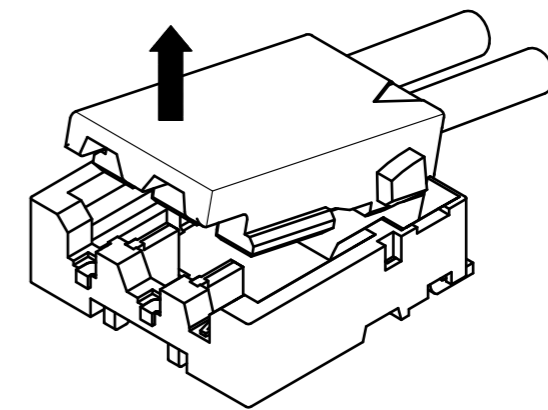
① Hook the lever with finger nail.



② Lift up to the upper direction and friction lock is released.



③ Lift up to the upper direction and positive lock is released. Removal completes.



HRS DRAWING FOR REFERENCE

<b>HRS</b>	DRAWING NO.	EDC-343904-51-01
	PART NO.	DF57H-2P-1.2V(51)
	CODE NO.	CL0666-0104-7-51
		3/3

In case of consideration for using Automotive equipment / device which demand high reliability, kindly contact our sales window correspondents.