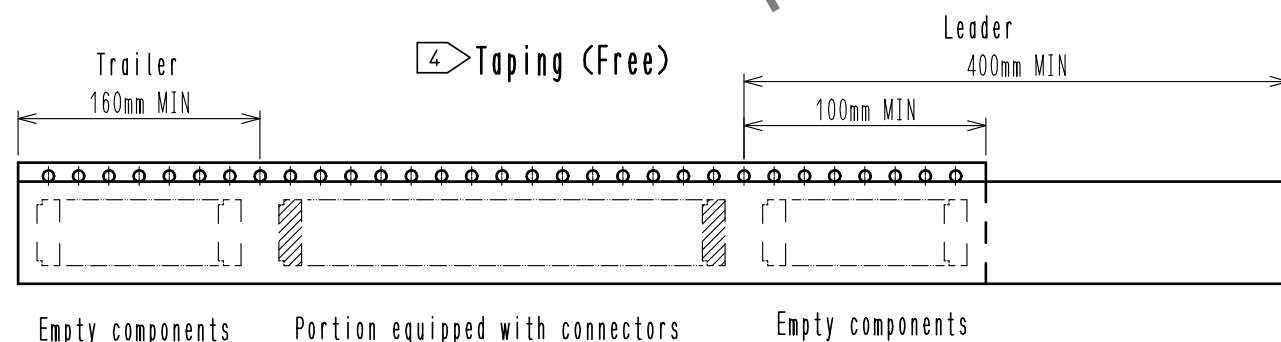
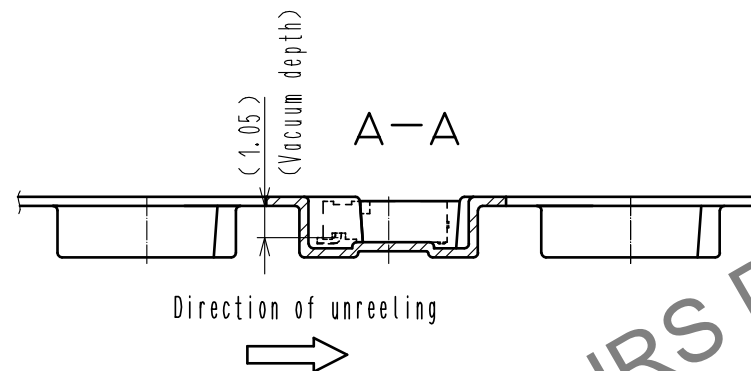
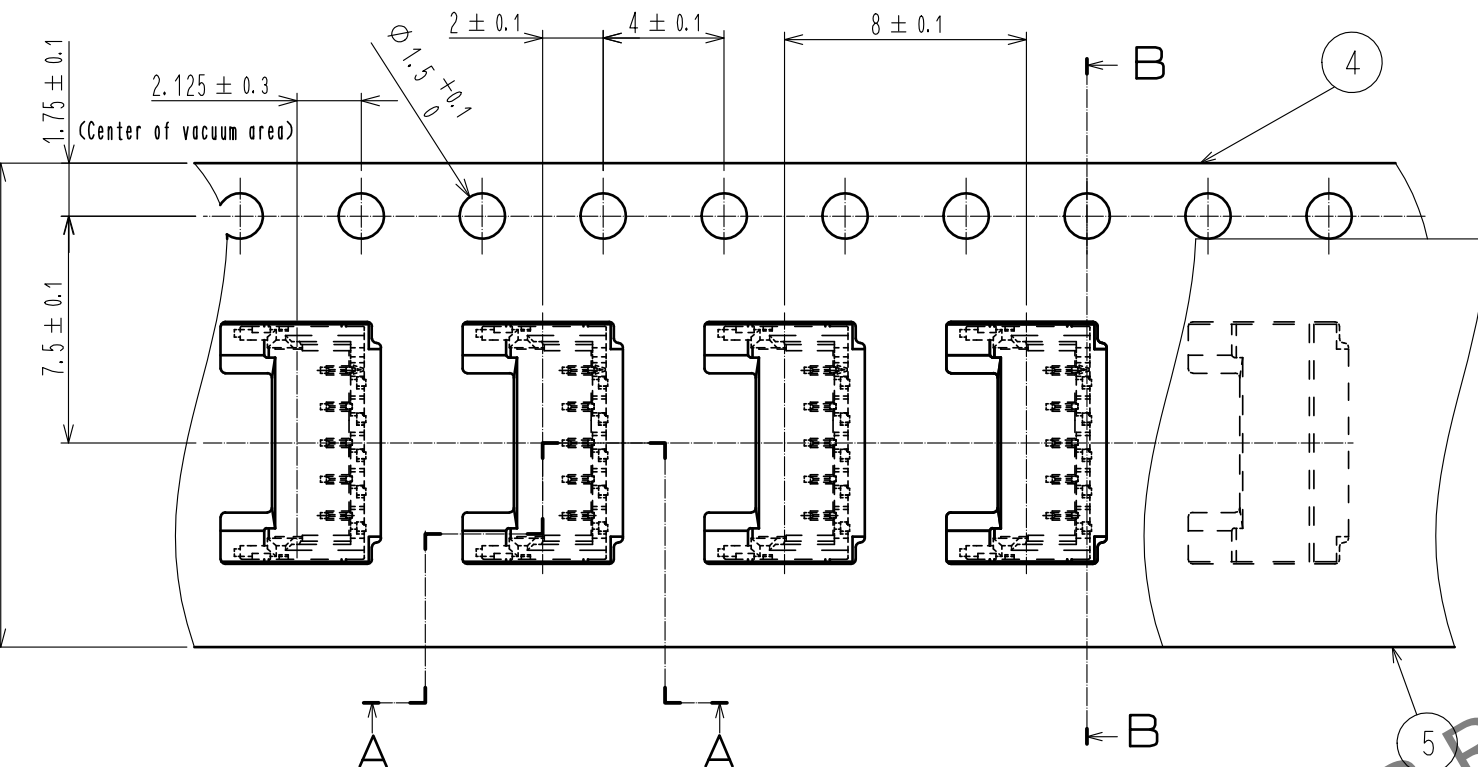
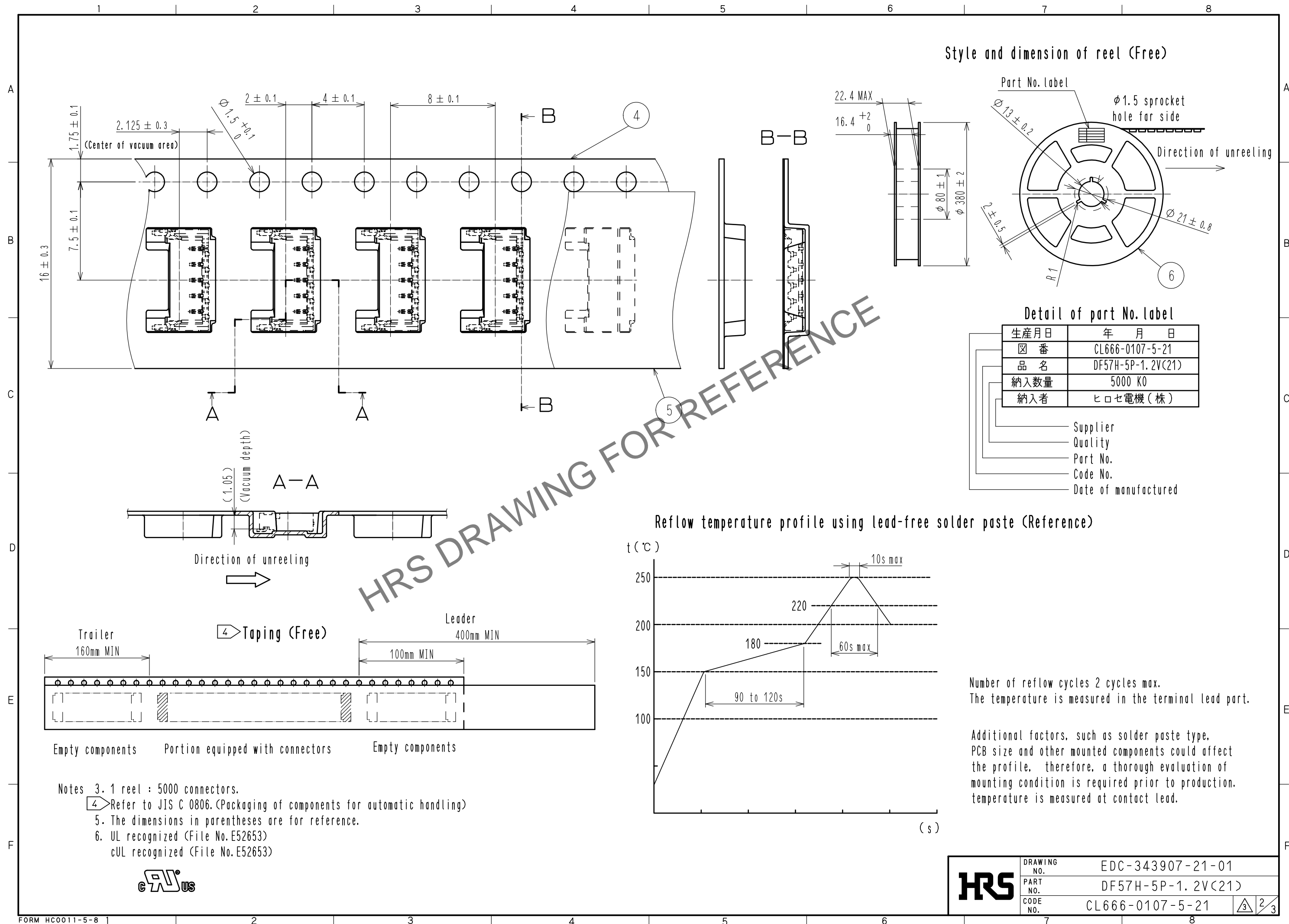


May.1.2024 Copyright 2024 HIROSE ELECTRIC CO., LTD. All Rights Reserved.  
In case of consideration for using Automotive equipment / device which demand high reliability, kindly contact our sales window correspondents.



- Notes
3. 1 reel : 5000 connectors.
- 4 Refer to JIS C 0806. (Packaging of components for automatic handling)
5. The dimensions in parentheses are for reference.
6. UL recognized (File No. E52653)
- cUL recognized (File No. E52653)



HRS

DRAWING NO.	EDC-343907-21-01
PART NO.	DF57H-5P-1.2V(21)
CODE NO.	CL666-0107-5-21

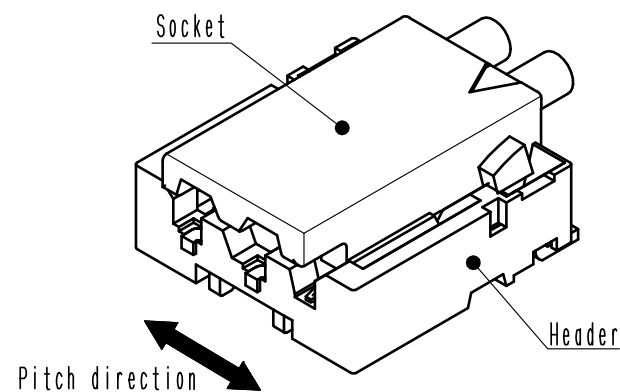
3/2/3

May.1.2024 Copyright 2024 HIROSE ELECTRIC CO., LTD. All Rights Reserved.  
In case of consideration for using Automotive equipment / device which demand high reliability, kindly contact our sales window correspondents.

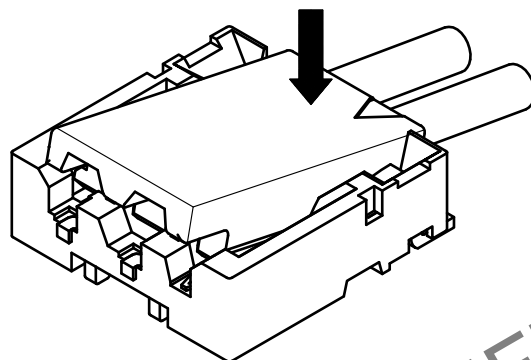
# DF57 Series Mating / Unmating Operation Instruction

## Mating

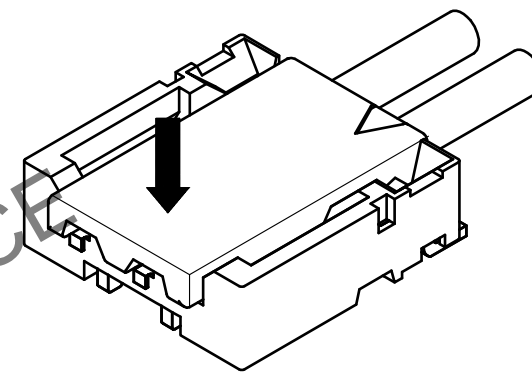
①By positioning the convexity of the socket sides to the header concavity, align the centers of the socket and the header in pitch direftion.



②Slightly press the socket down at cable side to tilted angle.

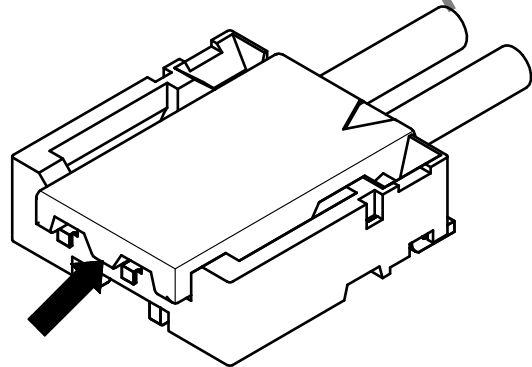


③Press down at the lever side with stabilizing the cable side to insert. Mating completes.

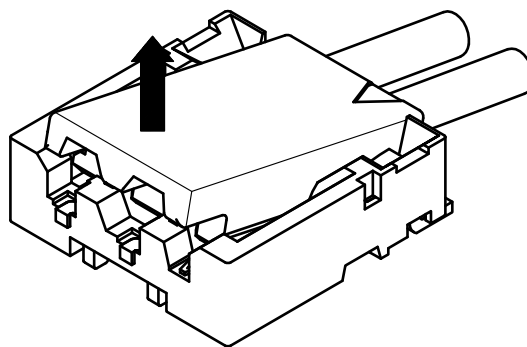


## Unmating

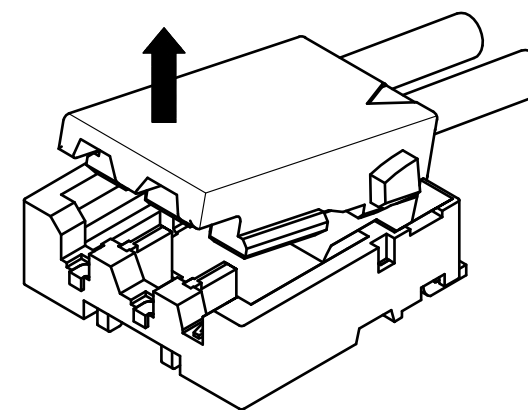
①Hook the lever with finger nail.



②Lift up to the upper difrection and friction lock is released.



③Lift up to the upper direction and positive lock is released. Removal completes.



**HRS**

DRAWING NO.	EDC-343907-21-01
PART NO.	DF57H-5P-1.2V(21)
CODE NO.	CL666-0107-5-21

3/3