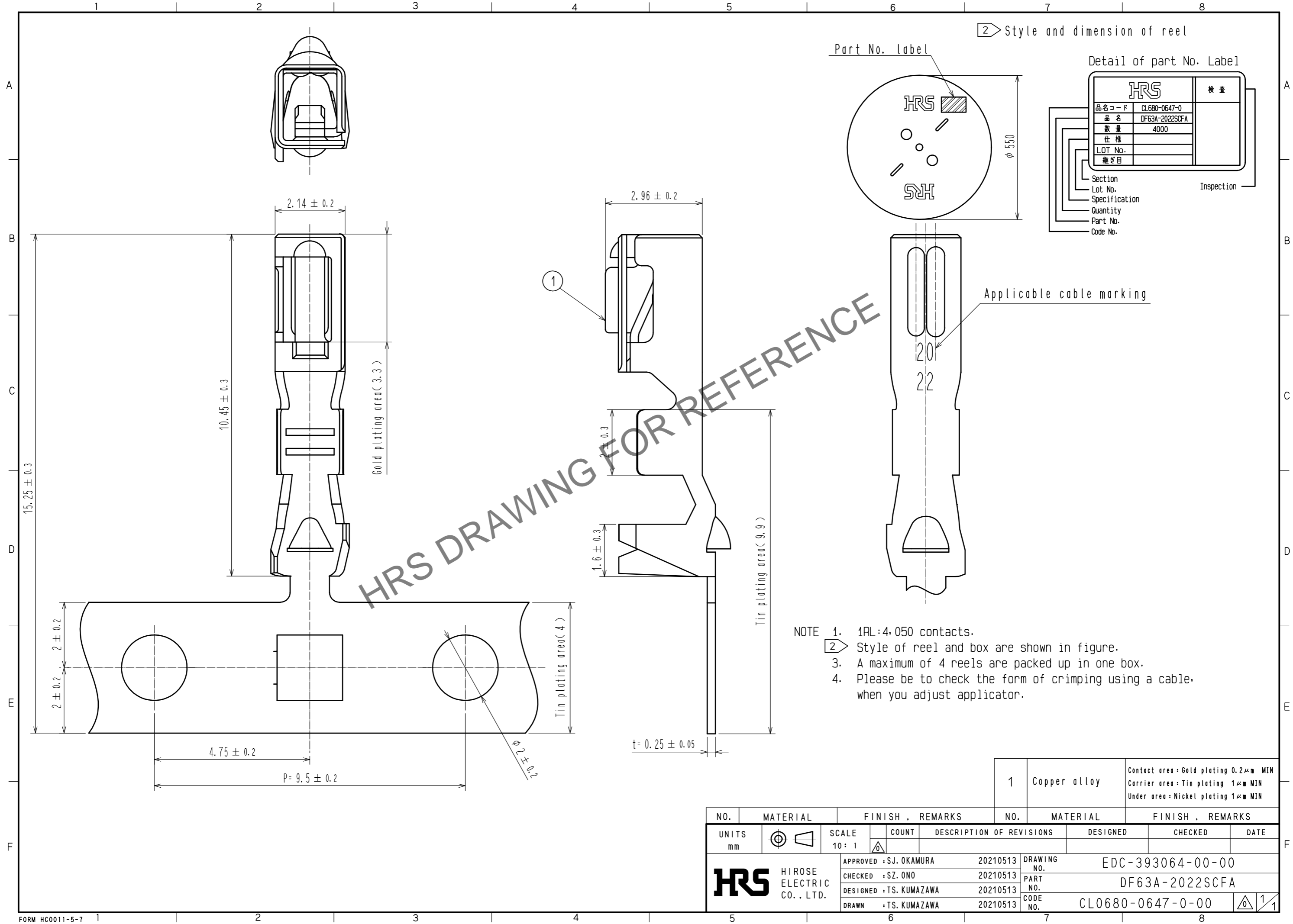


Aug.1.2024 Copyright 2024 HIROSE ELECTRIC CO., LTD. All Rights Reserved.  
In case of consideration for using Automotive equipment / device which demand high reliability, kindly contact our sales window correspondents.



Part No. Label

Style and dimension of reel

Detail of part No. Label

HRS		検査
品名コード	CL680-0647-0	
品名	DF63A-2022SCFA	
数量	4000	
仕様		
LOT No.		
継ぎ目		

Section  
Lot No.  
Specification  
Quantity  
Part No.  
Code No.

Inspection

- NOTE
- 1RL:4,050 contacts.
  - Style of reel and box are shown in figure.
  - A maximum of 4 reels are packed up in one box.
  - Please be to check the form of crimping using a cable, when you adjust applicator.

NO.	MATERIAL	FINISH . REMARKS	NO.	MATERIAL	FINISH . REMARKS
			1	Copper alloy	Contact area : Gold plating 0.2μm MIN Carrier area : Tin plating 1μm MIN Under area : Nickel plating 1μm MIN
UNITS mm		SCALE 10 : 1	COUNT	DESCRIPTION OF REVISIONS	
HIROSE ELECTRIC CO., LTD.			APPROVED : SJ. OKAMURA 20210513	DRAWING NO. EDC-393064-00-00	
			CHECKED : SZ. ONO 20210513	PART NO. DF63A-2022SCFA	
			DESIGNED : TS. KUMAZAWA 20210513	CODE NO. CL0680-0647-0-00	
			DRAWN : TS. KUMAZAWA 20210513	1/1	