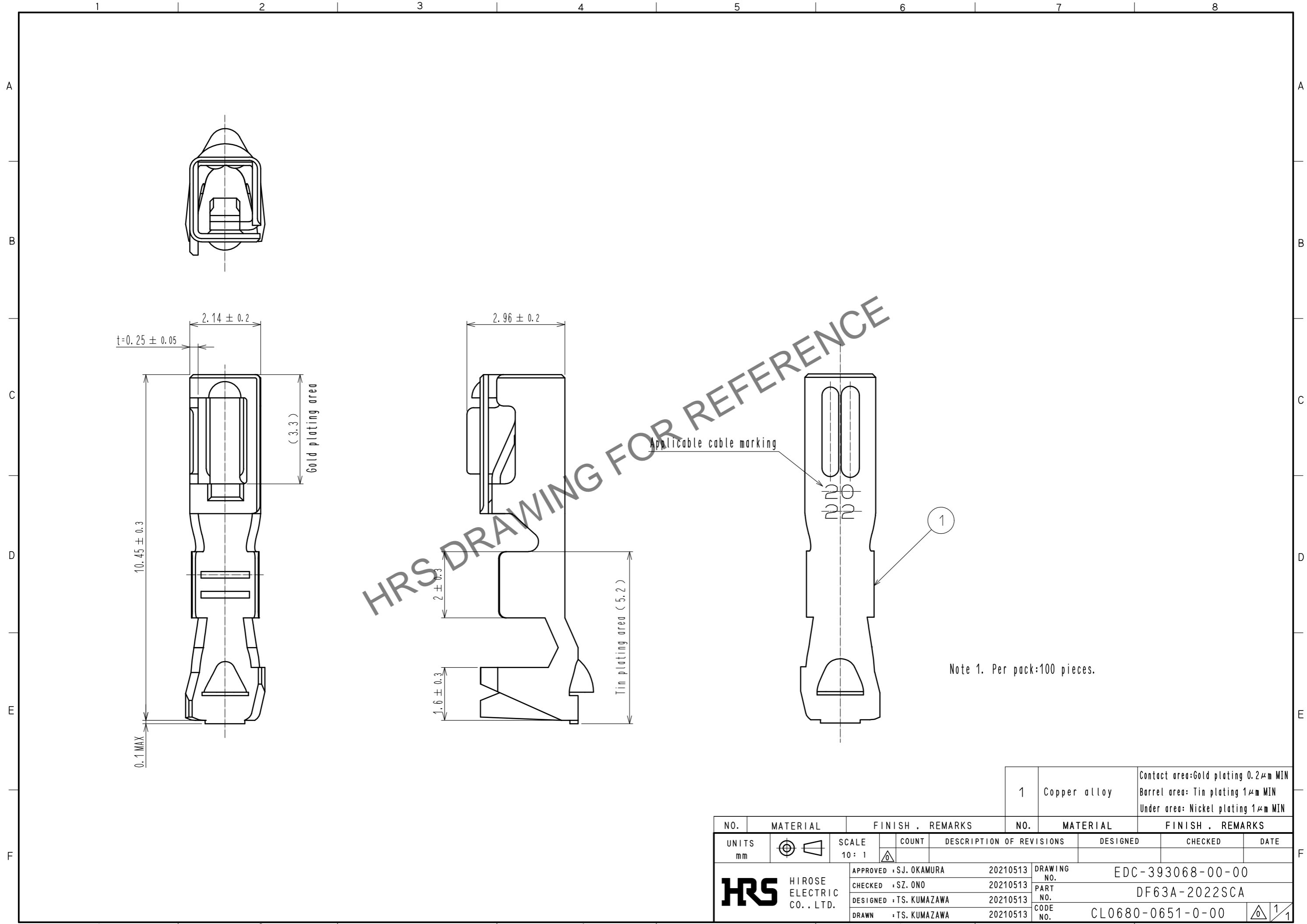


Aug.1.2024 Copyright 2024 HIROSE ELECTRIC CO., LTD. All Rights Reserved.
 In case of consideration for using Automotive equipment / device which demand high reliability, kindly contact our sales window correspondents.



HRS DRAWING FOR REFERENCE

Note 1. Per pack:100 pieces.

NO.	MATERIAL	FINISH . REMARKS	NO.	MATERIAL	FINISH . REMARKS
1	Copper alloy	Contact area:Gold plating 0.2μm MIN Barrel area: Tin plating 1μm MIN Under area: Nickel plating 1μm MIN			

UNITS	SCALE	COUNT	DESCRIPTION OF REVISIONS	DESIGNED	CHECKED	DATE
mm	10:1	△				

HRS HIROSE ELECTRIC CO., LTD.	APPROVED : SJ. OKAMURA	20210513	DRAWING NO.	EDC-393068-00-00
	CHECKED : SZ. ONO	20210513	PART NO.	DF63A-2022SCA
	DESIGNED : TS. KUMAZAWA	20210513	CODE NO.	CL0680-0651-0-00
	DRAWN : TS. KUMAZAWA	20210513		