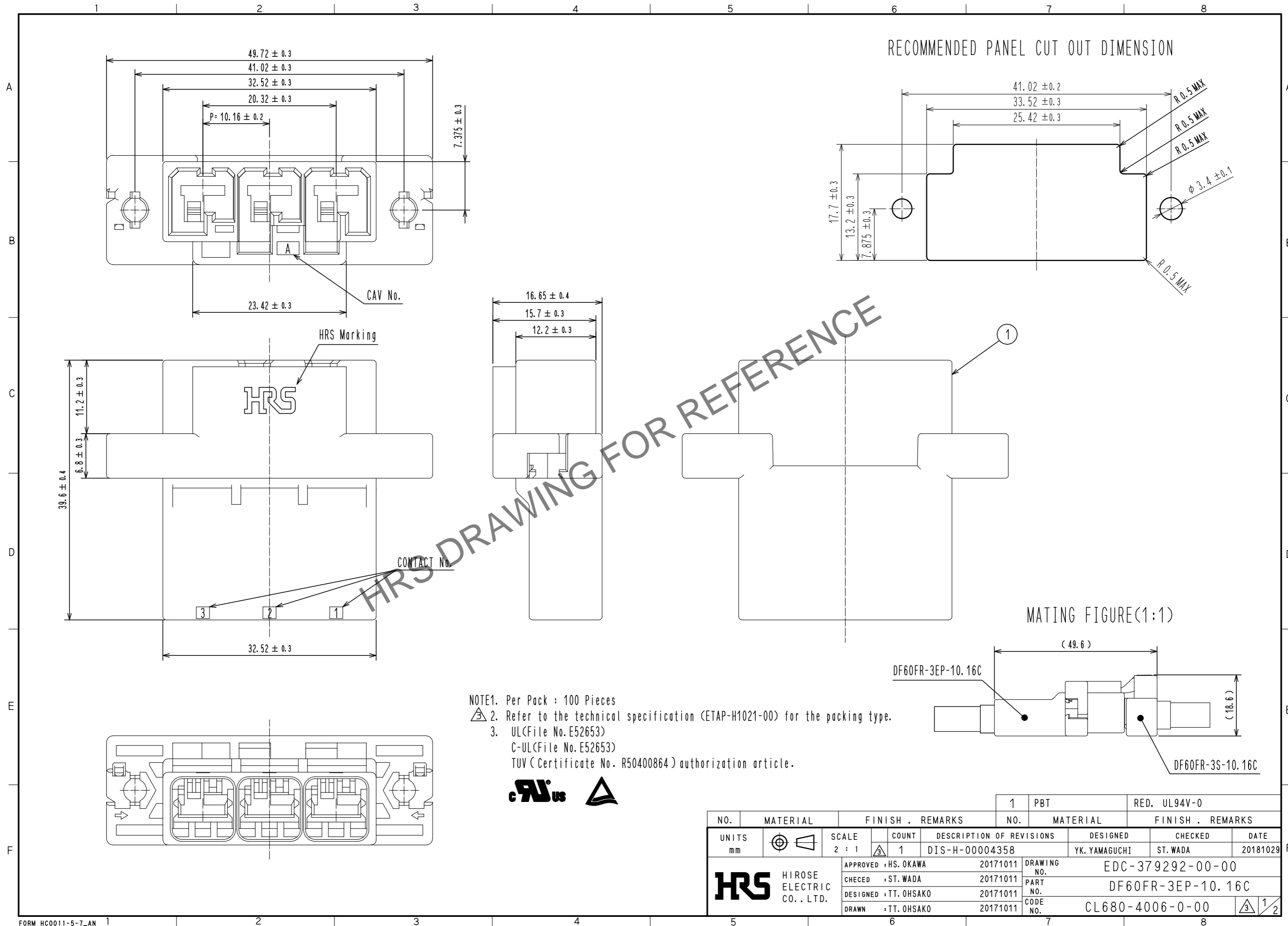


Dec.1.2024 Copyright 2024 HIROSE ELECTRIC CO., LTD. All Rights Reserved.
In case of consideration for using Automotive equipment / device which demand high reliability, kindly contact our sales window correspondents.



NOTE1. Per Pack : 100 Pieces
 2. Refer to the technical specification (ETAP-H1021-00) for the packing type.
 3. UL(File No. E52653)
 C-UL(File No. E52653)
 TUV (Certificate No. R50400864) authorization article.



NO.	MATERIAL	FINISH . REMARKS	NO.	MATERIAL	FINISH . REMARKS			
1	PBT		1	RED, UL94V-0				
UNITS mm		SCALE 2 : 1	COUNT 1	DESCRIPTION OF REVISIONS DIS-H-00004358	DESIGNED YK. YAMAGUCHI	CHECKED ST. WADA	DATE 20181029	
HRS HIROSE ELECTRIC CO., LTD.		APPROVED : HS. OKAWA	20171011	DRAWING NO. EDC-379292-00-00				
		CHECED : ST. WADA	20171011	PART NO. DF60FR-3EP-10.16C				
		DESIGNED : TT. OHSAKO	20171011	CODE NO. CL680-4006-0-00				
		DRAWN : TT. OHSAKO	20171011	<table border="1"> <tr> <td>1</td> <td>2</td> </tr> </table>			1	2
1	2							

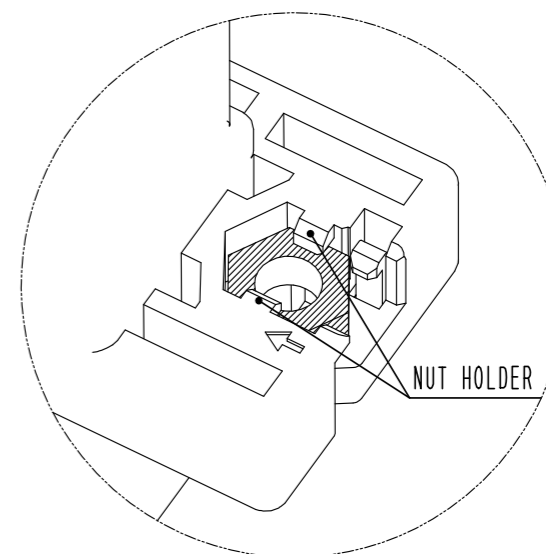
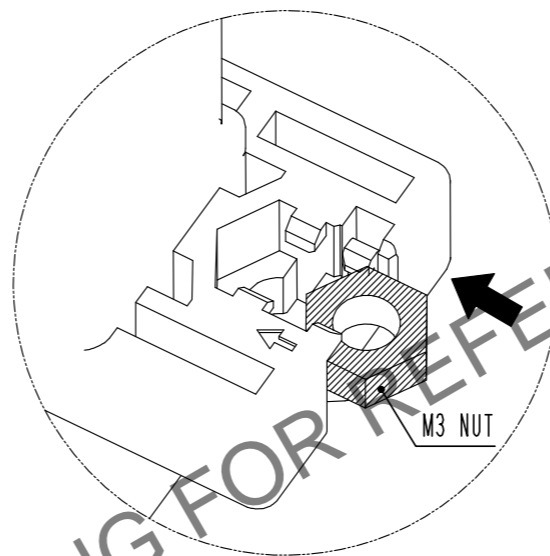
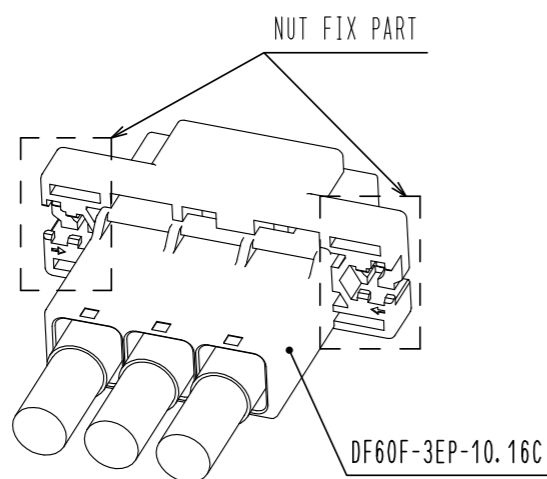
Dec.1.2024 Copyright 2024 HIROSE ELECTRIC CO., LTD. All Rights Reserved.
In case of consideration for using Automotive equipment / device which demand high reliability, kindly contact our sales window correspondents.

DF60F IN-LINE TYPE RECOMMENDED PANEL MOUNTING MANUAL (WHEN NUTS USES)

NUT INSTALLATION PROCESS

1. SLIDE A NUT (SIZE:M3) TO NUT FIX PART.

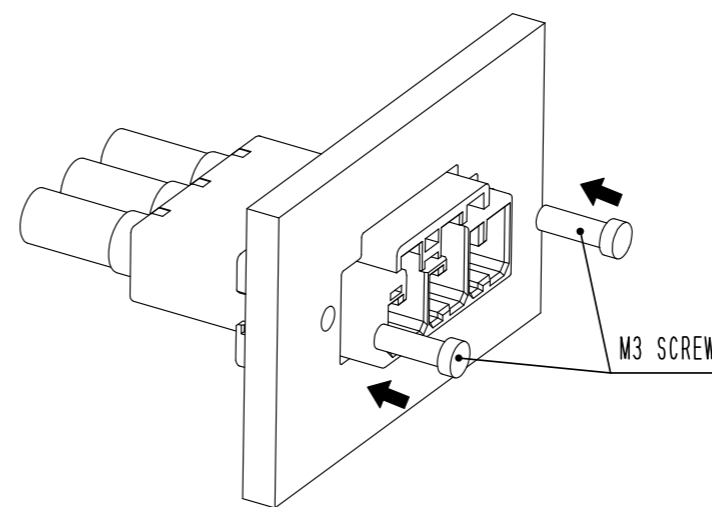
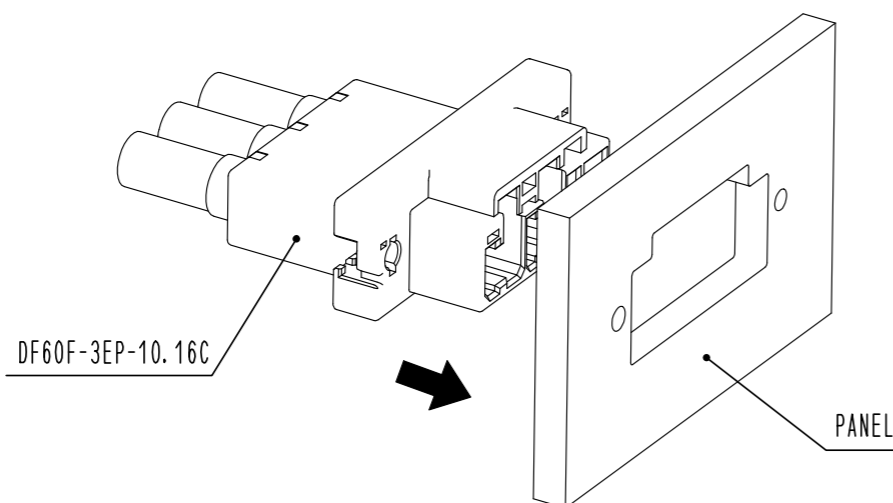
2. PRESS DOWN THE NUT UNTIL IT CLICKS,
THEN THIS SOUND MEANS THE NUT HAS INSERTED
INTO NUT HOLDER.



PANEL MOUNTING PROCESS

1. INSERT CONNECTOR INTO PANEL CUT OUT PART.

2. TIGHTEN A SCREW (SIZE:M3) TO FIX WITH PANEL.
RECOMMENDED TORQUE : LESS THAN 0.49N · m



HRS

DRAWING NO.	EDC-379292-00-00
PART NO.	DF60FR-3EP-10.16C
CODE NO.	CL680-4006-0-00

3/2