

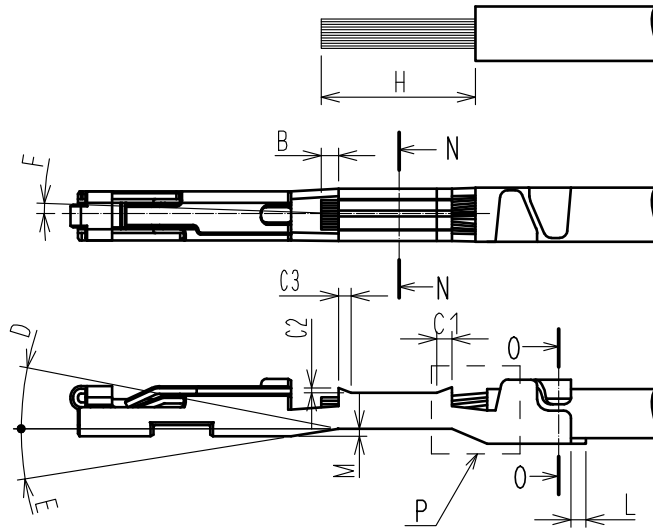
1. Scope

This technical specification describes crimp condition of ZE05-2022SCF (CL752-2001-0)

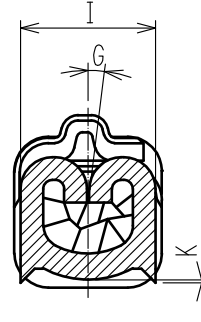
2. Applicable wire

- Applicable conductor size : 0.3~0.5SQ
- Applicable outer diameter : $\phi 1.4 \sim \phi 1.7$

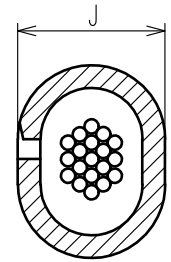
3. Quality standard



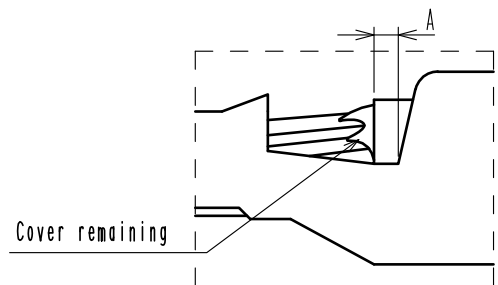
N-NCWIRE BARREL
CROSS-SECTION IMAGE)



O-O<INSULATION BARREL
CROSS-SECTION IMAGE)



P enlarged view



CHECK POINT		SPECIFICATION
INSULATOR LOCATION	A	0.3~0.8 mm
CONDUCTOR LOCATION	B	0.1~0.6 mm
BELL-MOUTH	C1	0.1~0.4 mm
	C2	0.1 mm max
	C3	0.15 mm max
BEND-UP	D	2° max
BEND-DOWN	E	5° max
TWIST	F	±2° max
ROLLING	G	±5° max
CABLE STRIP LENGTH	H	4.0~4.6 mm
CRIMP WIDTH	WIRE BARREL	I 1.5 mm max
	INSULATION BARREL	J 1.63 mm max
BARR HEIGHT	K	0.12 mm max
REMAINING CARRIER BARR	L	0.1 mm max
STEP HEIGHT BETWEEN TERMINAL TIP BOX AND WIRE BARREL *THIS IS ONLY APPLIED TO BENDING-UP TERMINALS	M	0.2 mm max

Note1. Please refer to ZE05-2022SCF crimp condition table for the crimp height.

Note2. Please confirm that the crimped terminal can be inserted into an appropriate housing without issues.

△ Full review

COUNT	DESCRIPTION OF REVISIONS	DESIGNED	CHECKED	DATE
△ 1	DIS-T-00022983	AN. SAIKI	TY. MOGI	20250123
TITLE				
ZE05-2022SCF CRIMP QUALITY STANDARD				
TECHNICAL SPECIFICATION				
ETAD-T0589-00				
		HIROSE ELECTRIC CO., LTD.		
		APPROVED	HK. UMEHARA	20181210
		CHECKED	HH. TSUKUMO	20181207
		CHARGED	YONGMUN LEE	20181207
		WRITTEN	MN. SATOH	20181207
		1		1