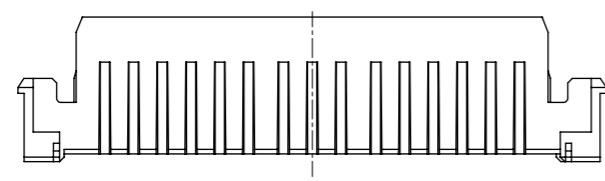
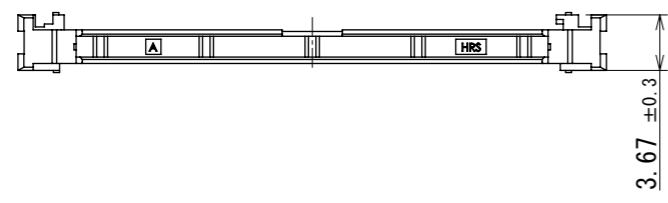
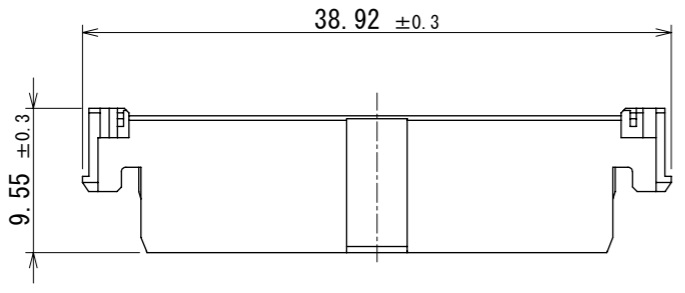


Dec.1.2024 Copyright 2024 HIROSE ELECTRIC CO., LTD. All Rights Reserved.
In case of consideration for using Automotive equipment / device which demand high reliability, kindly contact our sales window correspondents.

ELV, RoHS COMPLIANT



PACKAGING SPECIFICATION

△

- (1) 100pcs parts are contained in a plastic bag.
- (2) 25 plastic bags are contained in a carton. (Total 2,500 pcs in one carton)
- (3) Close the box and seal with packing tape.

W= (349) mm
D= (258) mm
H= (118) mm

HRS DRAWING FOR REFERENCE



NOTE1. HOUSING ZK1-32DP-HU (CL755-2200-0-00) SHOULD BE USED.

1	PA	BEIGE						
NO.	MATERIAL	FINISH	REMARKS	NO.	MATERIAL	FINISH	REMARKS	
UNITS		SCALE	COUNT	DESCRIPTION OF REVISIONS		DESIGNED	CHECKED	DATE
mm		2:1	△ 2	DIS-T-00021546		TS. SHIMIZU	TY. MOGI	2024. 08. 02
HRS HIROSE ELECTRIC CO., LTD.		APPROVED :	AH. EDASHIGE	2023. 10. 23	DRAWING NO. EDC-397753-00-00			
		CHECKED :	HH. TSUKUMO	2023. 10. 23	PART NO. ZK1-32DP-R			
		DESIGNED :	TS. SHIMIZU	2023. 10. 23	CODE NO. CL0755-2201-0-00			
		DRAWN :	MA. TAGUCHI	2023. 10. 23	△ 1/1			