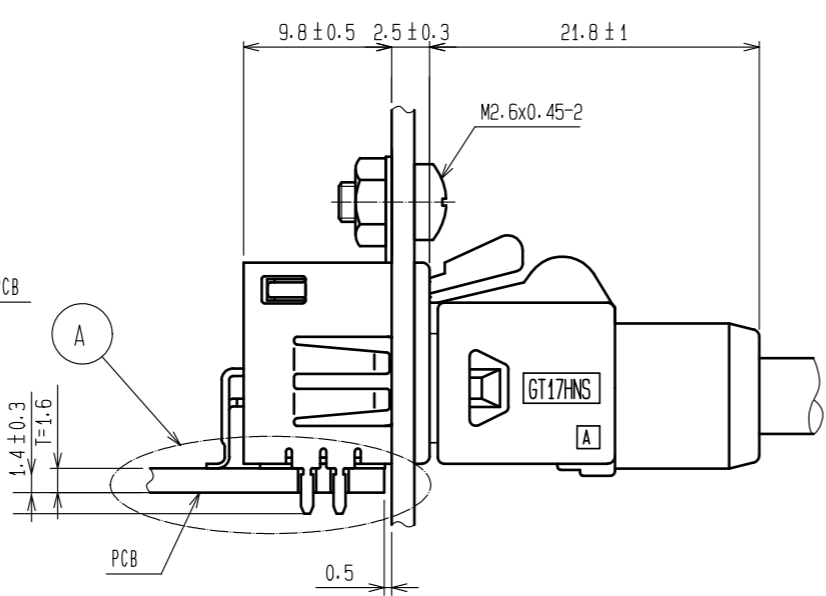
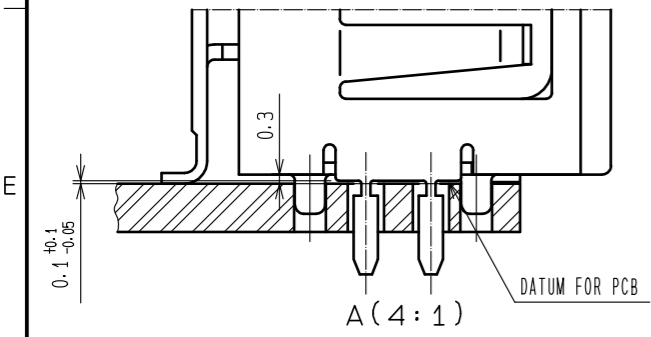
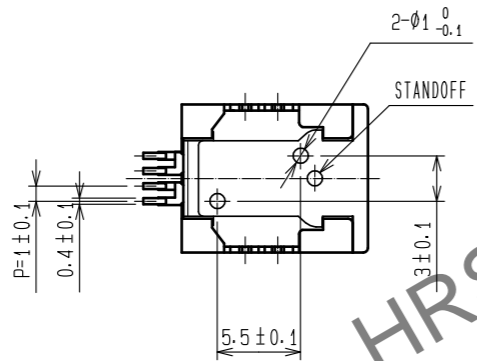
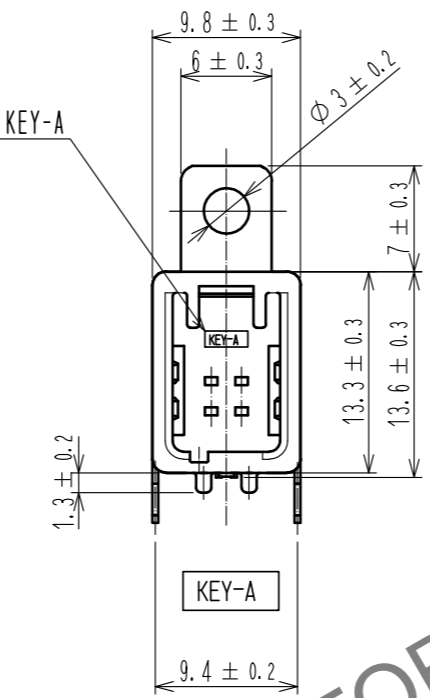
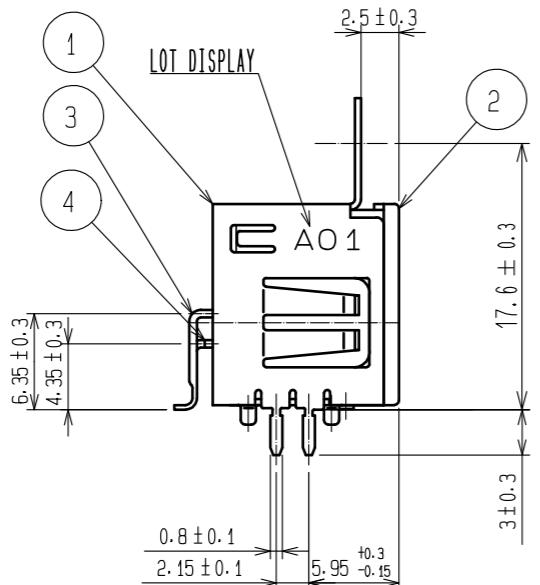
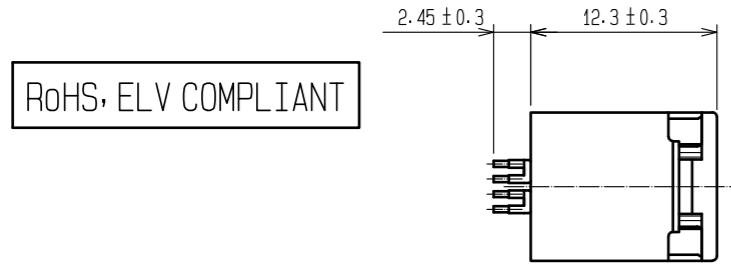
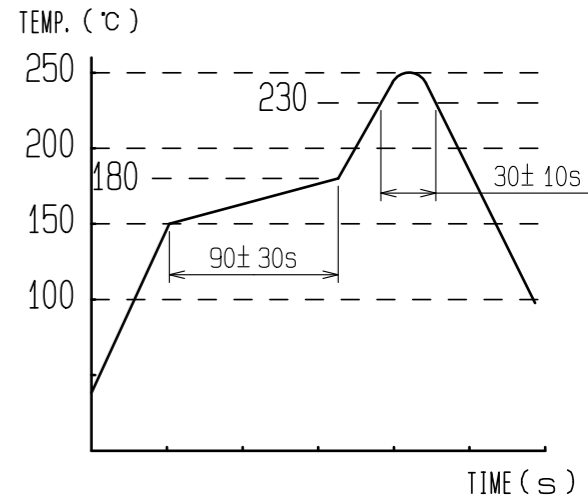


Sep.1.2024 Copyright 2024 HIROSE ELECTRIC CO., LTD. All Rights Reserved.
In case of consideration for using Automotive equipment / device which demand high reliability, kindly contact our sales window correspondents.

RoHS, ELV COMPLIANT

NOTES

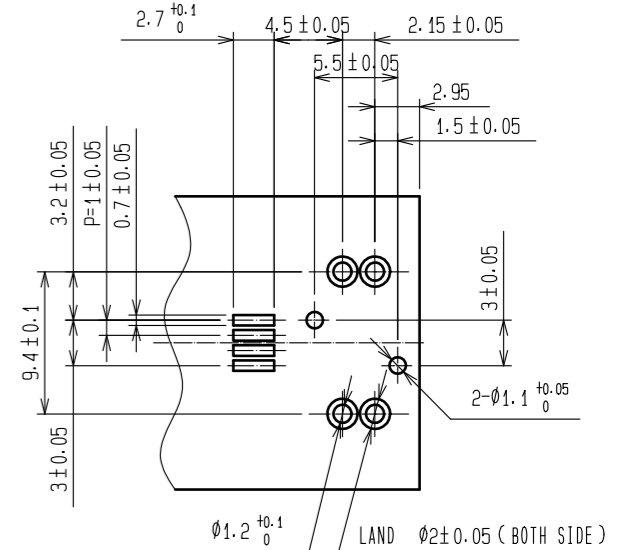
- 1) RECOMMENDED REFLOW PROFILE (SEE RIGHT GRAPH)
TYPE: IR REFLOW
ATMOSPHERE: AIR OR N₂
CYCLE TIME: UP TO 2 CYCLES OF REFLOW SOLDERING ARE POSSIBLE UNDER THE CONDITIONS, PROVIDED THAT THERE IS A RETURN TO NORMAL TEMPERATURE BETWEEN THE FIRST AND SECOND CYCLE.
PEAK TEMPERATURE: 250°C
230°C MIN. FOR 20 TO 40 SECONDS.
PREHEATING AREA 150 TO 180 °C FOR 60 TO 120 SECONDS.
- 2) HAND SOLDERING: 280-300°C, 2S MAX.
- 3) CONTACT COPLANARITY: 0.1mm MAX.
- 4) RECOMMENDED THICKNESS OF PCB: 1.6mm
- 5) RECOMMENDED THICKNESS OF SOLDERING PASTE: 0.12mm



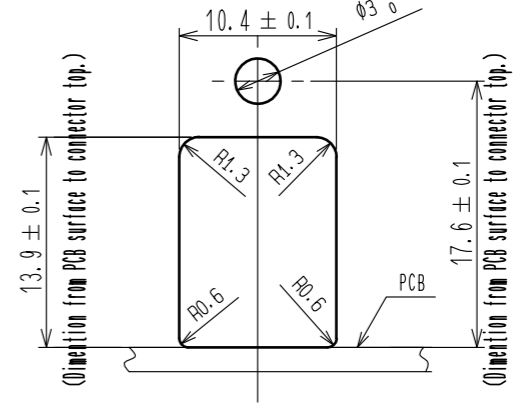
IN COMBINATION WITH RIGHT-ANGLE CONNECTOR

IN COMBINATION WITH STRAIGHT CONNECTOR

HRS DRAWING FOR REFERENCE



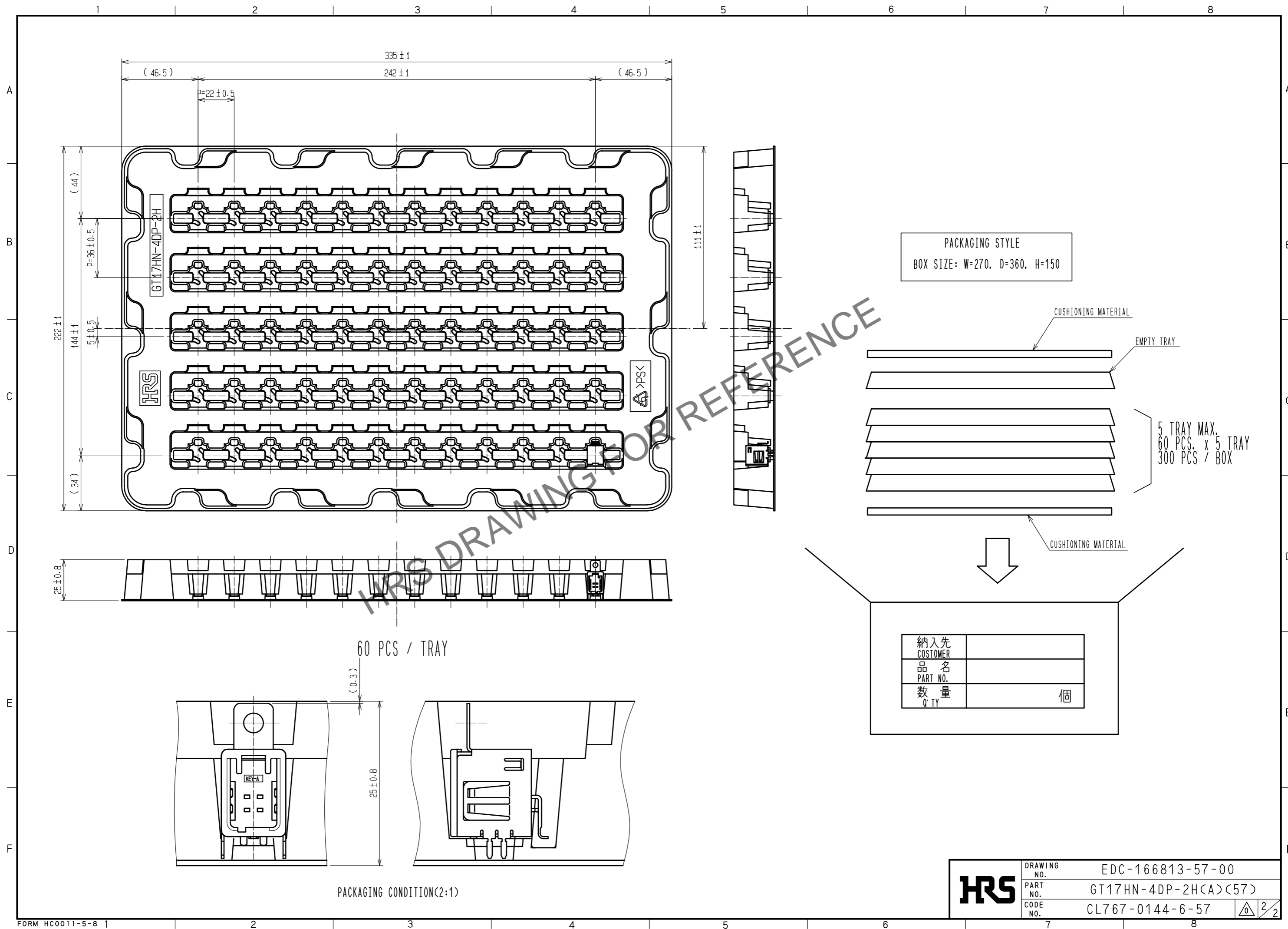
RECOMMENDED PCB LAYOUT



RECOMMENDED PANEL LAYOUT

2	PPS	BROWN	4	BRASS	TIN PLATING			
1	COPPER ALLOY	TIN PLATING	3	BRASS	TIN PLATING			
NO.	MATERIAL	FINISH . REMARKS	NO.	MATERIAL	FINISH . REMARKS			
UNITS	mm	SCALE	2 : 1	COUNT	DESCRIPTION OF REVISIONS	DESIGNED	CHECKED	DATE
HRS		HIROSE ELECTRIC CO., LTD.		APPROVED	: KI. HIROKAWA	20200331	DRAWING NO. EDC-166813-57-00	
				CHECKED	: EJ. WAKATSUKI	20200327	PART NO. GT17HN-4DP-2H(A)(57)	
				DESIGNED	: TS. KUBOTA	20200325	CODE NO. CL767-0144-6-57	
				DRAWN	: YK. MITSUISHI	20200311	1/2	

Sep.1.2024 Copyright 2024 HIROSE ELECTRIC CO., LTD. All Rights Reserved.
 In case of consideration for using Automotive equipment / device which demand high reliability, kindly contact our sales window correspondents.



DRAWING NO.	EDC-166813-57-00
PART NO.	GT17HN-4DP-2H(A)(57)
CODE NO.	CL767-0144-6-57