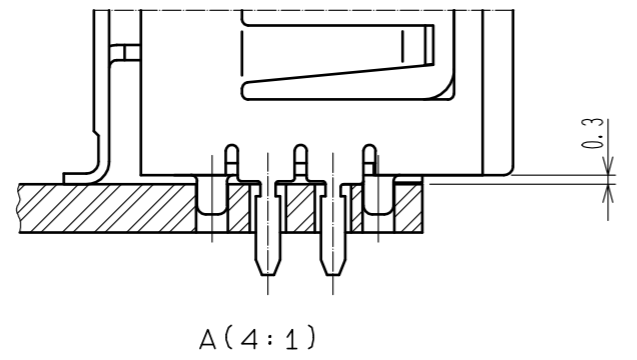
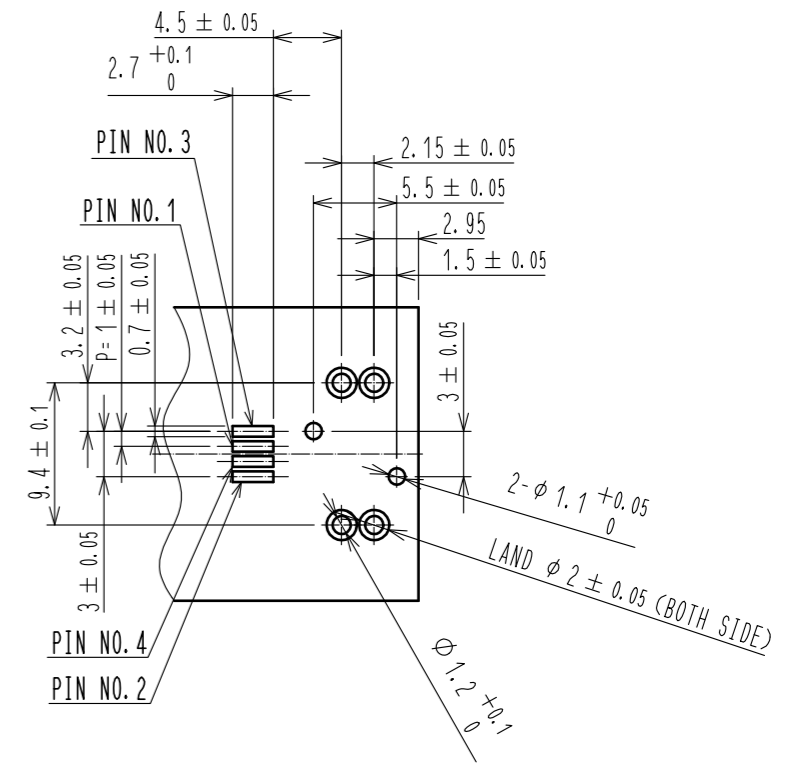
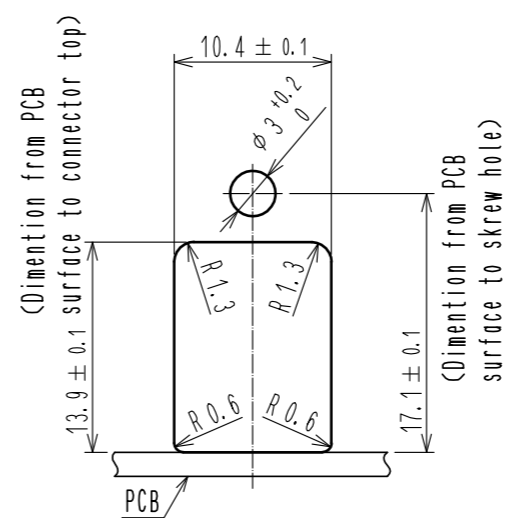
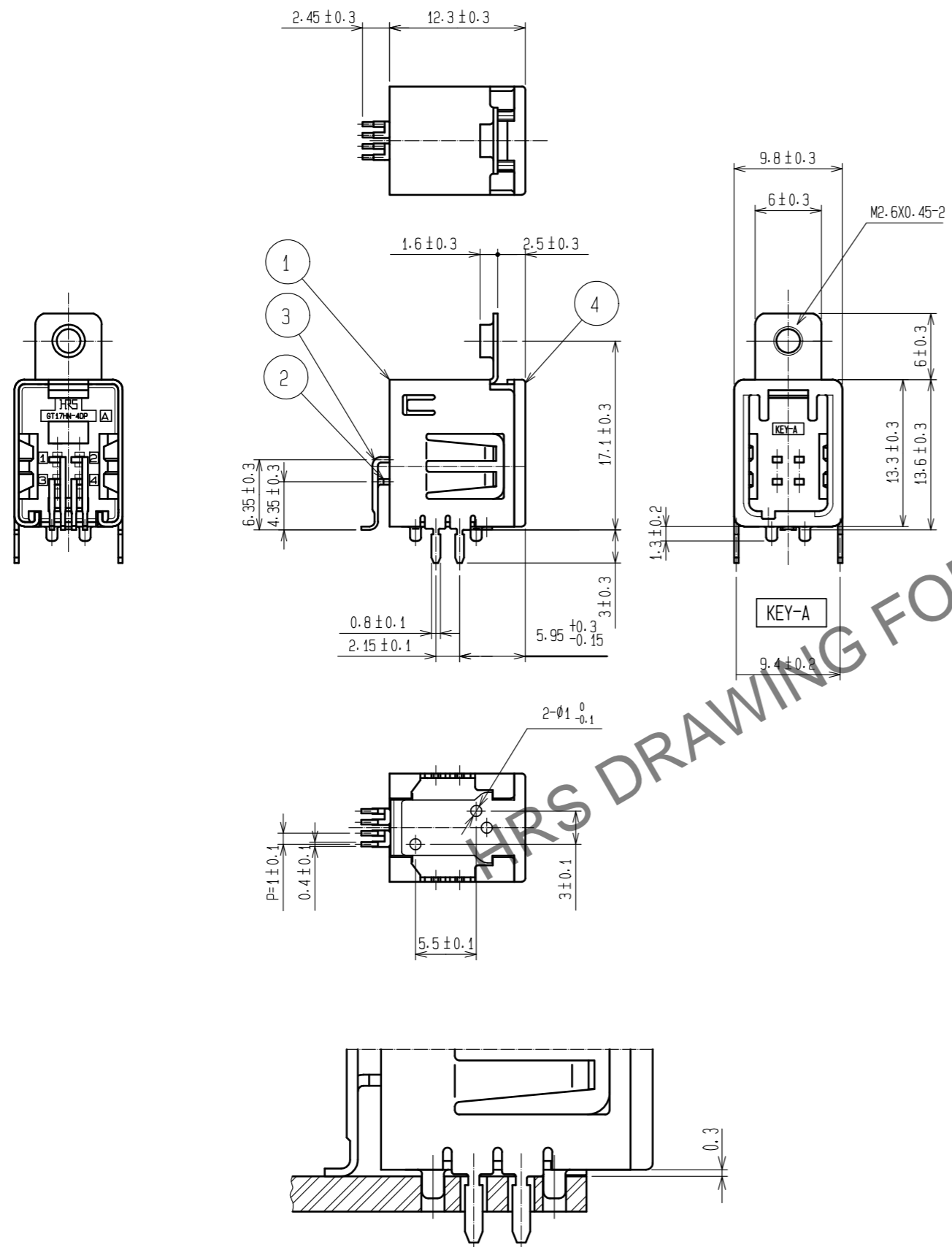
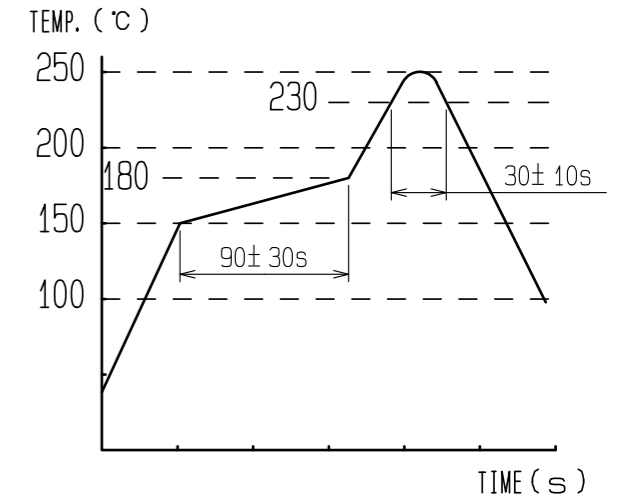


Sep.1.2024 Copyright 2024 HIROSE ELECTRIC CO., LTD. All Rights Reserved.  
In case of consideration for using Automotive equipment / device which demand high reliability, kindly contact our sales window correspondents.

RoHS, ELV COMPLIANT

NOTES

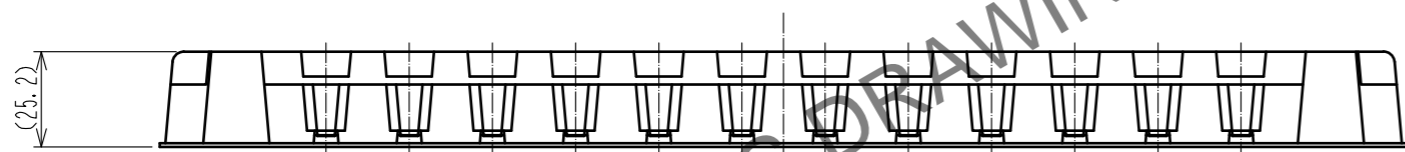
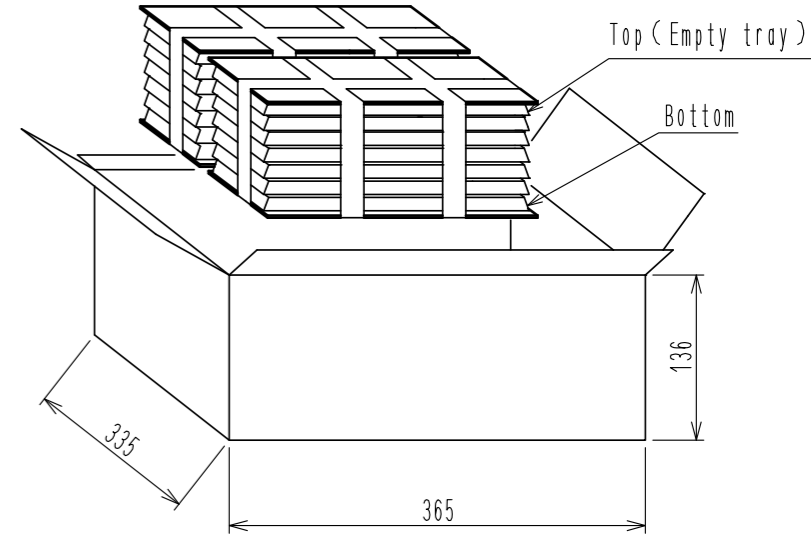
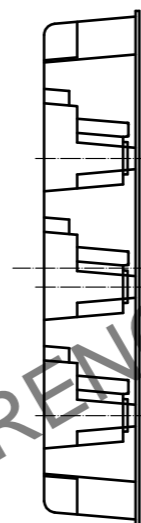
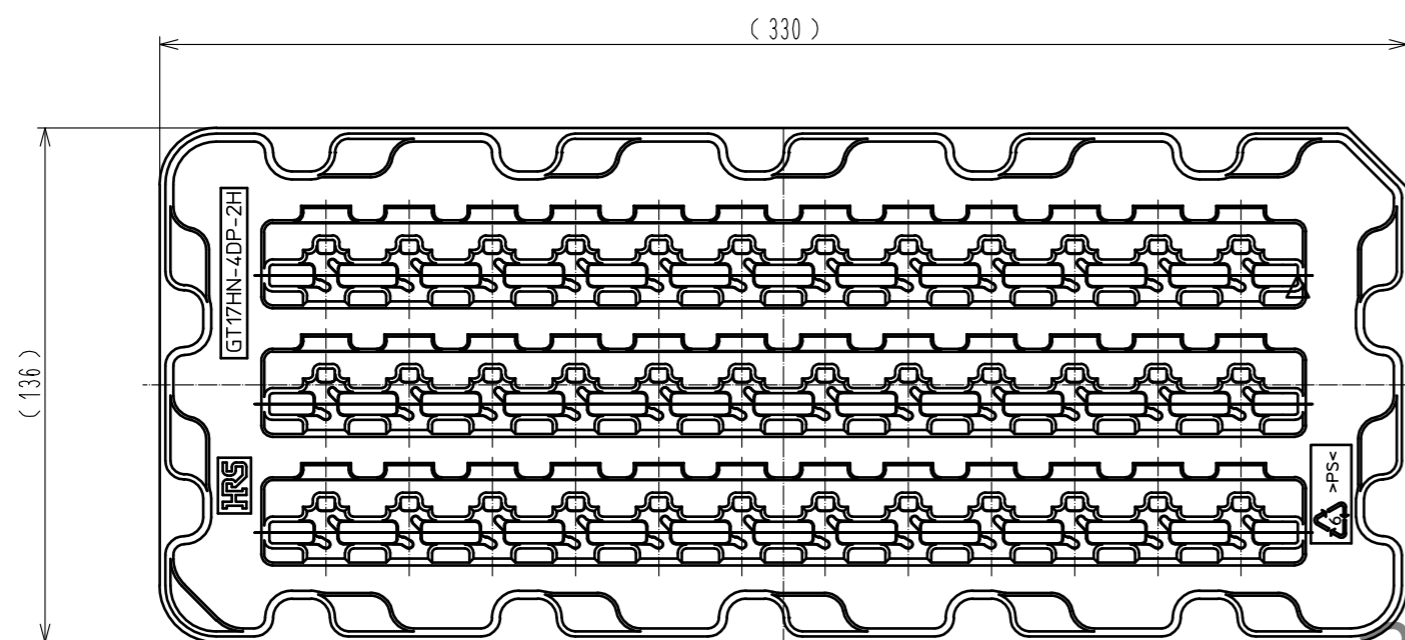
- 1) RECOMMENDED REFLOW PROFILE (SEE RIGHT GRAPP)  
CYCLE TIME: UP TO 2 CYCLES OF REFLOW SOLDERING ARE POSSIBLE UNDER THE CONDITIONS. PROVIDED THAT THERE IS A RETURN TO NOMAL TEMPERATURE BETWEEN THE FIRST AND SECOND CYCLE.  
PEAK TEMPERATURE: 250°C  
230°C MIN. FOR 20 TO 40 SECONDS.  
PREHEATING AREA 150 TO 180 °C FOR 60 TO 120 SECONDS.
- 2) HAND SOLDERING: 280-300°C, 2S MAX.
- 3) CONTACT COPLANARITY: 0.1mm MAX.
- 4) RECOMMENDED THICKNESS OF PCB: 1.6mm
- 5) RECOMMENDED THICKNESS OF SOLDERING PASTE: 0.12mm



2	BRASS	TIN PLATING	4	PPS	BROWN		
1	COPPER ALLOY	TIN PLATING	3	BRASS	TIN PLATING		
NO.	MATERIAL	FINISH . REMARKS	NO.	MATERIAL	FINISH . REMARKS		
UNITS mm		SCALE 2 : 1	COUNT 	DESCRIPTION OF REVISIONS	DESIGNED	CHECKED	DATE
<b>HRS</b> HIROSE ELECTRIC CO., LTD.		APPROVED : KI. HIROKAWA	20200331	DRAWING NO.	EDC-166813-67-00		
		CHECKED : E.J. WAKATSUKI	20200327	PART NO.	GT17HN-4DP-2H(A)(67)		
		DESIGNED : TS. KUBOTA	20200325	CODE NO.	CL767-0144-6-67		
		DRAWN : YK. MITSUISHI	20200311		1/2		

Sep.1.2024 Copyright 2024 HIROSE ELECTRIC CO., LTD. All Rights Reserved.  
In case of consideration for using Automotive equipment / device which demand high reliability, kindly contact our sales window correspondents.

# PACKING SPECIFICATIONS



36 PCS / TRAY

Box size:W=365 · D=335 · H=136  
Described client, quantity and product on boxes

36pcs/Tray  
6trays(fifth tray is empty)/Set

216pcs×2set=432pcs/box

<b>HRS</b>	DRAWING NO.	EDC-166813-67-00
	PART NO.	GT17HN-4DP-2H(A)(67)
	CODE NO.	CL767-0144-6-67

2/2