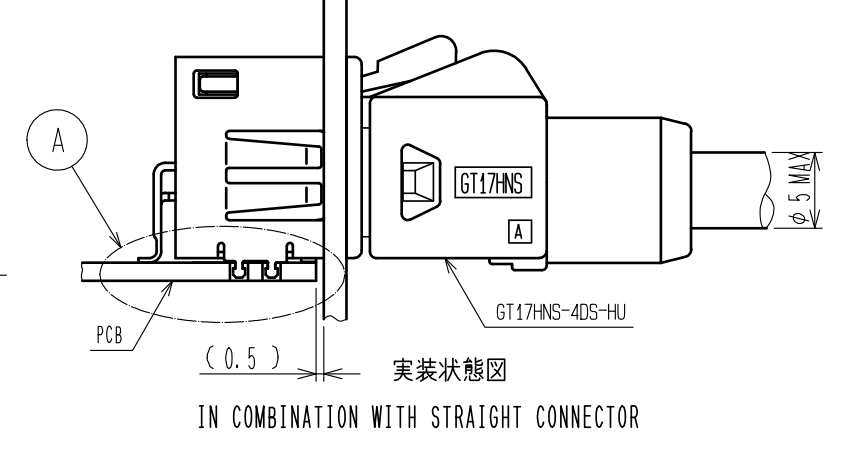
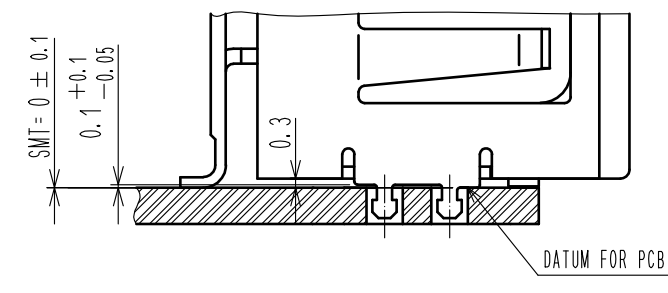
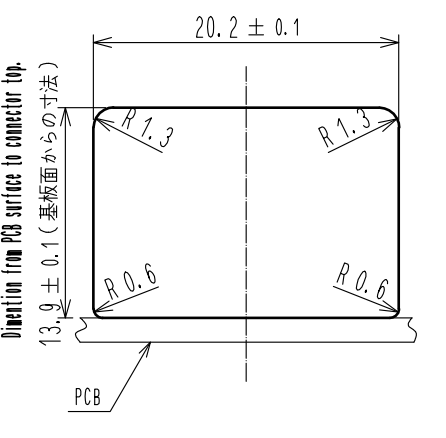
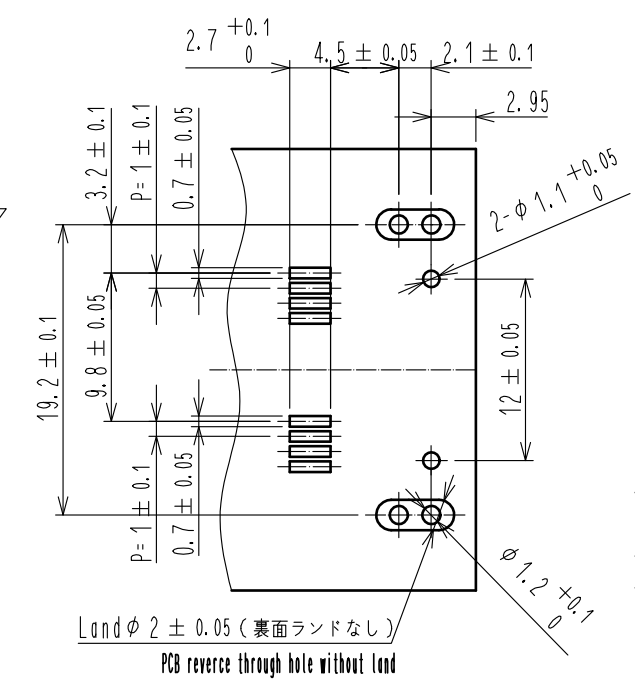
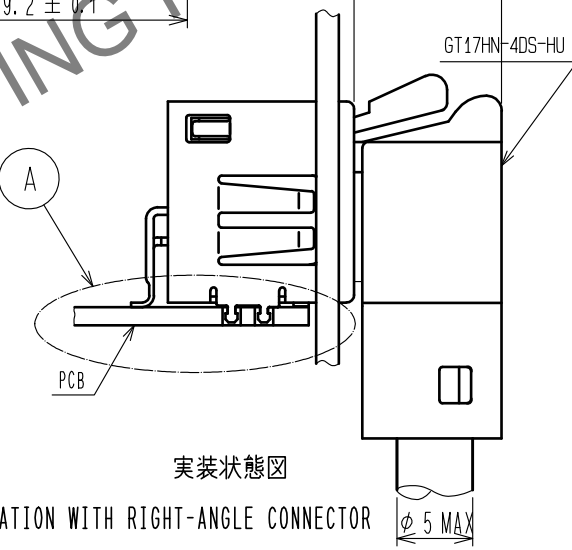
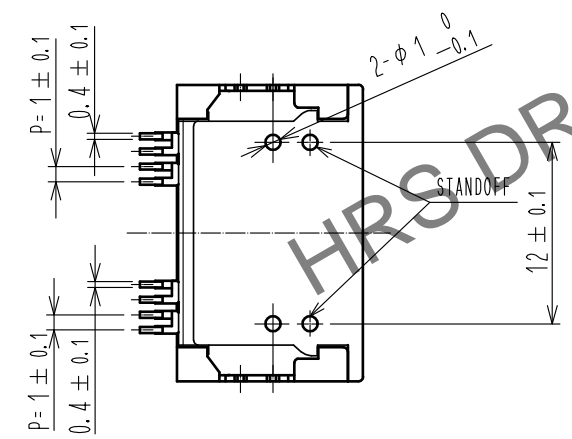
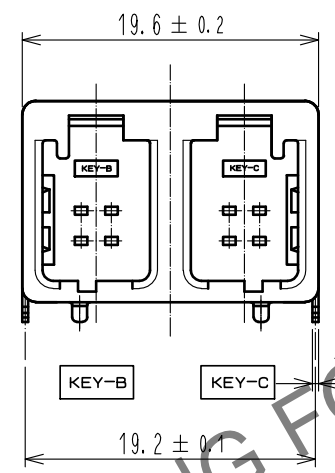
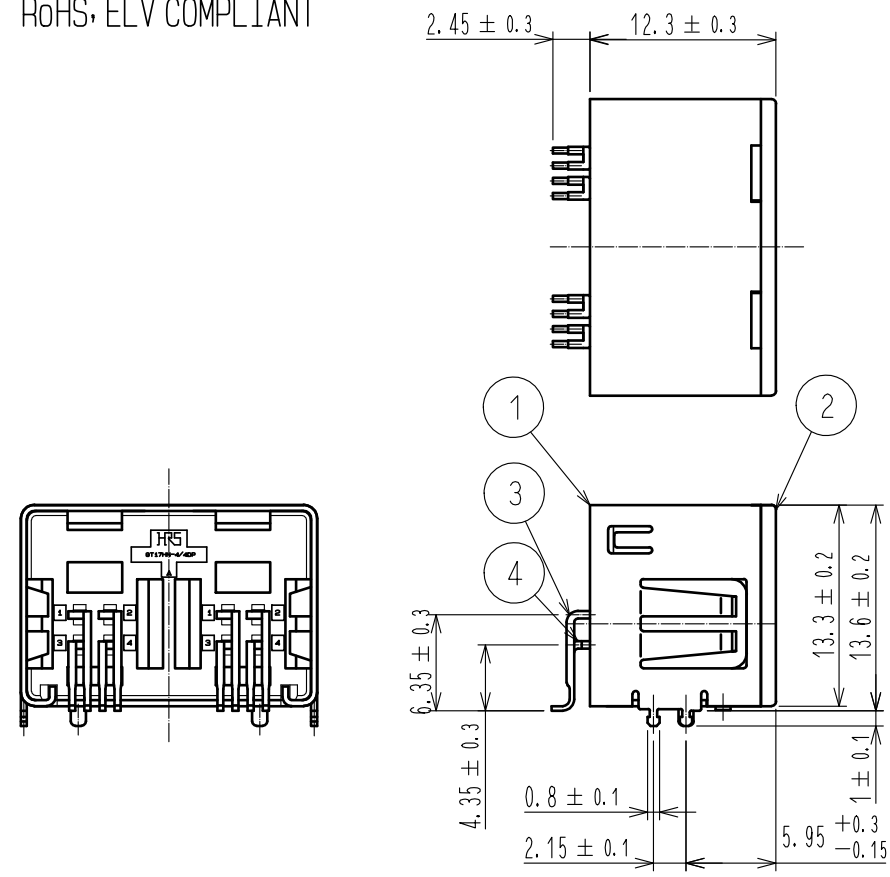


RoHS, ELV 適合品

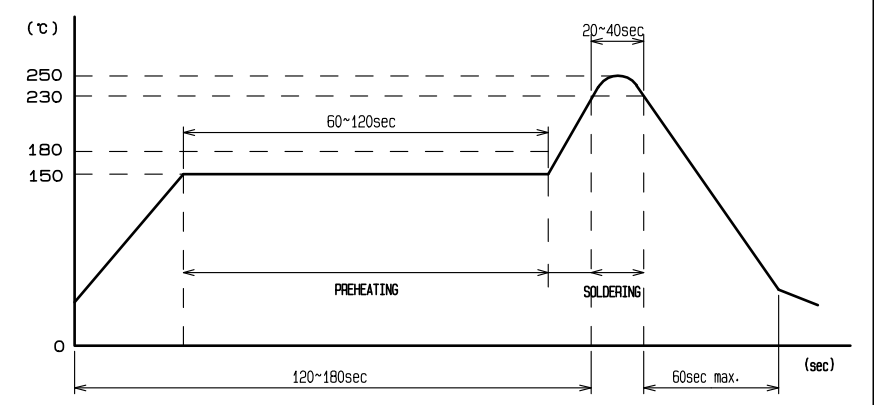
RoHS, ELV COMPLIANT



- Note1. The soldering process is allowed up to twice under the same condition. However, the interval between the first and second process must be maintained at the room temperature.
- リフロー回数: 2回。但し、2回目のリフローにおいては、一度、室温に戻すこと。
- Note2. The temperature indicates the board surface temperature on the connector lead area.
- リフロー温度の測定は、コネクタリード部の基板表面温度を測定のこと。
- Note3. Hand soldering: $280 \sim 300^\circ\text{C}$, 2s max.
- 手半田温度: $280 \sim 300^\circ\text{C}$, 2S以内
- Note4. Coplanarity: 0.1 max.
- 端子平坦度: 0.1以下
- Note5. Recommended thickness of PCB: 1.6mm
- 推奨基板厚: 1.6mm
- Note6. For the prevention excessive stress for connector and PCB, we recommend additional support mechanism if the flange was eliminated.
- コネクタと基板間のこじり荷重を回避するために、フランジなしの本製品は、基板固定の機械的補強を設計的に配慮願います

RECOMMENDED REFLOW PROFILE

IR reflow condition	IR リフロー条件
Preheating area 150°C for 60 to 120 seconds	予備加熱: 60~120秒, 150°C
Peak Temperature: 250°C	ピーク温度: 250°C
Soldering area 235±5°C or 10 seconds max.	リフロー温度: 230~240°C, 10秒以内
230°C min- for 20 to 40 seconds	230°C以上: 20~40秒



IN COMBINATION WITH RIGHT-ANGLE CONNECTOR

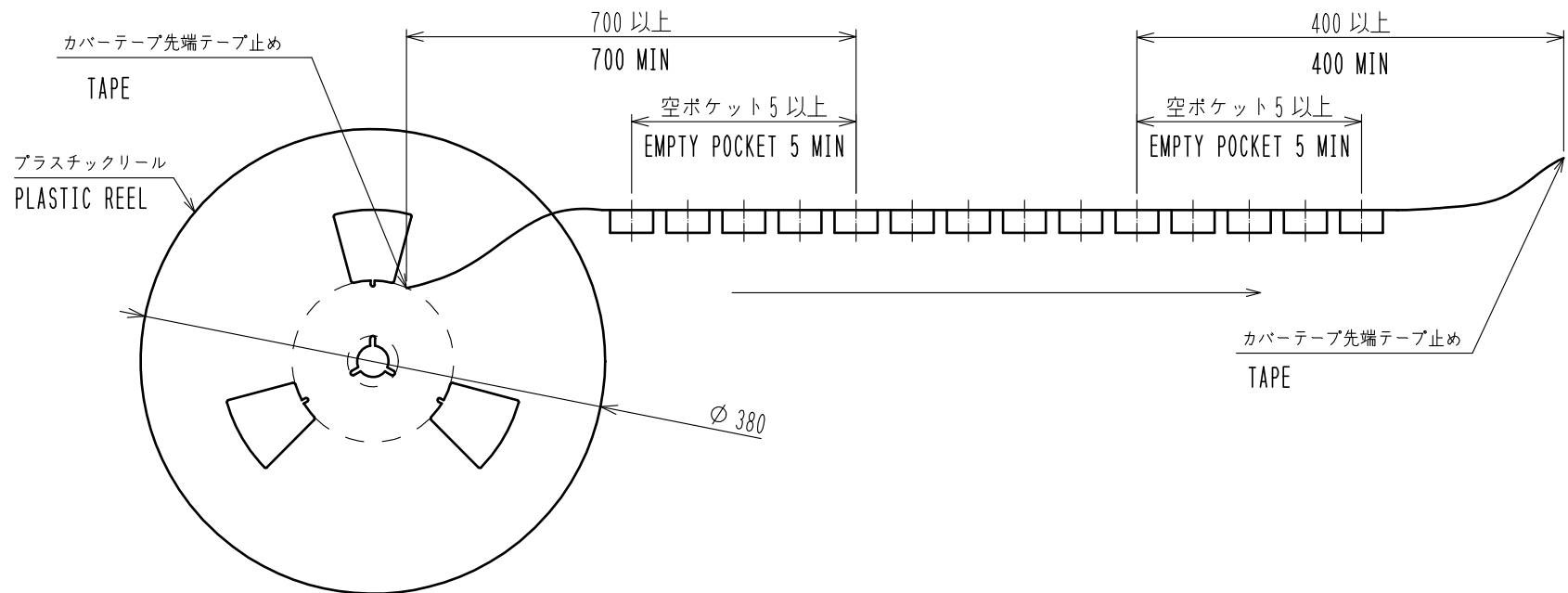
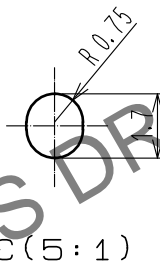
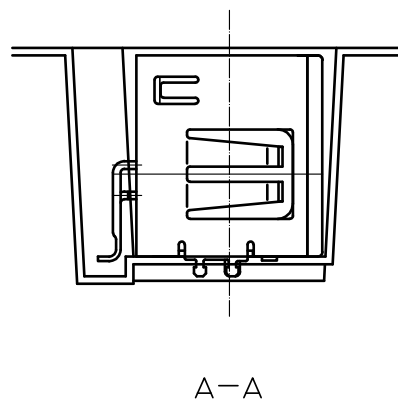
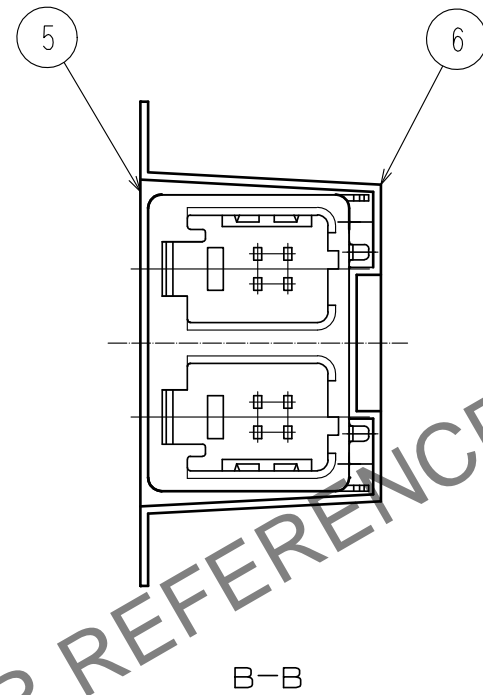
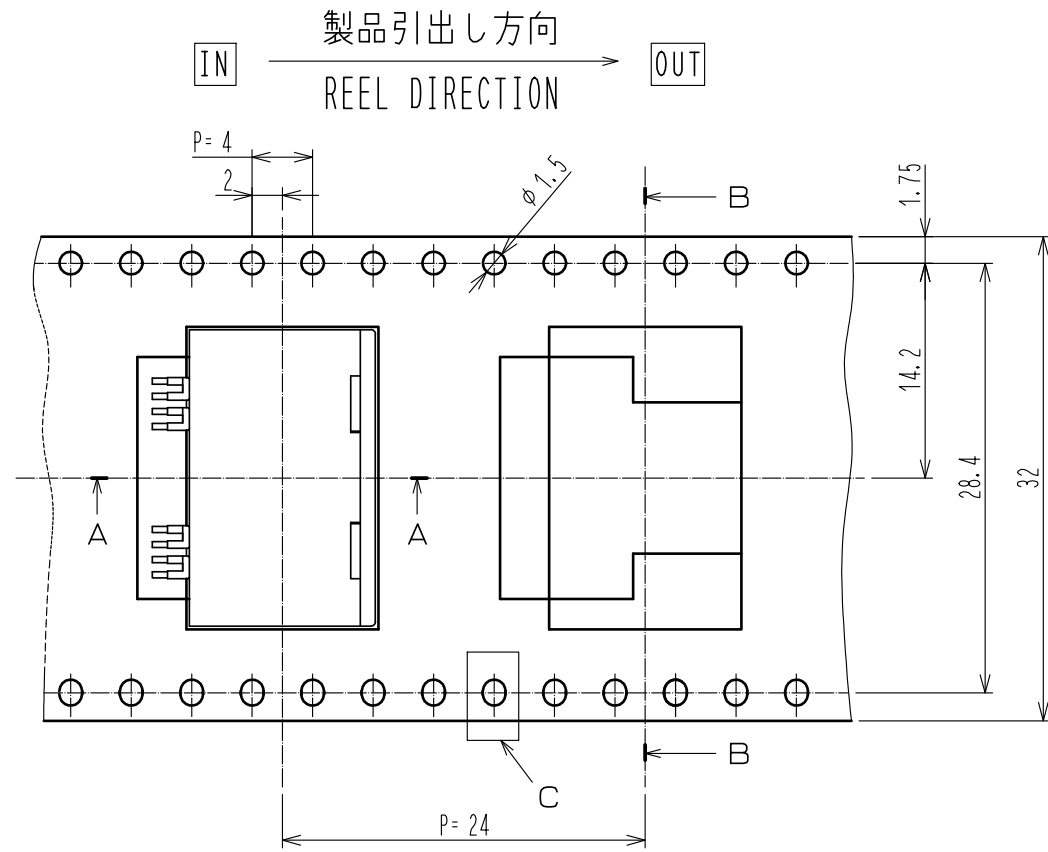
基板推奨寸法図
RECOMMENDED PCB LAYOUT

パネル寸法図
RECOMMENDED PANNEL LAYOUT

3	BRASS	TIN PLATING	6	PS	
2	PPS	LIGHT GRAY	5	PS	
1	COPPER ALLOY	TIN PLATING	4	BRASS	TIN PLATING
NO.	MATERIAL	FINISH . REMARKS	NO.	MATERIAL	FINISH . REMARKS
UNITS	\odot \triangle	SCALE	COUNT	DESCRIPTION OF REVISIONS	
mm		2 : 1	1	DIS-T-00006907	
APPROVED : KI. HIROKAWA			20200331	DESIGNED	
CHECKED : E.J. WAKATSUKI			20200327	CHECKED	
DESIGNED : TS. KUBOTA			20200325	DATE	
DRAWN : YK. MITSUISHI			20200313	KK. FURUKAWA	
HRS HIROSE ELECTRIC CO., LTD.			DRAWING NO.		ADC-166814-57-00
			PART NO.		GT17HN-4/4DP-2H(BC)(57)
			CODE NO.		CL767-0145-9-57
					1/2

Oct. 1, 2024 Copyright 2024 HIROSE ELECTRIC CO., LTD. All Rights Reserved. 本製品を車載用途などの高い信頼性が求められる機器にご使用の場合は、弊社までお問合せ下さい。

Oct. 1.2024 Copyright 2024 HIROSE ELECTRIC CO., LTD. All Rights Reserved.
 本製品を車載用途などの高い信頼性が求められる機器にご使用の場合は、弊社までお問合せ下さい。



梱包仕様

- 1リール巻き数は200個とする。
- カバーテープ剥離強度は0.1~0.7N範囲であること。

Package style

1. 200 PCS. / REEL
2. TOP COVER TAPE PEEL FORCE TO BE 0.1 TO 0.7 N AFTER SEALING.

HRS	DRAWING NO.	ADC-166814-57-00
	PART NO.	GT17HN-4/4DP-2H(BC)(57)
	CODE NO.	CL767-0145-9-57