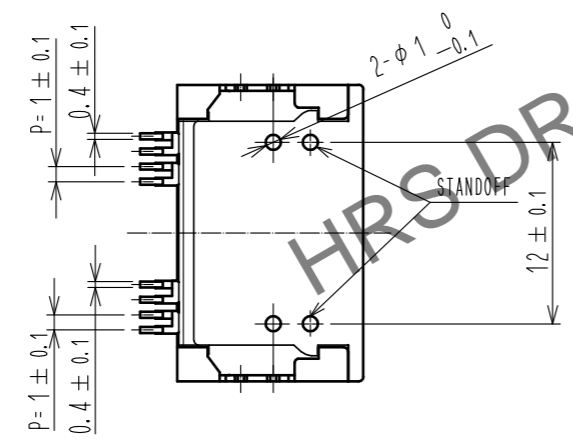
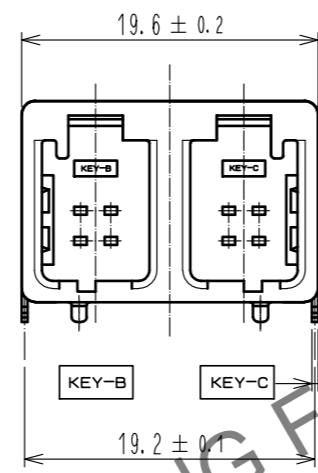
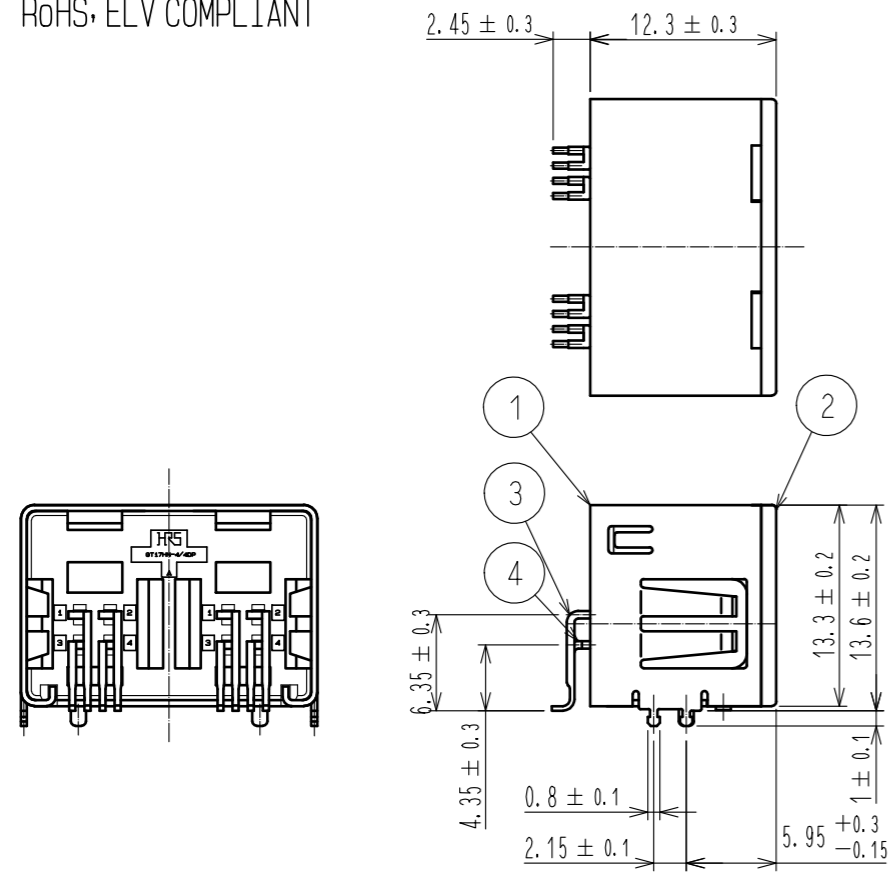


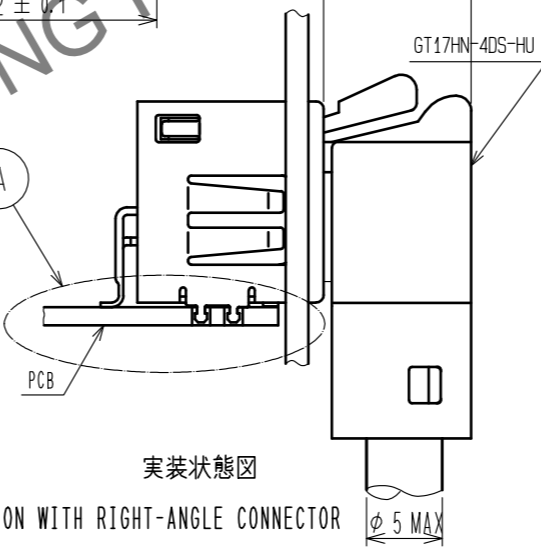
Oct.1.2024 Copyright 2024 HIROSE ELECTRIC CO., LTD. All Rights Reserved.
In case of consideration for using Automotive equipment / device which demand high reliability, kindly contact our sales window correspondents.

RoHS, ELV適合品

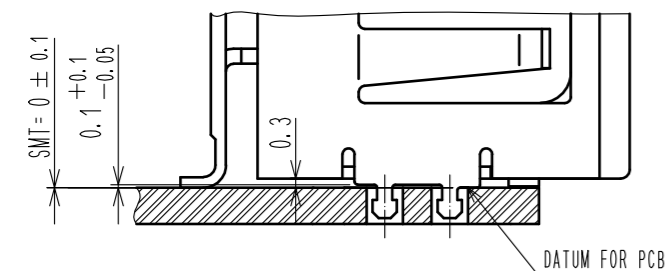
RoHS, ELV COMPLIANT



実装状態図

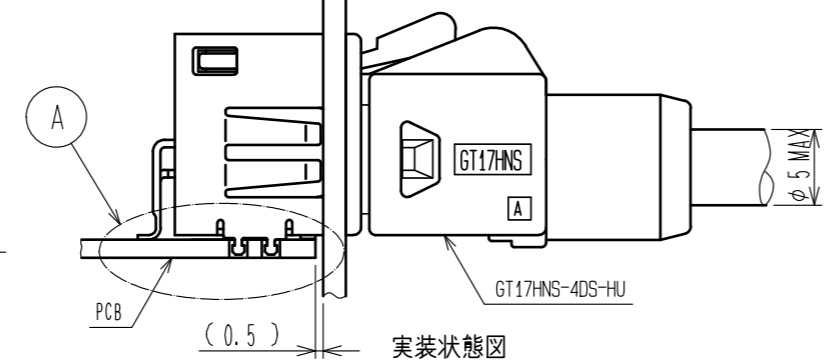


IN COMBINATION WITH RIGHT-ANGLE CONNECTOR



DATUM FOR PCB

A(4:1)

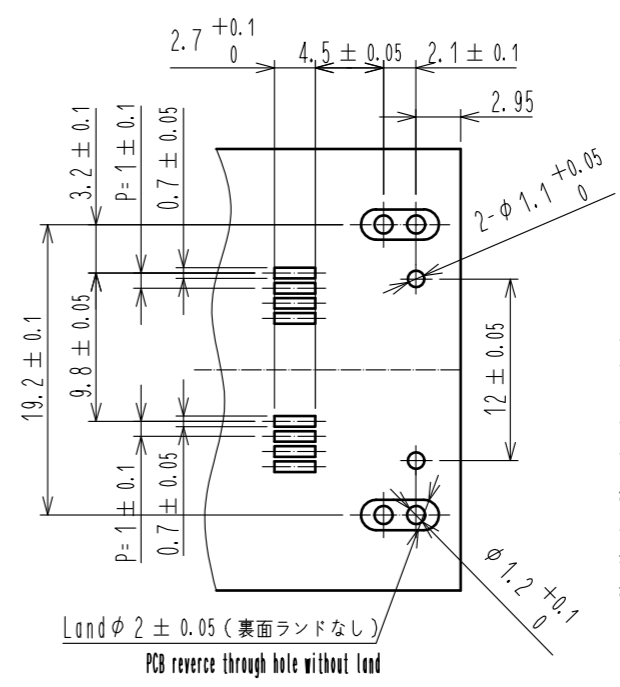
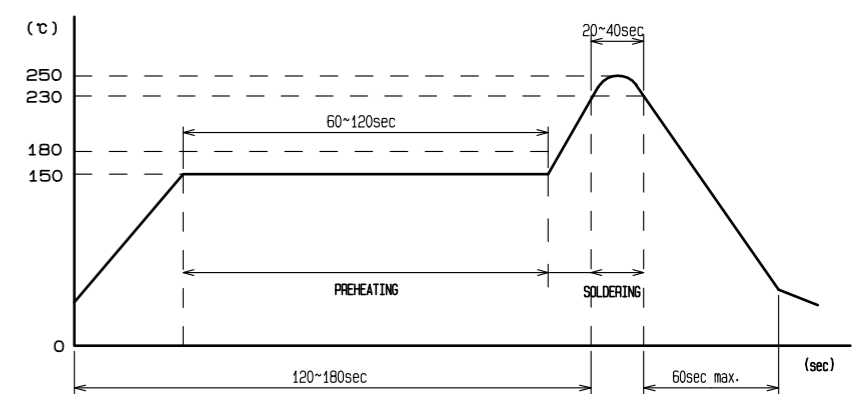


IN COMBINATION WITH STRAIGHT CONNECTOR

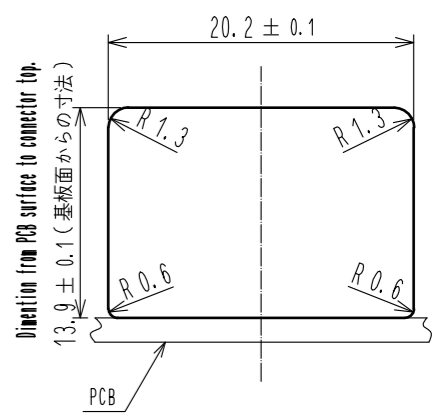
- Note1. The soldering process is allowed up to twice under the same condition. However, the interval between the first and second process must be maintained at the room temperature.
- リフロー回数: 2回。但し、2回目のリフローにおいては、一度、室温に戻すこと。
- Note2. The temperature indicates the board surface temperature on the connector lead area.
- リフロー温度の測定は、コネクタリード部の基板表面温度を測定のこと。
- Note3. Hand soldering: 280~300°C, 2s max.
- 手半田温度: 280~300°C, 2S以内
- Note4. Coplanarity: 0.1 max.
- 端子平坦度: 0.1以下
- Note5. Recommended thickness of PCB: 1.6mm
- 推奨基板厚: 1.6mm
- Note6. For the prevention excessive stress for connector and PCB, we recommend additional support mechanism if the flange was eliminated.
- コネクタと基板間のこじり荷重を回避するために、フランジなしの本製品は、基板固定の機械的補強を設計的に配慮願います

RECOMMENDED REFLOW PROFILE

IR reflow condition	IR リフロー条件
Preheating area 150°C for 60 to 120 seconds	予備加熱: 60~120秒, 150°C
Peak Temperature: 250°C	ピーク温度: 250°C
Soldering area 235±5°C or 10 seconds max.	リフロー温度: 230~240°C, 10秒以内
230°C min- for 20 to 40 seconds	230°C以上: 20~40秒



基板推奨寸法図
RECOMMENDED PCB LAYOUT



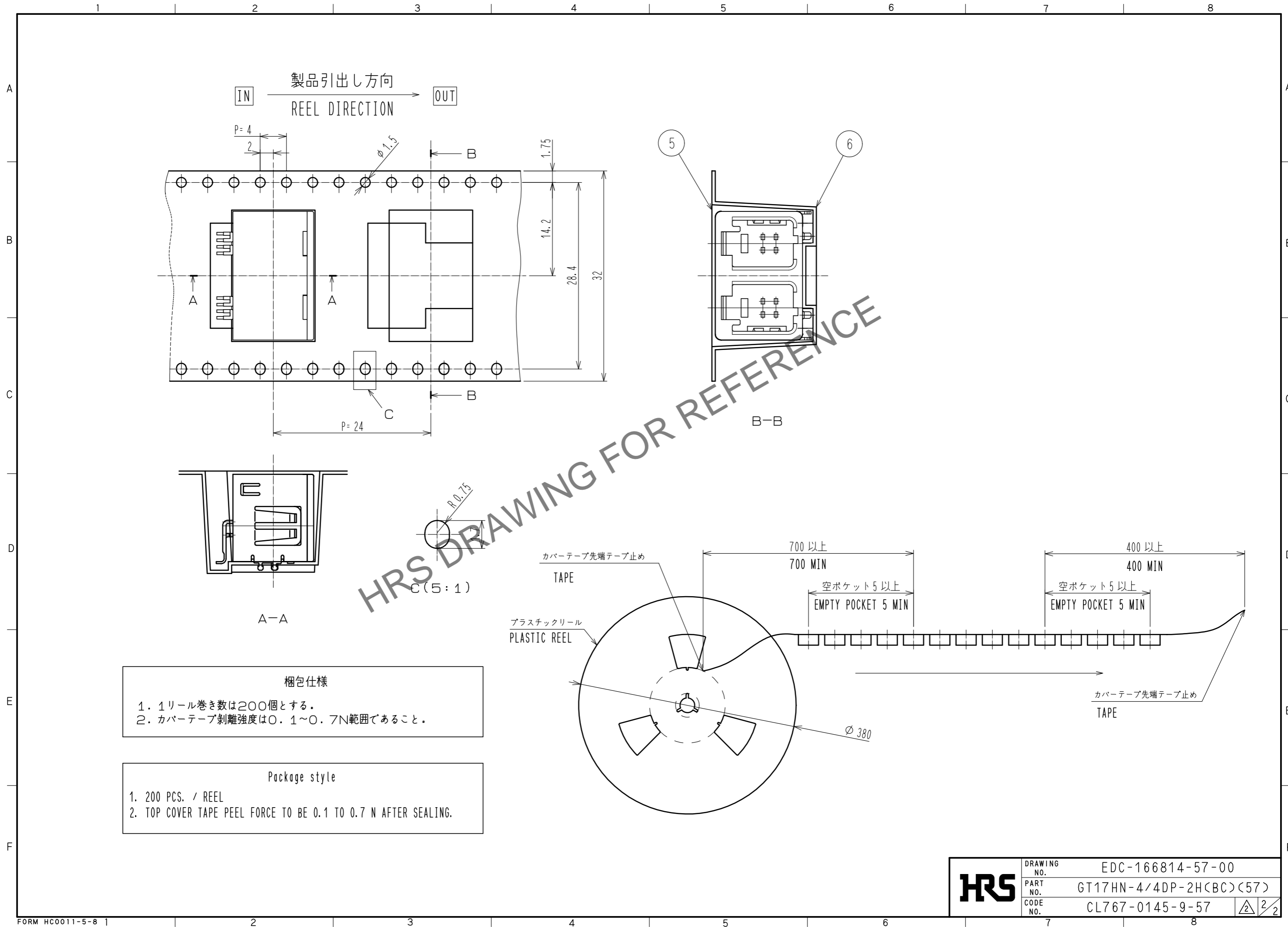
パネル寸法図
RECOMMENDED PANNEL LAYOUT

NO.	MATERIAL	FINISH	REMARKS	NO.	MATERIAL	FINISH	REMARKS
3	BRASS	TIN PLATING		6	PS		
2	PPS	LIGHT GRAY		5	PS		
1	COPPER ALLOY	TIN PLATING		4	BRASS	TIN PLATING	

UNITS	SCALE	COUNT	DESCRIPTION OF REVISIONS	DESIGNED	CHECKED	DATE
mm	2:1	1	DIS-T-00006907	KK. FURUKAWA	EJ. WAKATSUKI	20201027

APPROVED	DATE	DRAWING NO.
•KI. HIROKAWA	20200331	EDC-166814-57-00
•EJ. WAKATSUKI	20200327	PART NO. GT17HN-4/4DP-2H(BC)(57)
•TS. KUBOTA	20200325	CODE NO. CL767-0145-9-57
•YK. MITSUISHI	20200313	

Oct. 1.2024 Copyright 2024 HIROSE ELECTRIC CO., LTD. All Rights Reserved.
 In case of consideration for using Automotive equipment / device which demand high reliability, kindly contact our sales window correspondents.



梱包仕様

1. 1リール巻き数は200個とする。
2. カバートープ剥離強度は0.1~0.7N範囲であること。

Package style

1. 200 PCS. / REEL
2. TOP COVER TAPE PEEL FORCE TO BE 0.1 TO 0.7 N AFTER SEALING.

HRS	DRAWING NO.	EDC-166814-57-00
	PART NO.	GT17HN-4/4DP-2H(BC)(57)
	CODE NO.	CL767-0145-9-57
		2/2