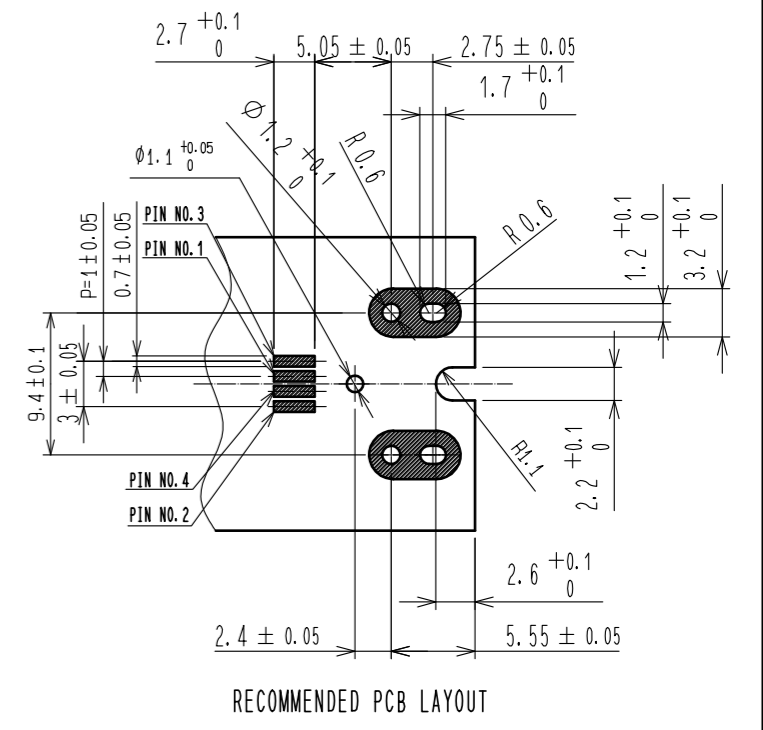
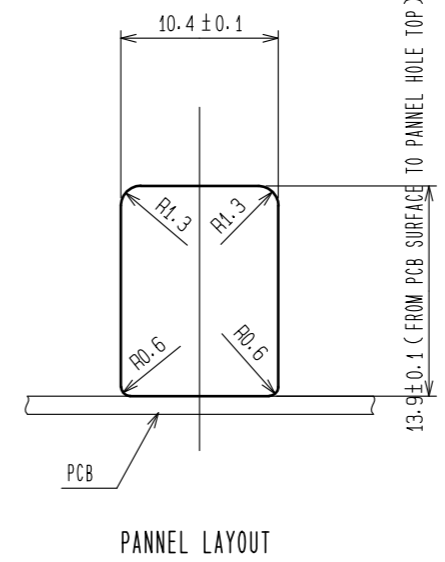
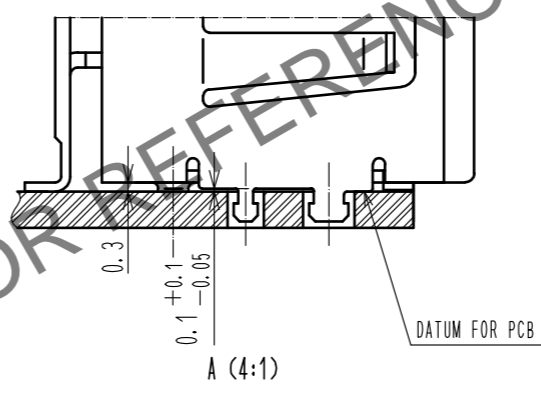
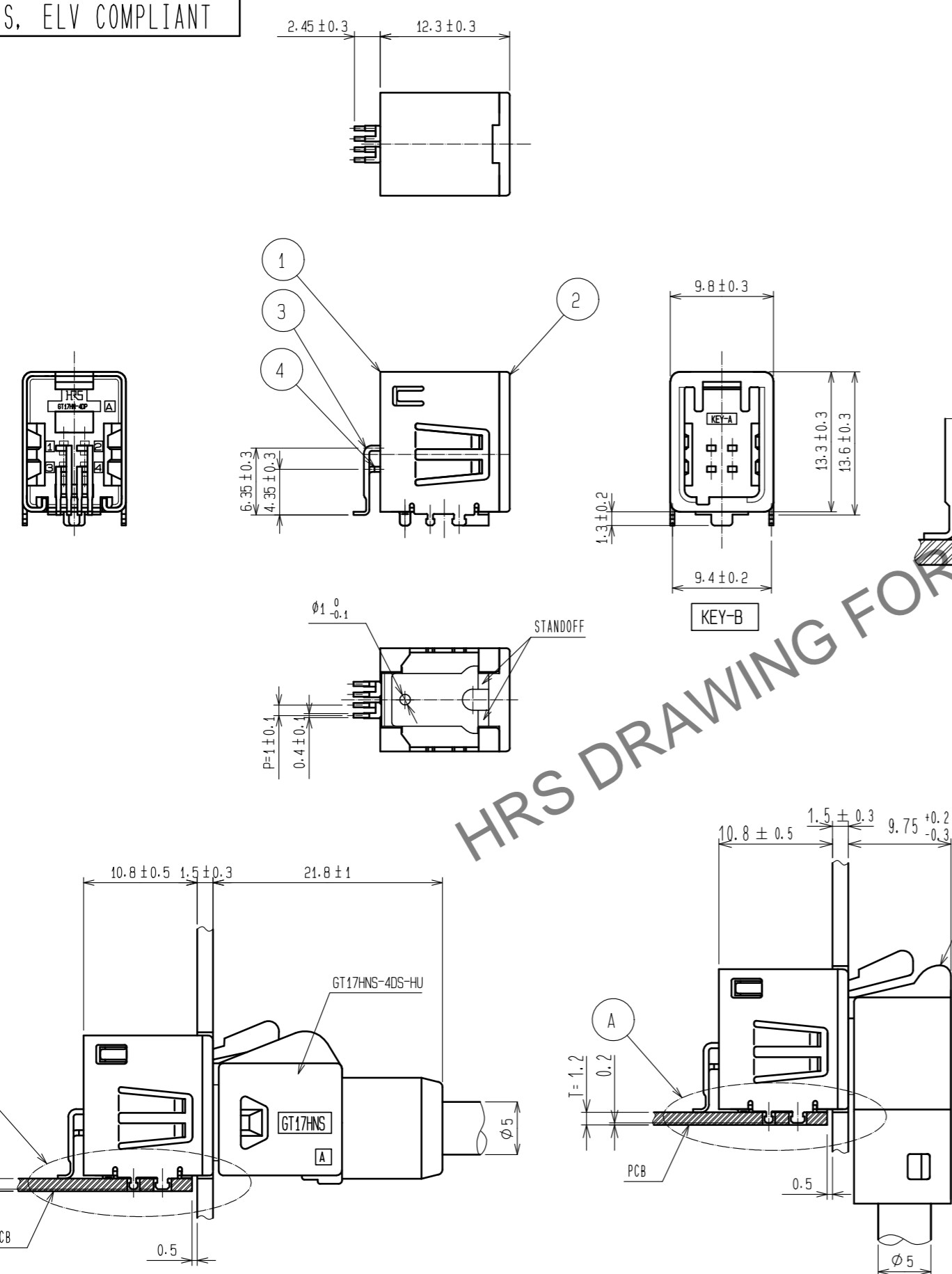
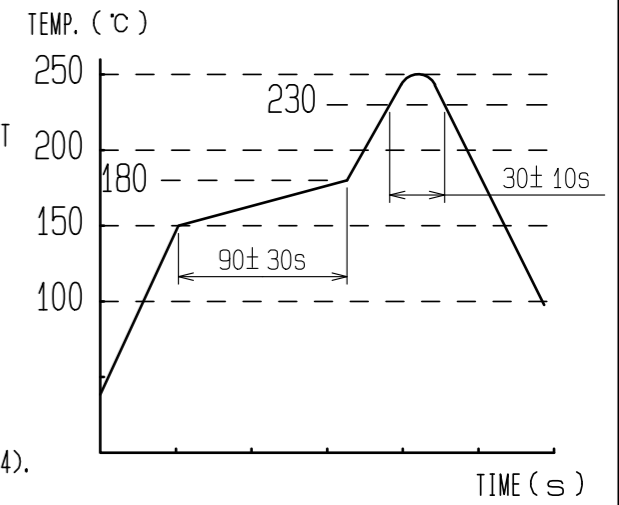


Aug.1.2024 Copyright 2024 HIROSE ELECTRIC CO., LTD. All Rights Reserved.
 In case of consideration for using Automotive equipment / device which demand high reliability, kindly contact our sales window correspondents.

RoHS, ELV COMPLIANT

NOTES

- 1) RECOMMENDED REFLOW PROFILE (SEE RIGHT GRAPH)
 CYCLE TIME: UP TO 2 CYCLES OF REFLOW SOLDERING ARE POSSIBLE UNDER THE CONDITIONS, PROVIDED THAT THERE IS A RETURN TO NORMAL TEMPERATURE BETWEEN THE FIRST AND SECOND CYCLE.
 PEAK TEMPERATURE: 250°C
 230°C MIN. FOR 20 TO 40 SECONDS.
 PREHEATING AREA 150 TO 180 °C FOR 60 TO 120 SECONDS.
- 2) HAND SOLDERING: 280-300°C, 2S MAX.
- 3) CONTACT COPLANARITY: 0.1mm MAX.
- 4) RECOMMENDED THICKNESS OF PCB: 1.2mm
- 5) RECOMMENDED THICKNESS OF SOLDERING PASTE: 0.12mm
- 6) THIS PRODUCT CAN REPLACE CL767-0144-6-14 GT17HN-4DP-2H(A)(14).

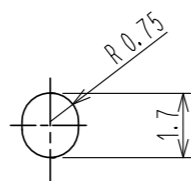
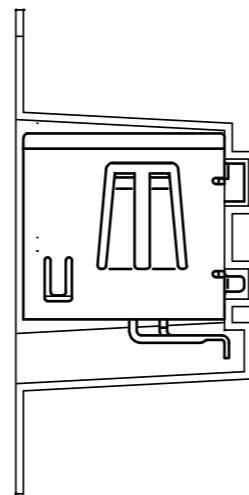
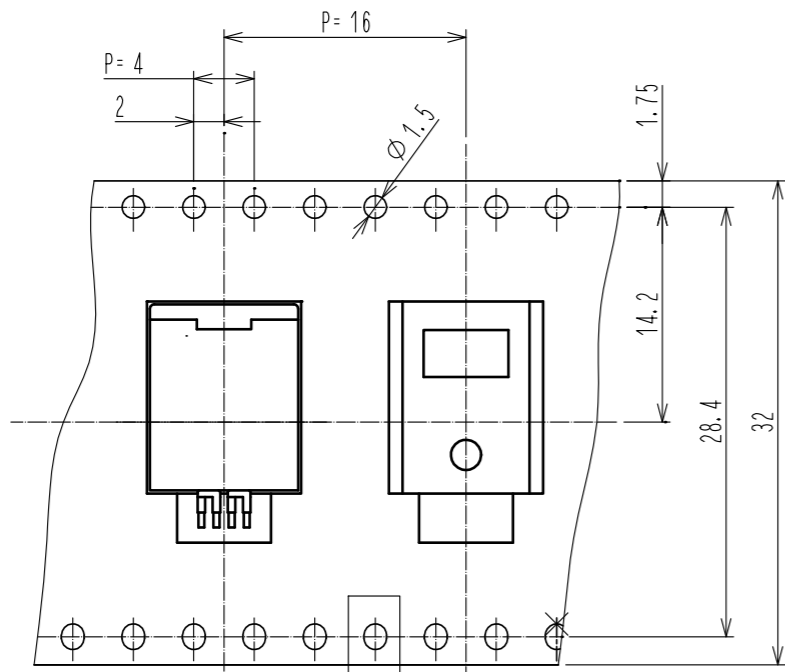


2	PA	BROWN	4	BRASS	TIN PLATING		
1	COPPER ALLOY	TIN PLATING	3	BRASS	TIN PLATING		
NO.	MATERIAL	FINISH . REMARKS	NO.	MATERIAL	FINISH . REMARKS		
UNITS		SCALE	COUNT	DESCRIPTION OF REVISIONS	DESIGNED	CHECKED	DATE
mm		2 : 1					
APPROVED : KI. HIROKAWA 20200409				DRAWING NO. EDC-168892-58-00			
CHECKED : E.J. WAKATSUKI 20200408				PART NO. GT17HN2-4DP-2H(A)(58)			
DESIGNED : TS. KUBOTA 20200325				CODE NO. CL767-0267-6-58			
DRAWN : YK. MITSUISHI 20200319							

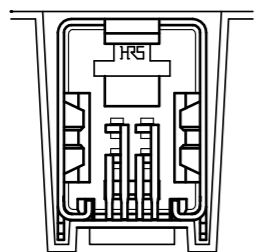
In case of consideration for using Automotive equipment / device which demand high reliability, kindly contact our sales window correspondents.

Aug.1.2024 Copyright 2024 HIROSE ELECTRIC CO., LTD. All Rights Reserved.

REEL DIRECTION

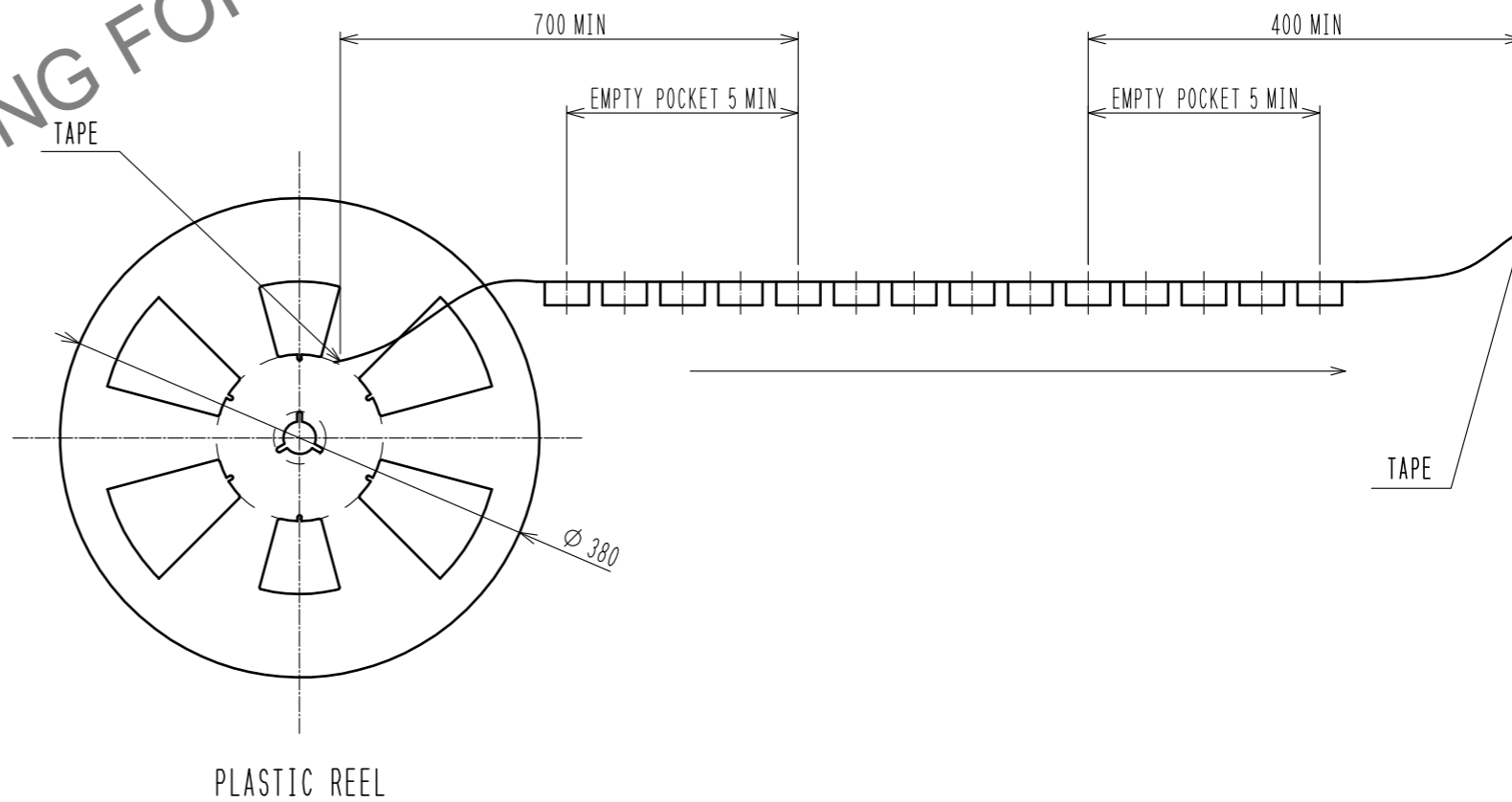


C (5 : 1)



PACKAGE STYLE
300PCS/REEL

HRS DRAWING FOR REFERENCE



HRS	DRAWING NO.	EDC-168892-58-00	
	PART NO.	GT17HN2-4DP-2H(A)(58)	
	CODE NO.	CL767-0267-6-58	