

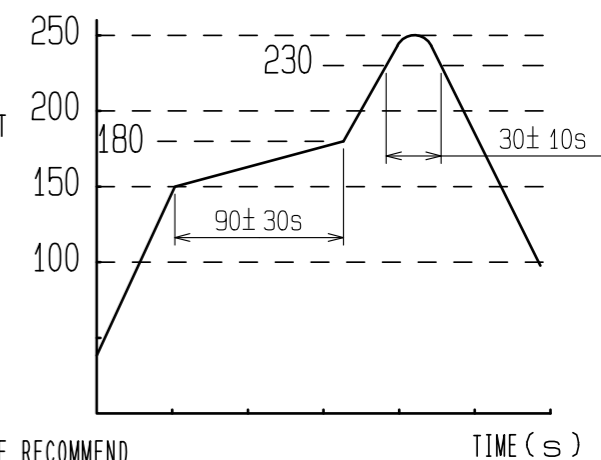
Aug.1.2024 Copyright 2024 HIROSE ELECTRIC CO., LTD. All Rights Reserved.
In case of consideration for using Automotive equipment / device which demand high reliability, kindly contact our sales window correspondents.

RoHS, ELV COMPLIANT

NOTES

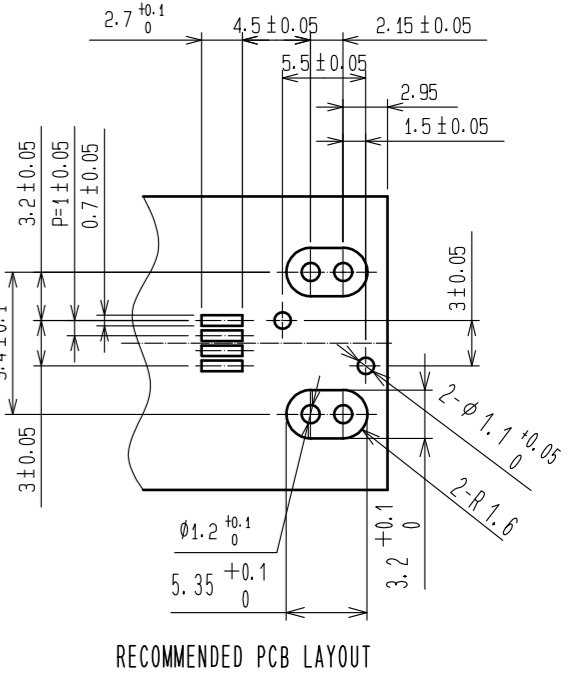
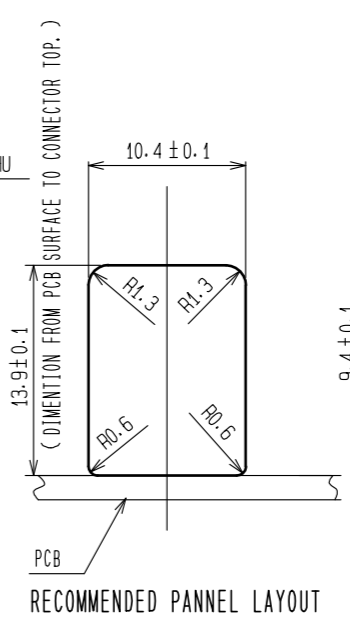
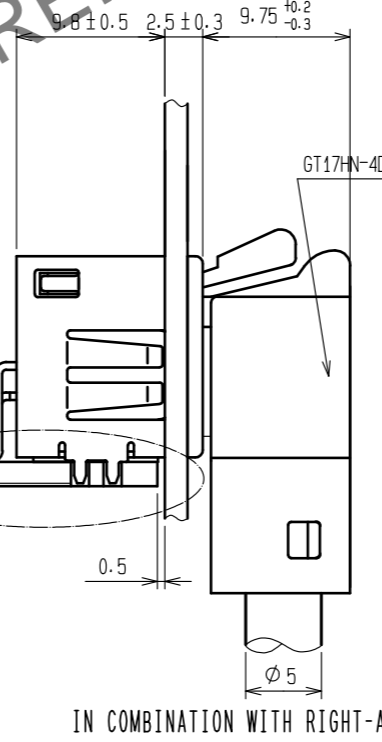
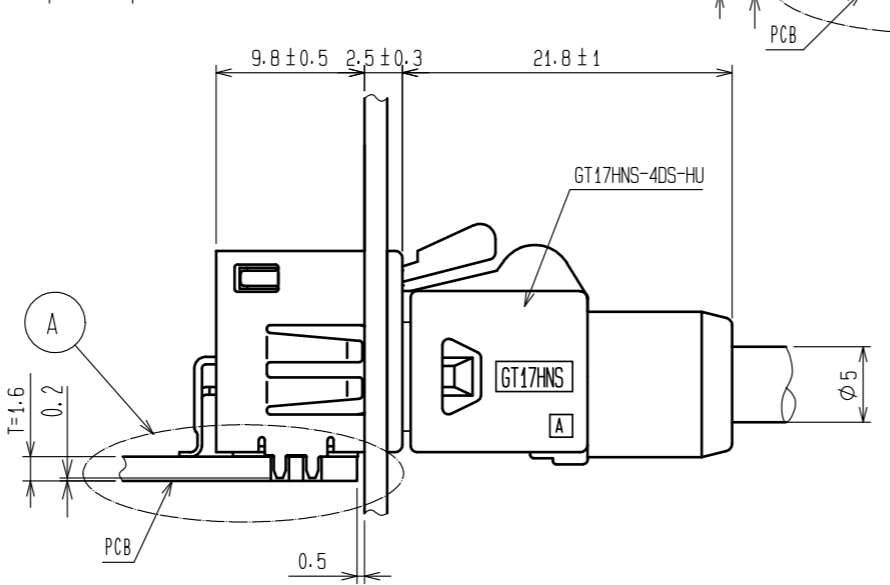
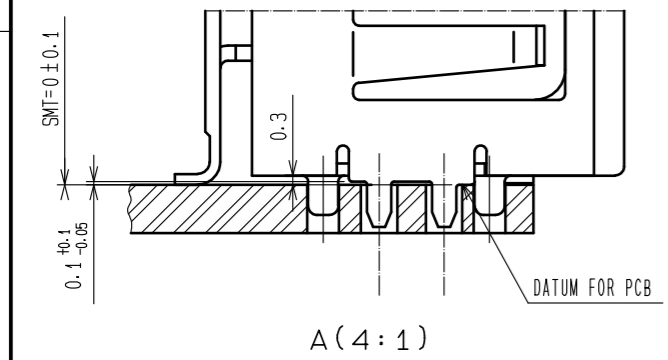
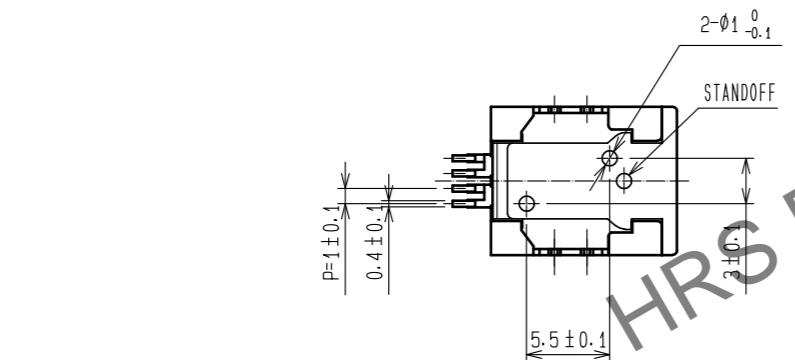
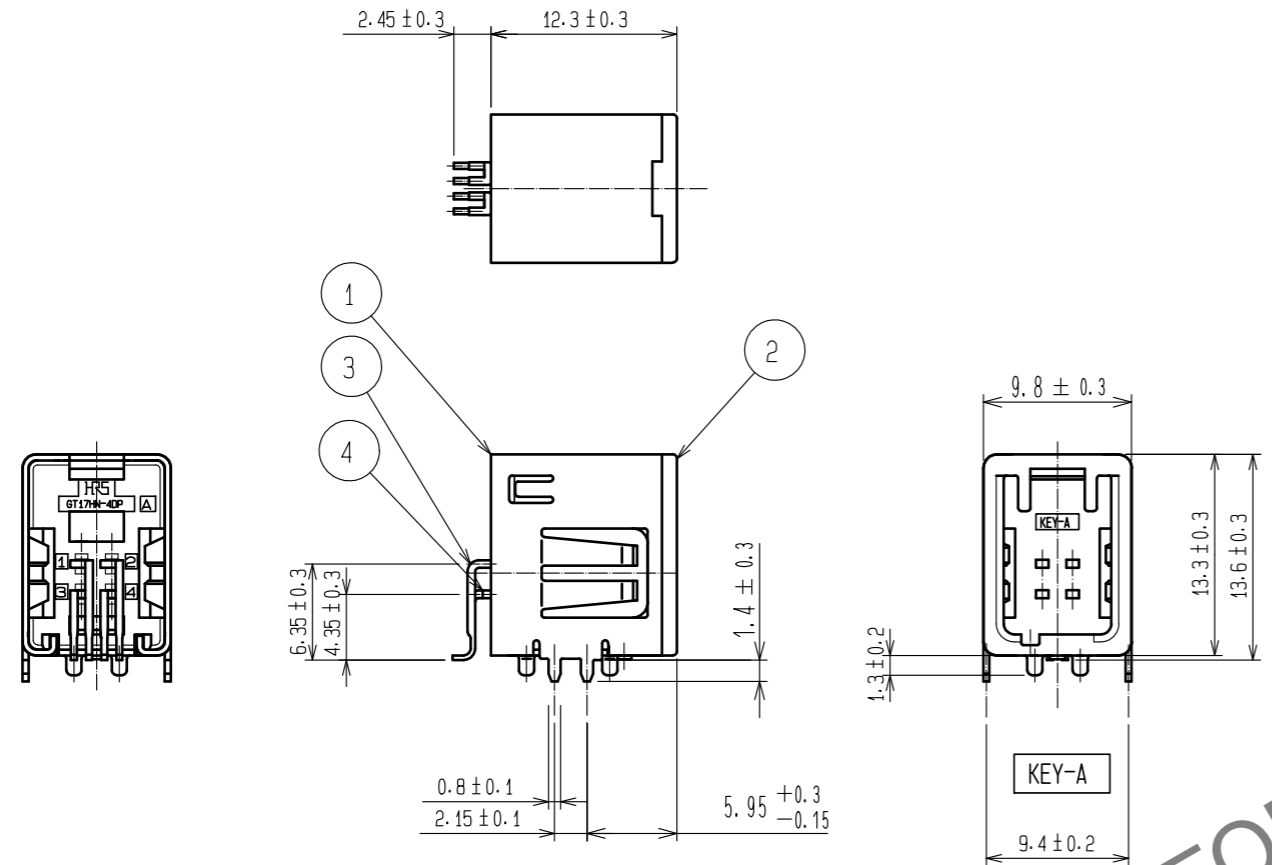
- 1) RECOMMENDED REFLOW PROFILE (SEE RIGHT GRAPH)
CYCLE TIME: UP TO 2 CYCLES OF REFLOW SOLDERING ARE POSSIBLE UNDER THE CONDITIONS, PROVIDED THAT THERE IS A RETURN TO NORMAL TEMPERATURE BETWEEN THE FIRST AND SECOND CYCLE.
PEAK TEMPERATURE: 250°C
230°C MIN. FOR 20 TO 40 SECONDS.
PREHEATING AREA 150 TO 180 °C FOR 60 TO 120 SECONDS.
- 2) HAND SOLDERING: 280-300°C, 2S MAX.
- 3) CONTACT COPLANARITY: 0.1mm MAX.
- 4) RECOMMENDED THICKNESS OF PCB: 1.6mm
- 5) RECOMMENDED THICKNESS OF SOLDERING PASTE: 0.12mm
- 6) FOR THE PREVENTION EXCESSIVE STRESS FOR CONNECTOR AND PCB, WE RECOMMEND ADDITIONAL SUPPORT MECHANISM IF THE FLANGE WAS ELIMINATED.

TEMP. (°C)



A
B
C
D
E
F

A
B
C
D
E
F

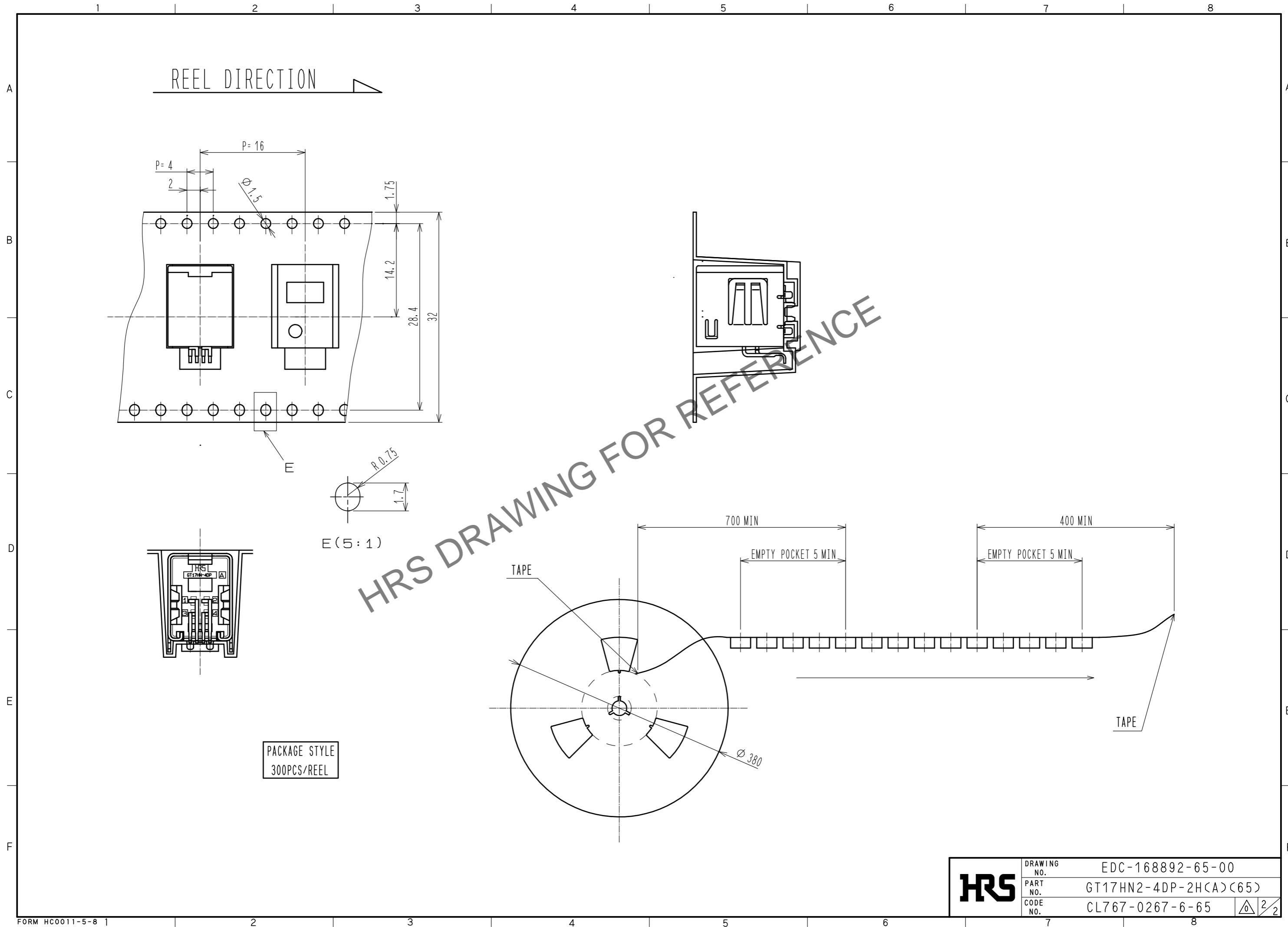


IN COMBINATION WITH RIGHT-ANGLE CONNECTOR

IN COMBINATION WITH STRAIGHT CONNECTOR

2	PA	BROWN	4	BRASS	TIN PLATING
1	COPPER ALLOY	TIN PLATING	3	BRASS	TIN PLATING
NO.	MATERIAL	FINISH . REMARKS	NO.	MATERIAL	FINISH . REMARKS
UNITS	mm	SCALE	2 : 1	COUNT	DESCRIPTION OF REVISIONS
		DESIGNED	DATE		
		CHECKED	DATE		
		DESIGNED	DATE		
		DRAWN	DATE		
APPROVED : KI. HIROKAWA			20200409		
CHECKED : E.J. WAKATSUKI			20200408		
DESIGNED : TS. KUBOTA			20200325		
DRAWN : YK. MITSUISHI			20200319		
DRAWING NO.			EDC-168892-65-00		
PART NO.			GT17HN2-4DP-2H(A)(65)		
CODE NO.			CL767-0267-6-65		

Aug.1.2024 Copyright 2024 HIROSE ELECTRIC CO., LTD. All Rights Reserved.
In case of consideration for using Automotive equipment / device which demand high reliability, kindly contact our sales window correspondents.



HRS	DRAWING NO.	EDC-168892-65-00
	PART NO.	GT17HN2-4DP-2H(A)(65)
	CODE NO.	CL767-0267-6-65
		2/2