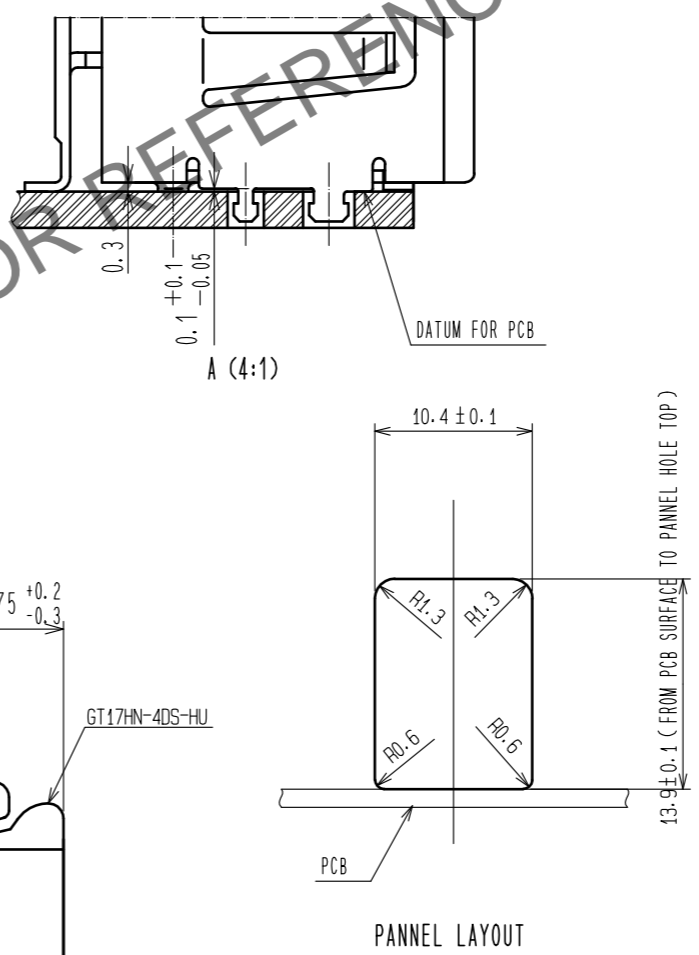
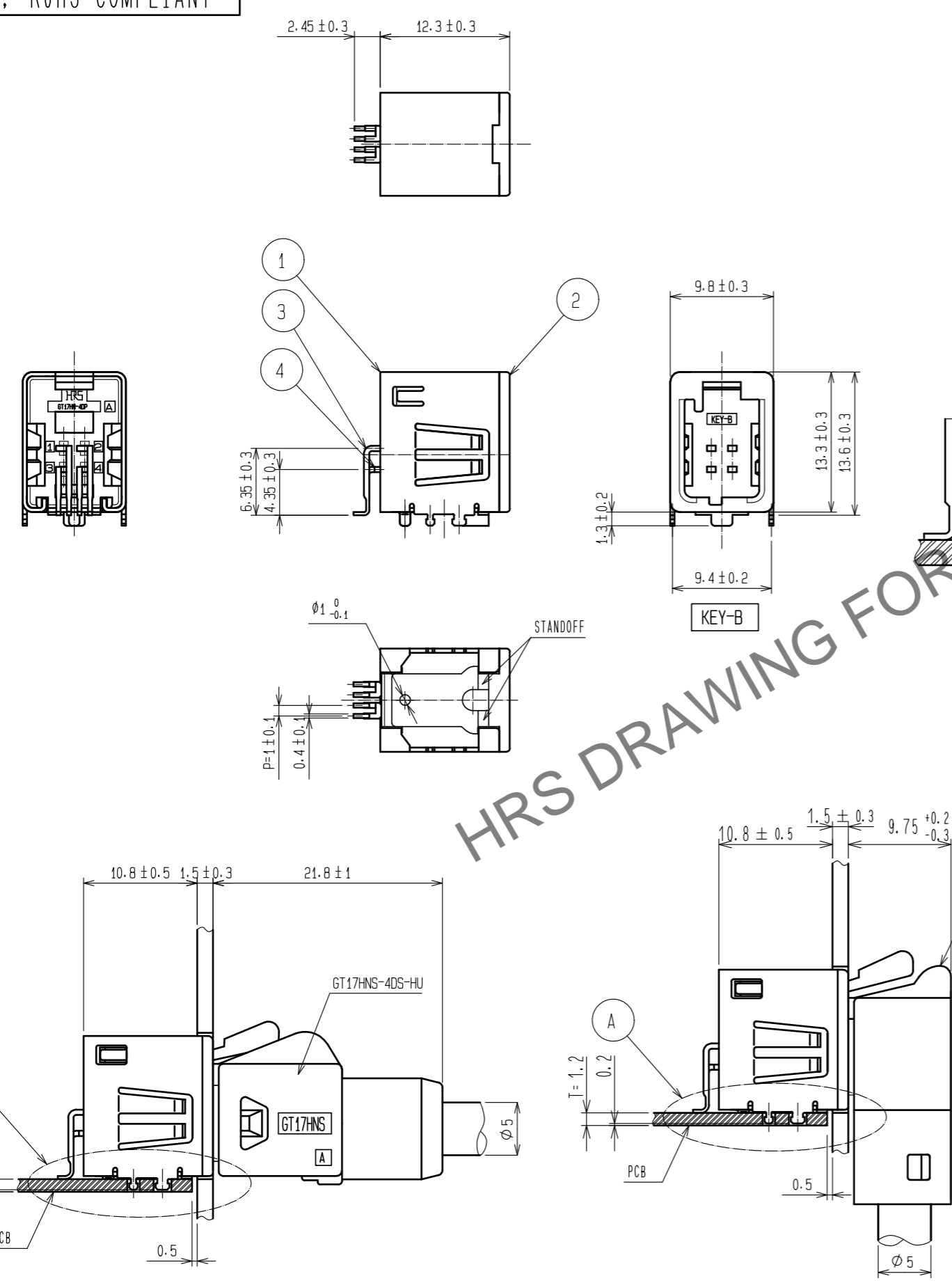
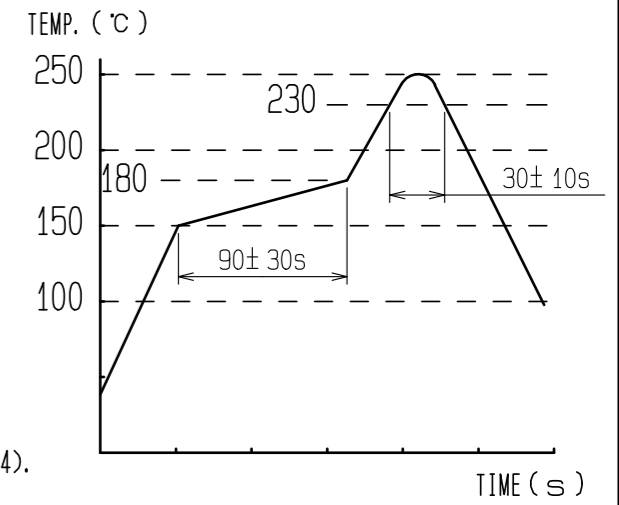


Aug.1.2024 Copyright 2024 HIROSE ELECTRIC CO., LTD. All Rights Reserved.
 In case of consideration for using Automotive equipment / device which demand high reliability, kindly contact our sales window correspondents.

ELV, RoHS COMPLIANT

NOTES

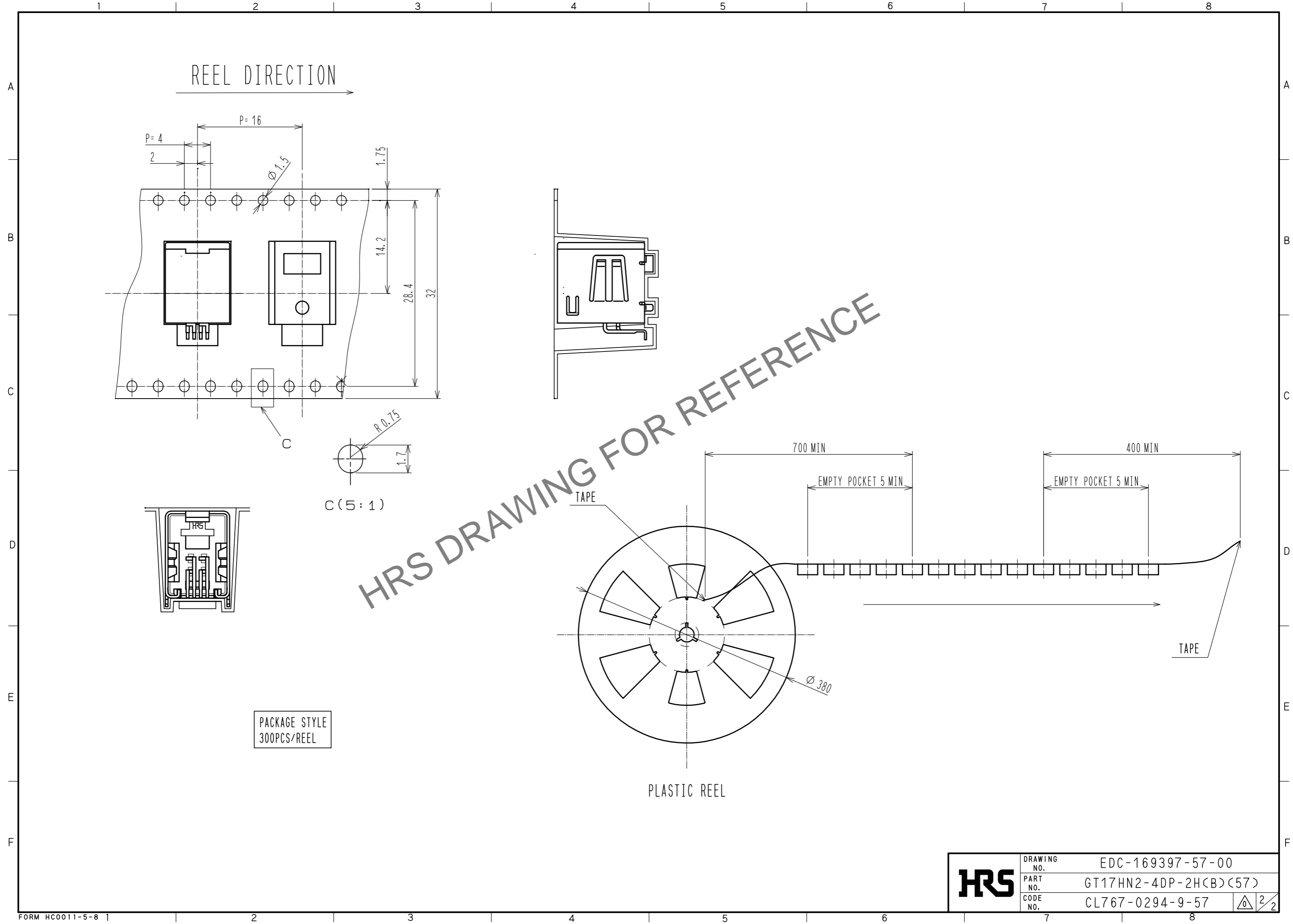
- 1) RECOMMENDED REFLOW PROFILE (SEE RIGHT GRAPH)
 CYCLE TIME: UP TO 2 CYCLES OF REFLOW SOLDERING ARE POSSIBLE UNDER THE CONDITIONS, PROVIDED THAT THERE IS A RETURN TO NOMAL TEMPERATURE BETWEEN THE FIRST AND SECOND CYCLE.
 PEAK TEMPERATURE: 250°C
 230°C MIN. FOR 20 TO 40 SECONDS.
 PREHEATING AREA 150 TO 180 °C FOR 60 TO 120 SECONDS.
- 2) HAND SOLDERING: 280-300°C, 2S MAX.
- 3) CONTACT COPLANARITY: 0.1mm MAX.
- 4) RECOMMENDED THICKNESS OF PCB: 1.2mm
- 5) RECOMMENDED THICKNESS OF SOLDERING PASTE: 0.12mm
- 6) THIS PRODUCT CAN REPLACE CL767-0175-0-14 GT17HN-4DP-2H(B)(14).



2	PA	GREEN	4	BRASS	TIN PLATING
1	COPPER ALLOY	TIN PLATING	3	BRASS	TIN PLATING
NO.	MATERIAL	FINISH . REMARKS	NO.	MATERIAL	FINISH . REMARKS
UNITS	mm	SCALE	2 : 1	COUNT	DESCRIPTION OF REVISIONS
		DESIGNED	20200409	DATE	20200409
		CHECKED	20200325	DATE	20200319
		DESIGNED	20200325	DATE	20200319
		DRAWN	20200319	DATE	20200319
APPROVED : KI. HIROKAWA			DRAWING NO. EDC-169397-57-00		
CHECKED : E.J. WAKATSUKI			PART NO. GT17HN2-4DP-2H(B)(57)		
DESIGNED : TS. KUBOTA			CODE NO. CL767-0294-9-57		
DRAWN : YK. MITSUISHI			1/2		

In case of consideration for using Automotive equipment / device which demand high reliability, kindly contact our sales window correspondents.

Aug.1.2024 Copyright 2024 HIROSE ELECTRIC CO., LTD. All Rights Reserved.



PACKAGE STYLE
300PCS/REEL

HRS	DRAWING NO.	EDC-169397-57-00
	PART NO.	GT17HN2-4DP-2H(B)(57)
	CODE NO.	CL767-0294-9-57
		2/2

A
B
C
D
E
F

A
B
C
D
E
F