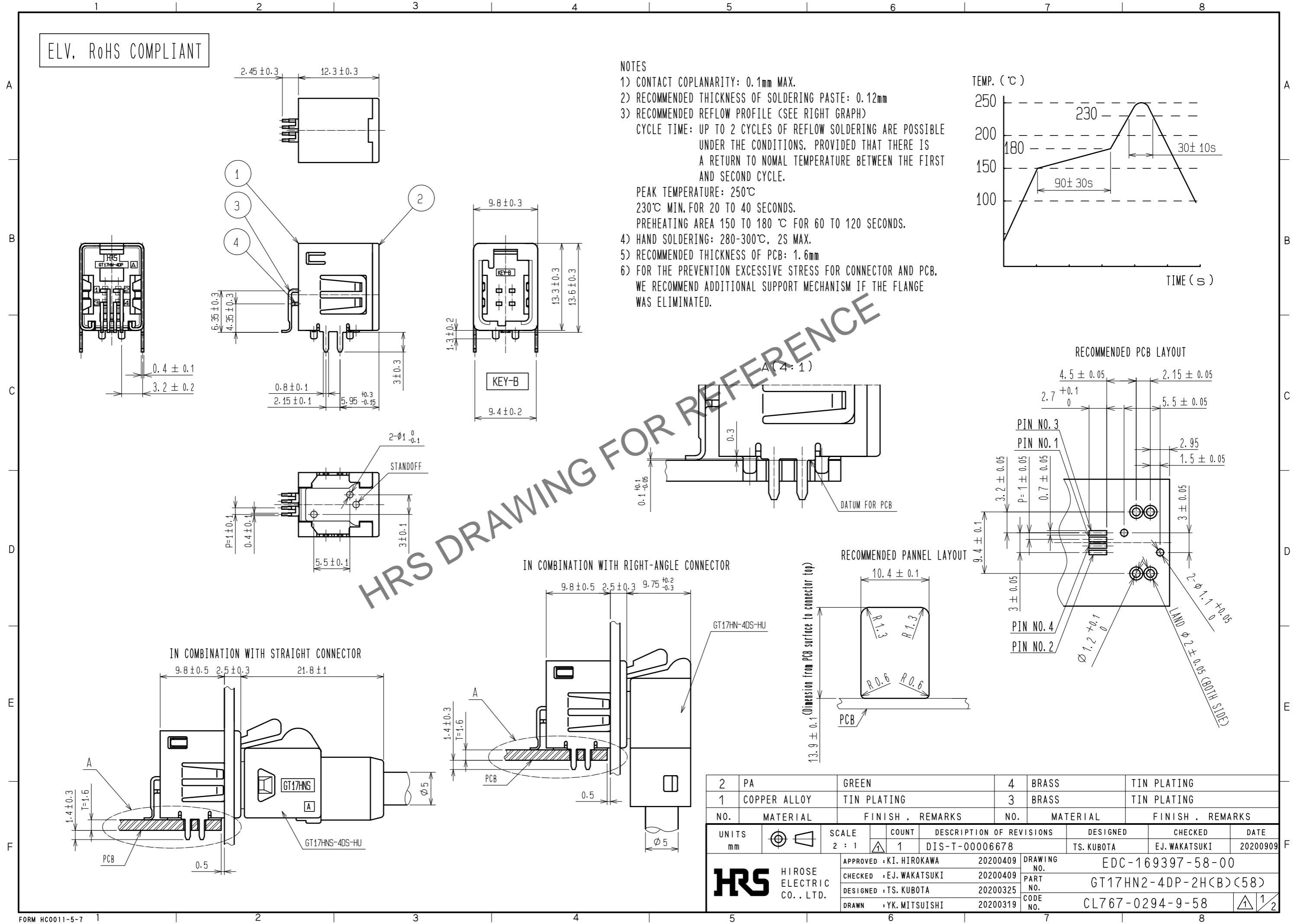
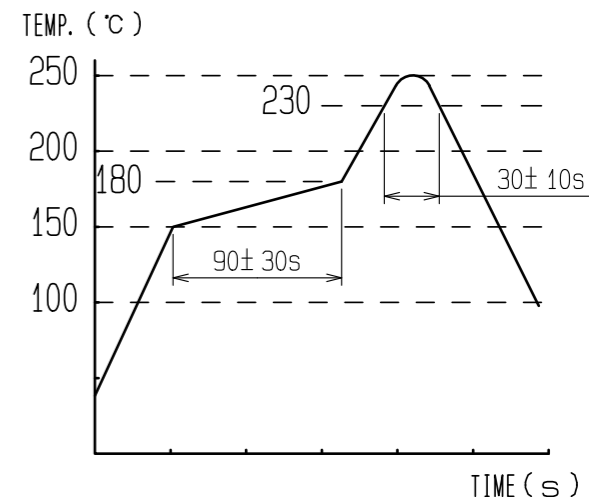


Aug.1.2024 Copyright 2024 HIROSE ELECTRIC CO., LTD. All Rights Reserved.  
 In case of consideration for using Automotive equipment / device which demand high reliability, kindly contact our sales window correspondents.

ELV, RoHS COMPLIANT

NOTES

- CONTACT COPLANARITY: 0.1mm MAX.
- RECOMMENDED THICKNESS OF SOLDERING PASTE: 0.12mm
- RECOMMENDED REFLOW PROFILE (SEE RIGHT GRAPH)  
 CYCLE TIME: UP TO 2 CYCLES OF REFLOW SOLDERING ARE POSSIBLE UNDER THE CONDITIONS, PROVIDED THAT THERE IS A RETURN TO NORMAL TEMPERATURE BETWEEN THE FIRST AND SECOND CYCLE.  
 PEAK TEMPERATURE: 250°C  
 230°C MIN. FOR 20 TO 40 SECONDS.  
 PREHEATING AREA 150 TO 180 °C FOR 60 TO 120 SECONDS.
- HAND SOLDERING: 280-300°C, 2S MAX.
- RECOMMENDED THICKNESS OF PCB: 1.6mm
- FOR THE PREVENTION EXCESSIVE STRESS FOR CONNECTOR AND PCB, WE RECOMMEND ADDITIONAL SUPPORT MECHANISM IF THE FLANGE WAS ELIMINATED.

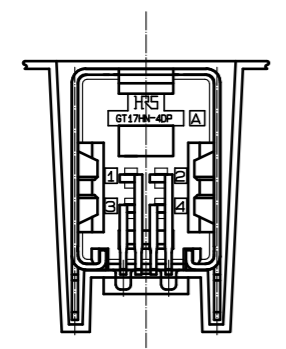
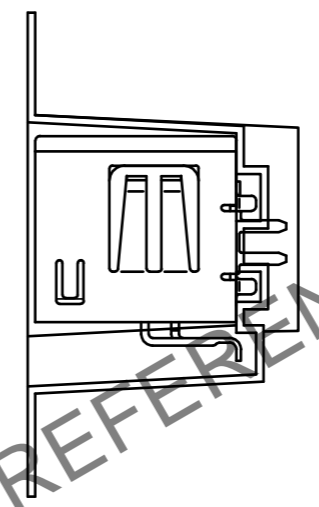
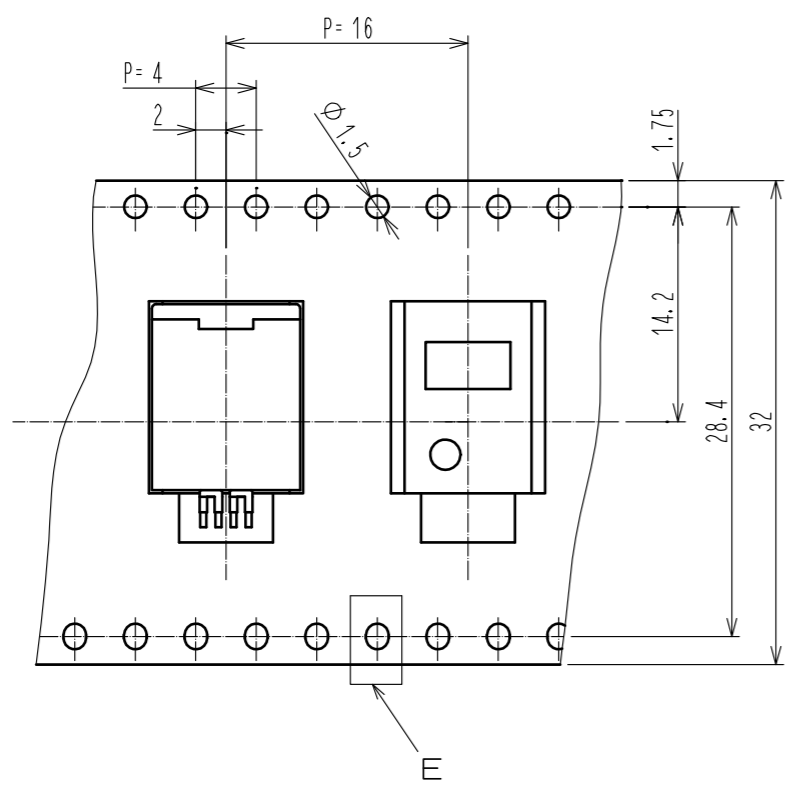


|                         |              |                  |       |                          |                                |               |          |
|-------------------------|--------------|------------------|-------|--------------------------|--------------------------------|---------------|----------|
| 2                       | PA           | GREEN            | 4     | BRASS                    | TIN PLATING                    |               |          |
| 1                       | COPPER ALLOY | TIN PLATING      | 3     | BRASS                    | TIN PLATING                    |               |          |
| NO.                     | MATERIAL     | FINISH . REMARKS | NO.   | MATERIAL                 | FINISH . REMARKS               |               |          |
| UNITS                   | mm           | SCALE            | COUNT | DESCRIPTION OF REVISIONS | DESIGNED                       | CHECKED       | DATE     |
|                         |              | 2 : 1            | 1     | DIS-T-00006678           | TS. KUBOTA                     | EJ. WAKATSUKI | 20200909 |
| APPROVED : KI. HIROKAWA |              |                  |       | 20200409                 | DRAWING NO. EDC-169397-58-00   |               |          |
| CHECKED : EJ. WAKATSUKI |              |                  |       | 20200409                 | PART NO. GT17HN2-4DP-2H(B)(58) |               |          |
| DESIGNED : TS. KUBOTA   |              |                  |       | 20200325                 | CODE NO. CL767-0294-9-58       |               |          |
| DRAWN : YK. MITSUISHI   |              |                  |       | 20200319                 |                                |               |          |

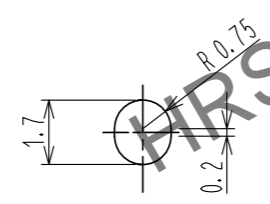
In case of consideration for using Automotive equipment / device which demand high reliability, kindly contact our sales window correspondents.

Aug.1.2024 Copyright 2024 HIROSE ELECTRIC CO., LTD. All Rights Reserved.

REEL DIRECTION 

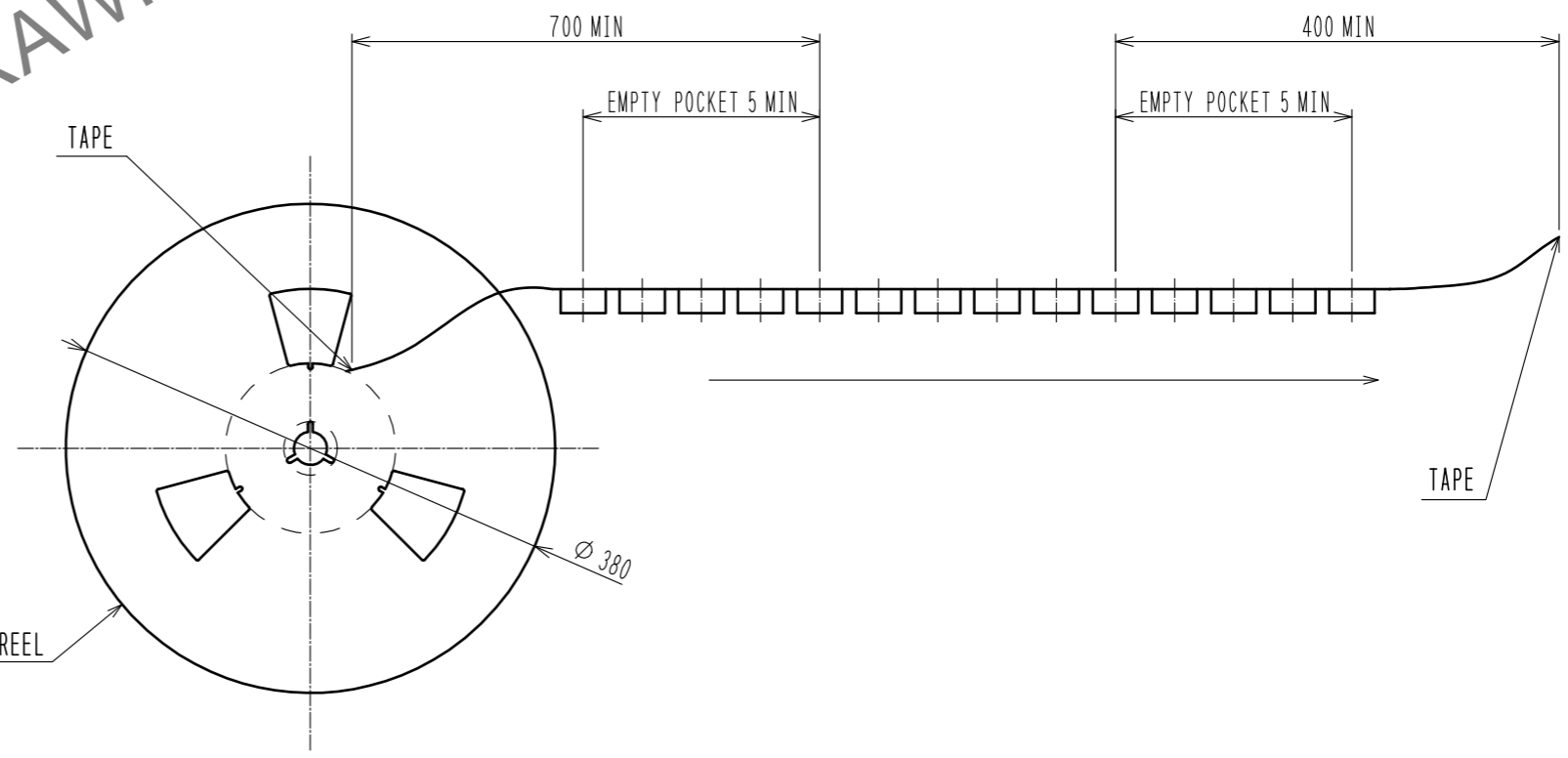


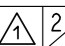
E (5:1)



PACKAGE STYLE  
300PCS/REEL

PLASTIC REEL



|            |             |                       |                                                                                           |
|------------|-------------|-----------------------|-------------------------------------------------------------------------------------------|
| <b>HRS</b> | DRAWING NO. | EDC-169397-58-00      |  2/2 |
|            | PART NO.    | GT17HN2-4DP-2H(B)(58) |                                                                                           |
|            | CODE NO.    | CL767-0294-9-58       |                                                                                           |
|            |             |                       |                                                                                           |