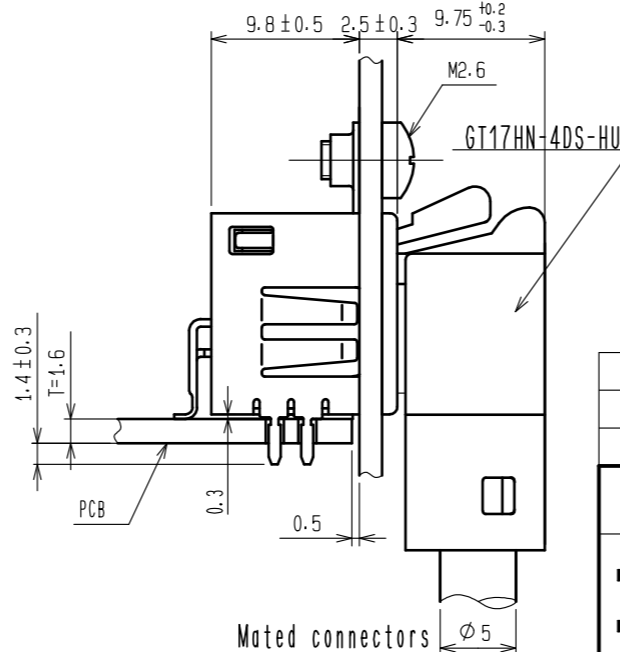
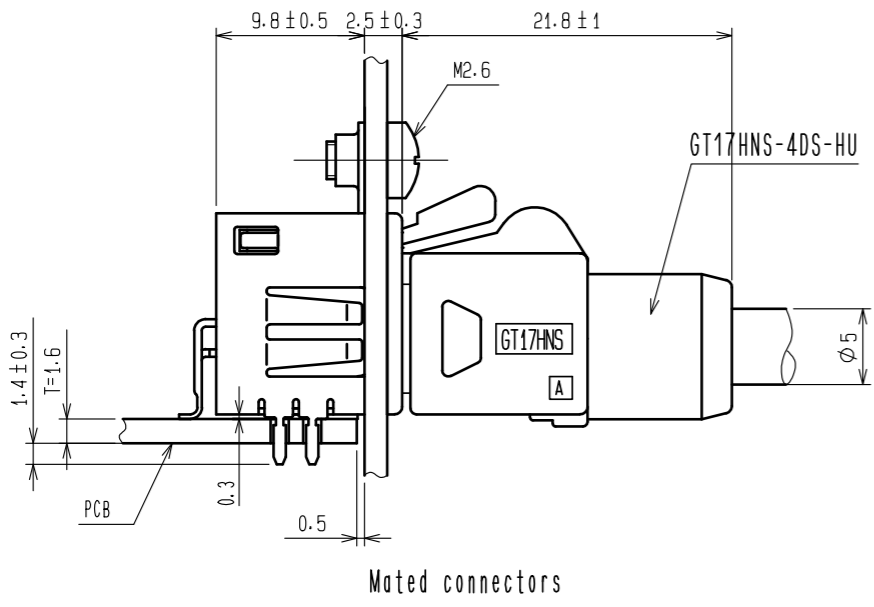
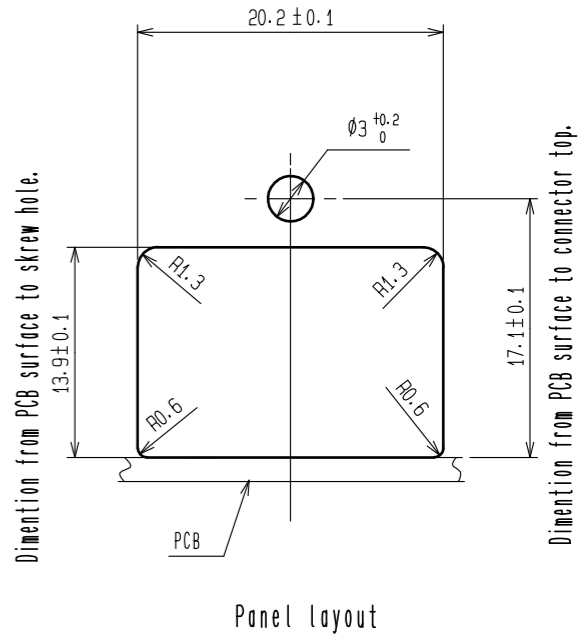
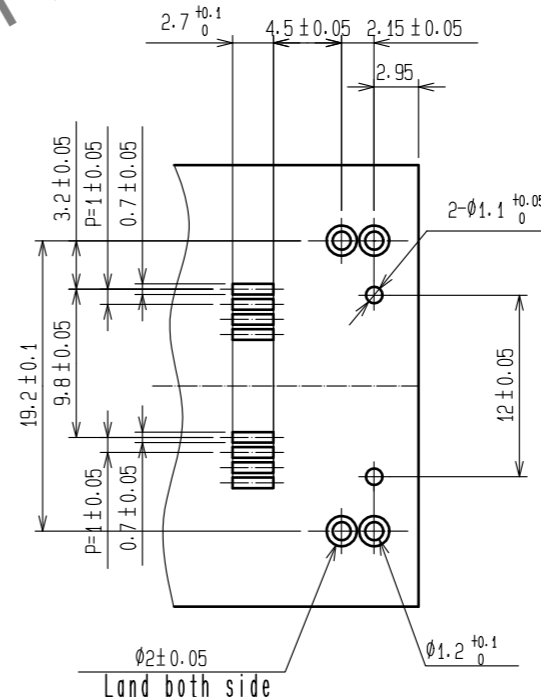
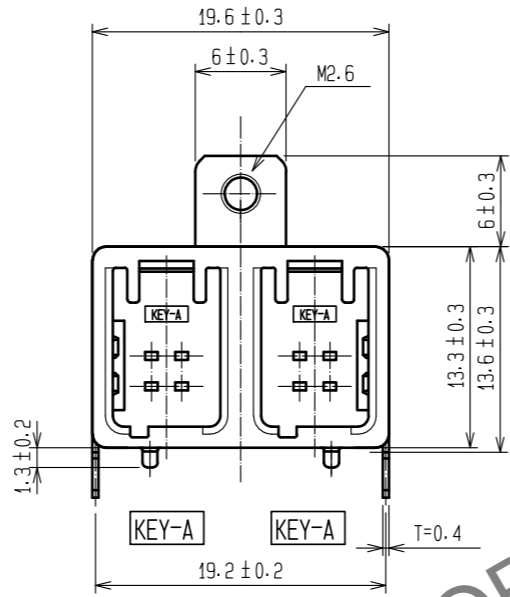
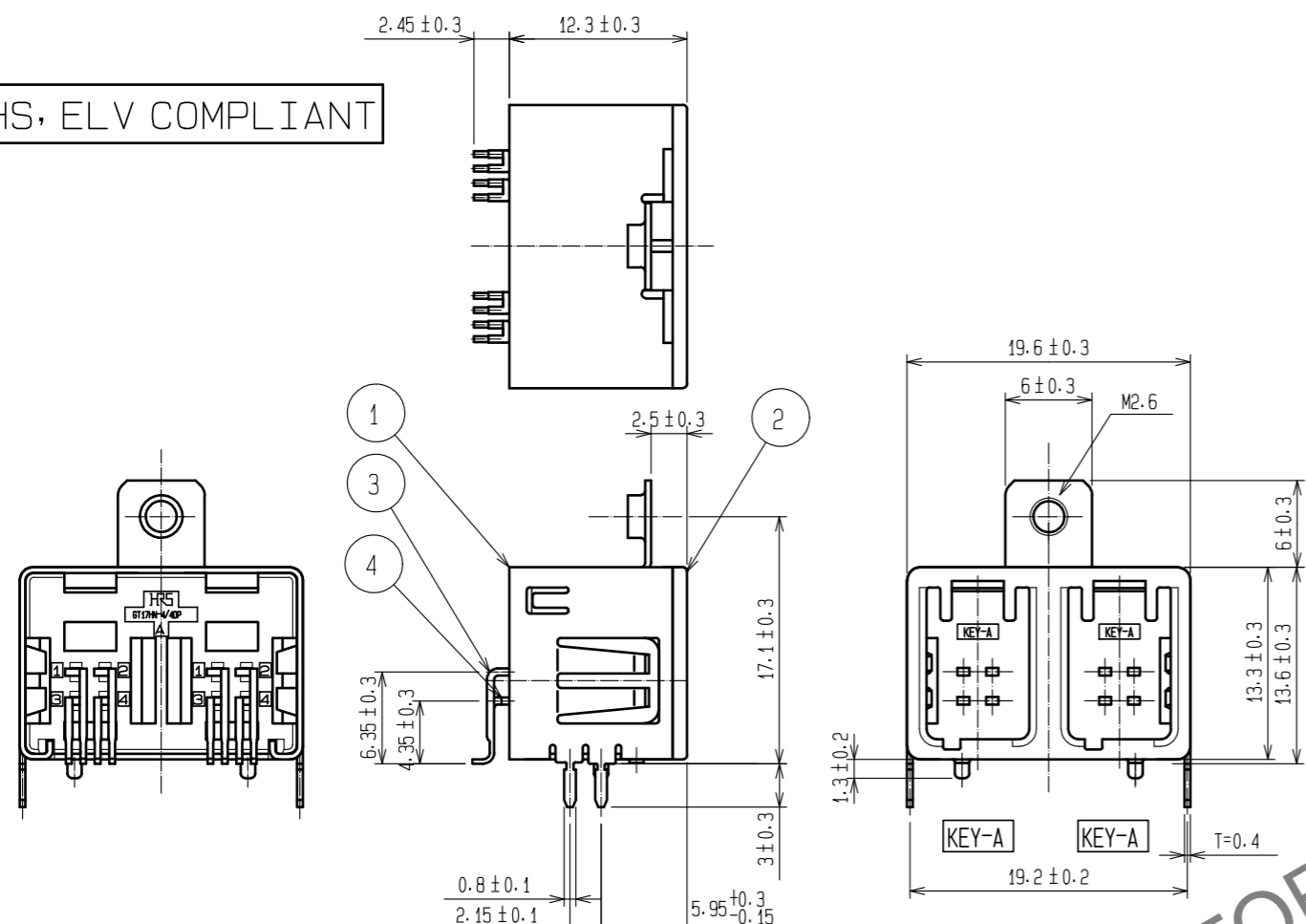
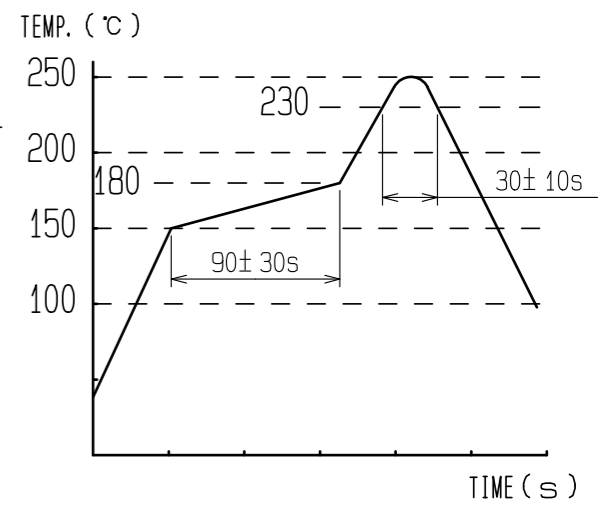


Aug.1.2024 Copyright 2024 HIROSE ELECTRIC CO., LTD. All Rights Reserved.
In case of consideration for using Automotive equipment / device which demand high reliability, kindly contact our sales window correspondents.

RoHS, ELV COMPLIANT

NOTES

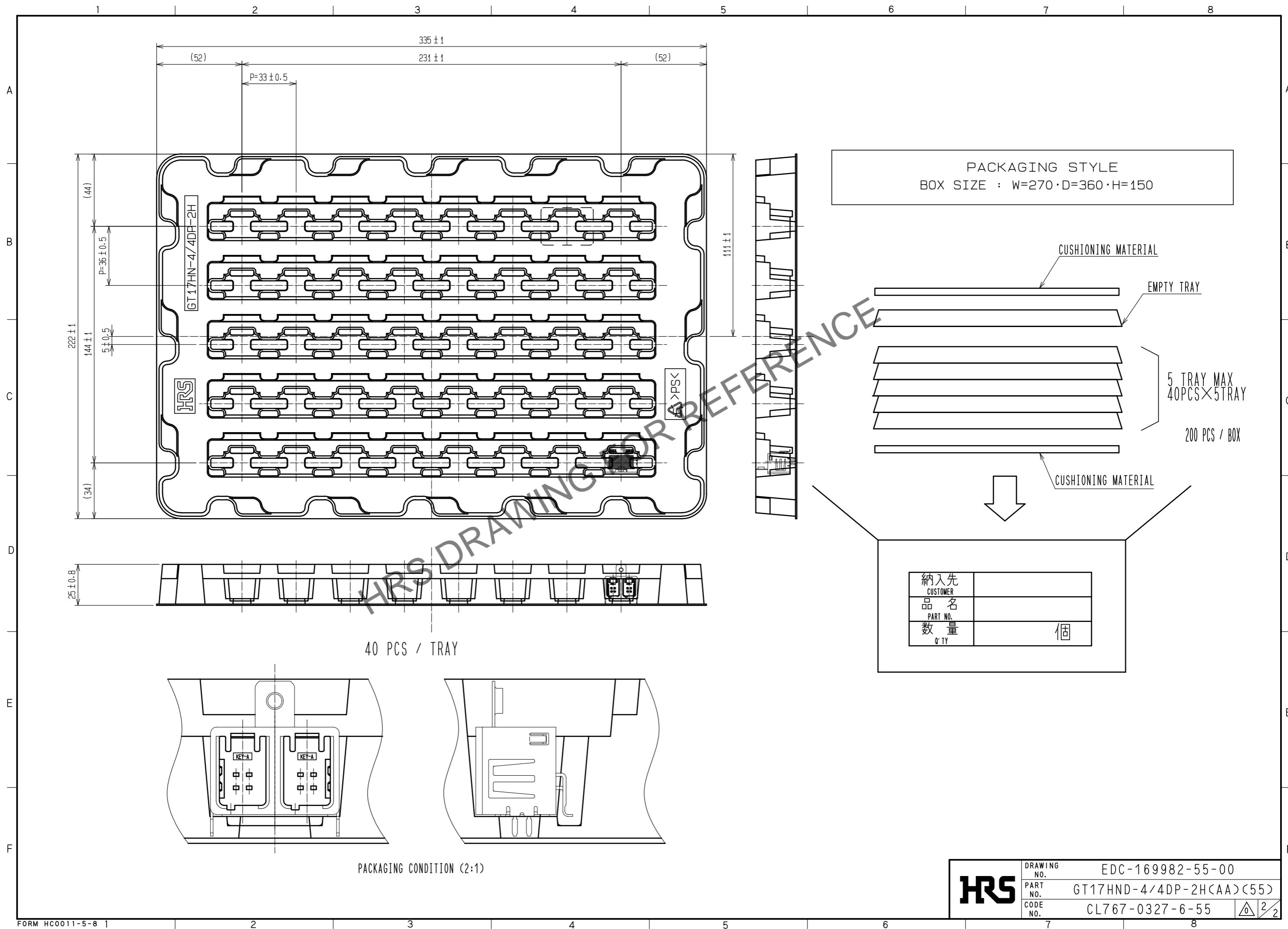
- 1) RECOMMENDED REFLOW PROFILE (SEE RIGHT GRAPH)
CYCLE TIME: UP TO 2 CYCLES OF REFLOW SOLDERING ARE POSSIBLE UNDER THE CONDITIONS, PROVIDED THAT THERE IS A RETURN TO NORMAL TEMPERATURE BETWEEN THE FIRST AND SECOND CYCLE.
PEAK TEMPERATURE: 250°C
230°C MIN. FOR 20 TO 40 SECONDS.
PREHEATING AREA 150 TO 180 °C FOR 60 TO 120 SECONDS.
- 2) HAND SOLDERING: 280-300°C, 2S MAX.
- 3) CONTACT COPLANARITY: 0.1mm MAX.
- 4) RECOMMENDED THICKNESS OF PCB: 1.6mm
- 5) RECOMMENDED THICKNESS OF SOLDERING PASTE: 0.12mm



2	PPS	BROWN	4	BRASS	TIN PLATING
1	COPPER ALLOY	TIN PLATING	3	BRASS	TIN PLATING
NO.	MATERIAL	FINISH . REMARKS	NO.	MATERIAL	FINISH . REMARKS
UNITS	mm	SCALE	2 : 1	COUNT	DESCRIPTION OF REVISIONS
APPROVED : KI. HIROKAWA		20200416		DESIGNED	EDC-169982-55-00
CHECKED : EJ. WAKATSUKI		20200415		CHECKED	
DESIGNED : TS. KUBOTA		20200325		DATE	
DRAWN : YK. MITSUISHI		20200324			
HIROSE ELECTRIC CO., LTD.			DRAWING NO. EDC-169982-55-00 PART NO. GT17HND-4/4DP-2H(AA)(55) CODE NO. CL767-0327-6-55		

HRS DRAWING FOR REFERENCE

Aug.1.2024 Copyright 2024 HIROSE ELECTRIC CO., LTD. All Rights Reserved.
 In case of consideration for using Automotive equipment / device which demand high reliability, kindly contact our sales window correspondents.



GT17HN-4/4DP-2H

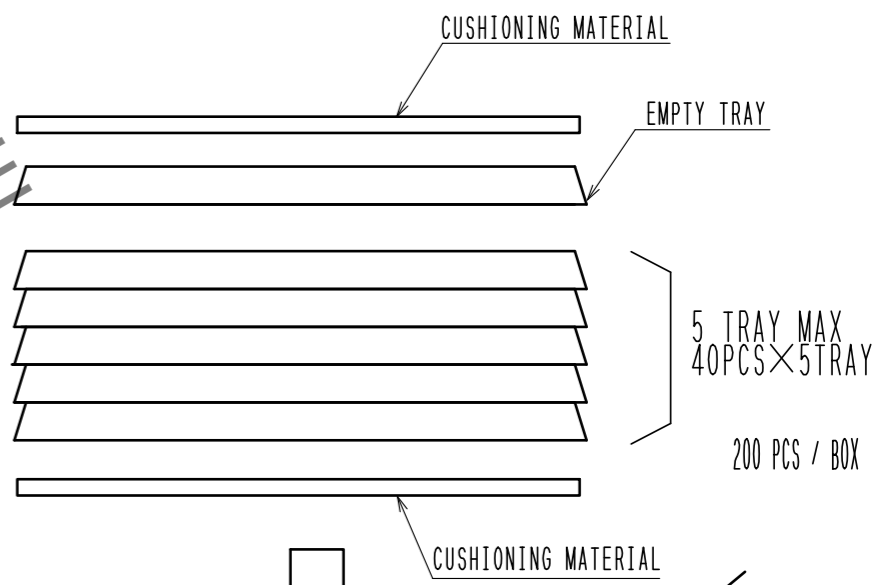
HRS

AA>PSK

40 PCS / TRAY

PACKAGING CONDITION (2:1)

PACKAGING STYLE
 BOX SIZE : W=270 · D=360 · H=150



納入先 CUSTOMER	
品名 PART NO.	
数量 Q'TY	個

HRS	DRAWING NO.	EDC-169982-55-00
	PART NO.	GT17HND-4/4DP-2H(AA)(55)
	CODE NO.	CL767-0327-6-55