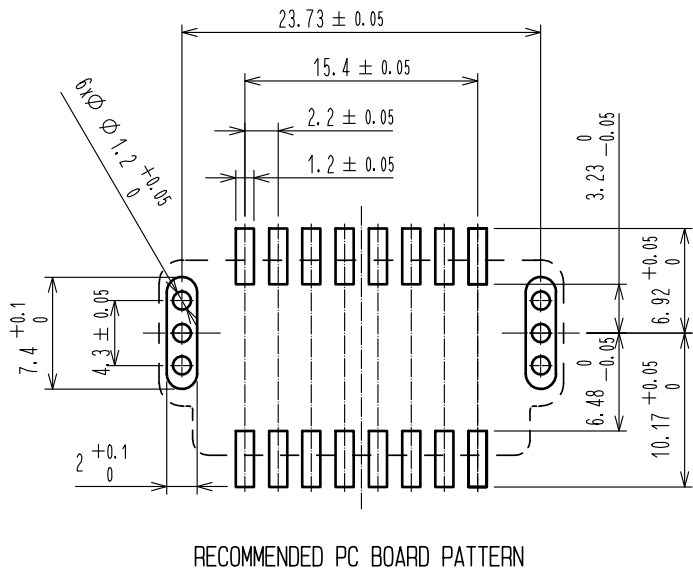
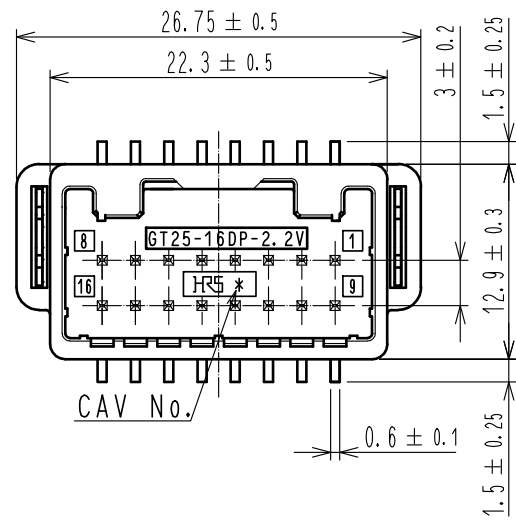
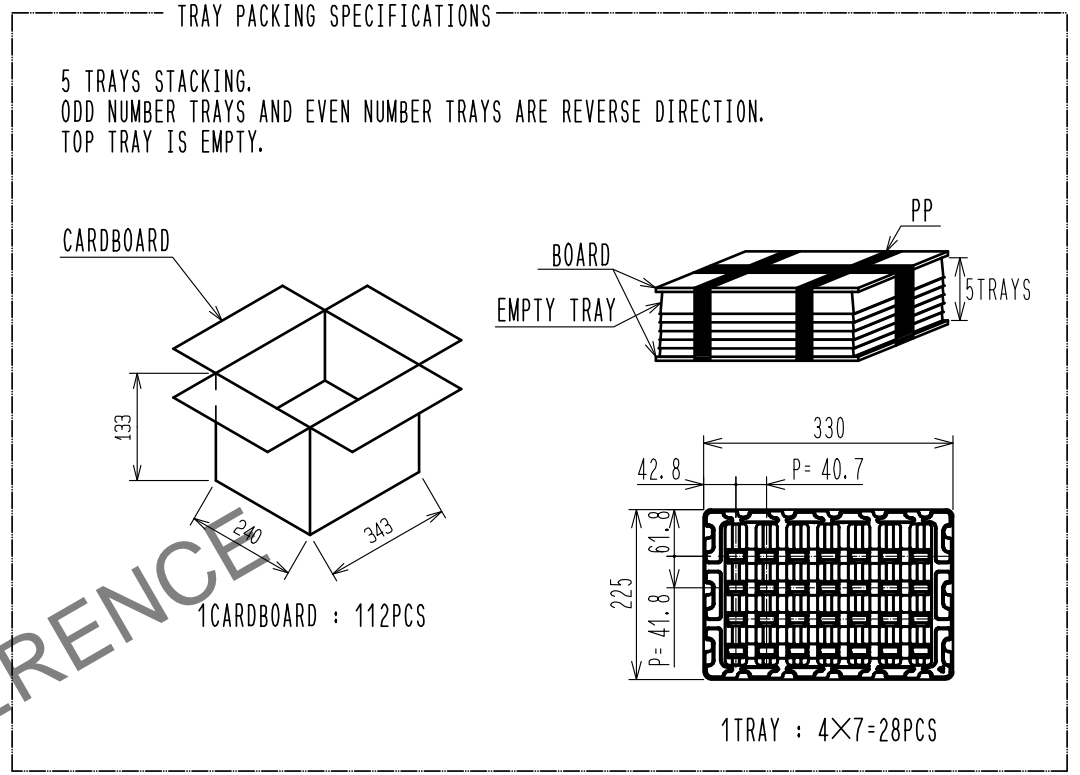


ELV, RoHS COMPLIANT

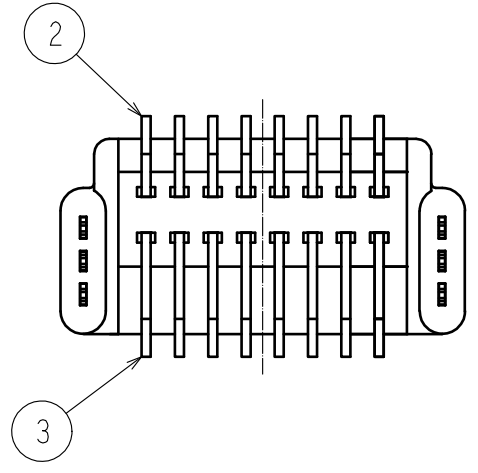
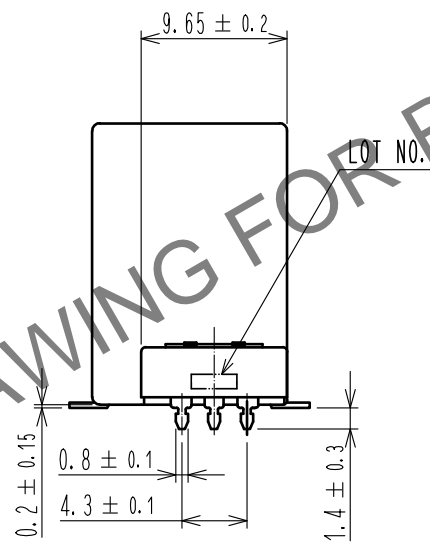
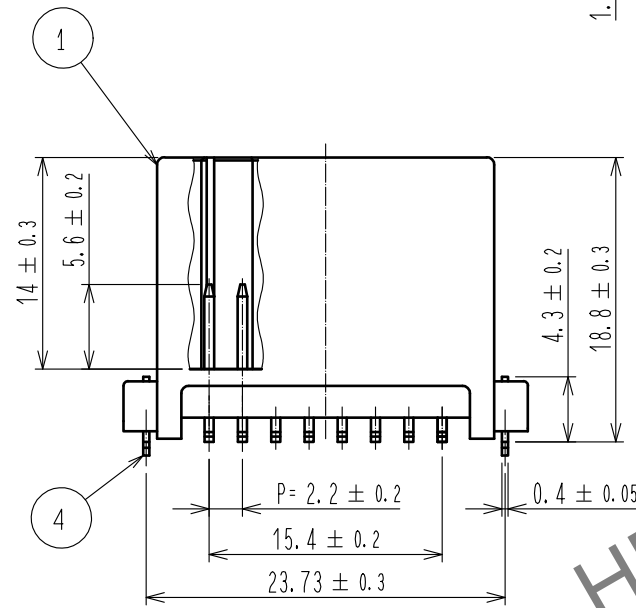


RECOMMENDED PC BOARD PATTERN



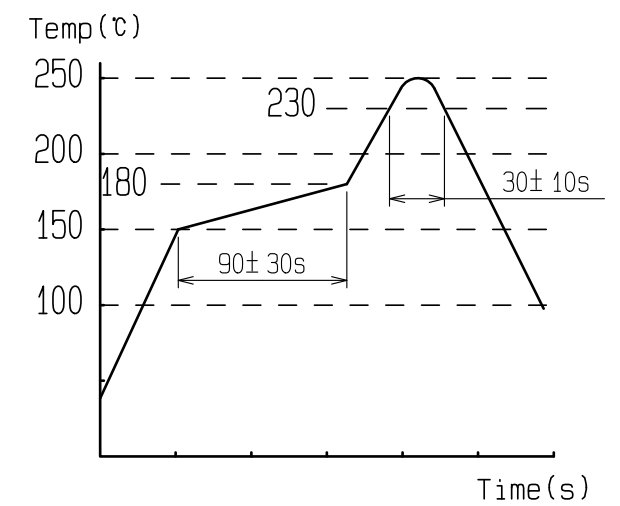
1 CARDBOARD : 112 PCS

1 TRAY : 4x7=28 PCS



HRS DRAWING FOR REFERENCE

- NOTE1. RECOMMENDED TEMPERATURE PROFILE FOR REFLOW (REFER TO RIGHT FIG.)
 USED REFLOW SYSTEM : IR IN THE AIR OR NITROGEN
 NO. OF CYCLES : 2 MAX
 PEAK : 250°C
 OVER 230°C : 20~40s
 PREHEAT : 150~180°C
 60~120s
 2. TEMPERATURE FOR SOLDERING IRON : 280~300°C WITHIN 2s
 3. CO-PLANARITY SHALL BE 0.1 MAX.
 4. PC BOARD THICKNESS=1.6.
 5. RECOMMENDED SOLDER THICKNESS=0.15



2	BRASS	TIN PLATING	T=0.64	4	BRASS	TIN PLATING	T=0.4	
1	PPS	LIGHT GRAY		3	BRASS	TIN PLATING	T=0.64	
NO.	MATERIAL	FINISH	REMARKS	NO.	MATERIAL	FINISH	REMARKS	
UNITS	mm	SCALE	2 : 1	COUNT	DESCRIPTION OF REVISIONS	DESIGNED	CHECKED	DATE
HIROSE ELECTRIC CO., LTD.		APPROVED	: HH. TSUKUMO	20200325	DRAWING NO.	EDC-166656-56-00		
		CHECKED	: HH. TSUKUMO	20200325	PART NO.	GT25-16DP-2.2V(56)		
		DESIGNED	: KS. UCHIYAMA	20200324	CODE NO.	CL775-0020-8-56		
		DRAWN	: YK. MITSUISHI	20200323				

Jun.1.2024 Copyright 2024 HIROSE ELECTRIC CO., LTD. All Rights Reserved. In case of consideration for using Automotive equipment / device which demand high reliability, kindly contact our sales window correspondents.