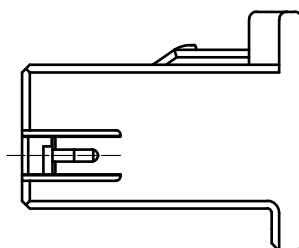
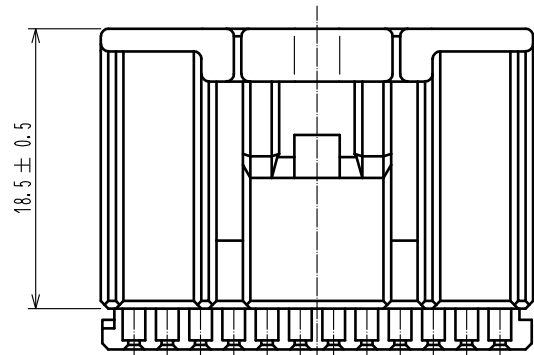
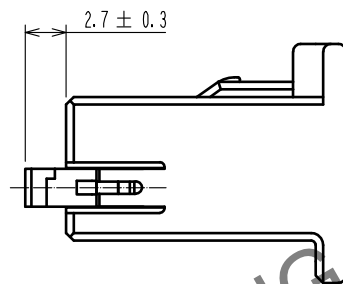
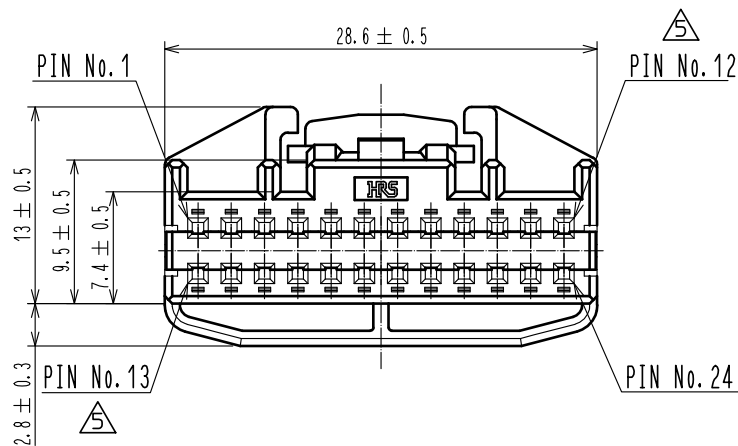


Jun.1.2024 Copyright 2024 HIROSE ELECTRIC CO., LTD. All Rights Reserved.  
In case of consideration for using Automotive equipment / device which demand high reliability, kindly contact our sales window correspondents.

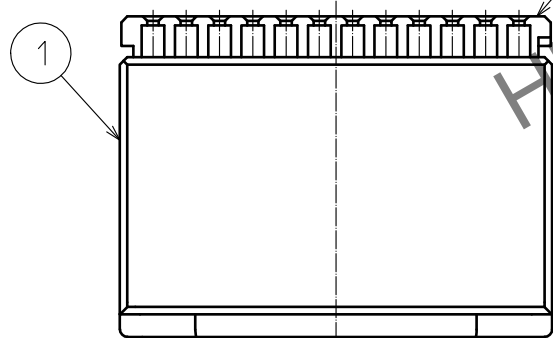
ELV·RoHS COMPLIANT



2 RETAINER COMPLETELY ASSEMBLED CONDITION

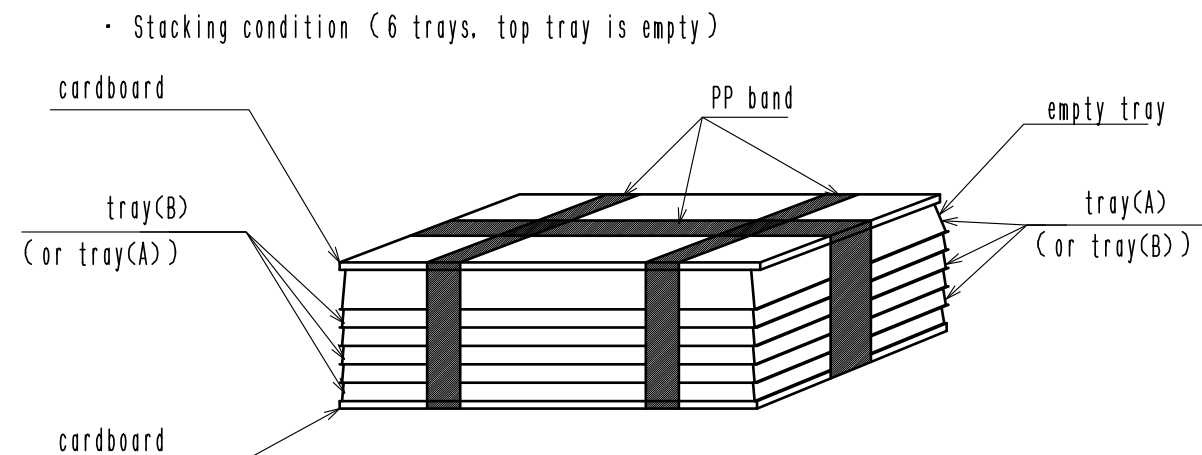


1 RETAINER TEMPORARILY ASSEMBLED CONDITION

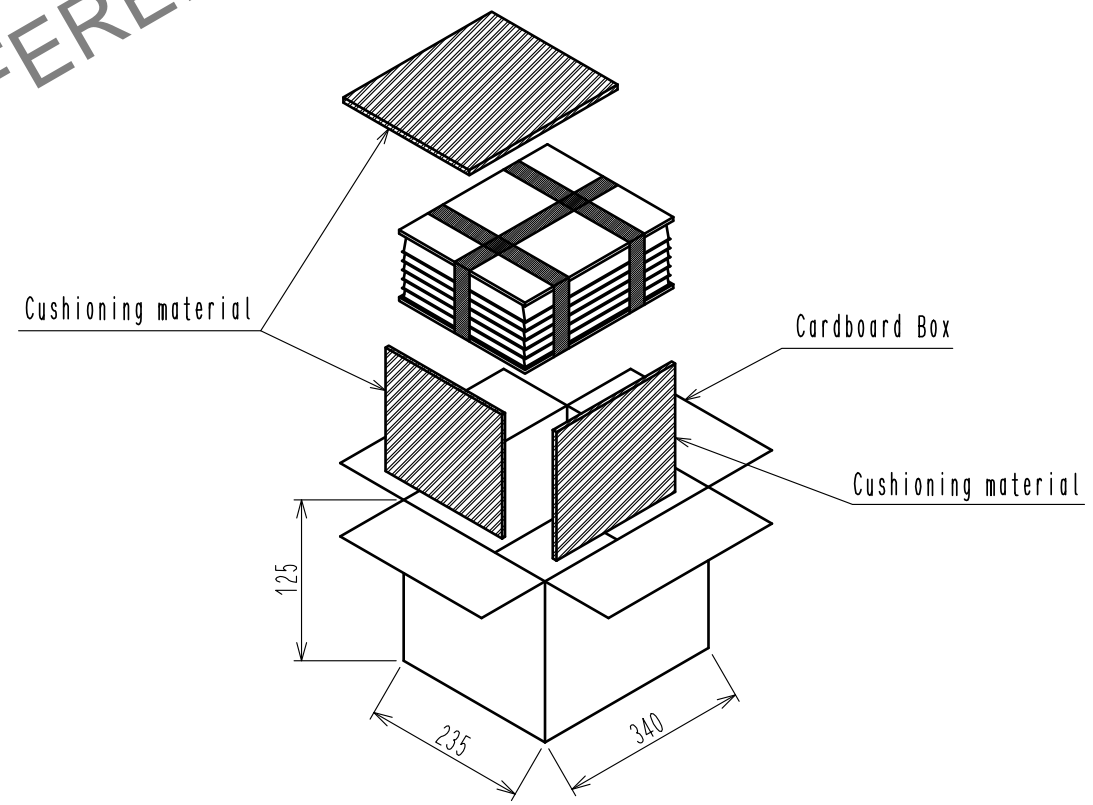


NOTE. 1 RETAINER IS TEMPORARILY ASSEMBLED INTO HOUSING.  
NOTE. 2 RETAINER TO BE COMPLETELY ASSEMBLED INTO POSITION AFTER CONTACT IS INSERTED.  
NOTE. 3 PACKAGE SPECIFICATION

3 PACKAGE SPECIFICATION



Cardboard box package condition. (60pcs/stack × 5 stacks = 300pcs)



|                                      |          |                                    |                            |  |                       |                        |                  |
|--------------------------------------|----------|------------------------------------|----------------------------|--|-----------------------|------------------------|------------------|
| 1                                    | PPE      | BLACK                              | 2                          | PBT  | DARK GRAY             |                        |                  |
| NO.                                  | MATERIAL | FINISH . REMARKS                   | NO.                        | MATERIAL                                   | FINISH . REMARKS      |                        |                  |
| UNITS<br>mm                          |          | SCALE<br>2 : 1                     | COUNT<br>2                 | DESCRIPTION OF REVISIONS<br>DIS-T-00008840 | DESIGNED<br>AN. SAIKI | CHECKED<br>HH. TSUKUMO | DATE<br>20210330 |
| <b>HRS</b> HIROSE ELECTRIC CO., LTD. |          | APPROVED : AR. SHIRAI 20120111     | DRAWING NO. EDC4-169088-00 |  |                       |                        |                  |
|                                      |          | CHECKED : NH. NAKATA 20120111      | PART NO. GT25-24DS-HU/R    |  |                       |                        |                  |
|                                      |          | DESIGNED : TK. SHISHIKURA 20120109 | CODE NO. CL0775-0046-1-00  |  |                       |                        |                  |
|                                      |          | DRAWN : TK. SHISHIKURA 20120109    |                            |  |                       |                        |                  |