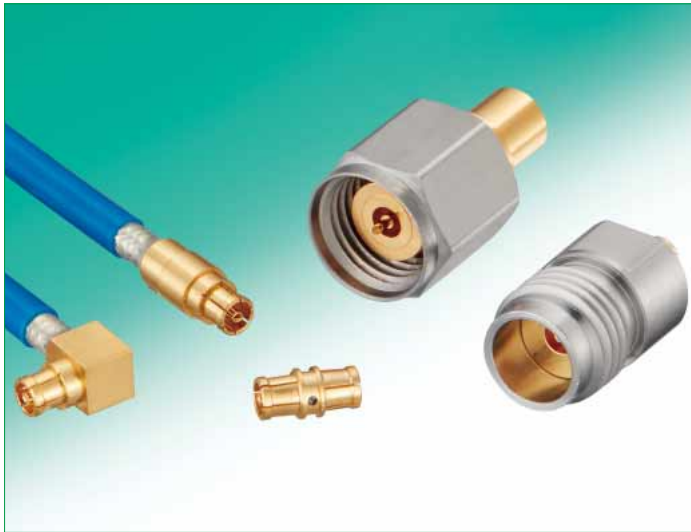


# Push-On Lock, SMPM Coaxial Connectors in MIL Standard

## SMPM Series

Compatible with 65GHz configurations



### ■ Features

#### 1. Features : Up to 65GHz

A speeding request of the transmission speed is rising by a rise of optical communication systems, superior performance of a transmission system and the data communication amount. The 65GHz high frequency connector by which a SMPM series is correspondence in a large-volume high-speed transmission system.

#### 2. Push-On which could excel the operability, lock system

#### 3. Compliant to SMPM in MIL Standard

### ■ Applications

Optical transmission devices, Measuring instruments, Communication equipment etc.

### ■ Product Specifications

Ratings	Nominal characteristic impedance	50Ω	Operating Temperature Range	-55°C to +125°C (95% RH or less)
	Rated frequency	DC to 65GHz	Storage Temperature Range	-55°C to +50°C (95% RH or less)

Items	Specifications	Conditions
1. Contact resistance	Center : Less than 16mΩ External : Less than 16mΩ	Measured at less than 100mA
2. Insulation resistance	500MΩ min.	Measured at 250V DC
3. Withstanding voltage	No flashover or breakdown	250V AC for 1 minute
4. Return loss	15dB min.	DC to 26.5GHz
	10dB min.	DC to 40GHz
	7dB min.	DC to 65GHz
5. Holding power of female contact	0.1N more	Measured with φ0.2896 pin gauge
6. Mating Cycles	Contact resistance at center : Less than 28mΩ External : Less than 28mΩ No broken, cracked, or loose parts	100 cycles
7. Moisture resistance of temperature/humidity cycle	Insulation resistance : More than 100MΩ (in a high humidity environment) Insulation resistance : More than 500MΩ (in a dry environment) No broken, cracked or loose parts	Left for 10 cycles (240 hours) in an environment with the temperature ranging from -10 to 65°C and the humidity ranging from 90 to 98%.
8. Temperature cycle	No broken, cracked or loose parts	Temperature : 5 cycles for a series of time periods : -65°C for 30 minutes → 3 minutes → +125°C for 30 minutes → 3 minutes
9. Salt spray	No considerable corrosion	Continuous 48 hour cycle in 5% salt water solution

### ■ Materials / Finish

Part	Materials	Finish
Shell	Beryllium copper	Gold plated
Contact	Male contact	Phosphor bronze
	Female contact	Beryllium copper
Insulator	PTFE (resin)	————

In cases where the application will demand a high level of reliability, such as automotive, please contact a company representative for further information.

## Product Number Structure

Refer to the chart below when determining the product specifications from the product number.  
Please select from the product numbers listed in this catalog when placing orders.

**SMPM** - [ 1 ] [ 2 ] [ 3 ]

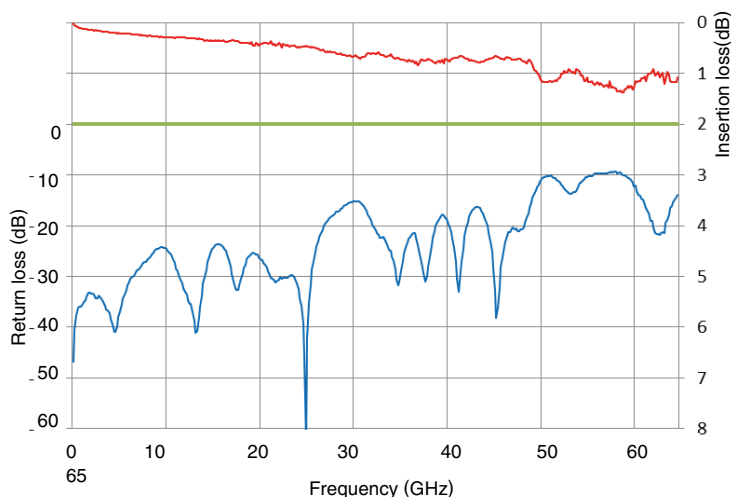
1	Series name : SMPM
2	Connector type J : Straight jack LJ : Right angle jack A-JJ : Relay adapter
3	Applicable cable SF047 : 0.047-inch, semi-flexible cable SF085 : 0.085-inch, semi-flexible cable 532 : 5.32mm 1270 : 12.70mm

## High-frequency characteristic

SMPM-A-JJ-532 Figure of measurement



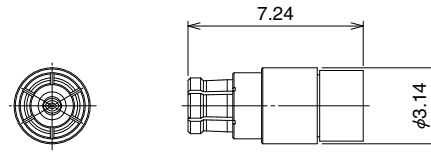
SMPM-A-JJ-532 RF Characteristic data



Mar.1.2021 Copyright 2021 HIROSE ELECTRIC CO., LTD. All Rights Reserved.

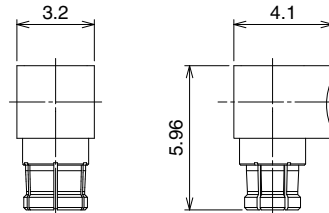
## ■ Straight jack

SMPM-J-SF\*\*\*



## ■ Right angle jack

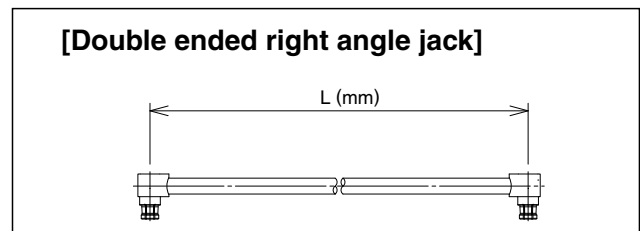
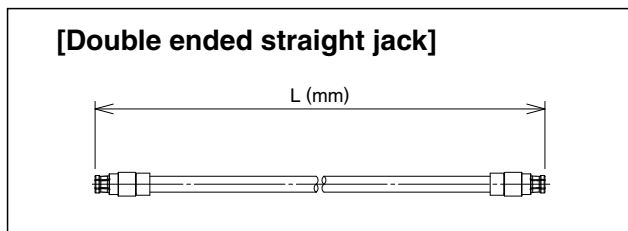
SMPM-LJ-SF\*\*\*



[Please place cable assembly orders per the specifications below]

## ■ Cable assembly specifications

Please specify the dimensions of 2.92mm Series cable assembly as follows : For the cable length, Please contact HRS representative.



## ● Composition of the cable harness specification product number structure

Refer to the chart below when determining the product specifications from the product number.

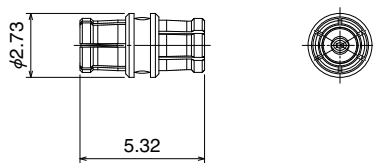
Please select from the product numbers listed in this catalog when placing orders.

**SMPM - [ ] - SF085N 1 - A - L RS**

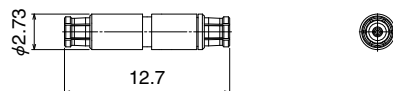
①                      ②                      ③                      ④                      ⑤

① Series name : SMPM
② Harness type 2J : Double ended straight jack 2LJ : Double ended right angle jack JLJ : Single ended straight jack, Single ended right angle jack
③ Cable type SF047N : 0.047-inch, semi-flexible cable SF085N : 0.085-inch, semi-flexible cable
④ Cable color None : No jacket 1 : Blue
⑤ Overall length L (mm) : Length L is expressed by the unit of mm.

## ■ Relay adapter (Jack to Jack)



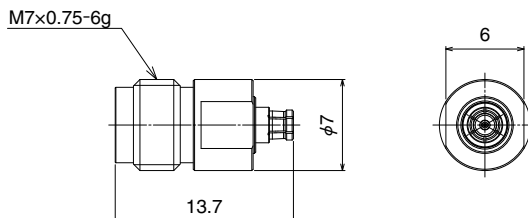
Part No.	HRS No.	RoHS
SMPM-A-JJ-532	338-0500-0	○



Part No.	HRS No.	RoHS
SMPM-A-JJ-1270	338-0503-9	○

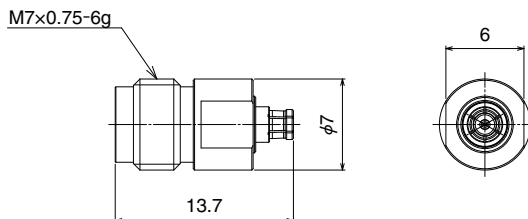
## ■ Conversion adapter

### ● HV conversion adapter (SMPM jack to HV jack)



Part No.	HRS No.	RoHS
SMPMJ-HVJ	311-0421-7	○

### ● HV conversion adapter (SMPM plug to HV plug)



Part No.	HRS No.	RoHS
SMPMP(FD)-HVP	311-0419-5	○
SMPMP(SB)-HVP	311-0420-4	

## ■ Non-reflective terminator

### ● Materials / Finish

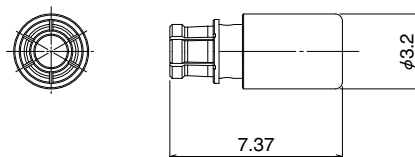
Part	Materials	Finish
Shell	Beryllium copper	Gold plated
Insulator	PTFE resin	————
Female contact	Beryllium copper	Gold plated
Resistive element	Metal film	————

### ● Product Number Structure

**SMPM - TM - J**

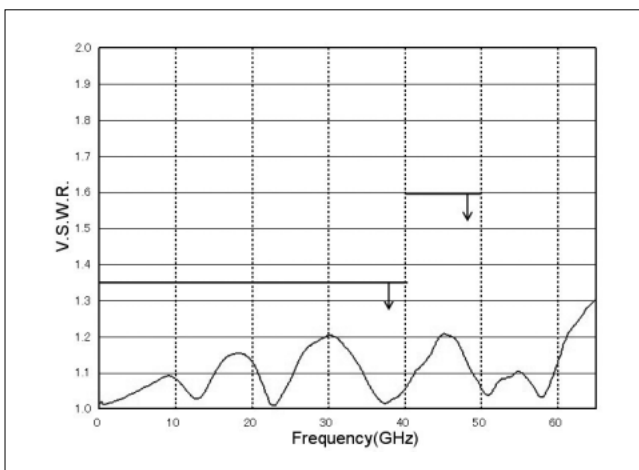
①                      ②                      ③

① Series name : SMPM
② TM : Non-reflective terminator
③ Connector type J : Jack type



Part No.	HRS No.	Rated frequency	Voltage standing wave ratio (V.S.W.R.) (Max)		Power (W)	Connector type	Weight (g)	RoHS
			DC to 40GHz	40 to 50GHz				
SMPM-TMJ	353-0163-5	DC to 50GHz	1.35	1.60	1.35	Jack		○

### ◆ Frequency characteristics (TYPICAL)



**USA:**

**HIROSE ELECTRIC (U.S.A.), INC. HEADQUARTERS CHICAGO OFFICE**  
2300 Warrenville Road, Suite 150,  
Downers Grove, IL 60515  
Phone : +1-630-282-6700  
<http://www.hirose.com/us/>

**USA:**

**HIROSE ELECTRIC (U.S.A.), INC. SAN JOSE OFFICE**  
2841 Junction Ave, Suite 200  
San Jose, CA. 95134  
Phone : +1-408-253-9640  
Fax : +1-408-253-9641  
<http://www.hirose.com/us/>

**USA:**

**HIROSE ELECTRIC (U.S.A.), INC. DETROIT OFFICE (AUTOMOTIVE)**  
17197 N. Laurel Park Drive, Suite 253,  
Livonia, MI 48152  
Phone : +1-734-542-9963  
Fax : +1-734-542-9964  
<http://www.hirose.com/us/>

**USA:**

**HIROSE ELECTRIC (U.S.A.), INC. BOSTON OFFICE**  
300 Brickstone Square Suite 201,  
Andover, MA 01810  
Phone : +1-978-662-5255

**THE NETHERLANDS:**

**HIROSE ELECTRIC EUROPE B.V.**  
Hogehillweg #8 1101 CC Amsterdam Z-0  
Phone : +31-20-6557460  
Fax : +31-20-6557469  
<http://www.hirose.com/eu/>

**GERMANY:**

**HIROSE ELECTRIC EUROPE B.V. GERMAN BRANCH**  
Schoenbergstr. 20, 73760 ostfildern  
Phone : +49-711-456002-1  
Fax : +49-711-456002-299  
<http://www.hirose.com/eu/>

**GERMANY:**

**HIROSE ELECTRIC EUROPE B.V. NUREMBERG OFFICE**  
Neumeyerstrasse 22-26, 90411 Nurnberg  
Phone : +49-911 32 68 89 63  
Fax : +49-911 32 68 89 69  
<http://www.hirose.com/eu/>

**GERMANY:**

**HIROSE ELECTRIC EUROPE B.V. HANOVER OFFICE**  
Bayernstr. 3, Haus C 30855 Langenhagen, Germany  
Phone : +49-511 97 82 61 30  
Fax : +49-511 97 82 61 35  
<http://www.hirose.com/eu/>

**FRANCE:**

**HIROSE ELECTRIC EUROPE B.V. PARIS OFFICE**  
Regus La Garenne Colombes, Place de La Belgique,  
71 Boulevard National La Garenne Colombes, 92250, France  
Phone : +33 (0) 1 7082 3170  
Fax : +33 (1) 7082 3101  
<http://www.hirose.com/eu/>

**UNITED KINGDOM:**

**HIROSE ELECTRIC EUROPE BV (UK BRANCH)**  
4 Newton Court, Kelvin Drive, Knowlhill,  
Milton Keynes, MK5 8NH  
Phone : +44-1908 202050  
Fax : +44-1908 202058  
<http://www.hirose.com/eu/>

**CHINA:**

**HIROSE ELECTRIC (SHANGHAI) CO., LTD.**  
18, Enterprise Center Tower 2, 209# Gong He  
Road, Jing'an District, Shanghai, CHINA 200070  
Phone : +86-21-6391-3355  
Fax : +86-21-6391-3335  
<http://www.hirose.com/cn/>

**CHINA:**

**HIROSE ELECTRIC (SHANGHAI) CO., LTD. BEIJING BRANCH**  
A1001, Ocean International Center, Building 56# East 4th  
Ring Middle Road, ChaoYang District, Beijing, 100025  
Phone : +86-10-5165-9332  
Fax : +86-10-5908-1381  
<http://www.hirose.com/cn/>

**CHINA:**

**HIROSE ELECTRIC TECHNOLOGIES (SHENZHEN) CO., LTD.**  
Room 09-13, 19/F, Office Tower Shun Hing Square, Di Wang Commercial Centre,  
5002 Shen Nan Dong Road, Shenzhen City, Guangdong Province, 518008  
Phone : +86-755-8207-0851  
Fax : +86-755-8207-0873  
<http://www.hirose.com/cn/>

**HONG KONG:**

**HIROSE ELECTRIC HONGKONG TRADING CO., LTD.**  
Room 1001, West Wing, Tsim Sha Tsui Centre, 66  
Mody Road, Tsim Sha Tsui East, Kowloon, Hong Kong  
Phone : +852-2803-5338  
Fax : +852-2591-6560  
<http://www.hirose.com/hk/>

**TAIWAN:**

**HIROSE ELECTRIC TAIWAN CO., LTD.**  
103 8F, No.87, Zhengzhou Rd., Taipei  
Phone : +886-2-2555-7377  
Fax : +886-2-2555-7350  
<http://www.hirose.com/tw/>

**KOREA:**

**HIROSE KOREA CO., LTD.**  
250, Huimganggongwon-ro, Siheung-si,  
Gyeonggi-do, Korea, 15083  
Phone : +82-31-496-7000 or 7124  
Fax : +82-31-496-7100  
<http://www.hirose.co.kr/>

**SINGAPORE:**

**HIROSE ELECTRIC SINGAPORE PTE. LTD.**  
10 Anson Road #26-16, International Plaza  
079903, Singapore  
Phone : +65-6324-6113  
Fax : +65-6324-6123  
<http://www.hirose.com/sg/>

**INDIA:**

**HIROSE ELECTRIC SINGAPORE PTE. LTD. DELHI LIAISON OFFICE**  
Office NO.552, Regus-Green Boulevard, Level5, Tower C,  
Sec62, Plot B-9A, Block B, Noida, 201301, Uttar Pradesh, India  
Phone : +91-12-660-8018  
Fax : +91-120-4804949  
<http://www.hirose.com/sg/>

**INDIA:**

**HIROSE ELECTRIC SINGAPORE PTE. LTD. BANGALORE LIAISON OFFICE**  
Unit No-403, 4th Floor, No-84, Barton Centre, Mahatma  
Gandhi (MG) Road, Bangalore 560 001, Karnataka, India  
Phone : +91-80-4120 1907  
Fax : +91-80-4120 9908  
<http://www.hirose.com/sg/>

**MALAYSIA:**

**PENANG REPRESENTATIVE OFFICE**  
1-21-01, Suntech @ Penang Cybercity (1164), Lintang  
Mayang Pasir 3, 11950, Bayan Baru, Penang, Malaysia.  
Phone : +604-619-2564  
Fax : +604-619-2574  
<http://www.hirose.com/sg/>

**THAILAND:**

**BANGKOK OFFICE (REPRESENTATIVE OFFICE)**  
Unit 4703, 47th FL., 1 Empire Tower, South Sathorn  
Road, Yannawa, Sathorn, Bangkok 10120 Thailand  
Phone : +66-2-686-1255  
Fax : +66-2-686-3433  
<http://www.hirose.com/sg/>

**HIROSE ELECTRIC CO., LTD.**

2-6-3, Nakagawa Chuoh, Tsuzuki-Ku, Yokohama-Shi 224-8540, JAPAN  
TEL: +81-45-620-3526 Fax: +81-45-591-3726  
<http://www.hirose.com>  
<http://www.hirose-connectors.com>