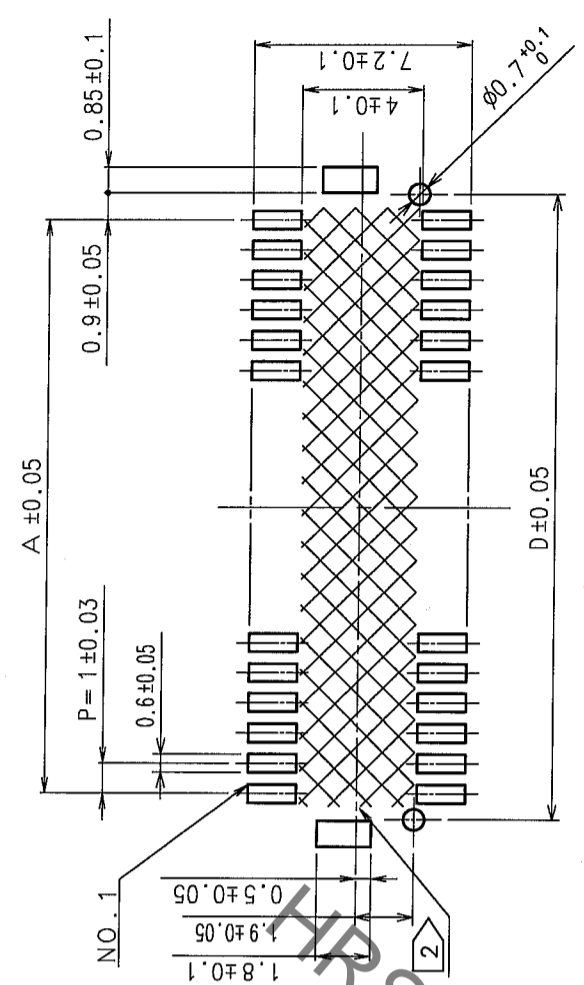


| COUNT | DESCRIPTION OF REVISIONS | BY | CHKD | DATE | COUNT | DESCRIPTION OF REVISIONS | BY | CHKD | DATE |
|-------|--------------------------|----|------|------|-------|--------------------------|----|------|------|
| | | | | | | | | | |
| | | | | | | | | | |
| | | | | | | | | | |

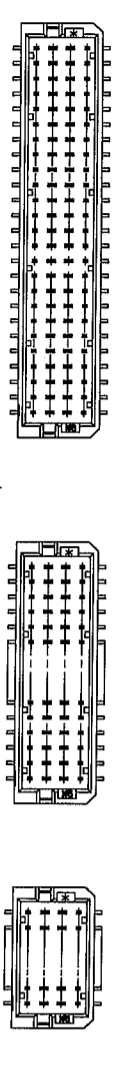
RECOMMENDED PATTERN(FREE)



| PART NO. | HRS NO. | NUMBER OF CONTACTS | A | B | C | D |
|-------------------|-----------------|--------------------|------|------|------|------|
| DF20G-10DP-1V(56) | CL686-0037-6-56 | 10 | 4.0 | 7.3 | 6.6 | 5.7 |
| DF20G-20DP-1V(56) | CL686-0038-9-56 | 20 | 9.0 | 12.3 | 11.6 | 10.7 |
| DF20G-30DP-1V(56) | CL686-0039-1-56 | 30 | 14.0 | 17.3 | 16.6 | 15.7 |
| DF20G-40DP-1V(56) | CL686-0040-0-56 | 40 | 19.0 | 22.3 | 21.6 | 20.7 |
| DF20G-50DP-1V(56) | CL686-0041-3-56 | 50 | 24.0 | 27.3 | 26.6 | 25.7 |

NOTES: 1 LEAD CO-PLANARITY SHALL BE 0.1mm MAX INCLUDING METAL HOLD DOWN.
 2 IF THERE IS PATTERN ON PART, THERE IS A POSSIBILITY THAT IT WILL MAKE CONTACT WITH THE LEADS.
 3 THE NUMBER AND POSITION OF A RIB ARE AS FOLLOWS BY THE NUMBER OF CONTACTS.

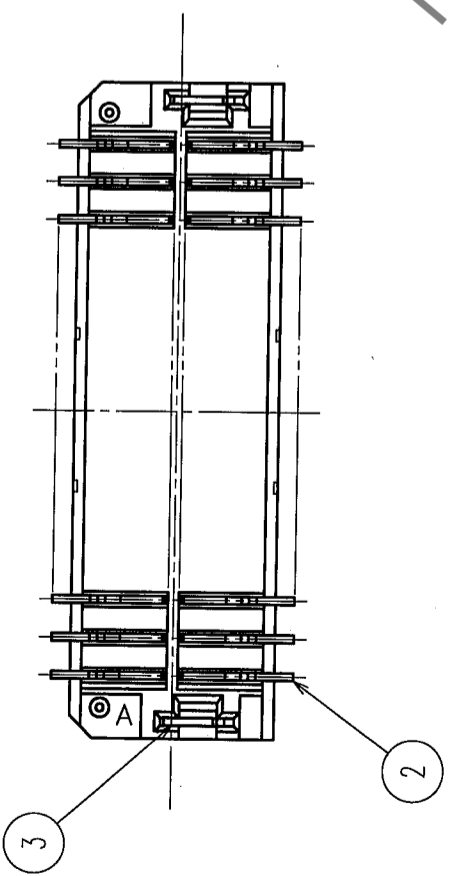
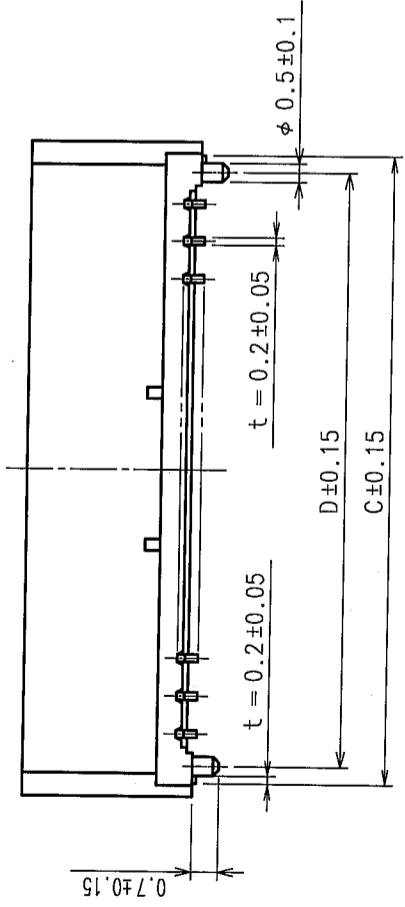
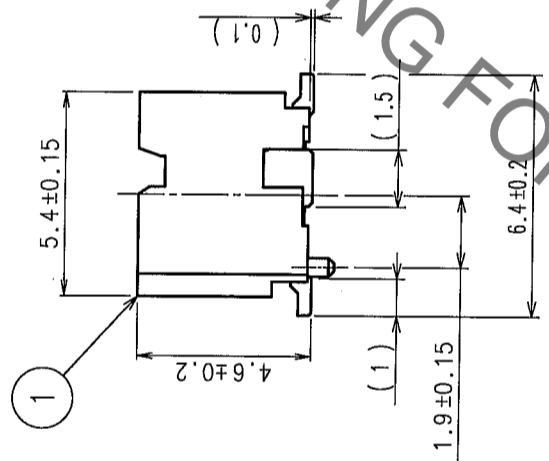
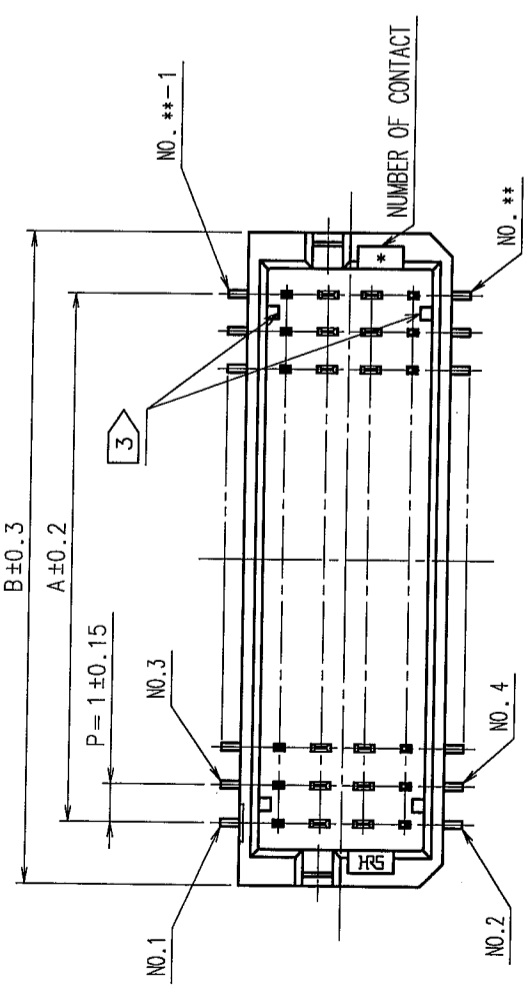
10, 20DP 30, 40DP 50DP



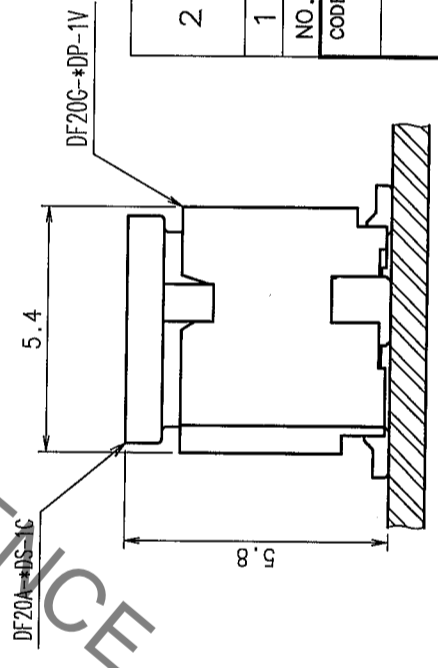
| NO. | MATERIAL | FINISH, REMARKS | NO. | MATERIAL | FINISH, REMARKS |
|-----|-----------------|---|-----|-----------|--|
| 2 | PHOSPHOR BRONZE | CONTACT AREA: GOLD PLATED 0.2μm min. LEAD AREA: GOLD PLATED FLASH 0.03μm min. UNDER PLATING: NICKEL PLATED 2μm min. | 6 | POLYAMIDE | NATURAL (BEIGE), UL94V-0 |
| 1 | POLYAMIDE | NATURAL (BEIGE), UL94V-0 | 5 | POLYESTER | CLEAR (COVER TAPE) |
| | | | 4 | PS | CLEAR (EMBOSSED CARRIER TAPE) |
| | | | 3 | BRASS | SURFACE PLATING: TIN-COPPER PLATED 1μm min. UNDER PLATING: NICKEL PLATED 1μm min. |

| CODE NO. (OLD) | CL | DRAWN | DESIGNED | CHECKED | APPROVED | RELEASED |
|----------------|----|----------|--------------|------------|----------|----------|
| | | A. MIURA | T. Yamaguchi | H. Imahara | J. Owa | |
| | | 05.08.08 | 05.08.11 | 05.08.11 | 05.08.12 | |

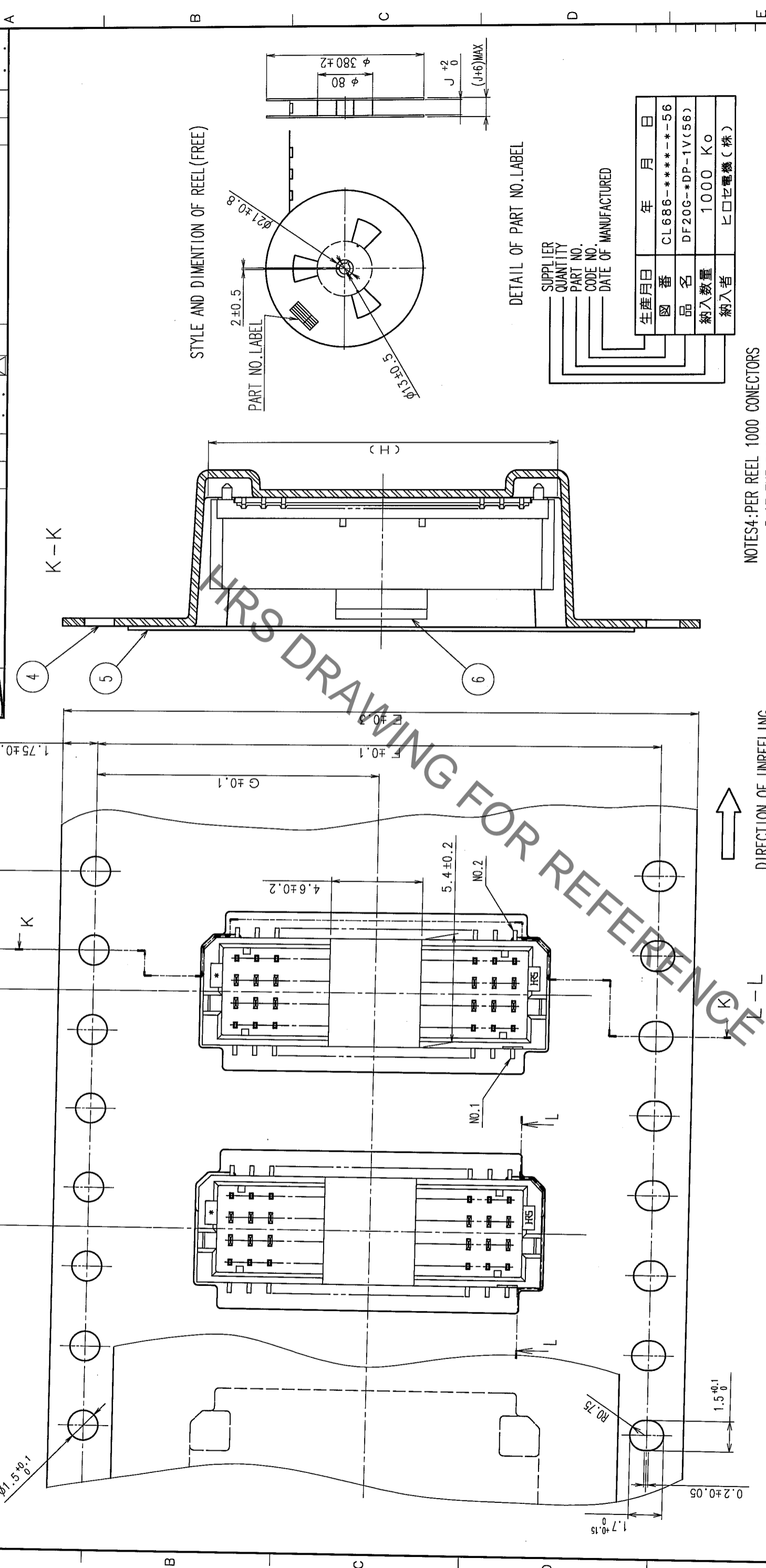
| DRAWING NO. | PART NO. |
|----------------|------------------|
| EDC3-164847-02 | DF20G-*DP-1V(56) |
| SCALE | CODE NO. |
| 5 : 1 | CL686- |
| UNITS | mm |
| | |



APPLICATION DIAGRAM(FREE)



| NO. | DESCRIPTION OF REVISIONS | BY | CHKD | DATE | COUNT | DESCRIPTION OF REVISIONS | BY | CHKD | DATE |
|-----|--------------------------|----|------|------|-------|--------------------------|----|------|------|
| 1 | | | | | | | | | |
| 2 | | | | | | | | | |
| 3 | | | | | | | | | |
| 4 | | | | | | | | | |
| 5 | | | | | | | | | |
| 6 | | | | | | | | | |



| PART NO. | NUMBER OF CONTACTS | E | F | G | H | J |
|-----------------|--------------------|----|------|------|------|------|
| CL686-0037-6-56 | 10 | 16 | - | 7.5 | 7.6 | 16.4 |
| CL686-0038-9-56 | 20 | 24 | - | 11.5 | 12.6 | 24.4 |
| CL686-0039-1-56 | 30 | 32 | 28.4 | 14.2 | 17.6 | 32.4 |
| CL686-0040-0-56 | 40 | 44 | 40.4 | 20.2 | 22.6 | 44.4 |
| CL686-0041-3-56 | 50 | 44 | 40.4 | 20.2 | 27.6 | 44.4 |

| | |
|----|--|
| TO | |
| | |
| | |

NOTES: PER REEL 1000 CONNECTORS
 5: AT THE BEGINNING OF THE REEL, 30 COMPONENTS SHALL BE EMPTY.
 AT THE END OF REEL, 20 COMPONENTS SHALL BE EMPTY.
 WHEN THE TAPE WIDTH IS 16 OR 24mm, SPROCKET HOLES SHALL BE SET ON THE UPPER SIDE OF REEL AS SHOWN ON THIS DRAWING.

| | | | |
|------|------------------|----|---|
| 生産月日 | 年 | 月 | 日 |
| 図番 | CL686-***-**-56 | | |
| 品名 | DF20G-*DP-1V(56) | | |
| 納入数量 | 1000 | Ko | |
| 納入者 | ヒロセ電機(株) | | |

| | |
|----------------|-------|
| CODE NO. (OLD) | CL |
| SCALE | 5 : 1 |
| UNITS | mm |

| | | | |
|-------------|----------------|----------|------------------|
| DRAWING NO. | EDC3-164847-02 | PART NO. | DF20G-*DP-1V(56) |
| DRAWN | A. MIURA | DESIGNED | T. Numagami |
| DATE | 05.08.08 | CHECKED | H. Umeda |
| | | APPROVED | J. Oka |
| | | RELEASED | |
| | | | 05.08.11 |
| | | | 05.08.12 |